

FORESTRY COMMISSION

Forty-First  
Annual Report of the  
Forestry Commissioners  
*for the year ended*  
30th September 1960

*Presented pursuant to Section 7 (3) of the Forestry  
Act, 1945 (8 & 9 Geo. VI Ch. 35)*

---

*Ordered by The House of Commons to be printed  
22nd February 1961*

---

LONDON

HER MAJESTY'S STATIONERY OFFICE

FIVE SHILLINGS NET



## THE FORESTRY COMMISSIONERS

at 30th September, 1960

The Earl of Radnor, K.G., K.C.V.O., *Chairman*.

Major D. C. Bowser, O.B.E., J.P.

Lt.-Col. Sir Richard Cotterell, Bt., J.P.

Mr. E. Gwynfryn Davies, J.P.

Mr. A. P. F. Hamilton, C.I.E., O.B.E., M.C.

Mr. Edward Bryan Latham, M.M.

Mr. Lloyd O. Owen, J.P.

Sir John Stirling of Fairburn, K.T., M.B.E.

Major F. W. Strang Steel.

Mr. Robert Taylor, J.P.

---

Director-General: Sir Arthur Gosling, K.B.E., C.B., F.R.S.E.

Deputy Director-General: Mr. James Macdonald, C.B.E., F.R.S.E.\*

Secretary: Mr. H. A. Turner.

Director of Forestry for England: Mr. G. B. Ryle, C.B.E.

Director of Forestry for Scotland: Mr. A. Watt.

Director of Forestry for Wales: Mr. J. R. Thom.

Director (Headquarters): Mr. J. Q. Williamson, M.B.E.†

---

\* Acting in the absence of Sir Henry Beresford-Peirse, seconded to the Forestry Division of the Food and Agriculture Organisation of the United Nations, Rome.

† Acting.

# CONTENTS

	<i>Page</i>
NAMES OF COMMISSIONERS AND SENIOR STAFF ... ..	2
GENERAL REVIEW ... ..	5
THE YEAR'S WORK ... ..	8
Private Forestry ... ..	8
Forestry Commission Operations ... ..	8
Finance ... ..	8
Staff ... ..	8
Acquisition of Land ... ..	9
Planting ... ..	9
Production and Disposal of Forest Produce ... ..	9
Research ... ..	10
Education ... ..	11
Conferences ... ..	12
Publications ... ..	12
Forest Parks ... ..	13
COMMITTEES ... ..	14
National Committees ... ..	14
Regional Advisory Committees ... ..	14
Home-Grown Timber Advisory Committee ... ..	16
Advisory Committee on the Utilisation of Home Grown Timber ... ..	17
Mechanical Development Committee ... ..	18
Advisory Committee on Forest Research ... ..	18
APPENDIX I. FINANCIAL AND STATISTICAL TABLES ... ..	19
<i>Table</i>	
1. Forestry Fund Summary ... ..	19
2. Account of Forestry Operations ... ..	20
3. Nurseries Account ... ..	20
4. Services other than Forestry Operations ... ..	22
5. Balance Sheet ... ..	24
6. Land Use ... ..	26
7. Land Managed by the Agricultural Departments ... ..	26
8. Forest Land Acquired, in Year ... ..	26
9. Summary Statement of Land Acquired, to end of year ... ..	27
10. Stocks of Nursery Plants ... ..	27
11. Nursery Plants Sold to Trade ... ..	27
12. Seed Imports ... ..	28
13. Planting in the Year ... ..	29
14. Progress of Planting in Last Ten Years ... ..	29
15. Species Planted in the Year ... ..	30
16. Fires ... ..	31
17. Causes of Fires ... ..	31
18. Areas and Volumes Thinned and Felled ... ..	32

	<i>Page</i>
19. Sales of Timber ... ..	32
20. Roads ... ..	33
21. Properties Managed ... ..	33
22. New Houses ... ..	33
23. Dedication Scheme ... ..	34
24. Approved Woodlands Scheme ... ..	34
25. Area Planted by Private Owners ... ..	35
26. Volume Licensed for Felling and Thinning ... ..	35
27. Area Licensed for Clear Felling ... ..	35
28. Land Use and Planting by Forests—England ... ..	36
29. Land Use and Planting by Forests—Scotland ... ..	41
30. Land Use and Planting by Forests—Wales ... ..	46
31. England: Main Statistics ... ..	48
32. Scotland: Main Statistics ... ..	50
33. Wales: Main Statistics ... ..	52
<b>APPENDIX II. MAPS</b> ... ..	53
England ... ..	54
Scotland ... ..	60
Wales ... ..	64
<b>ADDRESSES OF THE MAIN OFFICES OF THE FORESTRY COMMISSION</b> ...	66
<b>PLATES</b> ... <i>Central Inset</i>	

#### *ACKNOWLEDGMENTS*

Plate 5 is reproduced by courtesy of *The Times*, and Plate 9 by courtesy of *The Scotsman*. The remaining illustrations are drawn from the Commission's own collection.

**FORTY-FIRST ANNUAL REPORT**  
**OF THE**  
**FORESTRY COMMISSIONERS**  
**FOR THE YEAR ENDED**  
**30th SEPTEMBER, 1960**

---

FORESTRY COMMISSION,  
25, SAVILE ROW,  
LONDON, W.1.

*24th January, 1961*

*To:*

THE MINISTER OF AGRICULTURE, FISHERIES AND FOOD  
THE SECRETARY OF STATE FOR SCOTLAND

Gentlemen,

In pursuance of Section 7 (3) of the Forestry Act, 1945, I have the honour to transmit the 41st Annual Report of the Forestry Commissioners which covers the Forest Year ended 30th September, 1960.

I am, Gentlemen,

Your obedient Servant,

(Sgd.) RADNOR,

*Chairman.*

**GENERAL REVIEW**

1. The year was one of steady progress in fulfilling the Commission's objectives. The area planted increased by over 6,500 acres to 61,700 acres, which is greater than that planted in any year since 1956 and more than the annual average the Commission must maintain to achieve the programme of 300,000 acres in the five years 1959-1963 approved by Ministers in 1958; the area planted in Wales—13,167 acres—was the greatest ever planted in the Principality in one year. The Commission continued to be faced with difficulty in acquiring all the land necessary to support their programme and the problems resulting from inadequate reserves of plantable land were felt acutely. For the country as a whole, the reserve stood at 333,000 acres at the end of the year, as against a desirable reserve of 390,000 acres.

2. The last Report commented on the very small amount of damage done by fire despite the long fine summer of 1959, only five fires having caused loss assessed at over £1,000 or burning more than 20 acres. Any tendency to

complacency has been summarily checked by the experience of 1960: 1,596 acres were destroyed, with an estimated loss of £128,000. Three fires in Scotland accounted for the greater part both of the acreage burned and of the damage; 1,004 acres were destroyed, at an estimated cost of about £83,000. Most unfortunately one of these fires, at Bennachie in Aberdeenshire, where nearly 600 acres were destroyed at a cost of over £35,000, arose when burning undertaken by the Commission's staff with the intention of reducing fire risk got out of hand. Muirburning on an adjoining estate was the cause of the second large fire and the third was almost certainly started by a cigarette end thrown from a private motorcar. It is disappointing to the Commissioners that, when they had reason to think that their publicity and other precautions against fire were becoming more and more effective, incidents of this kind can still happen.

3. It is appropriate, in view of the general interest created by the publication of the monograph by Professor H. M. Steven and Dr. A. Carlisle on *The Native Pinewoods of Scotland*, to report the action taken by the Commission to preserve the remnants of the natural pinewood forests which they own. Research in tree breeding and the selection of élite trees from which to collect seed show that foresters can often profit from the natural variation that exists in any untouched stand of a wild tree. There is a broad belt of the eastern Highlands where the native Scots pine is still a dominant species. Some of the strains present should be ideally suited to Scottish conditions, since they have evolved over thousands of years; others may prove to be good material for the tree breeder, showing hybrid vigour when crossed with allied races. British forestry cannot afford to lose this irreplaceable reservoir of foundation stocks; and the country would be the poorer for the loss of what is truly a national monument. The Commission began investigations in their early days into methods of treating the native stands which they acquired at Glenmore in the Cairngorms, Glengarry and Glenloy in the Great Glen, and in the Black Wood of Rannoch. These researches go on, and in addition special reserves have been formed both at Glen Affric and at Rannoch, where no "outside" strains of pine, even from other parts of Scotland, will be introduced, and only natural seedlings, or planted trees from certified Glen Affric or Rannoch seed, will be allowed to grow.

4. In private forestry there was further progress in establishing the Timber Growers Organisation for England and Wales and the Scottish Woodland Owners Association for Scotland. The area of private woodlands under systematic management continued to increase, and by the end of the year was approaching 1,200,000 acres.

5. Prices for softwoods, which had fallen during the previous year, were slightly higher though still about 8 per cent. below those ruling in 1958. There was a welcome advance in the prices for the lower grades of oak, largely owing to the increasing demand for material for highway fencing. Generally, by the end of the year, merchants were able to sell all the material, both softwood and hardwood, which they had on offer. Sales of home-grown timber to the paper-pulp and board industries from Commission and private sources have more than doubled over the past three years; mills established in recent years continued to take large supplies. Progress was made with the investigations into the possibility of establishing a paper-pulp mill in the Scottish Highlands.

6. During the summer alarm was caused in some circles by what appeared to be a possibility that large stretches of Dartmoor and other open land in the south west would be planted by a private forestry syndicate. As a result there was considerable pressure on the part of some interested parties for legislation to bring private forestry, in the National Parks at least, under the control of the Planning Authorities. At the end of the year discussions were proceeding between the Ministry of Housing and Local Government, the Forestry Commission and the National Parks Commission (in consultation with the Timber Growers Organisation and the Country Landowners Association) which resulted in a voluntary scheme, details of which were announced in Parliament on 14th February, 1961.

7. A significant development within the Commission in 1960 was the introduction of a new working plans code. The concept of the "working plan"; which is in effect a blueprint for a forest or group of forests, has been the central feature of systematic forest management since the classical studies of French and German foresters in the nineteenth century: adapted by the pioneers of the Indian Forest Service to their own needs, it led to the monumental system of plans which became the model for nascent forest services throughout the world. The first step in the preparation of a plan is an exhaustive survey of the physical features of the site—such as soils, climate, and topography—and of the communications and markets available, the staff and labour required, the volume and increment of the crop and so on. On the basis of this investigation, the objects for which a forest will be managed are clearly defined. The plan thus drawn up is a direction to succeeding generations of foresters ensuring that in all stages of development the basic objectives are kept clearly in mind.

8. It has not been thought necessary in Great Britain to follow precisely the somewhat elaborate systems which have been adopted in some other countries, but the need for working plans has always been realised and plans have been in existence in the Commission since the earliest days. To meet the needs of a developing forest estate a new code of practice was adopted by the Commission from the beginning of the Forest Year 1960. It lays down detailed machinery for translating into action the objects of management.

9. The code has been widely circulated to Forest Services abroad and has received commendation from many sources, in particular from the Forestry Division of the Food and Agriculture Organisation of the United Nations.

10. At the same time intensified research has been conducted into problems of forest management, in particular the economic implications of various felling and thinning regimes. The main task has been the preparation of forest inventories covering about 90,000 acres. Work continued on methods of measuring forest crops and of estimating increment, and on statistical methods, the most important development being the use of electronic computers for forest enumeration.

11. In the recent past the emphasis has been on the establishment and maintenance of young crops, which was necessarily the major preoccupation of foresters both in the Commission and on private estates. As the forests planted before the war develop, and the great plantations of the early post-war years come into the thinning stage, the emphasis is passing to management, production and marketing.

## THE YEAR'S WORK

### PRIVATE FORESTRY

12. Private owners planted 34,400 acres under the various grant schemes and it is estimated that 2,500 acres were planted without the aid of grants. The total area planted on private estates was thus about 36,900 acres.

13. The area dedicated rose by 46,176 acres net to 621,957 acres, and the number of dedication schemes by 233 to 1,704. In addition, preparations for dedicating another 60,969 acres, representing 257 schemes, were well advanced. The acreage of woods not dedicated but managed according to an approved plan of operations fell (mainly owing to transfers to dedication) by 592 acres to 154,263 acres, although the number of schemes increased by 20 to 546; plans of operations for a further 287 acres (3 schemes) were in hand. Grants paid amounted to £1,150,000; details are given in Tables 4 and 23-25 of Appendix I.

### FORESTRY COMMISSION OPERATIONS

14. Although there were variations between different parts of the country, the general pattern of the weather was much more like what we expect in this country than it was in 1959. The long dry spell of that year broke shortly after the beginning of the Forest Year and the autumn and winter were generally wet, though not excessively cold except in the more northerly or exposed districts. In most areas there was a dry spell in the spring which did not, however, have any significant effect on tree growth; it was followed over much of the country by an abysmally wet and dreary summer, the Forest Year ending with floods in many areas. There was little interference with silvicultural operations but in some parts, notably in Scotland, there was appreciable windblow; indeed one Conservator remarks that in some areas "our forests have now reached a state where the effect of weather on the stability of plantations is at least as important as its effect on nursery and new plantation growth". The total blown in Commission plantations in Great Britain was about half a million hoppus feet.

### Finance

15. Receipts from the Grant-in-Aid voted by Parliament amounted to £10,702,000 and payments to £13,930,162. Receipts from the sale of timber, rents and sundry sources amounted to £3,130,639.

### Staff

16. At 30th September, 1960, the non-industrial staff totalled 2,637 as compared with 2,649 a year before: of these one-half were in the Forester grades. At the same date, the number of industrial employees—men, women and juveniles—was 12,032\* a decrease of 480 over the year. This decrease, which follows the general tendency which first appeared in 1954, when 13,621 were employed, requires explanation since it may appear to cast doubt on the value of forestry as a counter to depopulation in the uplands. It reflects in part improved technique and increased productivity by the workers, and has been accompanied by an increase in average earnings per head amounting to close on 40 per cent. since 1954, which is greater than the increase of nearly 30 per cent. in the basic wage. The increasing use of self-employed contractors—who are not included in the figures above—for work which in the

---

\* This figure includes 282 part-time workers; the number of part-time workers on 1st October, 1959 was 244.



past has been done by Commission employees has also had an effect. In any case, the number of staff employed by the Commission does not directly reflect the employment arising from forestry; those employed by timber merchants and in the ancillary services such as transport, shops, public services, must be added. As the volume of production increases, it is obvious that the total employment in forestry will grow though, since it is the Commissioners' policy to sell as much of their timber standing as practicable, the growth may not always be reflected in the numbers directly employed by the Commission.

17. Agreement was reached by the Forestry Commission's Industrial and Trade Council on increases in the wage rates of forest workers, and a reduction in the 46-hour working week. In February, 1960, the minimum adult male rate became 163s. 6d. and working hours 45 per week. At the end of the Forest Year, the Council had under consideration a further application for an increase in wages; in the result, the basic weekly wage for adult workers was increased by 9s. to 172s. 6d. in November, 1960.

### **Acquisition of Land**

18. The gross area acquired, including land to which entry was allowed in advance of legal completion, was 89,357 acres, of which 62,070 acres were plantable. Disposals and adjustments of areas totalled 10,492 acres, of which 2,826 acres were plantable land and the remainder unplatable or grazing and other agricultural land. The net addition to the Commission's estate was 78,865 acres, of which 59,244 acres were plantable. Of this 69 per cent. was bare land, 28 per cent. was old woodland and 3 per cent. standing woods. By the end of the year the Commission's estate had reached a total of 2,475,300 acres, of which 1,618,400 acres was forest land, that is, acquired plantations, plantations established by the Forestry Commission, land remaining to be planted and nurseries, the balance consisting of rough grazing and other agricultural land, Forest Workers' Holdings and unplatable and miscellaneous land. The average price paid for plantable land was £4 8s. 0d. per acre against £3 14s. 0d. in 1959. Prices per acre ranged from about 6d. for 51 acres of a derelict coal tip for planting in co-operation with local authorities, to £10 for 17 acres of land to provide an access for a larger block. The range of £3 to £6 10s. 0d. per acre covered 64 per cent. of the prices paid. The average rent paid for plantable land was 4s. 4d. per acre; rents ranged from 2s. 0d. per acre for 40 acres with specially high fencing costs to 6s. 6d. per acre for 100 acres of good quality forest land in a convenient situation. Over 60 per cent. of the rents were within the range of 2s. 0d. to 3s. 6d. per acre.

### **Planting**

19. The area planted was 61,686 acres, an increase of 6,550 acres over 1959. Of this, 18,742 acres were in England, 29,777 acres in Scotland and 13,167 acres in Wales. The proportion between the planting of bare land (66 per cent.) and the replanting of old woodlands (34 per cent.) remained much as in previous years.

### **Production and Disposal of Forest Produce**

20. The Commission had no difficulty in disposing of all their produce either by direct working or by sales standing. The total volume thinned and clear felled in Commission forests was 20·1 million hoppus feet, an increase of 1·5 million over the previous year. Of this quantity, timber merchants cut

10 million hoppus feet (7·9 in 1959) or 50 per cent. (43 per cent. in 1959); the balance was cut by direct labour. Direct sales of mining timber fell by about 12 per cent.; there was a slight increase in the volume of pulpwood despatched, while sales of saw logs remained at about the same level as in 1959.

21. During the year agreements were signed for sales by tender of standing timber and thinnings totalling 14·5 million hoppus feet, an increase of 3·8 million over the previous year. Three auction sales (two in Scotland and one in Wales) were held during the year; a total of 769,000 hoppus feet was offered and all except 95,000 hoppus feet was sold.

### Research

22. The year was marked by the reconstitution of the Advisory Committee on Forest Research, which was first set up in 1929. To cover the wider field now required, additional appointments were made in February, 1960. The terms of reference were re-stated in the following terms: "to review the Commission's programme of research and advise generally on research problems". Membership is given on page 18.

23. Over 500 visitors from 27 countries were received at Alice Holt Lodge, the main research station. Among them were a party of students from the School of Forestry at Nancy; it was the first occasion on which a body of students from France, with its exceptionally long history of systematic forestry, had come to Britain to study forestry.

24. The brief notes below indicate some of the more important aspects of the work carried out during the year; more detail will be found in the 1960 *Report on Forest Research*, which will be published in 1961, in various Forestry Commission publications and in papers in forestry journals.

25. Increasing study is being given to the problems of replacing crops at the end of the rotation, and to the stability of trees and plantations. Work on the nutrition of forest crops continues, and the first aerial applications of fertilisers made on checked spruce crops, in Cornwall, have yielded impressive results. In the north, special attention was paid to the distribution and extent of root growth in young conifer crops on ploughed land.

26. New experiments were laid down with Sitka spruce of widely varying American and British provenances and also with *Pinus nigra*, with special reference to atmospheric pollution. The use of herbicides continued to be studied both in the forest and the nursery. Work was again carried out on problems of plant storage and results from experiments in cold storage were encouraging. Work on the selection of elms of desirable silvicultural and timber characteristics was started.

27. The selection of seed sources and the choice of outstanding trees for breeding work was continued. The present Register of Seed Sources contains 403 classified entries covering 7,261 acres. Information from this Register was made available to the Forest Tree Seed Association of England and Wales who, following the example of the sister Association in Scotland, have compiled a Register of Seed Sources for their members.

28. In forest pathology the emphasis was again on research into root and butt rots, especially *Fomes annosus*. Work was intensified on the control of nursery diseases.

29. In entomology, the annual winter survey of Pine Looper moth (*Bupalus piniarius*) populations showed that in only one forest, Cannock Chase, had numbers increased to threatening proportions, but egg counts carried out during the summer of 1960 were not considered high enough to demand control measures. Advances were made in the study of the Pinhole borer, *Trypodendron lineatum*.

30. The Advisory Committee on the Utilisation of Home Grown Timber met twice during the year. The main effort has been devoted to the study of the properties of home-grown Sitka spruce, including its pulping qualities. This work has been carried out in close co-operation with the Department of Scientific and Industrial Research. Other work has included assessments of the specific gravity and moisture content of other important softwoods grown in Great Britain. The Committee had also under review the growing of hardwoods for pulpwood, and the use of home-grown sawn softwoods in house building and in the manufacture of cable-drums.

31. The second Forest Machinery Exhibition and Demonstration was organised with the co-operation of the Yorkshire Agricultural Society at Harrogate in May and drew an entry of sixty-four manufacturers and agents. The event was well attended by forestry interests in this country and a welcome number of visitors from overseas. Machinery development projects include an expansion in the application of four-wheel drive to small tractors; power-driven trailers; new timber extraction techniques; and new machines for cleaning forest surface drains.

32. Grants were made for research work on forest soils at the Macaulay Institute, Aberdeen, at Rothamsted Experimental Station and the Imperial Forestry Institute, Oxford; on soil mycology and soil fauna at the University College of North Wales, the Universities of Edinburgh and London, and at Rothamsted; on tree diseases at the Universities of Cambridge, Aberdeen and Southampton. A grant for research on shelterbelts was made to the Department of Forestry at Edinburgh, one for research on the flowering of trees to the Botany Department at the University College of Wales, Aberystwyth, and one for research on hydrology to the Imperial Forestry Institute, Oxford. Other grants assisted research on the survey of Scottish oakwoods, bird boxes in woodlands and tannin extractives from conifer bark.

### Education

33. At the beginning of the year there were 133 students in residence at the Commission's four Forester Training Schools. Of the 60 men who sat the Final Examination and were granted certificates, 41 took up employment with the Forestry Commission, 12 returned to the Northern Ireland Forest Service, three returned to the overseas forest services which had sent them for training and four took up other forestry employment in the United Kingdom.

34. There have been significant improvements in the pattern of training at the Schools. There is still emphasis on the need for manual skill but more attention is given to the organisation and supervision of practical work and students are taught the principles of method study (including "job safety" and "job instruction") to enable them to play a bigger part in the training of

forest workers. The supervisory duties of the Forester, and particularly the problem of supervision, have been covered in more detail, with extended use of practical exercises. Tool maintenance and the use and maintenance of powered chain saws are dealt with in detail. More practice is given in the field work connected with the preparation of working plans, while the syllabus for mensuration has been brought into line with present day needs.

#### **Short courses for Woodmen from Private Estates**

35. Three six-week courses for woodmen were held; two on the Chatsworth Estate in Derbyshire and one on the Atholl Estate in Perthshire, by courtesy of the owners. Thirty-seven men attended and all but three passed either the examination for the Woodman's Certificate of the Royal Forestry Society of England and Wales or for the Junior Forester's Certificate of the Royal Scottish Forestry Society.

#### **Other Courses**

36. Two three-day courses for foresters from private estates were conducted in conjunction with the Royal Scottish Forestry Society, one at the Commission's Faskally School, on chain saws, and the other at Bowhill and Philiphaugh estates, on thinning of plantations. A course of one week on forestry for Scottish schoolteachers was held at Benmore Forester Training School.

#### **Northerwood House**

37. Twenty-two courses were conducted for Forestry Commission staff; places were offered on some of these courses to foresters abroad under an International Labour Office scheme. Other courses were run for schoolteachers, Planning Officers of County Councils and other local government officers, and landowners and agents. Forestry students from the Universities of Oxford, Edinburgh, Aberdeen and from the University College of North Wales stayed at the house while undertaking field training.

#### **Conferences**

38. The Chairman of the Commission headed the United Kingdom delegation to the Fifth World Forestry Congress, which was held in Seattle, U.S.A. from 29th August to 10th September, 1960. The delegation included Mr. E. Bryan Latham (a Commissioner), the Director General, the Deputy Director General, Mr. J. S. R. Chard (Conservator for North-West England) and Mr. G. D. Holmes (Research Branch). In May, 1960, the Commission acted as hosts to a Joint F.A.O.-E.C.E. Study Group on Forest Machinery Development which made a short tour of places of interest including the National Institute of Agricultural Engineering and the Forest Machinery Exhibition at Harrogate. In June, 1960, the Commission were again hosts to a party of distinguished foresters from abroad, when they organised, on behalf of F.A.O., a study tour in South-East England on the restoration of degraded hardwood forests.

#### **Publications**

39. Twelve new publications were issued through H.M. Stationery Office:
- (1) Fortieth Annual Report of the Forestry Commission, 1959 (H.C. 162. Session 1959-60) (5s. 6d.)
  - (2) Board Mill Survey: Economic Study. (5s. 0d.)
  - (3) Bulletin 33. The Status and Development of Elm Disease in Britain. (10s. 0d.)

(4) Leaflet 45. The Roe Deer. (1s. 6d.)

Forest Records:—

(5) No. 39. The Collection of Cones from Standing Trees (3s. 6d.)

(6) No. 40. Preliminary Yield Table for Poplar. (1s. 6d.)

(7) No. 41. *Fomes annosus* in Great Britain: An assessment of the situation in 1959. (4s. 0d.)

(8) No. 42. Use of Home-grown Softwood in Housing Construction. (1s. 3d.)

(9) No. 43. Establishment Methods for Poplars. (2s. 0d.)

(10) Booklet 5. Conversion Tables for Forest Research Workers (4s. 0d.)

(11) Cambrian Forests Guide. (5s. 0d.)

(12) Westonbirt Arboretum Guide. (6d.)

One free pamphlet, *Fire Protection on Private Estates in Scotland*, was issued.

### Forest Parks

40. It is remarkable that in spite of the very bad weather, the number of people using the camping sites in the Parks again increased. At Lewisburn camping site in Northumberland, which was opened only in 1957 and has been described by a visitor as one of the finest anywhere in Europe, a total of 25,567 over-night stays was recorded; altogether the total for the eight sites in Great Britain was 267,000.

41. There have been no additions to the number of camp sites but, in general, facilities at existing sites have been improved to provide for the increasing number of visitors. The David Marshall Lodge, the generous gift of the Carnegie United Kingdom Trust, was opened during the year at Aberfoyle in the Queen Elizabeth Forest Park. The Lodge is called after a former chairman of the Trust, Mr. David Marshall of Dunfermline.

RADNOR, *Chairman*.

R. C. G. COTTERELL.

LLOYD O. OWEN.

JOHN STIRLING.

D. C. BOWSER.

BRYAN LATHAM.

F. W. STRANG STEEL

E. GWYN DAVIES.

J. MAXWELL MACDONALD.

TOM TAYLOR.

H. A. TURNER, *Secretary*,

25, Savile Row,

London, W.I.

# COMMITTEES

## National Committees

The National Committees met monthly except in August. The membership of these Committees at 30th September, 1960, was as follows:—

### NATIONAL COMMITTEE FOR ENGLAND

Lt.-Col. Sir Richard C. G. Cotterell, Bt. (*Chairman*), Mr. C. M. Floyd, Mr. A. P. F. Hamilton, Mr. E. Bryan Latham, The Duke of Northumberland, Mr. W. H. Pearson. *Secretary to the Committee*: Mr. A. D. Palmer.

### NATIONAL COMMITTEE FOR SCOTLAND

Major D. C. Bowser (*Chairman*), Major D. J. Brodie, Captain J. Craig, Mr. J. McNaughton, Sir John Stirling of Fairburn, Major F. W. Strang Steel, Mr. Robert Taylor. *Secretary to the Committee*: Mr. T. H. McGeorge.

### NATIONAL COMMITTEE FOR WALES

Mr. Lloyd O. Owen (*Chairman*), Alderman E. Gwynfryn Davies, Mr. A. P. F. Hamilton, Mr. J. E. Lewis, Dr. Richard Phillips, Col. P. R. D. Spurgin. *Secretary to the Committee*: Mr. G. F. Taylor.

## Regional Advisory Committees

The membership of the Committees at 30th September, 1960, was as follows:—

### ENGLAND

#### *North West Conservancy*

The Earl of Bradford (*Chairman*), Alderman J. V. Allen, Mr. J. L. Benson, Mr. J. T. Edmondson, Major Charles Graham, The Earl of Lonsdale, Mr. R. W. S. Thompson, Mr. C. J. Venables, Mr. D. H. White. *Secretary to the Committee*: Mr. J. W. Elliott. The Committee met in November, 1959, and April and August, 1960.

#### *North East Conservancy*

Lord Bolton (*Chairman*), Professor J. S. Allen, Mr. R. Bowman, Mr. R. H. B. Hamersley, Mr. W. P. Hedley, Mr. R. Minto, Mr. R. Stanley, Mr. H. Wardale, Mr. W. M. J. Worsley. *Secretary to the Committee*: Mr. L. A. Chaplin. The Committee met in December, 1959, and June, 1960.

#### *East Conservancy*

Major Sir Richard Proby, Bt. (*Chairman*), Col. M. E. St. J. Barne, Mr. J. S. L. Gilmour, Mr. N. D. G. James, Mr. J. C. P. Langton, Mr. G. Oates, Major R. B. Verney, Mr. S. A. Wegg, The Earl of Yarborough. *Secretary to the Committee*: Mr. G. H. Clark. The Committee met in October, 1959, and August, 1960.

### *South East Conservancy*

Mr. G. E. H. Palmer (*Chairman*), Mr. A. E. Aitkins, Mr. G. E. H. Calvert, Col. Sir Ralph S. Clarke, Viscount Cowdray, Mr. A. L. F. Hills, Sir William Mount, Bt., Major R. E. Whitaker. *Secretary to the Committee*: Mr. H. W. Gulliver. The Committee met in May, 1960.

### *South West Conservancy*

Sir Dennis F. B. Stucley (*Chairman*), Mr. J. E. Garfitt, Mr. H. P. R. Hoare, Lord Hylton, Mr. A. E. Jordan, Mr. J. R. Maeer, Major J. L. Pilling, Mr. L. C. Wheeler, Lt.-Comdr. T. J. B. Midway-White. *Secretary to the Committee*: Mr. R. Coote. The Committee met in March and June, 1960.

## SCOTLAND

### *North Conservancy*

Mr. A. B. L. Munro-Ferguson (*Chairman*), Mr. J. Armstrong, Mr. G. Brown, Col. A. E. Cameron, Mr. C. Campbell, Mr. R. Dean, Mr. J. Grant, Major I. G. H. Houldsworth, Mr. A. R. Mackenzie. *Secretary to the Committee*: Mr. M. Nicolson. The Committee met in October, 1959, and May, 1960.

### *East Conservancy*

Professor H. M. Steven (*Chairman*), The Hon. James Bruce, The Lord Glentanar, Mr. J. B. Hendry, Sir Ian Forbes Leith, Mr. A. Duncan Millar, Lt.-Col. J. W. Nicol, Mr. R. A. Raffan, Mr. W. J. Riddoch. *Secretary to the Committee*: Mr. J. Steele. The Committee met in November, 1959, and May, 1960.

### *South Conservancy*

Major Simon F. Macdonald Lockhart (*Chairman*), Mr. A. B. Duncan, Mr. H. Foster, Mr. S. E. A. Landale, Mr. J. H. Mackay, Comdr. D. Herries Maxwell, Mr. D. M. McQueen, Major John Sprot, Mr. R. Finlay Wilson. *Secretary to the Committee*: Mr. T. Farmer. The Committee met in November, 1959, and March, 1960.

### *West Conservancy*

Sir George I. Campbell of Succoth, Bt., (*Chairman*), Mr. P. Campbell, Major R. Orr Ewing, Lt.-Col. W. D. H. C. Forbes, Mr. R. M. Hamilton, Professor J. Kirkwood, Mr. W. D. MacGregor, Mr. P. S. Murray. *Secretary to the Committee*: Mr. B. Kinnaird. The Committee met in December, 1959, and March and September, 1960.

## WALES

### *North Conservancy*

Col. P. R. Davies-Cooke (*Chairman*), Mr. R. W. Allan, Capt. G. L. Bennett-Evans, Mr. T. Jones, Capt. J. Hext Lewis, Professor E. C. Mobbs, Lt.-Col. H. M. C. Jones-Mortimer, Mr. David Tudor, Col. J. F. Williams-Wynne. *Secretary to the Committee*: Mr. K. Mayhew. The Committee met in November, 1959, and March, 1960.

*South Conservancy*

Colonel C. G. Traherne (*Chairman*), Mr. D. G. Badham, Mr. B. Davies, Major J. D. D. Evans, Mr. I. G. Gordon, Mr. H. A. Hyde, Mr. A. J. Llewellyn, Mr. M. H. Maxwell, Brigadier R. P. Waller. *Secretary to the Committee*: Mr. E. H. Bradford. The Committee met in October, 1959, and March and September, 1960.

**Home Grown Timber Advisory Committee**

The membership of the Committee at 30th September, 1960, was as follows:—

- |                                 |       |   |
|---------------------------------|-------|---|
| The Earl of Radnor              |       | Chairman, Forestry Commission<br>( <i>Chairman of the Committee</i> ) |
| Mr. A. P. F. Hamilton ...       | ... } | Forestry Commission   |
| Sir Arthur Gosling ...          | ... } |   |
| Mr. James Macdonald ...         | ... } |   |
| Mr. G. B. Ryle ...              | ... } |   |
| Mr. A. Watt ...                 | ... } |   |
| Mr. J. R. Thom ...              | ... } |   |
| Mr. H. A. Turner ...            | ... } |   |
| Mr. J. L. May                   | ... } | Board of Trade  |
| Lord Bolton ...                 | ... } | Timber Growers Organisation   |
| Major Sir Richard G. Proby, Bt. | ... } |   |
| Mr. W. E. Hiley ...             | ... } |   |
| Mr. Langshaw Rowland ...        | ... } |   |
| The Duke of Buccleuch ...       | ... } | Scottish Woodland Owners<br>Association                               |
| Lt.-Col. W. D. H. C. Forbes ... | ... } |   |
| Capt. J. Maxwell Macdonald ...  | ... } |   |
| Mr. A. B. L. Munro-Ferguson...  | ... } |   |
| Mr. G. R. Jacob ...             | ... } | Federated Home Timber Associations                                    |
| Mr. C. J. Venables ...          | ... } |   |
| Mr. G. E. H. Calvert ...        | ... } |   |
| Mr. F. Sellers ...              | ... } |   |
| Mr. J. C. McGregor ...          | ... } | Home Timber Merchants Association<br>of Scotland                      |
| Mr. W. J. Riddoch ...           | ... } |   |
| Mr. R. Finlay Wilson ...        | ... } |   |
| Mr. J. B. Dawson                | ... } | Timber Trades Federation  |
- Secretary*: Mr. R. G. Brown.

The Committee met in November, 1959, and January and April, 1960.



## Advisory Committee on the Utilisation of Home Grown Timber

The Committee was reconstituted with effect from 1st October, 1960, with the following membership:—

The Earl of Radnor		Chairman, Forestry Commission <i>(Chairman of the Committee)</i>
Sir Arthur Gosling ...	... }	Forestry Commission
Mr. James Macdonald ...	... }	
Mr. W. H. J. Gillham ...		Board of Trade
Mr. F. G. O. Pearson		Forest Products Research Laboratory
Mr. Langshaw Rowland	... }	The Timber Growers Organisation
Col. J. F. Williams-Wynne	... }	
Capt. J. Maxwell Macdonald ...		Scottish Woodland Owners Association
Mr. F. Sellers		Federated Home Timber Associations
Mr. J. C. McGregor		Home Timber Merchants Association of Scotland
Mr. Phillip O. Reece		Timber Development Association
Mr. G. R. Jacob		Home Grown Timber Marketing Cor- poration
Dr. G. O. Aspinall	... }	Independent Members
Mr. W. E. Bruce	... }	
Mr. C. H. Farrar	... }	
Mr. W. G. Trust	... }	

*Secretary:* Mr. E. G. Richards.

### Mechanical Development Committee

The membership of the Committee at 30th September, 1960, was as follows:—

Mr. James Macdonald ...	Deputy Director General, Forestry Commission
	(Chairman of the Committee)
Mr. T. R. Peace ...	} Forestry Commission
Mr. E. G. Richards ...	
Mr. J. W. L. Zehetmayr ...	
Mr. D. M. Beaton ...	
Mr. C. D. MacMahon ...	
Mr. M. C. Richardson ...	
Mr. J. E. Tilley ...	... Federated Home Timber Associations
Mr. David Brown	Home Timber Merchants Association of Scotland
Mr. H. J. Hamblin	National Institute of Agricultural Engineering
Dr. J. E. Keown	Department of Mechanical Engineering, Glasgow University.
Mr. A. L. P. F. Wallace of Canda-craig	Scottish Landowners Federation
	Secretary: Col. R. G. Shaw.

The Committee met in April and September, 1960.

### Advisory Committee on Forest Research

At 30th September, 1960, the membership of the Committee, at which the Chairman of the Commission presides, was as follows:—

Mr. F. C. Bawden  
Professor F. W. Rogers Brambell  
Professor R. Brown  
Dr. D. J. Finney  
Dr. J. W. Gregor  
Dr. F. Y. Henderson  
Mr. G. V. Jacks  
Professor E. C. Mobbs  
Professor W. H. Pearsall  
Professor R. D. Preston  
Professor H. M. Steven  
Dr. A. B. Stewart

Secretary: Mr. T. R. Peace.

The Committee met in July, 1960.

# APPENDIX I

## FINANCIAL AND STATISTICAL TABLES

### FORESTRY FUND: SUMMARY

Year ended 30th September

Table 1.

£

	Balance from Preceding Year	Receipts			Payments
		Total	From Parli- amentary Votes	From Sales of Produce, Rents, etc.	
<b>GRAND TOTAL</b> 1920-1960 ...	—	157,054,576	118,532,800	38,521,776	156,741,196
1920-1929 ...	—	4,421,484	3,570,000	851,484	4,502,018
1930-1939 ...	—	8,114,652	6,292,800	1,821,852	7,926,093
1940-1949 ...	—	26,370,778	18,945,000	7,425,778	26,238,789
1950 ...	240,014	7,030,748	5,495,000	1,535,748	7,025,414
1951 ...	245,348	8,161,846	6,350,000	1,811,846	8,012,098
1952 ...	395,096	9,258,033	6,893,000	2,365,033	9,277,642
1953 ...	375,487	9,258,319	7,041,000	2,217,319	9,421,426
1954 ...	212,380	10,357,941	7,850,000	2,507,941	10,373,211
1955 ...	197,110	11,131,827	8,473,000	2,658,827	11,053,705
1956 ...	275,232	11,087,690	8,351,000	2,736,690	11,235,170
1957 ...	127,752	12,500,922	9,360,000	3,140,922	12,209,471
1958 ...	419,203	12,112,533	8,993,000	3,119,533	12,459,450
1959 ...	72,286	13,415,164	10,217,000	3,198,164	13,076,547
1960 ...	410,903	13,832,639	10,702,000	3,130,639	13,930,162
1961 ...	313,380	—	—	—	—

*Notes.*—The above amounts are cash actually received or paid out. The balance carried forward to 1961 consists of £413,641 cash at bank (Table 5) less £100,261 for cash suspense items included in sundry debit balances and sundry creditors (Table 5).

Table 2

## ACCOUNT OF FORESTRY OPERATIONS FOR THE

<i>1959</i> £000's		1960 £000's
	Preparation and formation of plantations:—	
538	Preparation of ground including ploughing	551
852	Planting including cost of plants ...	965
502	New drains and fences ... ..	555
		2,071
	Maintenance of plantations:—	
243	Beating up, including cost of plants	276
1,053	Weeding and cleaning plantations	950
384	Maintenance of drains and fences	362
41	Enrichment, including cost of plants	55
264	Maintenance of roads ... ..	234
		1,877
	Forest protection:—	
260	Fire protection	273
228	Other protection	259
		532
	Production:—	
778	Felling, extraction and processing ... ..	756
195	Carriage and other expenditure ... ..	234
40	Felled timber: decrease in stocks and work in progress	63
		1,053
558	Estate expenses	613
		6,146
	Overheads:—	
	Forest (including wet time, holidays etc. of Forest Workers and salaries and expenses of Foresters) ...	2,555
2,262	District (salaries and expenses of District Officers) ...	170
150	Conservancy (salaries and expenses of Conservancy Office staff) ... ..	616
595	Directorate and Headquarters (salaries and expenses) ...	534
		3,875
5,846	Interest on capital advanced by the Exchequer	6,692
		16,713
<u>15,326</u>		<u>16,713</u>

Table 3

## NURSERIES ACCOUNT FOR THE

<i>1959</i> £000's		1960 £000's
166	Seedbeds ... ..	153
255	Transplant lines ...	266
121	Other expenditure	92
267	Overheads ...	288
37	Decrease in Stocks	83
		882
<u>846</u>		<u>882</u>

YEAR ENDED 30TH SEPTEMBER, 1960

<i>1959</i> £000's		£000's	1960 £000's
2,085	Sales of Forest Produce	2,269	
141	Forest Produce used on the Commission's Estate	143	
284	Sundry forestry income	157	
309	Estate income	286	
Dr. 7	Lake Vyrnwy Joint Forestry Scheme (with Liverpool Corporation) ... ..	4	
		<hr style="width: 50px; margin-left: 0;"/>	2,859
12,514	Balance, being net cost of growing timber during the year		13,854

---

  
15,326  

---

---

  
16,713  

---

YEAR ENDED 30TH SEPTEMBER, 1960

<i>1959</i> £000's		£000's	1960 £000's
116	Sales of plants ... ..		70
—	Increase in Stocks ... ..		—
3	Sundry income ... ..		1
727	Plants used in the Commission's forests (charged in Table 2)		811
			<hr style="width: 50px; margin-left: 0;"/>
			882
			<hr style="width: 50px; margin-left: 0;"/>
			846
			<hr style="width: 50px; margin-left: 0;"/>

**Table 4**

NET EXPENDITURE ON SERVICES OTHER THAN FORESTRY OPERATIONS  
DURING THE YEAR ENDED 30TH SEPTEMBER, 1960

1959 £000's		1960 £000's
<i>PRIVATE FORESTRY</i>		
Grants under Dedication Schemes:—		
2	Basis I ... ..	6
471	Basis II: Planting Grants ...	546
103	Management Grants*	355
110	Maintenance Grants ...	5
54	Approved Woodlands Planting Grants	76
73	Small Woods Planting Grants	78
3	Other Planting Grants ...	5
55	Scrub Clearance Grants	68
32	Thinning Grants ... ..	10
1	Grants to Co-operative Societies	1
4	Miscellaneous ... ..	3
178	Administration including advisory services ...	226
1,086		1,379
 <i>RESEARCH</i>		
176	Silviculture, including Nursery Work	182
25	Genetics ... ..	29
39	Mensuration, Census, etc.	48
31	Pathology and Entomology	32
5	Machinery ...	3
2	Utilisation ...	1
15	Grants to Institutions ...	16
21	Miscellaneous ...	25
26	Administration	27
340		363
1,426	<i>Carry forward</i> ... ..	1,742

\* Includes the balance of grants due, but not paid, in 1959.

Table 4—continued

1959 £000's	<i>Brought forward</i>	1960 £000's
1,426		1,742
	<i>EDUCATION</i>	
75	Forester Training Schools	62
6	Short Courses ... ..	8
6	Forestry Apprenticeship Scheme	3
6	Northerwood House ...	6
1	Miscellaneous	—
20	Administration	15
<hr/> 114		<hr/> 94
	<i>SPECIAL SERVICES</i>	
68	Licensing of Felling ...	62
12	Information and Shows...	11
7	Miscellaneous ...	3
4	Administration	4
<hr/> 91		<hr/> 80
<hr/> 1,631		<hr/> 1,916

*Note.*—Total net expenditure from 29th November, 1919 to 30th September, 1960, under the main heads of this table was as follows:—

	£000's
Private Forestry ...	... 8,157
Research	... 3,287
Education	... 2,114
Special Services ...	... 2,673
	<hr/> 16,231

Table 5

		BALANCE SHEET AS AT		
		1960		
1959		£000's	£000's	£000's
£000's				
	Capital Account:—			
85,652	To 30th September 1959 ... ..		94,238	
10,217	Grants in aid of Forestry Fund during year...	10,702		
	Deduct cost of services other than Forestry			
1,631	Operations (Table 4)... ..	1,916		
			<u>8,786</u>	
94,238			103,024	
42,485	Interest accrued		<u>49,177</u>	
136,723				152,201
	Value of properties, including New and Dean Forests, acquired			
979	under Forestry (Transfer of Woods) Orders, 1924-45 ... ..			975
	Value at 21 September, 1939 of properties acquired under Forestry			
9	(Transfer of Woods from the Secretary of State for Air) Order,			9
	1939 ... ..			
	Value of properties acquired by transfer from the Minister of			
23	Agriculture, Fisheries and Food under Section 4 of Forestry			
	Act, 1945 ... ..			23
	Value of timber acquired by transfer from H.M. Board of Admiralty			
8	under Section 4 of Forestry Act, 1945 ... ..			8
73	Gifts of land and buildings ... ..			76
				<u>153,292</u>
137,815				153,292
6,391	Provision for pensions and gratuities...			6,939
601	Sundry Creditors ... ..			842
	Insurance Account:—			
	Balance at 30th September 1959 ...		331	
	Provision made during year		<u>49</u>	
			380	
	Less—Losses during year		<u>130</u>	
331				250
				<u>161,323</u>
<u>145,138</u>				<u>161,323</u>



30TH SEPTEMBER, 1960

1960

1959	At 30th September 1959	Net addi- tions during year	Depre- ciation for year	
£000's	£000's	£000's	£000's	£000's
Fixed Assets, at cost less Depreciation:				
Land ... ..	4,672	394	—	5,068
Roads and bridges ... ..	11,368	1,681	—	13,052
Buildings ... ..	8,452	284	147	8,589
Powered vehicles and machines ...	744	194	107	834
Sundry plant, equipment and furni- ture ... ..	167	34	35	166
25,403	25,403	2,587	289	27,709
Current Assets:—				
48 Farm stocks ... ..		27		
2,718 Nursery stocks, supplies at forests, etc. ...		2,674		
472 Felled timber: stocks and work in progress		409		
435 Debtors and sundry debit balances ...		520		
133 Loans to Private Woodland Owners ...		150		
502 Cash at banks and in hand		414		
		4,194		4,194
Debentures and shares:—				
15 Debentures in Cowal-Ari Sawmilling Co. Ltd., Argyll ... ..		15		
1 Shares in Parkend Saw Mills Ltd., Forest of Dean ... ..		1		
		16		16
Forests—Net cost of growing timber:—				
To 30th September, 1959 ... ..		115,411		
Adjustment to provision for pensions and gratuities ... ..		36		
During year:				
Net cost transferred from Forestry Operations Account (Table 2) ... ..		13,854		
Growing timber purchased		103		
115,411		13,957		129,404
145,138				161,323

*Note:*—The Balance Sheet and preceding accounts have not yet been audited by the Comptroller and Auditor General.

Table 6

At 30th September, 1960

Thousand acres

	Great Britain	England	Scotland	Wales
Total area ... ..	2,475.3	730.5	1,395.4	349.4
Forest Land: Total ... ..	1,618.4	587.0	740.1	291.3
Standing woods acquired ... ..	83.2	52.0	25.2	6.0
Planted by Forestry Commission ... ..	1,200.1	435.3	535.3	229.5
To be planted ... ..	332.9	98.8	178.8	55.3
Nurseries ... ..	2.2	.9	.8	.5
Other Land: Total ... ..	856.9	143.5	655.3	58.1
Agricultural and grazing ... ..	505.5	62.2	398.6	44.7
Forest Workers' Holdings ... ..	14.7	6.1	5.6	3.0
Unplatable and miscellaneous ... ..	336.7	75.2	251.1	10.4

## LAND MANAGED BY THE AGRICULTURAL DEPARTMENTS

Table 7

At 30th September, 1960

Acres

	Great Britain	England	Scotland	Wales
Total area ... ..	444,215	86,588	331,386	26,241
Forest land ... ..	36,156	937	33,859	1,360
Agricultural and other land ... ..	408,059	85,651	297,527	24,881

## FOREST LAND ACQUIRED IN FOREST YEAR 1960

Table 8

Acres

	Great Britain	England	Scotland	Wales
Total area ... ..	59,244	19,983	32,599	6,662
Standing woods ... ..	1,700	1,211	477	12
Bare land for afforestation ... ..	40,702	7,511	28,216	4,975
Former woodland for replanting ... ..	16,842	11,261	3,906	1,675

SUMMARY STATEMENT OF LAND ACQUIRED TO THE END OF  
FOREST YEAR 1960

**Table 9**

Acres

	Great Britain	England	Scotland	Wales
Total acquired ... ..	2,364,199	630,326	1,389,818	344,055
By lease or feu: Total ... ..	652,425	260,636	288,528	103,261
Forest land ... ..	489,652	235,804	169,374	84,474
Other land ... ..	162,773	24,832	119,154	18,787
By Purchase: Total ... ..	1,711,774	369,690	1,101,290	240,794
Forest land ... ..	1,047,276	314,063	534,757	198,456
Other land ... ..	664,498	55,627	566,533	42,338

STOCKS OF NURSERY PLANTS

**Table 10**

At 30th September, 1960

Thousand plants

	Great Britain	England	Scotland	Wales
Total stocks ... ..	487,656	116,140	275,176	96,340
Transplants ... ..	185,107	51,351	95,939	37,817
Seedlings ... ..	302,549	64,789	179,237	58,523

NURSERY PLANTS SOLD TO THE TRADE IN THE FOREST YEAR 1960

**Table 11**

Thousand plants

	Total	Transplants	Seedlings
All species: Total ... ..	11,825	5,959	5,866
Coniferous: Total ... ..	10,731	5,170	5,561
Scots Pine ... ..	2,159	791	1,368
Corsican Pine ... ..	726	583	143
Lodgepole Pine ... ..	787	510	277
European Larch ... ..	814	400	414
Japanese Larch ... ..	657	638	19
Douglas Fir ... ..	1,040	623	417
Norway Spruce ... ..	1,563	186	1,377
Sitka Spruce ... ..	865	656	209
Other conifers ... ..	2,120	783	1,337
Broadleaved: Total ... ..	1,094	789	305
Ash ... ..	43	34	9
Oak ... ..	267	94	173
Beech ... ..	727	621	106
Other broadleaved species ... ..	57	40	17

SEED IMPORTS BY THE FORESTRY COMMISSION IN THE FOREST YEAR 1960

Table 12

Species	Quantity (lb.)	Origin
All species: Total ... ..	21,581	—
Coniferous: Total ... ..	16,529	—
Corsican Pine ... ..	968	Corsica
Lodgepole Pine ... ..	447	Washington State (coastal)
Lodgepole Pine ... ..	200	Vancouver Island, B.C.
Lodgepole Pine ... ..	141	Oregon (coastal)
Lodgepole Pine ... ..	550	British Columbia (interior)
Lodgepole Pine ... ..	1	Alaska
Pinus peuce ... ..	68	Yugoslavia
Pinus radiata ... ..	24	California
Japanese Larch ... ..	700	Japan
Douglas Fir ... ..	6,000	Washington State
Norway Spruce ... ..	1,000	Austria
Sitka Spruce ... ..	4,900	Queen Charlotte Islands, B.C.
Abies nobilis ... ..	500	Oregon
Abies alba ... ..	24	France
Abies concolor ... ..	20	Colorado
Abies nordmanniana ... ..	28	Georgia, U.S.S.R.
Tsuga heterophylla ... ..	500	Queen Charlotte Islands, B.C.
Thuja plicata ... ..	350	Queen Charlotte Islands, B.C.
Sequoia sempervirens ... ..	43	California
Sequoiadendron giganteum ... ..	19	California
Other conifers ... ..	46	—
Broadleaved: Total ... ..	5,052	—
Red Oak ... ..	5,040	Holland
Other broadleaved ... ..	12	—

PLANTING IN THE FOREST YEAR 1960

Table 13

Acres

					Total	Afforested	Replanted
Great Britain	...	...	...	...	61,686	41,014	20,672
Conifer	...	...	...	...	58,849	40,662	18,187
Broadleaved	...	...	...	...	2,837	352	2,485
England	...	...	...	...	18,742	7,126	11,616
Conifer	...	...	...	...	16,220	6,870	9,350
Broadleaved	...	...	...	...	2,522	256	2,266
Scotland	...	...	...	...	29,777	23,831	5,946
Conifer	...	...	...	...	29,666	23,793	5,873
Broadleaved	...	...	...	...	111	38	73
Wales	...	...	...	...	13,167	10,057	3,110
Conifer	...	...	...	...	12,963	9,999	2,964
Broadleaved	...	...	...	...	204	58	146

PROGRESS OF PLANTING IN THE LAST TEN FOREST YEARS 1951-60

Table 14

Acres

Year	Great Britain	England	Scotland	Wales
1951	57,164	17,491	26,960	12,713
1952	61,632	18,055	30,978	12,599
1953	67,610	21,508	34,337	11,765
1954	70,437	22,994	34,344	13,099
1955	67,906	21,222	34,042	12,642
1956	62,400	20,822	29,751	11,827
1957	57,881	19,332	26,696	11,853
1958	52,398	17,175	24,863	10,360
1959	55,136	17,781	25,651	11,704
1960	61,686	18,742	29,777	13,167

SPECIES PLANTED IN THE FOREST YEAR 1960

**Table 15**

Thousand plants

	Total	Scots Pine	Corsican Pine	Lodgepole Pine	European Larch	Japanese Larch	Douglas Fir	Norway Spruce	Sitka Spruce	Oak	Beech	Other species	
												Conifer	Broad-leaved
Great Britain ...	116,643	19,455	5,903	17,098	1,777	6,550	4,975	8,884	32,766	1,110	3,762	13,548	815
England, Total	37,735	5,176	4,151	3,280	829	973	2,623	3,938	4,920	955	3,199	6,995	696
<i>Conservancy:</i>													
North West...	7,163	1,069	1,152	954	167	93	228	282	1,246	309	199	1,326	138
North East...	11,422	2,160	232	2,242	361	738	192	328	3,191	29	300	1,292	357
East ...	7,367	1,022	1,441	—	136	—	604	1,714	—	243	793	1,382	32
South East ...	4,914	352	606	16	3	6	387	572	—	65	1,035	1,810	62
South West...	4,435	130	376	68	80	74	913	933	458	161	479	727	36
New Forest...	1,525	356	309	—	—	40	136	37	25	75	247	261	39
Dean Forest	909	87	35	—	82	22	163	72	—	73	146	197	32
Scotland, Total	55,457	13,716	632	11,474	907	2,997	881	3,243	18,079	54	211	3,164	99
<i>Conservancy:</i>													
North ...	17,883	9,269	163	2,655	288	914	131	502	3,339	6	8	596	12
East ...	14,147	3,404	114	4,719	436	579	268	789	2,977	18	129	712	2
South ...	14,530	406	279	3,350	92	1,130	378	767	7,256	10	42	756	64
West ...	8,897	637	76	750	91	374	104	1,185	4,507	20	32	1,100	21
Wales, Total ...	23,451	563	1,120	2,344	41	2,580	1,471	1,703	9,767	101	352	3,389	20
<i>Conservancy:</i>													
North ...	10,810	179	676	608	40	365	432	600	6,050	67	167	1,614	12
South ...	12,641	384	444	1,736	1	2,215	1,039	1,103	3,717	34	185	1,775	8

FIRES IN FORESTS IN THE FOREST YEAR 1960

Table 16

	Great Britain	England	Scotland	Wales
Number of fires ...	4,089	2,141	1,049	899
Area burned (acres) ...	1,596	263	1,147	186
Value of damage ...	£128,058	£19,827	£94,559	£13,672

CAUSES OF FIRES IN THE FOREST YEAR 1960

Table 17

Number

	Great Britain	England	Scotland	Wales
Total ...	4,089	2,141	1,049	899
Railways ...	3,320	1,763	909	648
Adjoining land ...	302	88	59	155
Public ...	228	125	53	50
Commission employees ...	18	8	6	4
Incendiarism ...	14	12	2	—
Miscellaneous ...	55	38	11	6
Unknown ...	152	107	9	36

AREAS OF PLANTATIONS AND VOLUMES OF TIMBER THINNED  
AND FELLED IN THE FOREST YEAR 1960

**Table 18**

	Felled		Thinned		Total Volume Felled and Thinned (Million hoppus feet)
	Area (acres)	Volume (Million hoppus feet)	Area (acres)	Volume (Million hoppus feet)	
Great Britain ...	5,084	5·17	42,252	14·93	20·10
England, Total ...	3,283	2·98	19,815	6·35	9·33
<i>Conservancy:</i>					
North West ...	265	·10	5,798	1·73	1·83
North East ...	330	·15	2,881	·71	·86
East ...	599	·57	5,232	1·71	2·28
South East ...	814	·66	1,002	·38	1·04
South West ...	421	·36	1,787	·68	1·04
New Forest ...	537	·69	1,118	·64	1·33
Dean Forest ...	317	·45	1,997	·50	·95
Scotland, Total ...	994	1·32	15,197	5·71	7·03
<i>Conservancy:</i>					
North ...	592	·63	3,101	1·51	2·14
East ...	318	·56	4,191	1·39	1·95
South ...	14	·06	3,043	·99	1·05
West ...	70	·07	4,862	1·82	1·89
Wales, Total ...	807	·87	7,240	2·87	3·74
<i>Conservancy:</i>					
North ...	328	·45	4,605	1·86	2·31
South ...	479	·42	2,635	1·01	1·43

SALES OF TIMBER IN THE FOREST YEAR 1960

**Table 19**

Million hoppus feet

Description	Great Britain	England	Scotland	Wales
Trees sold standing ...	8·92	2·81	4·30	1·81
Converted* ...	8·94	5·73	2·09	1·12
Round timber and saw logs ...	1·83	1·41	·38	·04
Telegraph and other selected poles ...	·04	·04	—	—
Mining timber ...	1·55	1·07	·16	·32
Posts and stakes ...	1·73	·39	1·28	·06
Pulpwood and boardmill material ...	2·59	1·91	·17	·51
Sawn timber (roundwood equivalent) ...	·06	—	·04	·02
Firewood ...	·89	·67	·06	·16
Miscellaneous ...	·25	·24	—	·01
Poles sold in length (other than selected) ...	1·07	·43	·24	·40

\* *Note.*—In addition 0·5 million hoppus feet were converted and used internally for forest and estate purposes. (England 0·2, Scotland 0·2, Wales 0·1.)



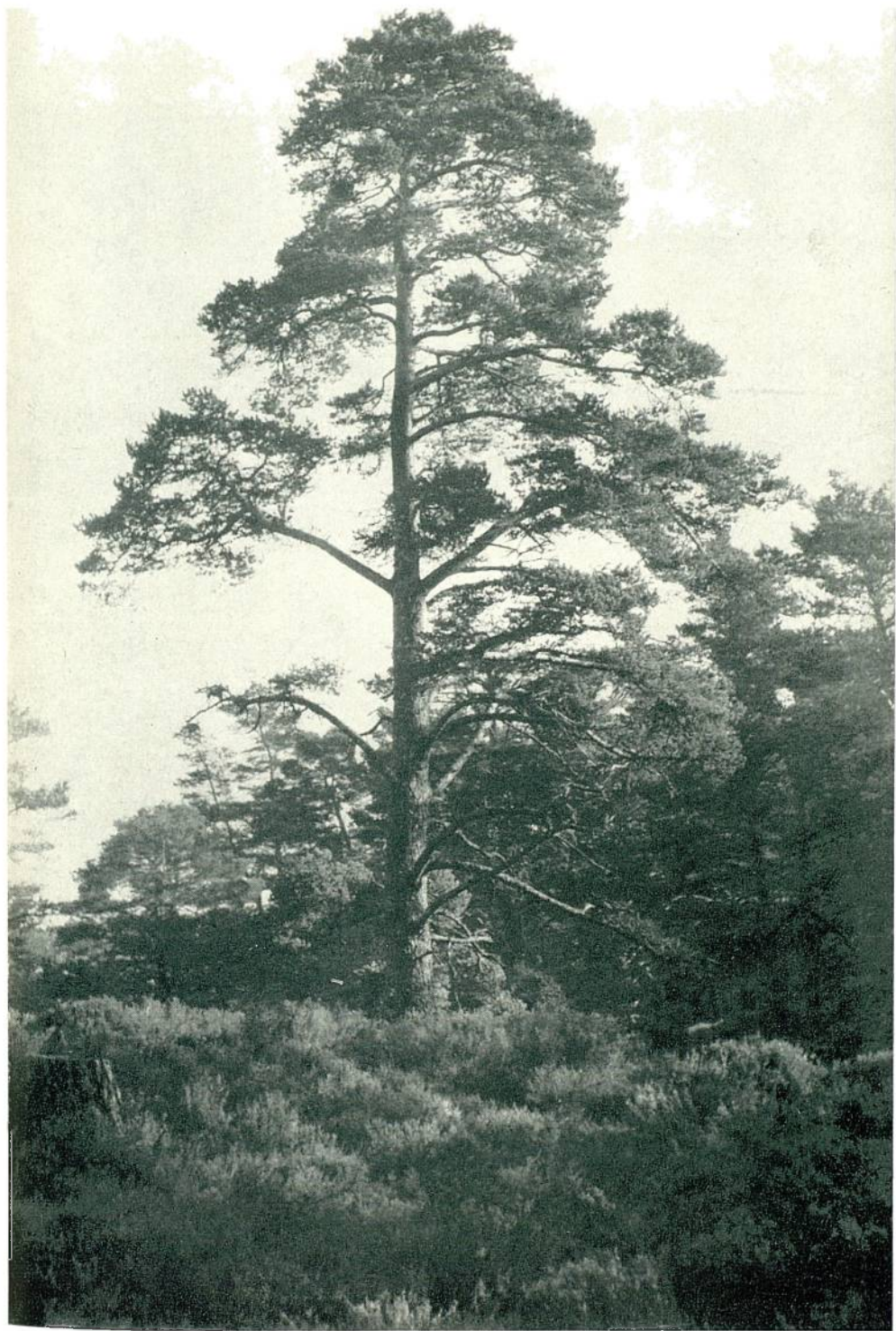


PLATE 1. Scots Pine, *Pinus sylvestris*, in a native stand in the Black Wood of Rannoch, Perthshire.

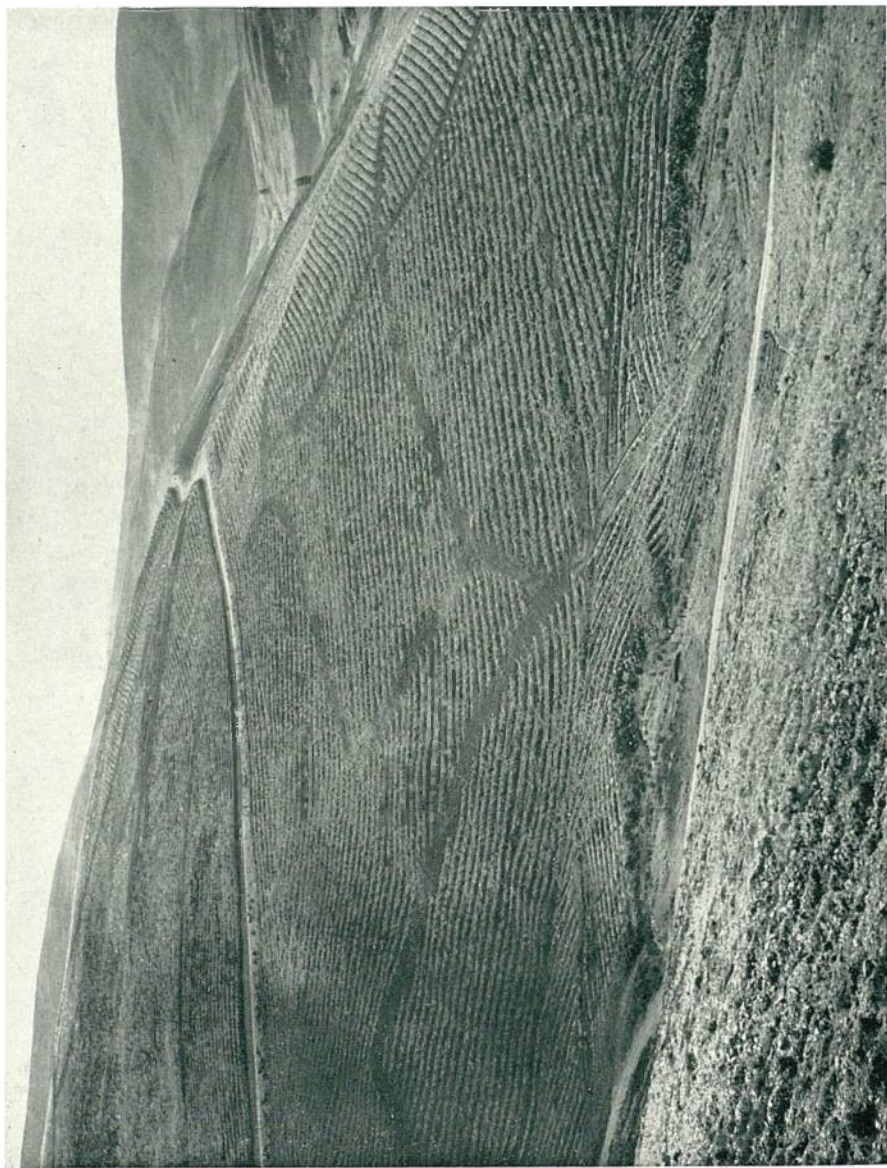


PLATE 2. Contour ploughing at Elibank and Traquair Forest, in the Scottish Borders.

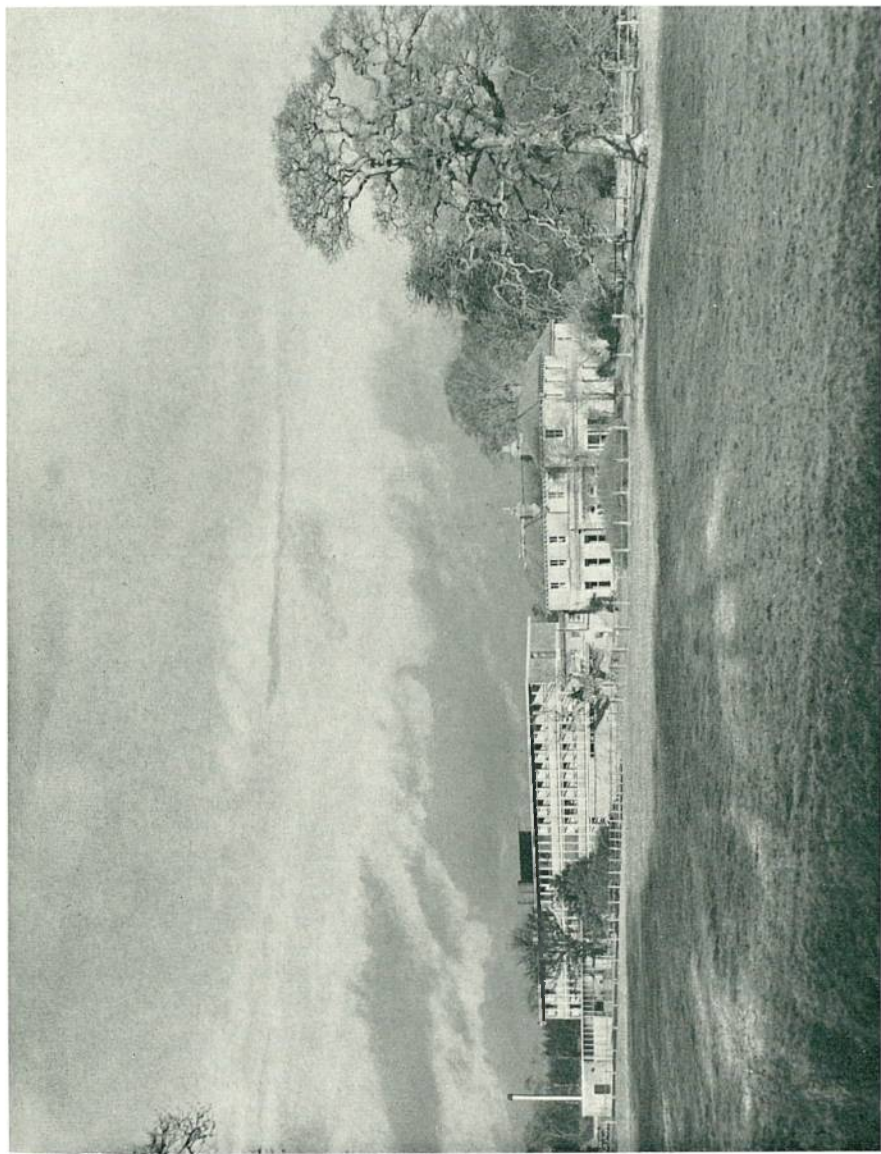


PLATE 3. Forestry Commission Research Station, Alice Holt Lodge, near Farnham, Surrey.



PLATE 4. Peeling and cross-cutting pitprops at Dalby, Allerston Forest, Yorkshire.



PLATE 5. A thriving nursery at Fleet Forest, Kirkcudbrightshire.

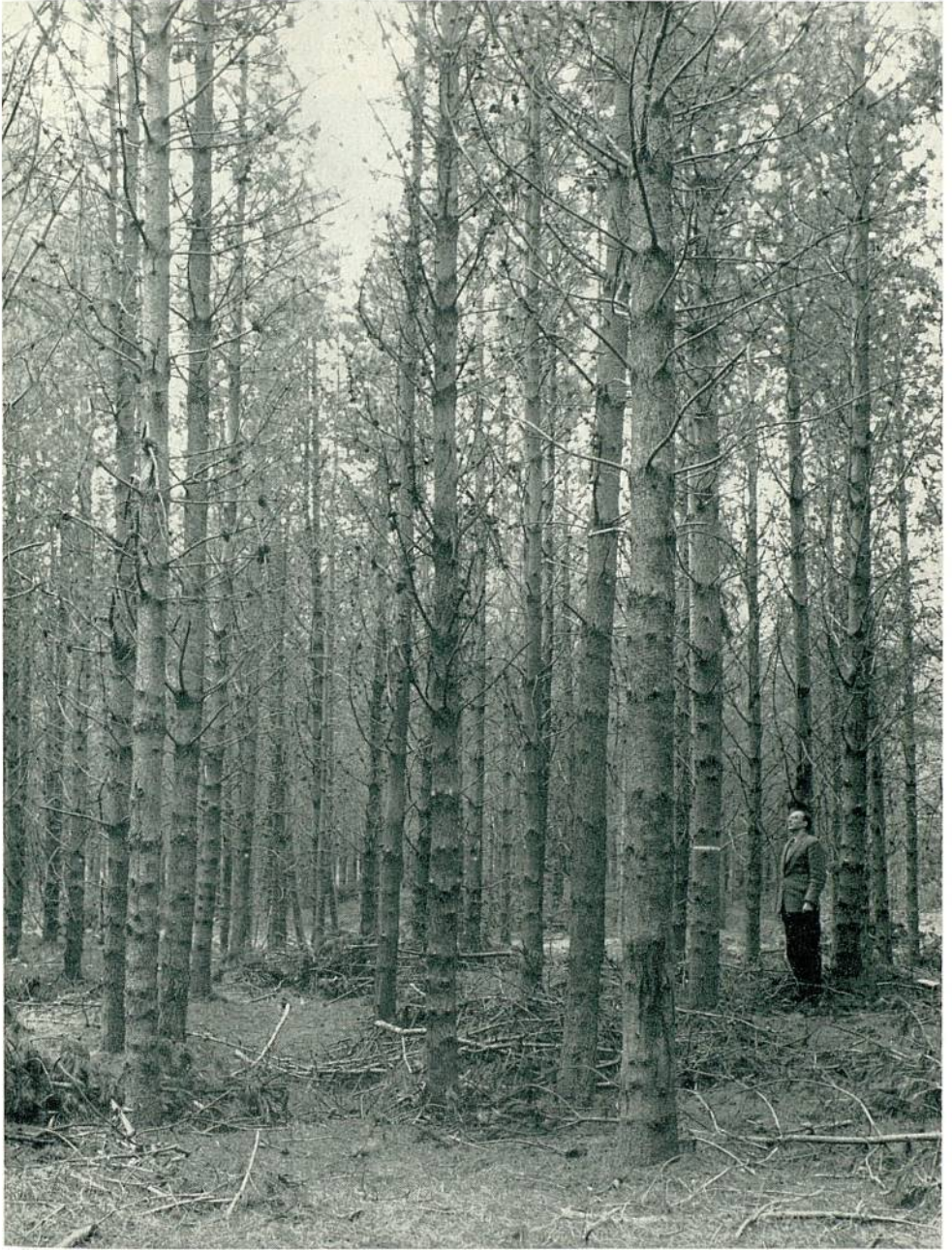


PLATE 6. Lodgepole pine, *Pinus contorta*, is a species now being widely planted: a thirty-year old stand at Culbin Forest, Moray and Nairn.

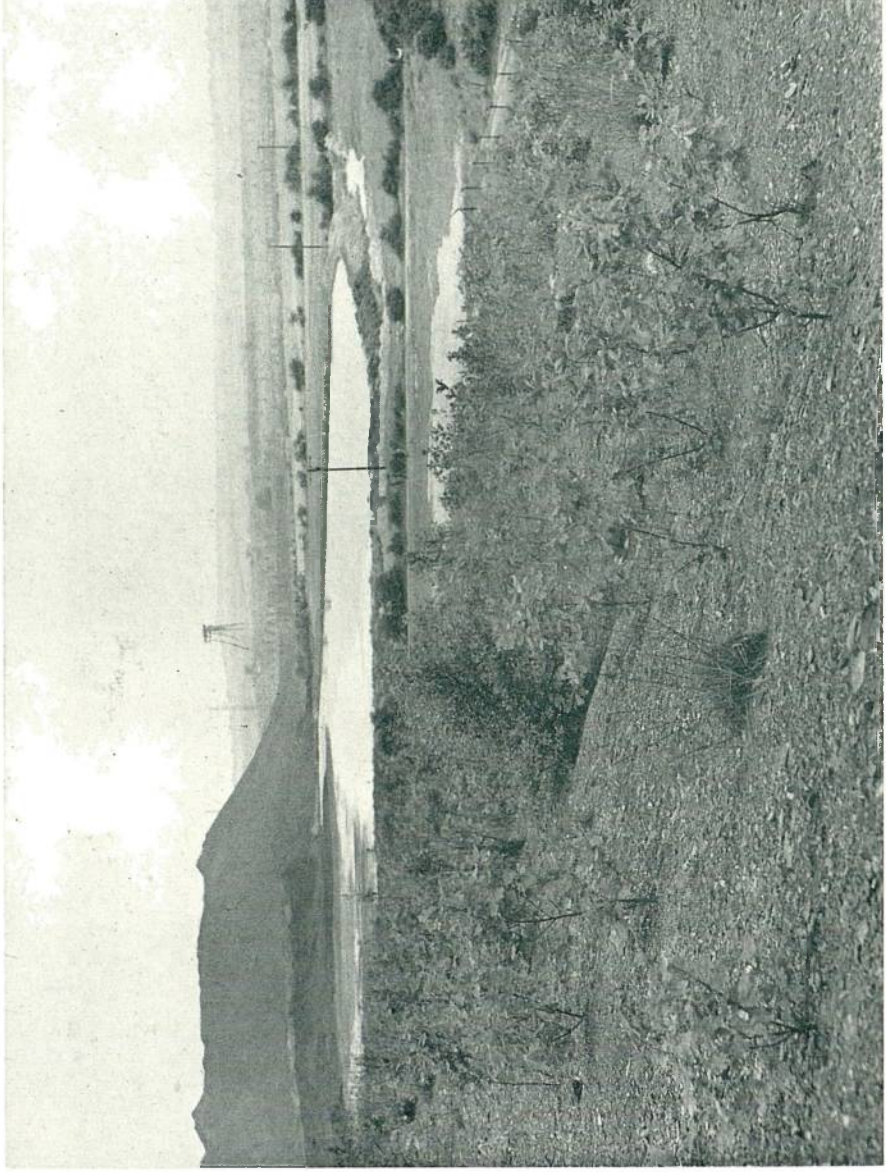


PLATE 7. Afforestation on a disused pit-heap at South Kirkby, Yorkshire. The species is Red Oak, *Quercus borealis*.



PLATE 8. Forest workers' houses at Kielder Forest Village, Northumberland.



**PLATE 9.** The David Marshall Lodge, near Aberfoyle in the Queen Elizabeth Forest Park, Perthshire.



CONSTRUCTION AND MAINTENANCE OF FOREST ROADS  
IN THE FOREST YEAR 1960

**Table 20**

Miles

	Great Britain	England	Scotland	Wales
Completed during year ... ..	402	95	197	110
Under construction at end of year ... ..	2,696	1,573	589	534
Maintained during year ... ..	6,269	2,774	2,228	1,267

PROPERTIES MANAGED BY THE COMMISSION

**Table 21**

At 30th September 1960

Number

	Great Britain	England	Scotland	Wales
Forest Properties ... ..	5,164	1,987	2,425	752
Foresters' Houses ... ..	939	425	333	181
Forest Workers' Houses ... ..	2,494	863	1,352	279
Forest Workers' Holdings ... ..	1,182	484	495	203
Miscellaneous ... ..	549	215	245	89
Other Properties ... ..	4,687	1,982	1,831	874
Farms and other agricultural subjects ... ..	2,215	786	828	601
Residential and miscellaneous ... ..	681	411	208	62
Sporting lettings ... ..	1,791	785	795	211
Easements, permissions, etc. ... ..	4,795	2,519	1,524	752

NEW HOUSES COMPLETED IN THE FOREST YEAR AND UNDER CONSTRUCTION

**Table 22**

At 30 September 1960

Number

	Great Britain	England	Scotland	Wales
Completed ... ..	23	6	11	6
Under construction ... ..	15	7	2	6

PROGRESS OF THE DEDICATION SCHEME FOR PRIVATE ESTATES  
IN THE FOREST YEAR 1960

**Table 23**

	Great Britain		England		Scotland		Wales	
	Number	Area (acres)	Number	Area (acres)	Number	Area (acres)	Number	Area (acres)
<i>Schemes completed:</i>								
Total ... ..	1,704	621,957	1,118	324,036	446	273,606	140	24,315
At end of previous year (1959) ...	1,471	575,781	962	295,294	391	257,760	118	22,727
During year (net)...	233	46,176	156	28,742	55	15,846	22	1,588
<i>Approved or in preparation at end of year</i>	257	60,969	182	35,984	32	15,701	43	9,284

PROGRESS OF THE APPROVED WOODLANDS SCHEME FOR PRIVATE ESTATES  
IN THE FOREST YEAR 1960

**Table 24**

	Great Britain		England		Scotland		Wales	
	Number	Area (acres)	Number	Area (acres)	Number	Area (acres)	Number	Area (acres)
<i>Schemes completed:</i>								
Total ... ..	546	154,263	449	108,165	78	42,126	19	3,972
At end of previous year (1959) ...	526	154,855	434	109,366	71	40,964	21	4,525
During year (net)...	20	-592	15	-1,201	7	1,162	-2	-553
<i>Approved or in preparation at end of year</i>	3	287	3	287	—	—	—	—

ESTIMATED AREA PLANTED BY PRIVATE OWNERS  
IN THE FOREST YEAR 1960

**Table 25**

Acres

	Great Britain	England	Scotland	Wales
Total ... ..	36,900	17,200	15,900	3,800
In Dedicated Woodlands ... ..	25,800	10,900	11,700	3,200
In Approved Woodlands ... ..	4,300	2,400	1,800	100
In other woodlands (estimated) ... ..	6,800	3,900	2,400	500

VOLUME OF TIMBER LICENSED FOR FELLING AND THINNING  
ON PRIVATE ESTATES IN THE FOREST YEAR 1960

**Table 26**

	Great Britain	England	Scotland	Wales
Total Volume (million hoppus feet)... ..	22.4	13.7	7.2	1.5
Conifer ... ..	9.7	3.2	5.7	.8
Broadleaved ... ..	12.7	10.5	1.5	.7
Number of licences issued ... ..	3,600	2,700	600	300

AREA LICENSED FOR CLEAR FELLING ON PRIVATE ESTATES  
IN THE FOREST YEAR 1960

**Table 27**

Acres

	Great Britain	England	Scotland	Wales
Total ... ..	13,135	9,848	2,598	689
Conditional licences ... ..	8,739	5,796	2,493	450
Unconditional licences ... ..	4,396	4,052	105	239

LAND USE AND PLANTING BY FORESTS—ENGLAND

Note:

In Tables 28–30, former Crown Woods are indicated by asterisks, \*, and new units, begun in 1960, by a dagger sign, †.

Table 28

Acres

	Land use at 30th September, 1960				Planted in forest year 1960		
	Total	Under plantations	To be planted	Agricultural and other land	Total	Afforested	Replanted
<b>NORTH WEST ENGLAND CONSERVANCY:</b>							
<b>TOTAL ... ..</b>	<b>123,402</b>	<b>82,109</b>	<b>18,634</b>	<b>22,659</b>	<b>3,038</b>	<b>1,438</b>	<b>1,600</b>
Arden, Warwick & Worcs.	1,287	493	794	—	52	—	52
Bagot, Staffs ... ..	1,395	925	466	4	65	—	65
Bawtry, Notts ... ..	586	502	24	60	14	—	14
Blengdale, Cumberland ...	1,282	1,205	13	64	27	—	27
Bowland, Lancs & Yorks...	936	734	161	41	112	92	20
Cannock, Staffs ... ..	6,720	6,115	564	41	186	—	186
Causeway Wood, Salop ...	633	365	268	—	—	—	—
Charnwood, Leicester ...	275	275	—	—	—	—	—
Corvedale, Salop ... ..	397	367	17	13	32	—	32
Cotgrave, Notts & Leicester	529	464	64	1	17	11	6
Dalton, Westmorland & Lancs ... ..	1,128	1,030	49	49	50	—	50
Delamere, Cheshire* ... ..	2,341	2,105	212	24	38	—	38
Dunsmore, Warwick ... ..	496	60	436	—	—	—	—
Ennerdale, Cumberland ...	8,383	2,736	534	5,113	27	27	—
Foremark Woods, Derby ...	571	227	344	—	52	—	52
Gisburn, Yorks ... ..	3,149	2,846	225	78	109	109	—
Greystoke, Cumberland ...	2,920	1,902	777	241	101	101	—
Grizedale, Lancs ... ..	7,364	5,794	717	853	221	66	155
Habberley, Salop ... ..	930	813	98	19	—	—	—
Hardknott, Cumberland & Lancs ... ..	8,469	1,757	642	6,070	48	33	15
Haslingden, Lancs ... ..	935	13	735	187	—	—	—
Haughmond, Salop ... ..	814	88	708	18	57	—	57
Hope, Derby ... ..	2,988	786	229	1,973	50	46	4
Inglewood, Cumberland ...	1,782	1,029	701	52	156	—	156
Kershope, Cumberland ...	11,407	9,688	81	1,638	14	11	3
Kinver, Staffs ... ..	740	714	25	1	24	24	—
Launde, Leicester & Rutland ... ..	756	171	585	—	57	9	48
Lindale, Lancs & Westmorland... ..	2,721	833	1,367	521	163	50	113
Long Mynd, Salop ... ..	926	791	76	59	15	—	15
Longtown, Cumberland ...	331	301	30	—	8	—	8
Matlock, Derby ... ..	1,628	915	703	10	137	114	23
Miterdale, Cumberland ...	1,567	728	542	297	66	66	—
Mortimer, Hereford & Salop	8,688	8,257	111	320	45	—	45
Oakamoor, Staffs... ..	1,151	652	496	3	40	15	25
Packington, Warwick & Leicester... ..	794	290	504	—	44	—	44
Sherwood, Derby, Yorks & Notts ... ..	15,302	13,330	1,527	445	268	11	257
Spadeadam, Cumberland... ..	10,287	4,100	2,968	3,219	535	535	—
Swynnerton, Staffs ... ..	2,160	2,057	86	17	34	—	34
Thornthwaite, Cumberland	6,672	4,979	482	1,211	174	118	56
Walcot, Salop ... ..	1,656	1,623	16	17	—	—	—
Walton Woods, Cumberland	306	49	257	—	—	—	—

Table 28—continued

Acres

	Land use at 30th September, 1960				Planted in forest year 1960		
	Total	Under plantations	To be planted	Agricultural and other land	Total	Afforested	Replanted
<b>NORTH EAST ENGLAND CONSERVANCY:</b>							
TOTAL ... ..	234,853	146,446	27,030	61,377	5,759	4,292	1,467
Allendale, Northumberland	369	135	230	4	66	—	66
Allerston, Yorks (1) ...	36,942	23,743	2,037	11,162	692	657	35
Chillingham, Northumberland ... ..	986	787	175	24	121	105	16
Chopwell, Durham* ... ..	2,096	1,503	488	105	33	—	33
Fountains, Yorks ... ..	1,387	645	738	4	209	60	149
Hambleton, Yorks (2) ... ..	17,242	9,226	7,294	722	1,376	1,044	332
Hamsterley, Durham ... ..	6,522	5,539	655	328	4	—	4
Harwood, Northumberland (3) ... ..	8,343	7,120	707	522	628	620	8
Jervaulx, Yorks ... ..	1,664	1,124	536	4	200	—	200
Kidland, Northumberland	3,790	2,281	1,406	103	204	204	—
Kielder, Northumberland	72,354	44,659	1,664	26,031	339	332	7
Knarsborough, Yorks (4) ... ..	1,823	954	842	27	35	9	26
Redesdale, Northumberland	17,252	11,866	299	5,087	—	—	—
Rothbury, Northumberland	4,163	3,142	646	375	127	82	45
Selby, Yorks ... ..	1,773	1,080	691	2	61	—	61
Slaley, Northumberland & Durham ... ..	2,330	1,638	622	70	95	25	70
South Pennines, Yorks (5) ... ..	3,100	191	2,746	163	16	—	16
South Yorkshire, Yorks (6) ... ..	3,676	1,813	1,795	68	121	—	121
The Stang, Yorks (7) ... ..	1,599	1,120	343	136	—	—	—
Wark, Northumberland ... ..	36,448	22,852	879	12,717	820	820	—
Weardale, Durham ... ..	4,393	748	239	3,406	255	255	—
Widehaugh, Northumberland ... ..	70	—	70	—	—	—	—
Wolds, Yorks (8) ... ..	2,178	1,472	405	301	140	79	61
Wynyard, Durham ... ..	1,821	995	814	12	34	—	34
York East, Yorks ... ..	1,662	1,271	389	2	113	—	113
York West, Yorks ... ..	870	542	326	2	70	—	70
<b>EAST ENGLAND CONSERVANCY:</b>							
TOTAL ... ..	116,005	93,370	13,903	8,732	3,195	432	2,763
Aldewood, Suffolk (9) ... ..	9,464	8,156	304	1,004	45	11	34
Ampthill, Beds ... ..	1,585	910	602	73	76	—	76
Bardney, Lincs ... ..	4,727	3,692	929	106	165	—	151
Beechwood, Beds & Herts	787	466	321	—	65	14	65
Bernwood, Oxon & Bucks	2,151	1,170	981	—	150	—	88
Bramfield, Herts & Essex ... ..	1,296	802	472	22	85	62	85
Burwell, Lincs ... ..	692	680	11	1	32	—	—
Chilterns, Bucks & Oxon ... ..	4,643	2,989	1,610	44	308	32	287
Ditton, Cambs ... ..	458	329	129	—	43	21	33

## Notes:

- (1) Allerston Forest now includes Langdale and Rosedale.  
(2) Hambleton Forest includes Ampleforth, Cleveland and Rievaulx.  
(3) Harwood Forest includes Ray.  
(4) Knarsborough Forest includes Tong Woods, Bingley and Skipton.  
(5) South Pennines Forest includes Hebden Royd and Holmfirth.  
(6) South Yorkshire Forest includes Cawthorne, Doncaster and Wharnccliffe.  
(7) The Stang Forest was formerly called Arkengarthdale.  
(8) Wolds Forest comprises Londesborough and Scardale.  
(9) Aldewood Forest comprises the former Dunwich, Rendlesham and Tunstall Forests.

Table 28—continued

	Land use at 30th September, 1960				Planted in forest year 1960		
	Total	Under plantations	To be planted	Agricultural and other land	Total	Afforested	Replanted
Hazelborough, Bucks & Northants* ...	2,321	1,932	44	345	6	10	6
Honeywood, Essex ...	1,185	395	790	—	114	—	114
Huntingdon, Hunts & Cambs ...	967	288	678	1	106	—	106
Kesteven, Lincs & Rutland ...	5,147	3,659	1,303	185	289	—	285
The King's Forest, Suffolk ...	6,000	5,404	458	138	120	4	120
Laughton, Lincs ...	2,236	2,142	44	50	50	—	—
Lavenham, Suffolk ...	889	425	464	—	110	50	98
Lynn, Norfolk (1) ...	2,858	2,057	610	191	117	12	77
Pytchley, Northants ...	495	366	129	—	41	40	41
Rockingham, Bucks & Northants ...	6,343	5,463	448	432	171	—	142
Salcey, Bucks & Northants* ...	1,496	1,308	162	26	34	29	34
Swaffham, Norfolk ...	3,810	3,286	32	492	23	—	8
Thetford Chase, Norfolk & Suffolk ...	42,816	36,426	1,276	5,114	431	118	313
Walden, Essex ...	1,304	617	661	26	101	15	101
Waveney, Suffolk & Norfolk ...	485	406	79	—	40	—	40
Wensum, Norfolk (2) ...	4,440	3,790	401	249	154	—	154
Whaddon Chase, Bucks ...	841	495	342	4	76	—	76
Wigsley, Lincs & Notts ...	1,694	1,525	130	39	70	—	70
Willingham, Lincs ...	2,932	2,557	300	75	146	8	138
Yardley Chase, Beds & Northants ...	1,943	1,635	193	115	27	6	21
<b>SOUTH EAST ENGLAND CONSERVANCY:</b>							
TOTAL ...	64,056	46,853	15,100	2,103	2,680	57	2,623
Abinger, Surrey ...	1,330	632	550	148	72	—	72
Alice Holt, Hants & Surrey* ...	2,411	1,971	168	272	57	—	57
Alton, Hants ...	1,362	1,094	155	113	79	—	79
Andover, Hants ...	1,710	1,220	343	147	62	—	62
Arundel, Sussex ...	2,552	2,310	210	32	133	—	133
Ashley Hill, Berks ...	401	319	79	3	17	11	6
Badbury, Berks ...	578	337	241	—	31	—	31
Basing, Hants ...	234	217	17	—	13	—	13
Bedgebury, Kent & Sussex* ...	2,375	2,108	57	210	99	—	99
Bere, Hants* ...	1,971	1,576	369	26	68	—	68
Bramshill, Berks & Hants ...	4,618	4,112	401	105	47	15	32
Brightling, Sussex ...	2,262	1,059	1,186	17	117	5	112
Bucklebury, Berks & Hants(3) ...	883	483	397	3	41	—	41
Challock, Kent ...	2,486	1,755	720	11	118	—	118
Chiddingfold, Surrey & Sussex ...	2,249	2,184	58	7	107	10	97
Corhampton, Hants ...	276	194	82	—	29	—	29
Effingham, Surrey ...	639	353	285	1	47	—	47
Friston, Sussex ...	1,986	1,723	238	25	—	—	—
Gravetye, Sussex, Kent & Surrey ...	1,119	421	223	475	18	—	18
Havant, Hants & Sussex ...	1,343	611	730	2	—	—	—

## Notes:

(1) Lynn Forest comprises the former Gaywood and Shouldham Forests.

(2) Wensum Forest comprises the former Hevingham, Holt, Swanton and Walsham Forests.

(3) Bucklebury Forest now includes Pen.

Table 28—continued

Acres

	Land use at 30th September, 1960				Planted in forest year 1960		
	Total	Under plantations	To be planted	Agricultural and other land	Total	Afforested	Replanted
Hemsted, Kent ...	1,024	964	27	33	32	—	32
Hursley, Hants <sup>(1)</sup> ...	4,484	2,482	1,995	7	247	—	247
Lyminge, Kent ...	2,571	2,392	169	10	122	—	122
Maresfield, Sussex ...	1,805	837	967	1	109	—	109
Micheldever, Hants ...	3,046	2,794	200	52	134	—	134
Mildmay, Kent & Surrey	1,559	511	1,038	10	112	—	112
Orlestone, Kent ...	1,240	972	266	2	43	—	43
Queen Elizabeth Forest, Hants & Sussex <sup>(2)</sup> ...	3,078	2,306	638	134	155	16	139
Rochester, Kent ...	617	158	436	23	33	—	33
Rogate, Sussex ...	891	518	355	18	59	—	59
St. Leonards, Sussex ...	1,511	722	762	27	74	—	74
Shipbourne, Kent ...	470	371	97	2	23	—	23
Slindon, Sussex <sup>(3)</sup> ...	5,021	4,063	856	102	129	—	129
Southwater, Sussex ...	623	483	137	3	35	—	35
Vinehall, Sussex ...	1,451	1,123	287	41	84	—	84
Wilmington, Sussex ...	881	762	81	38	61	—	61
Winterfold, Surrey ...	381	324	57	—	16	—	16
Witley, Surrey ...	616	392	223	1	57	—	57
Woking Office Grounds ...	2	—	—	2	—	—	—
<b>SOUTH WEST ENGLAND CONSERVANCY:</b>							
TOTAL ...	86,580	61,884	19,993	4,703	2,865	485	2,380
Bampton, Devon ...	849	301	547	1	71	—	71
Blandford, Dorset ...	2,813	1,957	643	213	120	—	120
Bodmin, Cornwall <sup>(4)</sup> ...	5,370	4,266	781	323	123	8	115
Bovey, Devon† ...	1,200	191	980	29	86	—	86
Bradon, Wilts ...	2,146	1,440	600	106	81	—	81
Brendon, Somerset* ...	3,521	2,699	475	347	61	5	56
Bristol, Somerset & Gloucester <sup>(5)</sup> ...	661	580	67	14	22	—	22
Charmouth, Dorset & Devon ...	1,184	817	324	43	44	—	44
Cotswold, Gloucester <sup>(6)</sup> ...	1,643	776	242	625	95	18	77
Cranborne Chase, Dorset & Wilts <sup>(7)</sup> ...	1,751	1,376	358	17	58	6	52
Dartmoor, Devon <sup>(8)</sup> ...	3,792	3,190	—	602	10	—	10
Dymock, Gloucester & Hereford ...	1,377	1,273	43	61	7	—	7
Eggesford, Devon ...	1,207	1,101	88	18	28	—	28
Exeter, Devon <sup>(9)</sup> ...	4,587	4,062	473	52	99	13	86
Halwill, Devon & Corn- wall <sup>(10)</sup> ...	6,705	5,121	880	704	139	73	66

*Notes.*<sup>(1)</sup> Hursley Forest includes Bishopstoke, Chilworth and Crawley.<sup>(2)</sup> Queen Elizabeth Forest includes Westbury.<sup>(3)</sup> Slindon Forest includes Marden and Charlton.

Amalgamations and adjustments during the year were:

<sup>(4)</sup> Bodmin includes Glynn and Herodsfoot.<sup>(5)</sup> Bristol comprises the former Stokeleigh Forest.<sup>(6)</sup> Cotswold Forest comprises the former Cowley Woods and Stanway.<sup>(7)</sup> Cranborne Chase comprises the former Gardiner Forest.<sup>(8)</sup> Dartmoor includes Fernworthy.<sup>(9)</sup> Exeter comprises the former Haldon Forest.<sup>(10)</sup> Halwill includes Lydford and Okehampton.

Table 28—continued

Acres

	Land use at 30th September, 1960				Planted in forest year 1960		
	Total	Under plantations	To be planted	Agricultural and other land	Total	Afforested	Replanted
Hartland, Devon & Cornwall ... ..	2,399	1,946	339	114	100	77	23
Hereford, Hereford & Gloucester <sup>(1)</sup> ... ..	3,093	1,801	1,269	23	150	15	135
Honiton, Devon ... ..	2,320	1,280	999	41	209	3	206
Land's End, Cornwall <sup>(2)</sup> ... ..	1,017	435	577	5	46	—	46
Mendip, Somerset ... ..	1,363	1,149	142	72	7	7	—
Molton Woods, Devon ... ..	1,049	388	646	15	89	86	3
Neroche, Somerset <sup>(3)</sup> ... ..	3,052	1,508	1,366	178	138	4	134
Pershore, Worcs ... ..	459	221	237	1	20	—	20
Plym, Devon <sup>(4)</sup> ... ..	2,424	1,857	560	7	140	—	140
Poorstock, Dorset & Somerset <sup>(5)</sup> ... ..	2,514	851	1,663	—	183	7	176
Quantock, Somerset ... ..	2,766	2,339	74	353	20	—	20
St. Austell, Cornwall ... ..	250	21	229	—	21	—	21
Salisbury, Hants & Wilts <sup>(6)</sup>	3,102	1,679	1,411	12	204	—	204
Savernake, Wilts & Berks <sup>(7)</sup> ... ..	6,754	5,024	1,400	330	110	—	110
Selwood, Somerset & Wilts <sup>(8)</sup> ... ..	1,448	1,190	249	9	4	—	4
Wareham, Dorset <sup>(9)</sup> ... ..	8,714	6,374	2,127	213	277	163	114
Wilsey Down, Cornwall ... ..	1,466	1,352	58	56	32	—	32
Wyre, Worcs & Salop ... ..	3,584	3,319	146	119	71	—	71
<b>NEW FOREST:</b>							
TOTAL ... ..	78,428	34,432	3,689	40,307	771	404	367
Brighstone, Isle of Wight	1,618	1,352	76	190	18	18	—
Combley, Isle of Wight ... ..	1,032	550	472	10	4	—	4
Ferndown, Dorset ... ..	2,018	1,139	366	513	28	—	28
Hurn, Hants ... ..	1,481	1,053	129	299	34	34	—
Lytchett, Dorset ... ..	240	79	150	11	15	—	15
New Forest, Hants*	65,545	24,776	2,081	38,688	455	273	182
Osborne, Isle of Wight ... ..	241	223	13	5	45	—	45
Parkhurst, Isle of Wight*	1,583	1,030	275	278	16	—	16
Ringwood, Dorset & Hants	4,062	3,801	51	210	118	79	39
Shalfleet, Isle of Wight ... ..	608	429	76	103	38	—	38
<b>DEAN FOREST:</b>							
TOTAL ... ..	27,157	22,179	1,343	3,635	434	18	416
Dean Forest, Gloucester, Hereford & Monmouth*	25,251	20,501	1,175	3,575	376	18	358
Tidenham Chase, Gloucester	1,906	1,678	168	60	58	—	58

## Notes.

- (1) Hereford includes Haugh, Aconbury and Moccas.  
(2) Land's End includes Croft Pascoe and St. Clement.  
(3) Neroche includes Sedgemoor.  
(4) Plym includes Erme.  
(5) Poorstock includes Middlemarsh Woods.  
(6) Salisbury comprises the former Bentley Forest.  
(7) Savernake includes Collingbourne and West Woods.  
(8) Selwood includes Bruton and Shepton.  
(9) Wareham includes Purbeck and Blackdown Woods.



LAND USE AND PLANTING BY FORESTS—SCOTLAND

Table 29

Acres

	Land use at 30th September, 1960				Planted in forest year 1960		
	Total	Under plantations	To be planted	Agricultural and other land	Total	Afforested	Replanted
<b>NORTH SCOTLAND CONSERVANCY:</b>							
TOTAL ...	519,306	147,184	53,569	318,553	9,663	7,133	2,530
Achnasheen, Ross ...	754	565	117	72	100	66	34
Achnashellach, Ross ...	19,674	928	424	18,322	—	—	—
Aigas, Inverness ...	2,143	796	822	525	105	101	4
Ardross, Ross ...	6,633	5,215	382	1,036	310	258	52
Assich, Nairn ...	1,326	976	165	185	50	30	20
Balblair, Sutherland & Ross	6,527	2,216	452	3,859	200	134	66
Battán, Inverness ...	2,167	1,524	331	312	—	—	—
Blaven, Skye, Inverness† ...	677	—	345	332	—	—	—
Boblainy, Inverness ...	2,690	2,504	104	82	3	—	3
Borgie, Sutherland ...	2,706	1,405	1	1,300	33	33	—
Cannacroch, Inverness ...	13,611	2,269	1,918	9,424	200	71	129
Clach Liath, Ross ...	2,197	1,592	169	436	152	119	33
Clunes, Inverness ...	7,261	2,330	349	4,582	151	105	46
Craig Phadrig, Inverness...†	211	198	3	10	2	—	2
Craigs, Ross ...	2,154	1,844	197	113	103	103	—
Creag nan Eun, Inverness	2,139	1,395	191	553	31	31	—
Culloden, Inverness ...	2,447	2,333	91	23	—	—	—
Dornoch, Sutherland ...	3,504	1,694	665	1,145	248	248	—
Dunnet, Caithness ...	863	298	498	67	10	10	—
Eilanreach, Inverness ...	922	807	30	85	—	—	—
Farigaig, Inverness ...	7,283	2,641	1,486	3,156	226	37	189
Ferness, Nairn ...	1,483	1,024	6	453	—	—	—
Findon, Ross ...	2,351	2,231	23	97	—	—	—
Fiunary, Argyll ...	18,390	5,253	1,120	12,017	300	270	30
Glen Affric, Inverness ...	53,379	5,456	3,617	44,306	450	—	450
Glen Brittle, Skye, Inverness ...	8,858	1,645	386	6,827	50	50	—
Glen Cripesdale, Argyll ...	7,290	593	1,887	4,810	105	81	24
Glen Garry, Inverness ...	23,526	5,526	793	17,207	311	183	128
Glen Hurich, Argyll ...	15,180	3,285	516	11,379	104	—	104
Glen Loy, Inverness ...	2,546	1,940	106	500	—	—	—
Glen Righ, Inverness ...	5,845	2,587	214	3,044	55	55	—
Glen Shiel, Ross ...	3,653	763	86	2,804	—	—	—
Glen Urquhart, Inverness	19,389	4,503	1,691	13,195	299	112	187
Glen Varragill, Skye, Inverness ...	8,543	659	458	7,426	152	150	2
Guisachan, Inverness ...	5,644	2,420	558	2,666	150	—	150
Healaval, Skye, Inverness	1,265	588	530	147	125	116	9
Inchnacardoch, Inverness	9,527	2,757	204	6,566	108	64	44
Inshriach, Inverness ...	11,568	4,325	2,324	4,919	603	428	175
Inverinate, Ross ...	1,234	992	30	212	—	—	—
Kessock, Ross ...	1,666	1,337	16	313	—	—	—
Kilcoy, Ross ...	3,564	3,080	47	437	53	15	38
Lael, Ross ...	3,583	2,422	202	959	103	—	103
Laiken, Nairn ...	844	832	2	10	8	8	—
Leanachan, Inverness ...	26,703	4,349	2,059	20,295	518	488	30
Millbuie, Ross ...	7,336	6,737	116	483	9	9	—
Morangie, Ross ...	8,274	5,686	1,111	1,477	366	276	90
Naver, Sutherland ...	16,944	819	4,895	11,230	455	455	—
Nevis, Inverness ...	7,659	977	542	6,140	—	—	—
North Strome, Ross ...	1,969	808	30	1,131	—	—	—
Oykell, Ross & Sutherland	4,322	2,157	1,427	738	311	180	131
Portclair, Inverness ...	5,500	2,353	—	3,147	—	—	—

Table 29—continued

Acres

	Land use at 30th September, 1960				Planted in forest year 1960		
	Total	Under plantations	To be planted	Agricultural and other land	Total	Afforested	Replanted
The Queen's Forest, Inverness ... ..	12,475	2,942	412	9,121	24	13	11
Raasay, Isle of Raasay, Inverness ... ..	749	555	29	165	14	11	3
Ratagan, Inverness & Ross	5,831	1,854	622	3,355	90	90	—
Rumster, Caithness ...	1,748	1,011	—	737	52	52	—
Salen, Mull, Argyll ...	25,130	5,797	4,336	14,997	435	433	2
Shin, Sutherland ...	45,250	4,459	4,871	35,920	633	633	—
Slattadale, Ross ...	2,106	1,072	580	454	133	102	31
South Laggan, Inverness...	4,192	1,110	260	2,822	—	—	—
South Strome, Ross ...	3,555	1,340	270	1,945	50	50	—
Strath Conon, Ross ...	3,289	2,288	440	561	102	27	75
Strath Dearn, Inverness ...	8,915	2,876	1,433	4,606	410	410	—
Strath Mashie, Inverness...	4,542	2,096	1,377	1,069	400	340	60
Strath Nairn, Inverness ...	2,613	1,315	253	1,045	101	101	—
Strathy, Sutherland ...	804	306	275	223	25	25	—
Sunart, Argyll & Inverness	2,569	1,527	626	416	131	56	75
Torrachilty, Ross ...	18,568	4,075	4,049	10,444	504	504	—
Urray, Ross ...	998	881	—	117	—	—	—
Hoy Experiments, Orkney	32	32	—	—	—	—	—
Lewis Experiments, Isle of Lewis, Ross ...	16	14	—	2	—	—	—
<b>EAST SCOTLAND CONSERVANCY:</b>							
<b>TOTAL ...</b>	<b>286,005</b>	<b>151,233</b>	<b>42,107</b>	<b>92,665</b>	<b>6,666</b>	<b>4,960</b>	<b>1,706</b>
Allan, Perth ...	9,874	2,551	1,691	5,632	249	247	2
Alltcaillach, Aberdeen ...	3,804	3,632	8	164	95	—	95
Aultmore, Banff ...	6,169	555	4,433	1,181	420	121	299
Bennachie, Aberdeen ...	6,263	3,075	800	2,388	260	244	16
The Bin, Aberdeen & Banff	8,687	6,614	1,383	690	208	74	134
Blackcraig, Perth ...	3,360	1,867	1,023	470	107	106	1
Blackhall, Kincardine ...	4,869	3,243	1,482	144	256	189	67
Blairadam, Fife & Kinross	2,543	2,061	239	243	89	81	8
Carden, Fife ...	547	535	1	11	—	—	—
Clashindarroch, Aberdeen	18,668	11,493	1,106	6,069	304	300	4
Craigvinean, Perth ...	4,285	3,520	268	497	28	—	28
Culbin, Moray & Nairn ...	7,738	7,254	12	472	14	—	14
Cushnie, Aberdeen ...	3,289	397	1,734	1,158	122	122	—
Delgaty, Aberdeen & Banff	2,496	1,714	766	16	178	131	47
Drummond Hill, Perth ...	8,174	4,419	855	2,900	114	114	—
Drumtochty, Kincardine...	9,190	5,054	1,490	2,646	336	322	14
Durris, Aberdeen & Kincardine ...	5,366	4,487	556	323	130	85	45
Edensmuir, Fife ...	1,951	1,695	109	147	36	33	3
Elchies, Moray ...	4,407	1,608	1,741	1,058	332	277	55
Faskally, Perth ...	1,061	348	588	125	49	—	49
Fetteresso, Kincardine ...	8,461	5,985	586	1,890	365	326	39
Fonab, Perth ...	2,248	1,441	265	542	100	5	95
Forest of Deer, Aberdeen	3,928	2,511	962	455	134	134	—
Glendevon, Perth & Kinross ...	997	882	72	43	19	19	—
Glendoll, Angus ...	3,713	1,087	195	2,431	103	99	4
Glenerochty, Perth ...	5,167	989	3,285	893	115	115	—
Glenisla, Angus & Perth	11,085	3,489	1,356	6,240	336	318	18
Glenlivet, Banff ...	8,692	6,605	1,161	926	373	373	—

Table 29—continued

Acres

	Land use at 30th September, 1960				Planted in forest year 1960		
	Total	Under plantations	To be planted	Agricultural and other land	Total	Afforested	Replanted
Glenprosen, Angus ...	8,326	414	1,860	6,052	118	118	—
Hallyburton, Angus & Perth ...	2,123	2,031	63	29	39	—	39
Inglismaldie, Angus & Kincardine ...	1,731	1,434	277	20	60	—	60
Keillour, Perth ...	2,043	1,741	228	74	78	35	43
Kemnay, Aberdeen ...	1,398	1,376	3	19	26	—	26
Kinfauns, Perth ...	826	826	—	—	7	—	7
Kirkhill, Aberdeen ...	2,978	2,682	152	144	74	—	74
Ledmore, Perth ...	117	—	56	61	—	—	—
Lossie, Moray ...	1,904	1,670	2	232	2	—	2
Midmar, Aberdeen ...	1,340	1,166	49	125	65	65	—
Monaghty, Moray ...	4,345	3,841	176	328	18	—	18
Montreatmont, Angus ...	2,782	2,718	22	42	18	—	18
Newton Nursery, Moray ...	175	—	95	80	—	—	—
Newtyle, Moray ...	4,009	2,748	347	914	14	14	—
Pitfichie, Aberdeen ...	7,110	5,171	76	1,863	60	—	60
Pitmedden, Fife & Perth ...	2,240	1,964	151	125	31	—	31
Rannoch, Perth ...	45,666	3,742	7,251	34,673	415	262	153
Rosarie, Banff ...	6,695	5,278	356	1,061	220	217	3
Roseisle, Moray ...	2,088	1,962	69	57	—	—	—
Scotmore, Banff & Moray ...	821	817	—	4	—	—	—
Speymouth, Moray & Banff ...	11,373	9,966	694	713	303	294	9
Strathord, Perth ...	1,622	1,500	115	7	51	—	51
Teindland, Moray ...	3,153	2,431	72	650	81	79	2
Tentsmuir, Fife ...	3,968	3,342	—	626	34	—	34
Tomashean, Aberdeen ...	8,637	2,093	1,826	4,718	80	41	39
Whitehaugh, Aberdeen ...	1,503	1,209	—	294	—	—	—
<b>SOUTH SCOTLAND CONSERVANCY:</b>							
Total ...	267,723	136,342	49,885	81,496	8,731	8,059	672
Forest of Ae, Dumfries ...	13,024	12,383	54	587	347	347	—
Arcleoch, Ayr ...	4,231	835	2,964	432	340	340	—
Auchenroddan, Dumfries ...	777	749	2	26	1	—	1
Bareagle, Wigtown ...	2,386	1,082	1,160	144	207	187	20
Brownmoor, Dumfries ...	859	641	207	11	45	45	—
Cairn Edward, Kirkcudbright ...	28,482	15,618	6,844	6,020	1,067	989	78
Cardrona, Peebles ...	1,859	1,413	—	446	—	—	—
Carrick, Ayr ...	35,075	7,990	1,330	25,755	460	460	—
Castle O'er, Dumfries & Selkirk ...	8,784	7,671	210	903	111	111	—
Changue, Ayr ...	2,884	1,766	376	742	19	—	19
Clydesdale, Lanark ...	938	453	467	18	49	—	49
Corriedoo, Kirkcudbright ...	1,045	994	1	50	—	—	—
Craik, Roxburgh & Selkirk ...	4,615	3,923	166	526	30	25	5
Dalbeattie, Kirkcudbright ...	6,239	5,356	450	433	217	185	32
Dalmacallan, Dumfries (1) ...	3,436	2,387	909	140	106	11	95
Dreva, Peebles ...	1,354	979	349	26	101	35	66
Dundeugh, Kirkcudbright ...	5,964	4,241	576	1,147	263	263	—
Duns, Berwick ...	1,205	807	397	1	80	70	10
Eddleston, Peebles ...	963	363	535	65	175	175	—
Edgarhope, Berwick & Midlothian ...	1,889	1,279	105	505	34	—	34

Note:

(1) Dalmacallan includes Clauchrie.

Table 29—continued

Acres

	Land use at 30th September, 1960				Planted in forest year 1960		
	Total	Under plantations	To be planted	Agricultural and other land	Total	Afforested	Replanted
Elibank & Traquair, Selkirk & Peebles ...	5,594	3,836	674	1,084	247	238	9
Fleet, Kirkcudbright ...	1,375	1,230	71	74	10	—	10
Garcrogo, Kirkcudbright...	1,914	1,618	—	296	—	—	—
Glengap, Kirkcudbright...	2,265	2,074	107	84	57	55	2
Glentress, Peebles...	2,355	1,959	12	384	4	—	4
Glen Trool, Kirkcudbright & Ayr ...	53,362	14,702	11,843	26,817	1,275	1,275	—
Greskine, Dumfries ...	3,407	2,755	455	197	184	168	16
Kilgrammie, Ayr ...	570	561	3	6	—	—	—
Kilstore, Wigtown ...	1,396	659	712	25	101	101	—
Kirroughtree, Kirkcudbright	10,761	6,095	2,517	2,149	417	375	42
Kyle, Ayr†... ..	2,122	—	1,923	199	—	—	—
Laurieston, Kirkcudbright	4,575	3,847	578	150	336	309	27
Mabie, Kirkcudbright & Dumfries ...	4,382	3,039	1,083	260	156	154	2
Newcastleton, Roxburgh & Dumfries ...	7,754	5,891	1,473	390	454	454	—
Penninghame, Wigtown ...	5,397	3,014	890	1,493	226	166	60
Saltoun, East Lothian & Midlothian ...	1,148	495	597	56	50	—	50
Selm Muir, Midlothian & West Lothian ...	1,682	465	1,169	48	95	82	13
Stenton, East Lothian & Berwick ...	1,318	728	525	65	58	51	7
The Garraries, Kirkcudbright ...	7,712	1,471	2,514	3,727	388	388	—
Upper Nithsdale, Ayr & Dumfries ...	3,217	311	2,602	304	206	206	—
Watermeetings, Lanark ...	3,532	911	1,135	1,486	198	198	—
Wauchope, Roxburgh ...	13,495	7,996	1,391	4,108	496	496	—
Yair Hill, Selkirk & Roxburgh ...	2,342	1,755	509	78	121	100	21
Bush Nursery, Midlothian	9	—	—	9	—	—	—
Whittingehame Seed Orchard, East Lothian...	30	—	—	30	—	—	—
<b>WEST SCOTLAND CONSERVANCY:</b>							
<b>TOTAL ...</b>	<b>322,430</b>	<b>125,704</b>	<b>34,115</b>	<b>162,611</b>	<b>4,717</b>	<b>3,679</b>	<b>1,038</b>
Achaglachgach, Argyll ...	3,901	2,435	556	910	291	184	107
Ardfin, Jura, Argyll ...	1,179	380	576	223	84	54	30
Ardgartan, Argyll... ..	20,962	6,100	697	14,165	368	353	15
Asknish, Argyll ...	5,899	3,720	1	2,178	—	—	—
Barcaldine, Argyll ...	6,064	4,272	24	1,768	26	5	21
Benmore, Argyll ...	9,300	3,131	294	5,875	31	12	19
Blackmount, Argyll ...	106	44	32	30	10	10	—
Carradale, Argyll ...	10,919	4,982	154	5,783	86	58	28
Carron Valley, Stirling ...	7,270	4,501	543	2,226	—	—	—
Corlarach, Argyll... ..	3,962	2,437	130	1,395	62	1	61
Creran, Argyll ...	2,076	395	1,178	503	64	44	20
Cumbernauld, Dunbarton & West Lothian ...	1,039	444	431	164	110	95	15
Dalmally, Argyll ...	2,805	1,106	1,513	186	42	16	26
Devilla, Fife & Clackmannan ...	3,427	2,826	440	161	124	124	—

Table 29—continued

Acres

	Land use at 30th September, 1960				Planted in forest year 1960		
	Total	Under plantations	To be planted	Agricultural and other land	Total	Afforested	Replanted
Fearnoch, Argyll ...	1,342	1,214	—	128	81	77	4
Garadhban, Stirling & Dunbarton ...	1,392	1,258	83	51	16	—	16
Garelochhead, Dunbarton	1,131	851	144	136	81	13	68
Garshelloch, Stirling ...	774	451	323	—	44	44	—
Glenbranter, Argyll ...	9,073	3,755	362	4,956	100	100	—
Glencoe, Argyll ...	380	321	45	14	4	4	—
Glendaruel, Argyll ...	6,372	2,309	60	4,003	83	83	—
Glendochart, Perth ...	5,793	20	1,073	4,700	—	—	—
Glenduror, Argyll ...	7,925	2,673	428	4,824	—	—	—
Glenfinart, Argyll...	8,712	3,196	45	5,471	—	—	—
Glenorchy, Argyll ...	1,533	467	784	282	163	163	—
Glenrickard, Arran, Bute-shire ...	11,948	1,423	5,844	4,681	359	358	1
Inverinan, Argyll ...	17,888	5,649	2,367	9,872	220	220	—
Inverliever, Argyll ...	29,060	6,779	544	21,737	91	75	16
Kilmartin, Argyll ...	2,116	1,156	904	56	286	193	93
Kilennan, Islay, Argyll† ...	1,415	15	1,145	255	—	—	—
Kilmichael, Argyll ...	10,078	5,235	24	4,819	—	—	—
Kilmory, Argyll ...	4,151	2,773	342	1,036	260	252	8
Knapdale, Argyll ...	20,997	6,856	903	13,238	102	38	64
Leapmoor, Renfrew ...	754	259	493	2	59	—	59
Lennox, Stirling & Dunbarton ...	829	720	62	47	68	—	68
Loch Ard, Perth & Stirling	33,688	19,041	2,150	12,497	371	298	73
Loch Eck, Argyll ...	5,501	2,416	26	3,059	1	1	—
Loch Etive, Argyll ...	12,258	136	4,174	7,948	60	60	—
Minard, Argyll ...	5,327	3,695	71	1,561	35	5	30
Rowardennan, Stirling ...	9,468	2,328	1,033	6,107	171	132	39
Saddell, Argyll ...	8,025	1,724	1,460	4,841	105	105	—
St. Fillans, Perth ...	3,574	1,369	1,154	1,051	127	59	68
Strathlachlan, Argyll ...	7,615	2,702	266	4,647	—	—	—
Strathyre, Perth ...	10,671	6,124	212	4,335	290	235	55
Tighnabruaich, Argyll ...	2,462	971	858	633	208	208	—
Torrie, Perth ...	1,157	1,045	68	44	34	—	34
Tulliallan Nursery, Fife ...	112	—	99	13	—	—	—

LAND USE AND PLANTING BY FORESTS—WALES

Table 30

Acres

	Land use at 30th September, 1960				Planted in forest year 1960		
	Total	Under plantations	To be planted	Agricultural and other land	Total	Afforested	Replanted
NORTH WALES							
CONSERVANCY:							
TOTAL ... ..	183,777	125,436	18,498	39,843	6,496	5,037	1,459
Aberhiraunt, Merioneth ...	6,657	3,497	125	3,035	361	360	1
Aeron, Cardigan ... ..	3,418	2,243	932	243	500	447	53
Arfon, Caernarvon ... ..	843	190	535	118	137	137	—
Bechan, Montgomery ... ..	721	651	68	2	58	—	58
Beddgelert, Caernarvon ...	3,378	2,042	241	1,095	44	—	44
Breidden, Montgomery & Salop ... ..	716	549	111	56	55	55	—
Carno, Montgomery ... ..	1,090	1,003	47	40	133	128	5
Ceiriog, Denbigh ... ..	1,644	1,310	183	151	70	7	63
Clocaenog, Denbigh & Merioneth ... ..	17,578	12,855	1,761	2,962	517	478	39
Clwyd, Denbigh & Flint ...	2,041	1,525	146	370	32	1	31
Coed Sarnau, Radnor ... ..	7,637	4,825	1,770	1,042	324	283	41
Coed y Brenin, Merioneth ...	18,913	11,996	925	5,992	367	272	95
Cynwyd, Merioneth ... ..	1,894	1,698	71	125	27	—	27
Deudraeth, Merioneth ... ..	3,086	1,253	954	879	103	49	54
Dovey, Merioneth & Montgomery ... ..	19,636	15,732	1,098	2,806	739	659	80
Dyfnant, Montgomery ... ..	7,722	4,743	420	2,559	378	341	37
Edw, Radnor ... ..	506	247	259	—	95	50	45
Elwy, Denbigh & Flint ... ..	1,584	1,328	236	20	27	—	27
Glanllyn, Merioneth ... ..	1,238	1,037	150	51	151	146	5
Goror, Denbigh & Salop ...	965	703	235	27	24	—	24
Gwydyr, Caernarvon & Denbigh ... ..	20,346	12,549	696	7,101	106	42	64
Hafren, Montgomery ... ..	10,804	8,470	176	2,158	298	244	54
Halcyn, Denbigh & Flint ...	1,037	751	238	48	7	—	7
Kerry, Montgomery, Salop & Radnor ... ..	2,859	2,693	48	118	85	33	52
Llambod, Cardigan & Carmarthen ... ..	1,784	1,540	207	37	211	211	—
Llangollen, Denbigh ... ..	1,157	957	189	11	52	—	52
Llŷn, Caernarvon ... ..	2,378	1,233	967	178	157	144	13
Maelor, Denbigh, Flint & Salop ... ..	561	315	218	28	94	56	38
Mathrafal, Montgomery & Salop ... ..	2,659	2,006	622	31	179	105	74
Môn, Anglesey ... ..	3,871	2,487	701	683	301	269	32
Myherin, Cardigan ... ..	6,140	3,533	92	2,515	59	59	—
Penllyn, Merioneth ... ..	1,023	772	58	193	—	—	—
Radnor, Radnor & Hereford ... ..	6,406	5,131	219	1,056	94	41	53
Rheidol, Cardigan ... ..	4,293	2,838	1,039	416	116	39	77
Taliesin, Cardigan & Montgomery ... ..	6,682	2,676	2,258	1,748	227	69	158
Tanat, Montgomery & Denbigh ... ..	961	789	91	81	14	11	3
Tarenig, Cardigan & Montgomery ... ..	4,518	2,917	248	1,353	295	295	—
Ystwyth, Cardigan ... ..	5,027	4,352	164	511	59	6	53
Chirk Depot, Denbigh ... ..	4	—	—	4	—	—	—

Table 30—continued

Acres

	Land use at 30th September, 1960				Planted in forest year 1960		
	Total	Under plantations	To be planted	Agricultural and other land	Total	Afforested	Replanted
<b>SOUTH WALES CONSERVANCY:</b>							
Total ... ..	165,622	110,084	37,285	18,253	6,671	5,020	1,651
Bannau, Brecon ... ..	5,197	3,469	1,018	710	297	295	2
Brechfa, Carmarthen ... ..	16,016	13,137	778	2,101	272	164	108
Brecon, Brecon ... ..	2,267	1,680	326	261	51	—	51
Caeo, Carmarthen ... ..	5,084	3,818	384	882	214	179	35
Chepstow, Monmouth ... ..	2,198	1,904	285	9	94	—	94
Cilgwyn, Carmarthen ... ..	1,284	1,206	65	13	100	—	100
Coed Caerdydd, Glamorgan ... ..	1,351	623	708	20	111	—	111
Coed Morgannwg, Glamorgan ... ..	39,568	27,715	6,926	4,927	1,397	1,354	43
Coed y Rhaiadr, Brecon ... ..	3,104	1,730	1,267	107	153	153	—
Conwil Elvet, Carmarthen ... ..	854	405	446	3	148	146	2
Crychan, Brecon & Carmarthen ... ..	9,489	8,477	341	671	23	15	8
Draethen, Glamorgan & Monmouth ... ..	1,326	641	682	3	61	—	61
Ebbw, Monmouth ... ..	8,257	5,343	2,280	634	559	365	194
Gamrhiw, Brecon ... ..	1,107	853	182	72	24	—	24
Giedd, Brecon ... ..	841	595	190	56	6	6	—
Glasfynydd, Brecon & Carmarthen ... ..	3,583	3,371	97	115	9	—	9
Gower, Glamorgan ... ..	1,122	467	648	7	30	—	30
Goytre, Monmouth ... ..	727	556	166	5	52	—	52
Gwendraeth, Carmarthen ... ..	491	245	218	28	176	176	—
Hay, Brecon, Hereford & Radnor ... ..	1,881	1,390	393	98	87	87	—
Irfon, Brecon ... ..	4,161	1,906	1,682	573	308	308	—
Llanddowror, Carmarthen ... ..	1,471	980	482	9	167	98	69
Llandeilo, Carmarthen ... ..	1,161	985	45	131	96	38	58
Llantrisant, Glamorgan ... ..	821	806	13	2	15	—	15
Monmouth, Monmouth ... ..	1,668	920	746	2	69	69	—
Mynydd Ddu, Brecon & Monmouth ... ..	3,491	2,628	406	457	70	9	61
Pembrey, Carmarthen ... ..	4,542	2,086	354	2,102	38	38	—
Penllergaer, Glamorgan ... ..	694	607	39	48	45	45	—
Preseli, Pembroke & Carmarthen ... ..	1,434	689	656	89	112	90	22
St. Gwynno, Glamorgan ... ..	6,856	4,091	1,916	849	430	397	33
Slebech, Pembroke ... ..	2,084	1,668	397	19	101	34	67
Tair Onen, Glamorgan ... ..	996	704	157	135	49	—	49
Talybont, Brecon ... ..	3,865	2,812	917	136	253	201	52
Teifi, Carmarthen & Cardigan ... ..	1,144	956	186	2	95	3	92
Tintern, Monmouth ... ..	5,231	4,763	285	183	121	—	121
Towy, Cardigan, Brecon & Carmarthen ... ..	16,518	3,219	10,559	2,740	709	708	1
Tyddewi, Pembroke ... ..	1,082	608	449	25	42	42	—
Wentwood, Monmouth ... ..	2,656	2,031	596	29	87	—	87

**Table 31**  
**ENGLAND**

**Main statistics for the year ended 30th September, 1960**

<b>FORESTRY COMMISSION</b>		
<b>LAND USE AT THE END OF THE YEAR</b>		
		<i>Acres</i>
Total area		730,481
Forest land: Total		586,965
Acquired plantations ... ..		52,009
Planted by Forestry Commission		435,264
To be planted ... ..		98,836
Nurseries ... ..		856
Other land: Total		143,516
Agricultural and grazing ...		62,208
Forest Workers' Holdings		6,128
Unplantable and miscellaneous		75,180
<b>FOREST LAND ACQUIRED IN THE YEAR</b>		
		<i>Acres</i>
Total area ...		19,983
Standing woods ... ..		1,211
Bare land for afforestation ...		7,511
Former woodland for replanting		11,261
<b>PLANTING IN THE YEAR</b>		
		<i>Acres</i>
Total area		18,742
Afforested ...		7,126
Replanted ...		11,616
<b>AREAS OF PLANTATIONS AND VOLUMES OF TIMBER THINNED AND FELLED IN THE YEAR</b>		
	<i>Area (acres)</i>	<i>Volume (thousands hoppus feet)</i>
Total...	—	9,327
Felled ...	3,283	2,977
Thinned	19,815	6,350
<b>CONSTRUCTION AND MAINTENANCE OF ROADS</b>		
		<i>Miles</i>
Total completed during year ...		95
Under construction at end of year		1,573
Maintained during year... ..		2,774
<b>EMPLOYMENT</b>		
Number of forest workers employed at end of year: 4,968 (including 184 part-time workers).		



Table 31—continued

## ENGLAND

Main statistics for the year ended 30th September, 1960

PRIVATE FORESTRY		
PROGRESS OF THE DEDICATION SCHEME		
	<i>Number</i>	<i>Area (acres)</i>
Total schemes completed to date... ..	1,118	324,036
Schemes completed during year (net) ... ..	156	28,742
Schemes approved or in preparation at end of year ... ..	182	35,984
PROGRESS OF THE APPROVED WOODLANDS SCHEME		
	<i>Number</i>	<i>Area (acres)</i>
Total schemes completed to date ... ..	449	108,165
Schemes completed during year (net) ... ..	15	-1,201
Schemes approved or in preparation at end of year ... ..	3	287
ESTIMATED AREA PLANTED BY PRIVATE OWNERS IN THE YEAR		
		<i>Acres</i>
Total area		17,200
In Dedicated Woodlands ... ..		10,900
In Approved Woodlands ... ..		2,400
In other woodlands (estimated) ... ..		3,900

**Table 32**  
**SCOTLAND**  
**Main statistics for the year ended 30th September, 1960**

<b>FORESTRY COMMISSION</b>		
<b>LAND USE AT THE END OF THE YEAR</b>		
		<i>Acres</i>
Total area		1,395,464
Forest land: Total		740,139
Acquired plantations ... ..		25,159
Planted by Forestry Commission...		535,304
To be planted ... ..		178,827
Nurseries ... ..		849
Other land: Total		655,325
Agricultural and grazing ... ..		398,592
Forest Workers' Holdings ... ..		5,592
Unplantable and miscellaneous ...		251,141
<b>FOREST LAND ACQUIRED IN THE YEAR</b>		
		<i>Acres</i>
Total area		32,599
Standing woods ... ..		477
Bare land for afforestation ... ..		28,216
Former woodland for replanting		3,906
<b>PLANTING IN THE YEAR</b>		
		<i>Acres</i>
Total area		29,777
Afforested ... ..		23,831
Replanted ... ..		5,946
<b>AREAS OF PLANTATIONS AND VOLUMES OF TIMBER THINNED AND FELLED IN THE YEAR</b>		
	<i>Area (acres)</i>	<i>Volume (thousands hoppus feet)</i>
Total...	—	7,032
Felled ... ..	994	1,319
Thinned	15,197	5,713
<b>CONSTRUCTION AND MAINTENANCE OF ROADS</b>		
		<i>Miles</i>
Total completed during year ...		197
Under construction at end of year		589
Maintained during year ...		2,228
<b>EMPLOYMENT</b>		
Number of forest workers employed at end of year: 4,105 (including 62 part-time workers).		

Table 32—continued

## SCOTLAND

Main statistics for the year ended 30th September, 1960

## PRIVATE FORESTRY

## PROGRESS OF THE DEDICATION SCHEME

	<i>Number</i>	<i>Area (acres)</i>
Total schemes completed to date... ..	446	273,606
Schemes completed during year (net) ... ..	55	15,846
Schemes approved or in preparation at end of year ... ..	32	15,701

## PROGRESS OF THE APPROVED WOODLANDS SCHEME

	<i>Number</i>	<i>Area (acres)</i>
Total schemes completed to date... ..	78	42,126
Schemes completed during year (net) ... ..	7	1,162
Schemes approved or in preparation at end of year ... ..	—	—

## ESTIMATED AREA PLANTED BY PRIVATE OWNERS IN THE YEAR

	<i>Acres</i>
Total area ... ..	15,900
In Dedicated Woodlands ... ..	11,700
In Approved Woodlands ... ..	1,800
In other woodlands (estimated) ... ..	2,400

Table 33

## WALES

Main statistics for the year ended 30th September, 1960

## FORESTRY COMMISSION

## LAND USE AT THE END OF THE YEAR

	<i>Acres</i>
Total area ...	349,399
Forest land: total	291,303
Acquired plantations ... ..	6,038
Planted by Forestry Commission	229,482
To be planted ... ..	55,333
Nurseries ... ..	450
Other land: total ...	58,096
Agricultural and grazing ... ..	44,652
Forest Workers' Holdings ...	3,001
Unplantable and miscellaneous ...	10,443

## FOREST LAND ACQUIRED IN THE YEAR

	<i>Acres</i>
Total area	6,662
Standing woods ... ..	12
Bare land for afforestation ...	4,975
Former woodland for replanting...	1,675

## PLANTING IN THE YEAR

	<i>Acres</i>
Total area	13,167
Afforested ...	10,075
Replanted ...	3,110

AREAS OF PLANTATIONS AND VOLUMES OF TIMBER THINNED  
AND FELLED IN THE YEAR

	<i>Area (acres)</i>	<i>Volume (thousand hoppus feet)</i>
Total...	—	3,740
Felled ...	807	871
Thinned	7,240	2,869

## CONSTRUCTION AND MAINTENANCE OF ROADS

	<i>Miles</i>
Total completed during year ...	110
Under construction at end of year ...	534
Maintained during year ...	1,267

## EMPLOYMENT

Number of forest workers employed at end of year: 2,959 (including 36 part-time workers).

Table 33—*continued*

WALES

Main statistics for the year ended 30th September, 1960

PRIVATE FORESTRY

PROGRESS OF THE DEDICATION SCHEME

	<i>Number</i>	<i>Area (acres)</i>
Total schemes completed to date... ..	140	24,315
Schemes completed during year (net) ... ..	22	1,588
Schemes approved or in preparation at end of year ... ..	43	9,284

PROGRESS OF THE APPROVED WOODLANDS SCHEME

	<i>Number</i>	<i>Area (acres)</i>
Total schemes completed to date... ..	19	3,972
Schemes completed during year (net) ... ..	-2	-553
Schemes approved or in preparation at end of year ... ..	—	—

ESTIMATED AREA PLANTED BY PRIVATE OWNERS IN THE YEAR

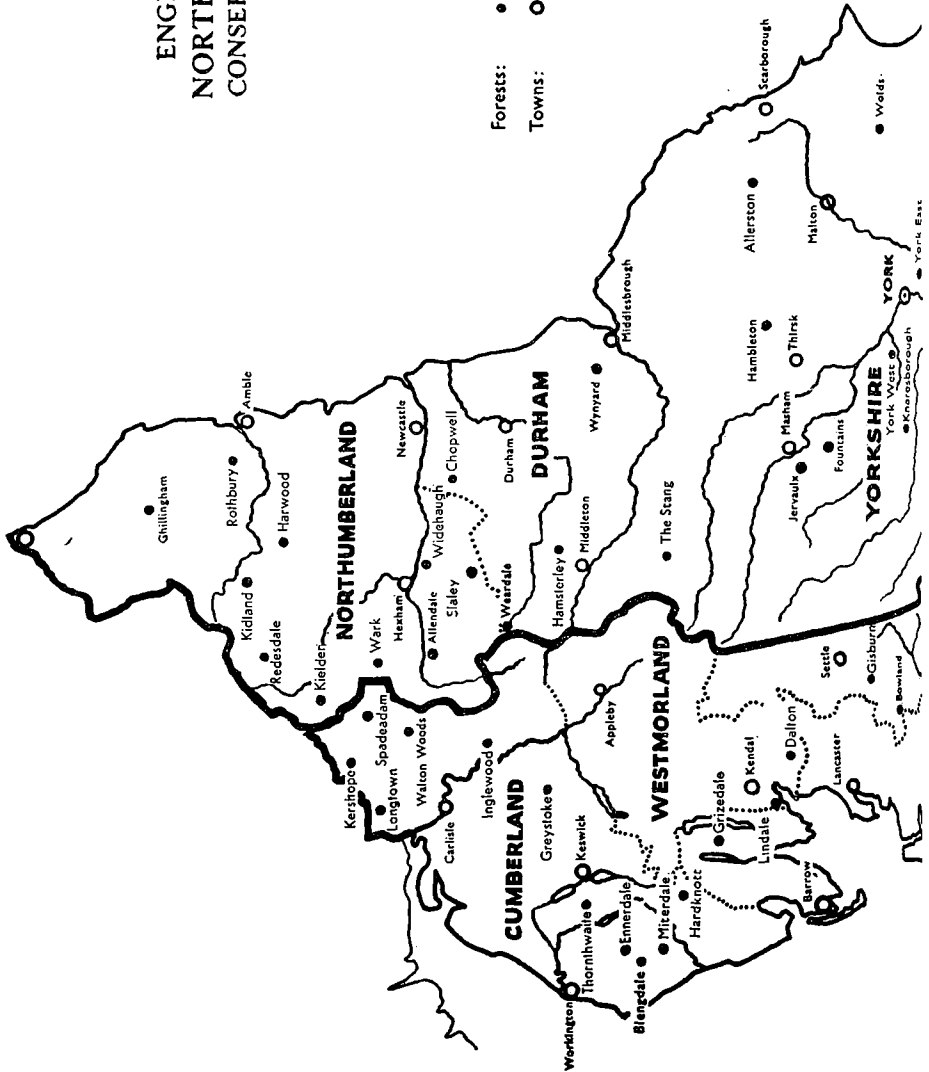
	<i>Acres</i>
Total Area	3,800
In Dedicated Woodlands ... ..	3,200
In Approved Woodlands ... ..	100
In other woodlands (estimated) ... ..	500

APPENDIX II

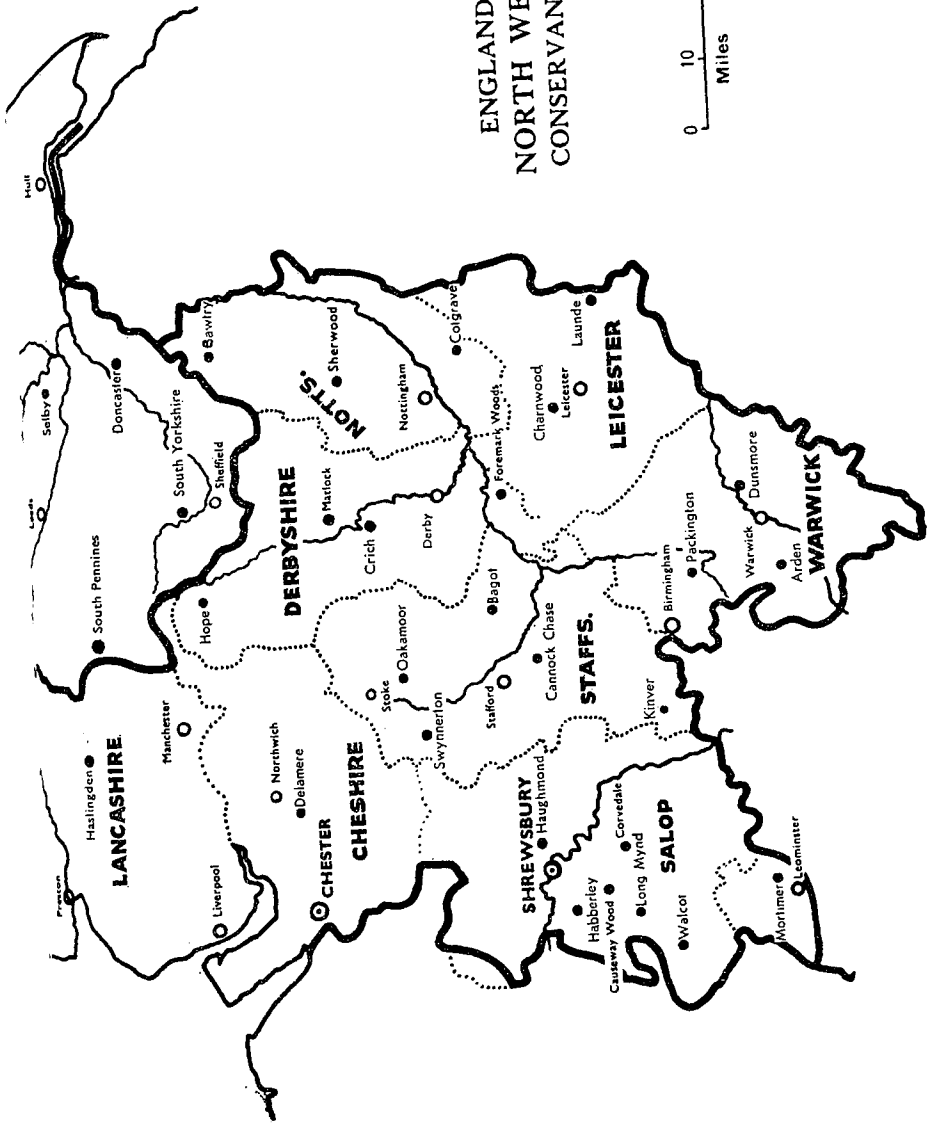
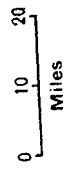
MAPS

Maps showing the distribution of Commission  
forests, and the boundaries of the Conservancies, as  
at 30th September, 1960, follow overleaf.

# ENGLAND NORTH EAST CONSERVANCY

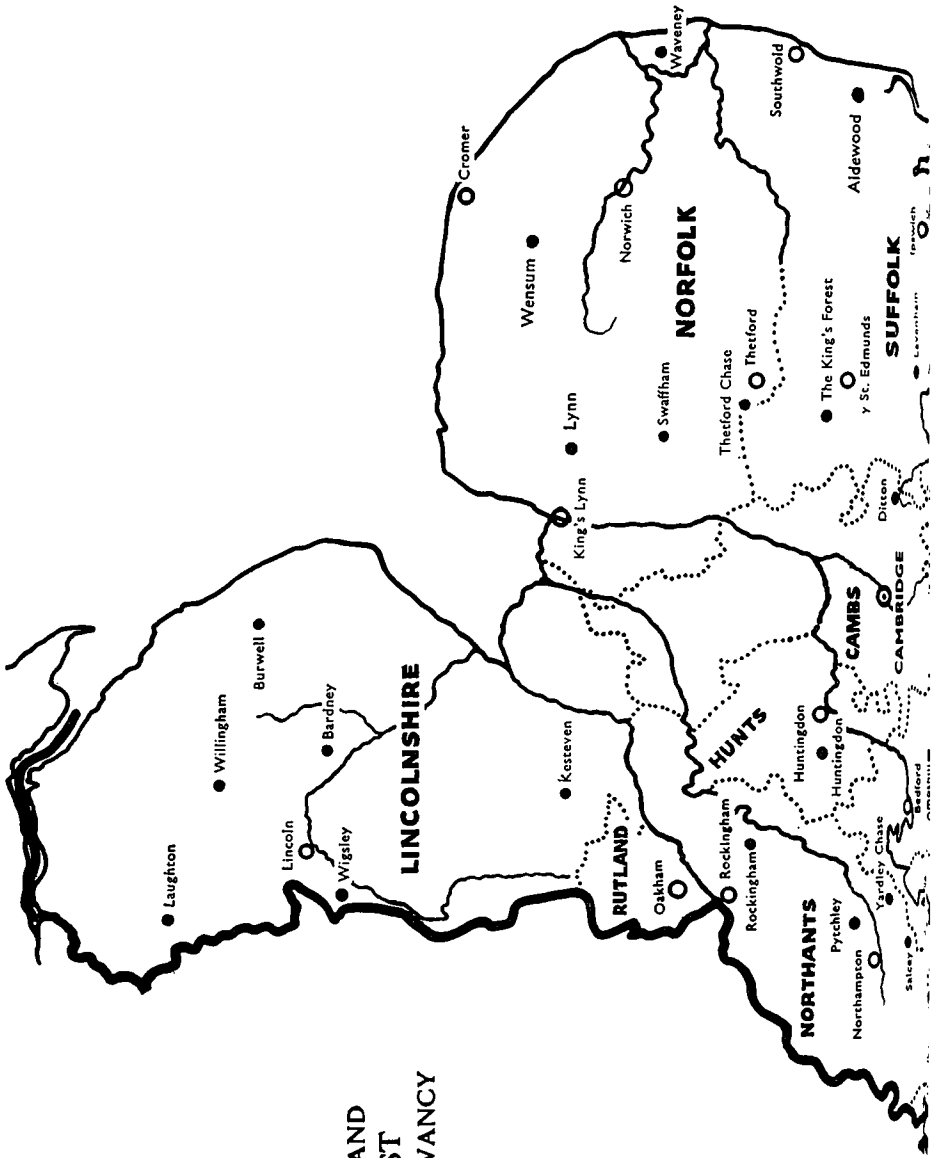


# ENGLAND NORTH WEST CONSERVANCY

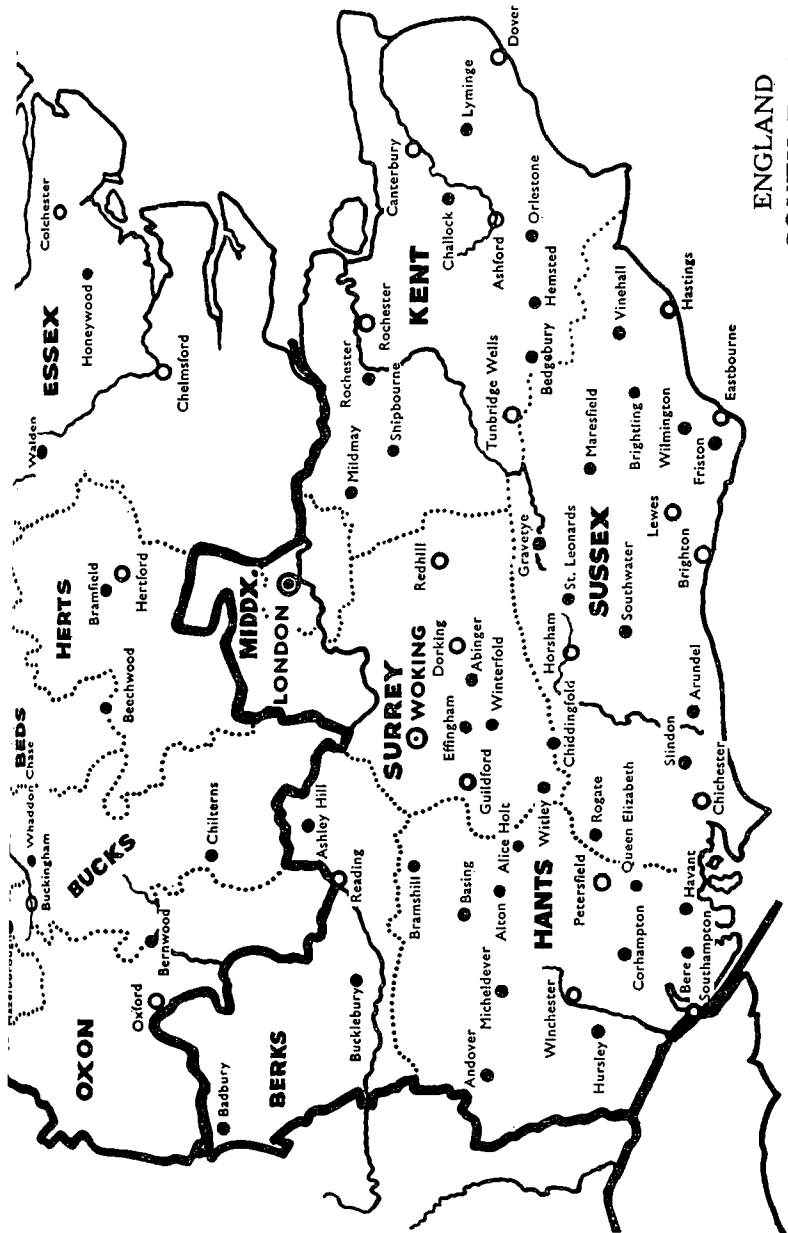


# ENGLAND EAST CONSERVANCY

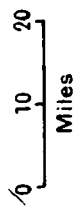
- Forests: ●
- Towns: ○



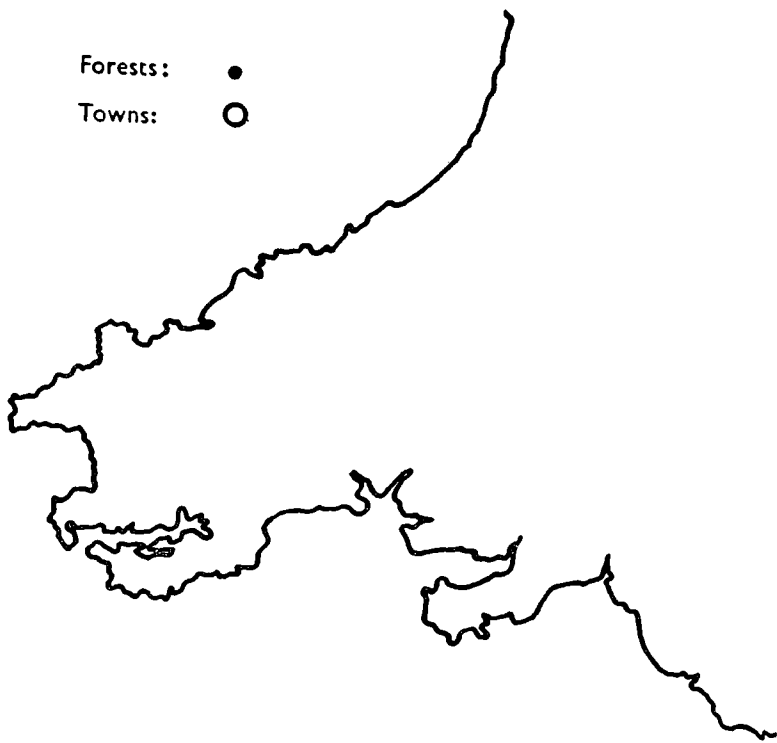




ENGLAND  
SOUTH EAST  
CONSERVANCY

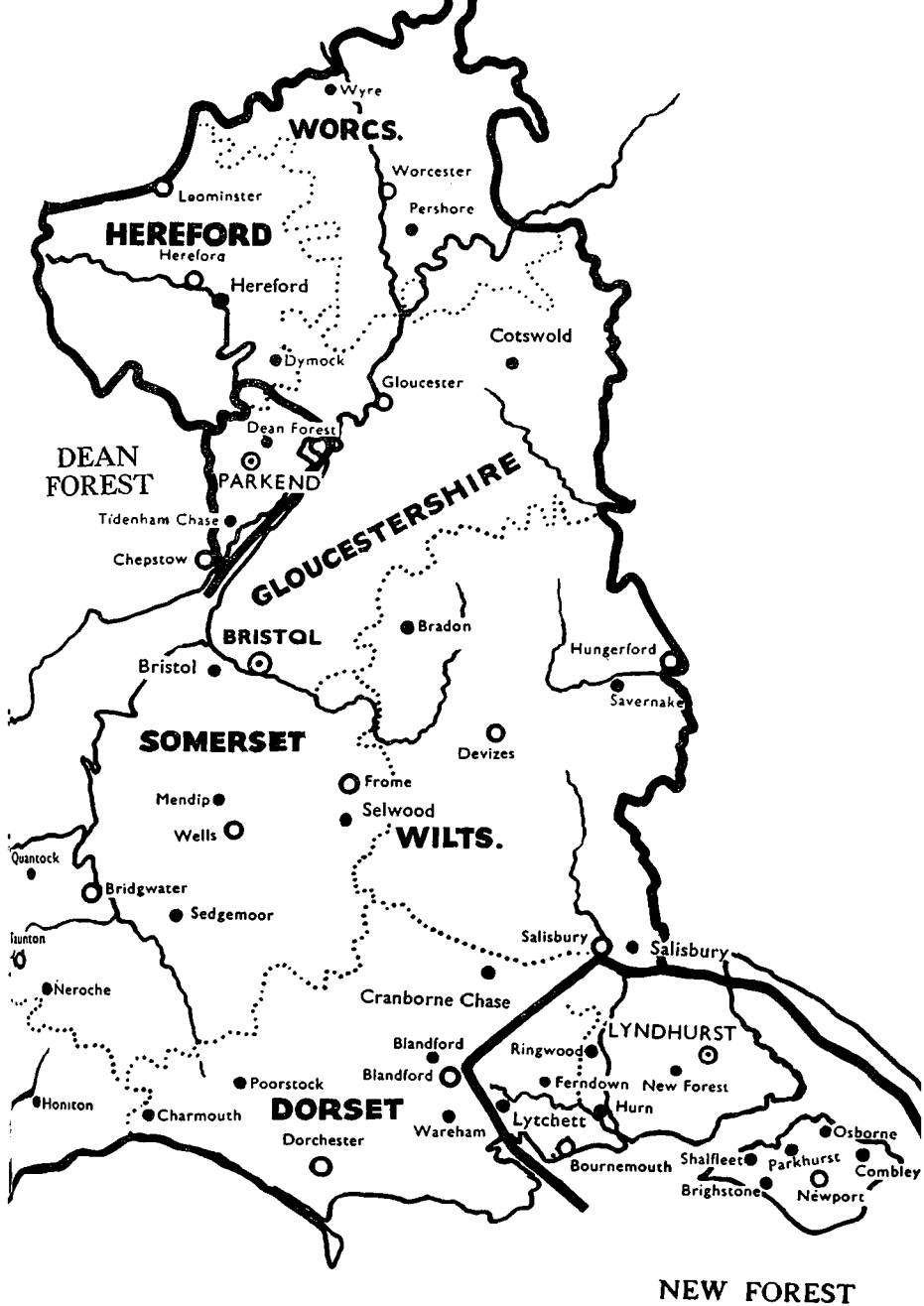


Forests: ●  
Towns: ○



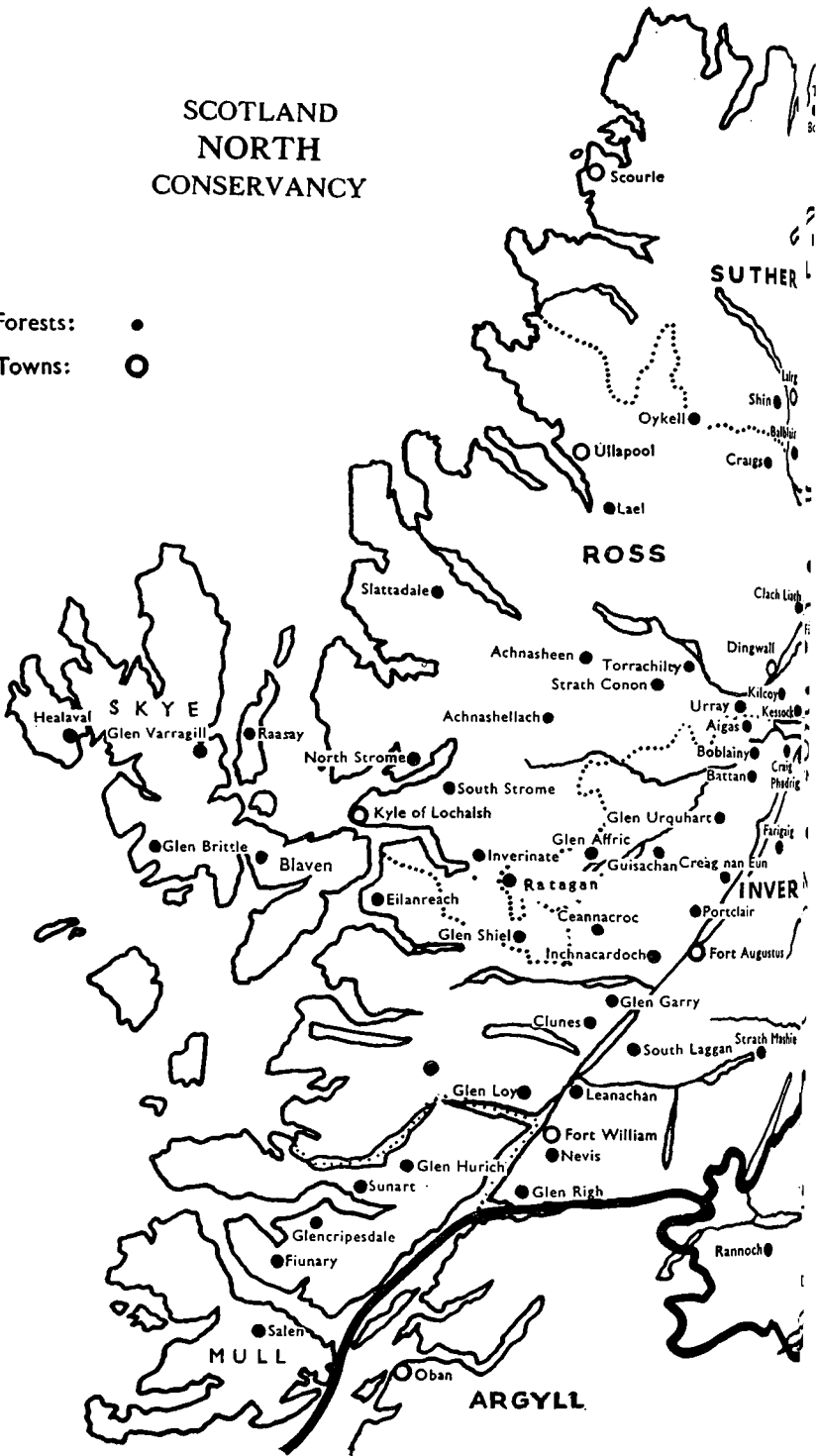
ENGLAND  
SOUTH WEST  
CONSERVANCY





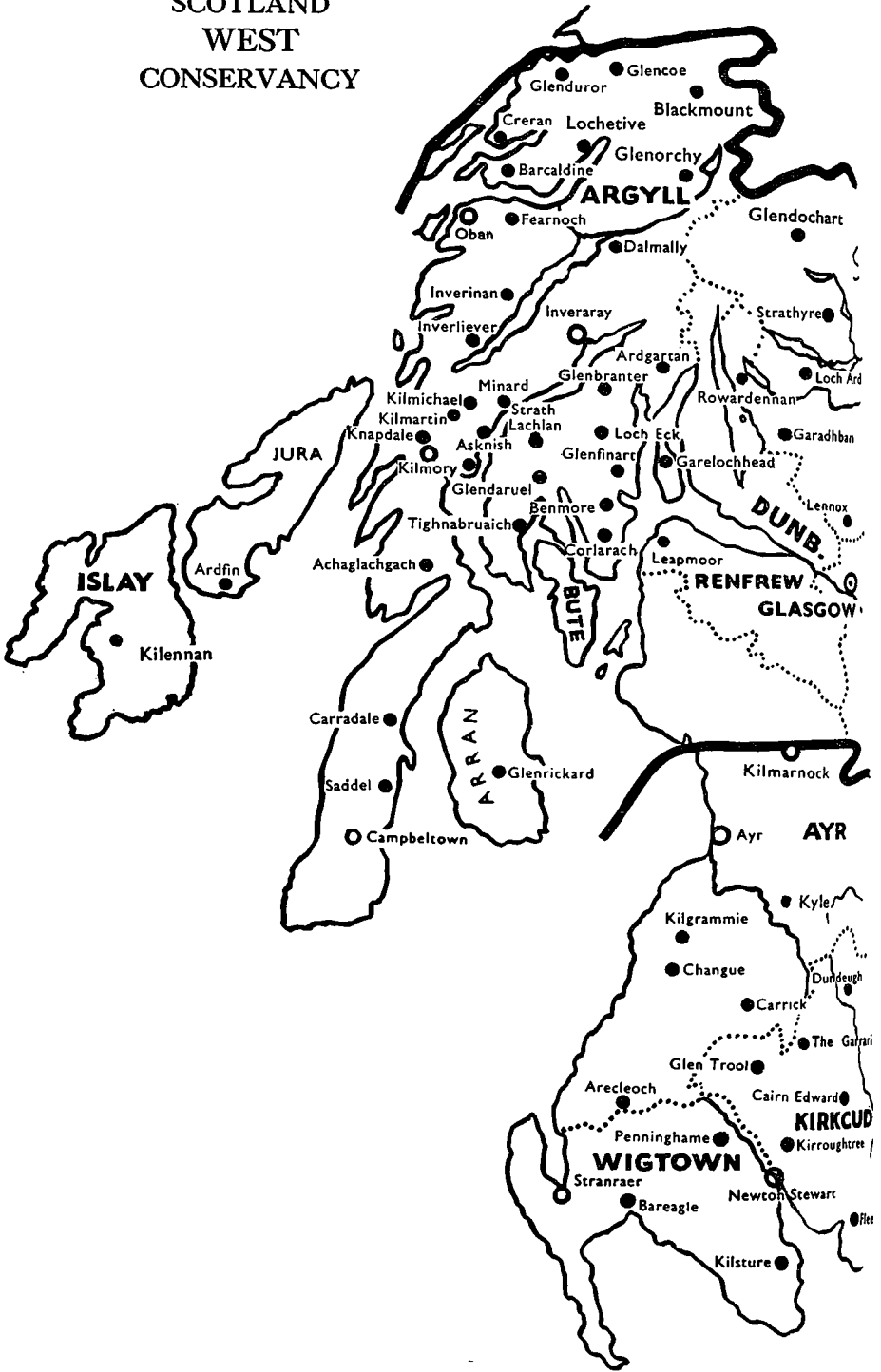
SCOTLAND  
NORTH  
CONSERVANCY

- Forests: ●  
Towns: ○



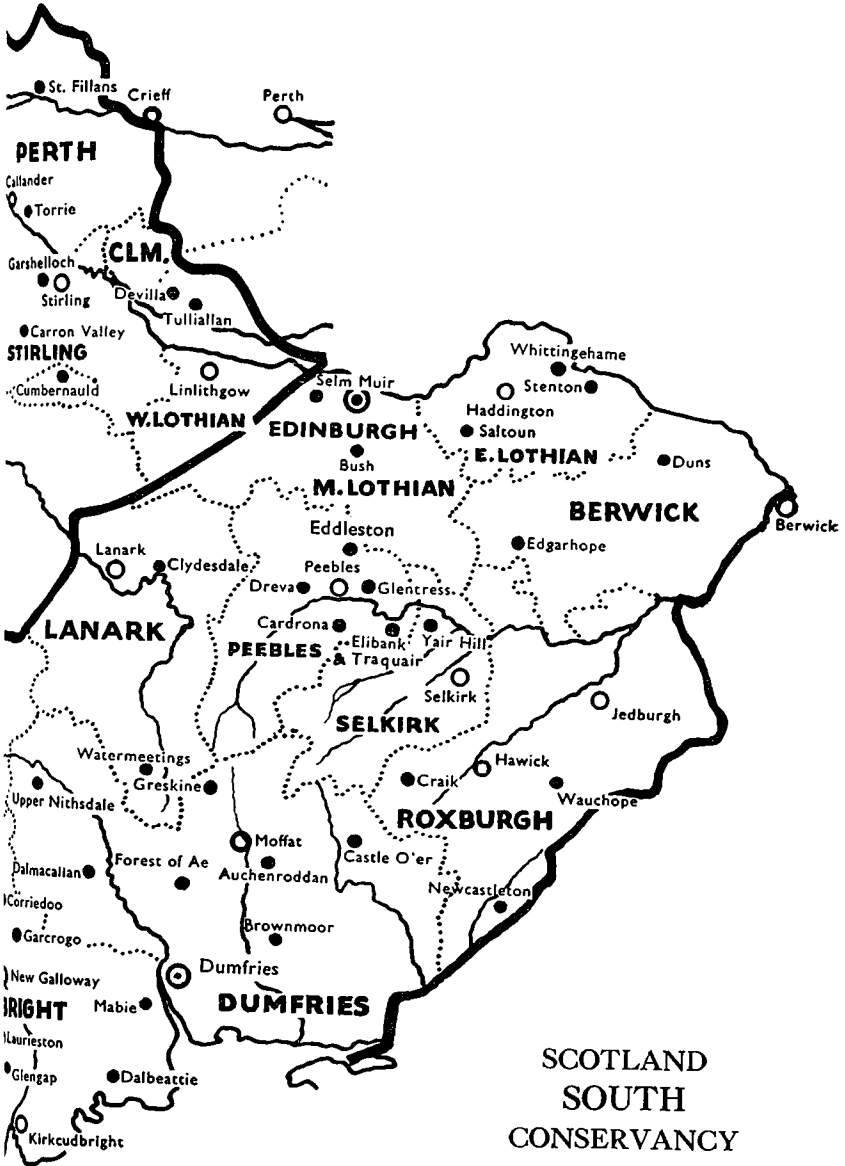


SCOTLAND  
WEST  
CONSERVANCY



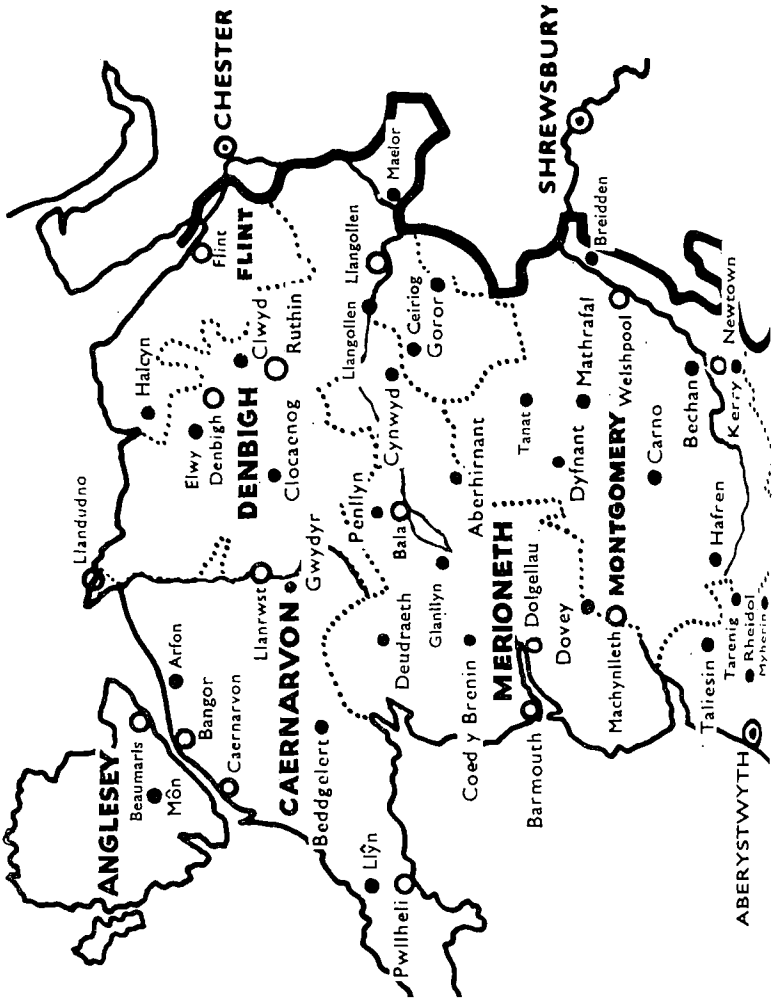
Forests: ●

Towns: ○

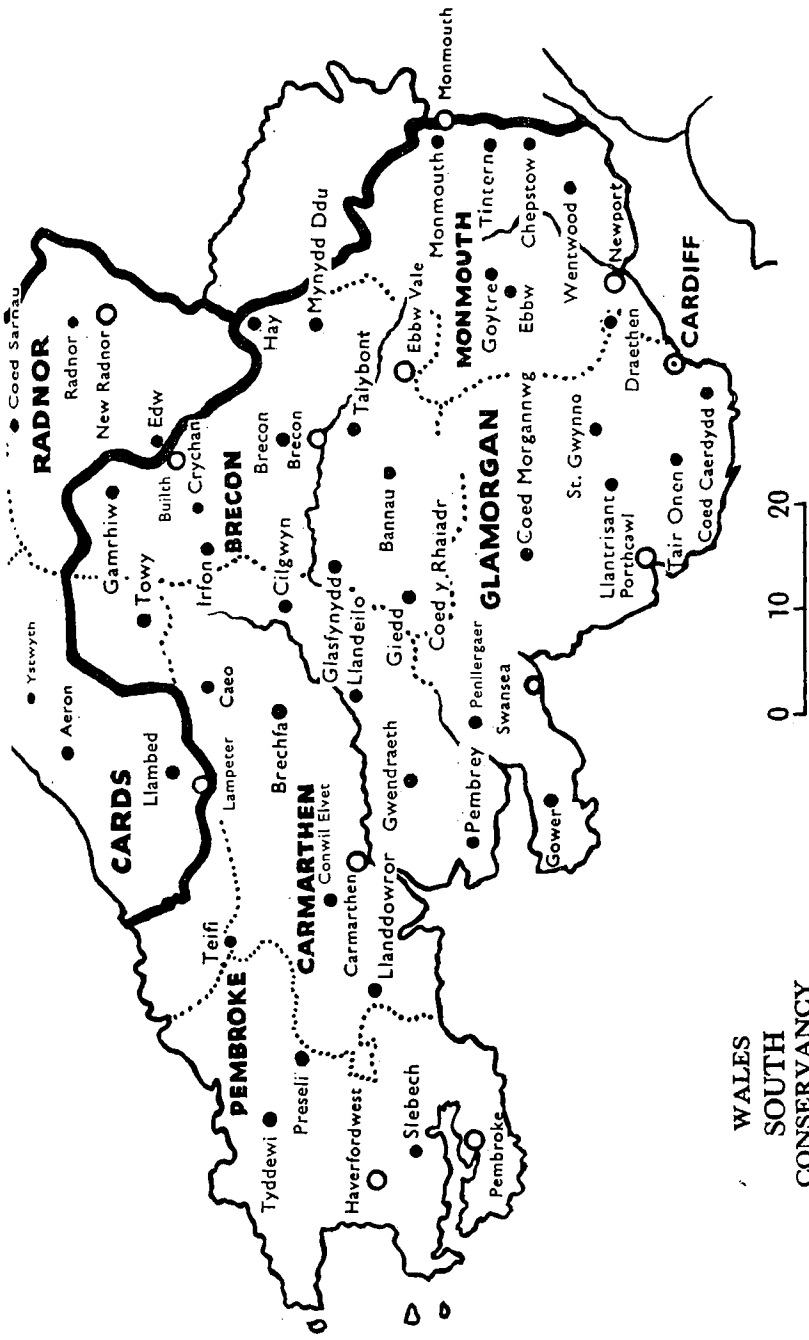


SCOTLAND  
SOUTH  
CONSERVANCY

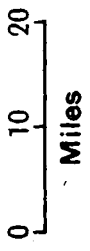
0 10 20  
Miles







WALES  
SOUTH  
CONSERVANCY



**ADDRESSES OF THE MAIN OFFICES OF THE  
FORESTRY COMMISSION**

Headquarters of the Forestry Commission:

25, Savile Row, London, W.1. (*Regent* 0221.)

Director of Forestry for England:

1, Princes Gate, London, S.W.7. (*Kensington* 9691.)

Director of Forestry for Scotland:

25, Drumsheugh Gardens, Edinburgh, 3. (*Edinburgh Caledonian* 4782.)

Director of Forestry for Wales:

Victoria House, Victoria Terrace, Aberystwyth. (*Aberystwyth* 367.)

**Conservancy Offices**

England:

North-West: Upton Grange, Upton Heath, Chester. (*Chester* 24006.)

North-East: Briar House, Fulford Road, York. (*York* 24684.)

East: Brooklands Avenue, Cambridge. (*Cambridge* 54495.)

South-East: Danesfield, Grange Road, Woking. (*Woking* 2270.)

South-West; Flowers Hill, Brislington, Bristol, 4. (*Bristol* 78041.)

New Forest: The Queen's House, Lyndhurst, Hants. (*Lyndhurst* 300.)

Dean Forest: Whitmead Park, Parkend, Lydney, Glos. (*Whitecroft* 305.)

Scotland:

North: 60, Church Street, Inverness. (*Inverness* 608.)

East: 6, Queen's Gate, Aberdeen. (*Aberdeen* 33361.)

South: Greystone Park, Moffat Road, Dumfries. (*Dumfries* 2425.)

West: 20, Renfrew Street, Glasgow, C.2. (*Glasgow Douglas* 7261.)

Wales:

North: 15, Belmont, Shrewsbury. (*Shrewsbury* 4071.)

South: St. Agnes Road, Gabalfa, Cardiff. (*Cardiff* 62131.)

**Research Station**

Alice Holt Lodge, Wrecclesham, Farnham, Surrey. (*Bentley* 2255.)

**Education Branch**

Chief Education Officer:

25, Savile Row, London, W.1. (*Regent* 0221.)