

FORESTRY COMMISSION

Forty-Third
Annual Report of the
Forestry Commissioners
for the year ended
30th September 1962

*Presented pursuant to Section 7 (3) of the Forestry
Act, 1945 (8 & 9 Geo. VI Ch. 35)*

*Ordered by The House of Commons to be printed
28th March 1963*

LONDON

HER MAJESTY'S STATIONERY OFFICE

PRICE 6s. 6d. NET



THE FORESTRY COMMISSIONERS

at 30th September, 1962

The Earl of Radnor, K.G., K.C.V.O. *Chairman.*

Major D. C. Bowser, O.B.E., J.P.

Lt.-Col. Sir Richard Cotterell, Bt., J.P.

Mr. E. Gwynfryn Davies, J.P.

Mr. Edward Bryan Latham, M.M.

Capt. J. Maxwell Macdonald.

Mr. Lloyd O. Owen, C.B.E., J.P.

Major Sir William Strang Steel, Bt.

Mr. T. Taylor.

The Earl Waldegrave.

Director General: Sir Henry Beresford-Peirse, Bt., C.B., F.R.S.E.

Deputy Director General: Mr. James Macdonald, C.B.E., F.R.S.E.

Secretary: Mr. H. A. Turner.

Director of Forestry for England: Mr. G. B. Ryle, C.B.E.

Director of Forestry for Scotland: Mr. A. Watt, C.B.E.

Director of Forestry for Wales: Mr. J. R. Thom.

Director (Headquarters): Mr. J. Q. Williamson, M.B.E.

CONTENTS

	<i>Page</i>
NAMES OF COMMISSIONERS AND SENIOR STAFF	2
GENERAL REVIEW	5
THE YEAR'S WORK	8
Private Forestry	8
Mining Timber Price Agreements	8
Forestry Commission Operations	8
Finance	8
Staff	8
Acquisition of Land	8
Disposals of Land and Other Assets	9
Planting	9
Production and Disposal of Forest Produce	9
Engineering	9
Research	9
Education	11
Publications	12
COMMITTEES	13
National Committees	13
Regional Advisory Committees	13
Home Grown Timber Advisory Committee	15
Advisory Committee on the Utilisation of Home Grown Timber	16
Mechanical Development Committee	17
Advisory Committee on Forest Research	17
APPENDIX I. FINANCIAL AND STATISTICAL TABLES	19
<i>Table</i>	
1. Forestry Fund: Summary	19
2. Account of Forestry Operations	20
3. Nurseries Account	20
4. Services other than Forestry Operations	22
5. Balance Sheet	24
6. Land Use	26
7. Land Managed by the Agricultural Departments	26
8. Forest Land Acquired, in Year	26
9. Summary Statement of Land Acquired, to end of year	27
10. Stocks of Nursery Plants	27
11. Nursery Plants Sold to Trade	27
12. Seed Imports	28
13. Planting in the Year	29
14. Progress of Planting in Last Ten Years	29
15. Species Planted in the Year	30
16. Fires	31
17. Causes of Fires	31
18. Areas and Volumes Thinned and Felled	32

	<i>Page</i>
19. Sales of Timber	32
20. Roads	33
21. Properties Managed	33
22. New Houses	33
23. Dedication Scheme	34
24. Approved Woodlands Scheme	34
25. Area Planted by Private Owners	35
26. Volume Licensed for Felling and Thinning	35
27. Area Licensed for Clear Felling	35
28. Land Use and Planting by Forests—England	36
29. Land Use and Planting by Forests—Scotland	41
30. Land Use and Planting by Forests—Wales	46
31. England: Main Statistics	48
32. Scotland: Main Statistics	50
33. Wales: Main Statistics	52
 APPENDIX II. MAPS	
England	54
Scotland	60
Wales	64
ADDRESSES OF THE MAIN OFFICES OF THE FORESTRY COMMISSION ...	66
PLATES	<i>... Central Inset</i>

ACKNOWLEDGMENTS

Thanks are due to the following for permission to use their respective pictures: Plate 2, *The Guardian*; Plate 5, The Bowater Organisation, Ltd. All the other illustrations are drawn from the Commission's own collection.

FORTY-THIRD ANNUAL REPORT
OF THE
FORESTRY COMMISSIONERS
FOR THE YEAR ENDED
30th SEPTEMBER, 1962

FORESTRY COMMISSION,
25, SAVILE ROW,
LONDON, W.1.

8th January, 1963

To:

THE MINISTER OF AGRICULTURE, FISHERIES AND FOOD
THE SECRETARY OF STATE FOR SCOTLAND

Gentlemen,

In pursuance of Section 7 (3) of the Forestry Act, 1945, I have the honour to transmit the 43rd Annual Report of the Forestry Commissioners which covers the Forest Year ended 30th September, 1962.

I am, Gentlemen,

Your obedient Servant,

(Sgd.) RADNOR,

Chairman.

GENERAL REVIEW

1. Sir John Stirling of Fairburn, who had been a Commissioner since 1948 and Chairman of the Scottish National Committee from 1950 to 1959, retired in September, 1962.

2. The Earl Waldegrave was appointed a Commissioner in August, 1962, to succeed Sir John. (Lord Waldegrave was appointed Deputy Chairman on 16th October, 1962.)

3. During the year Sir Arthur Gosling retired from the post of Director General which he had held since 1948. He was succeeded by Sir Henry Beresford-Peirse on the latter's return from a period of secondment as Deputy Director of the Forestry Division in the Food and Agriculture Organisation of the United Nations in Rome.

4. On his retirement Sir Arthur completed a career of 43 years during which he had served in virtually all ranks from Forester upwards. His unrivalled experience and the grasp of essentials which distinguished him were of especial value to the Commission both in the difficult years of recovery immediately after the war—when he was successively Director for Scotland and Deputy Director General—and later when, as Director General, he played the leading part in preparing the Commission for the developments which lie ahead.

5. The total area planted, at 97,000 acres (just on 62,000 acres by the Commission and 35,000 acres by private owners) was some 3,000 acres less than the total of 100,000 acres planted in the previous year, which was the highest ever recorded. Out of the total planted by the Forestry Commission, about 42,400 acres represented planting on bare land, the balance the replanting of felled or derelict woodland. The fall of 1,745 acres in the area planted by the Commission followed the pattern set by the Ministerial Statement of 24th July, 1958 which proposed that within the five years 1959–63 the total acreage planted by the Commission should be 300,000 acres and that, towards the end of the period, the annual planting should be reduced in extent. The area planted by private owners fell by some 1,700 acres; but, at over 35,000 acres, it was still considerably higher than was expected when the post-war plans for British forestry were being drawn up. It represents a considerable and praiseworthy achievement. The area planted by the Commission in Wales fell from 12,481 acres to 11,681 acres and in England from 17,930 acres to 15,499 acres. In Scotland there was, as in the previous year, an increase, the area planted being 34,768 acres, an increase of 1,486 acres. In Wales and in some areas in England and Scotland the problem of acquiring sufficient land to support the programme was again difficult; total acquisitions of forest land at 34,600 acres were less than the area planted by 27,300 acres and the reserve was once more reduced. It now stands at 316,800 or six times the average planting programme approved by Ministers for the next five years. The problem is particularly acute in Wales where it is clear that unless there is a rapid and unexpected increase in the rate of acquisition it will be impossible to adhere to the Commission's programme.

6. Although in some areas fire risk was very high (Scotland being generally an exception) and the fire danger season long, fire damage was relatively small, only 16 fires burning more than 20 acres or causing damage assessed at more than £1,000. The total number of fires reported was 1,822 as against 2,237 in the previous year. The total loss amounted to 988 acres and the damage to £65,200, equivalent to 9d. per £100 at risk. Comparable figures for the previous year were 306 acres and £24,224.

7. In private forestry, the two organisations—Timber Growers' Organisation and Scottish Woodland Owners' Association—representing private woodland owners are now fully established and are expanding. This was the third and last year in which financial assistance from the Government to these organisations was available and the Commission are glad to report that the prospects of continued development seem good.

8. The European market in softwood weakened during the year, particularly for material below sawlog size. This trend was reflected in the average price which the Commission received for its standing softwood trees which was

1.7d. (9.5 per cent.) less than in the previous year. The greatest decrease was in Scotland where there was a considerable fall in the use of mining timber by the National Coal Board.

9. The Board of Trade figures for production of all kinds of home grown pitwood, which closely reflect consumption, show that production was 1.6 per cent. higher than in the previous year. A slight drop of less than 0.5 per cent. in sawn pitwood was more than offset by an increase of approximately 7.0 per cent. in round pitwood. These figures must be set against the background of a decreasing use of mining timber, particularly in Scotland.

10. The price agreements for mining timber between the National Coal Board and the Federated Home Timber Associations of England and Wales and the Home Timber Merchants Association of Scotland, due to expire on 30th June, 1962, were extended to 30th September, 1962: subsequently new agreements were negotiated, to operate from 1st October, 1962. Previously there was no softwood sawn mining timber agreement for England and Wales; the conclusion of an agreement this year is an important step forward since there is a big potential outlet for home-grown sawn softwood mining timber in England and Wales.

11. Consumption of home-grown pulpwood during the year, at 363,000 tons, was 31 per cent. higher than the previous year's total of 278,000 tons. The new integrated chip-board factory and sawmill being erected at Thetford by Novobord (U.K.) Ltd. neared completion; Scottish Pulp (Development) Ltd.'s proposed pulpmill at Fort William was in the final stages of planning; and site work started at Hexham on a new chipboard factory for Airscrew-Weyroc Ltd.

12. Although the volume of the Commission's work has increased, the total number of industrial employees—men, women and juveniles—fell to 11,245, a decrease of 689 in the year. In part this fall in numbers arose from the postponement of some work to secure the economies which the Commission, in common with the rest of the public service, were required to achieve, and in part from the fall in the planting programme in Wales which resulted from the lack of adequate reserves of land in the right places. The main reason however was the rise in productivity and the improvement of techniques. This was accompanied by an increase in average earnings per head, which are now close on 58 per cent. greater than in 1954 when the number of workers employed was at its highest. Fortunately, drastic action to reduce numbers was not required; instead some vacancies arising for example from retirement and resignation were left unfilled.

13. When in July, 1958, the Minister of Agriculture made a statement to the House of Commons on forest policy, he indicated that there would be a review both of the Commission's planting programmes and of the structure of grants to private woodland owners in about five years' time. In August, 1962, the Minister announced that, as a preparation for this review, a working party of officials had been set up to examine these two subjects.

14. The Eighth British Commonwealth Forestry Conference took place in East Africa and was attended by the Commission's Director General and by three other officers of the Commission. The proceedings of the Conference will be published.

THE YEAR'S WORK

PRIVATE FORESTRY

15. Private owners planted 32,800 acres under the various grant schemes and it is estimated that about 2,300 acres were planted without the aid of grants. The total area planted on private estates was thus over 35,000 acres.

16. The area dedicated rose by 51,656 acres net to 733,567 acres, and the number of dedication schemes by 253 to 2,216. In addition, preparations for dedicating another 43,010 acres, representing 226 schemes, were well advanced. The acreage of woods not dedicated but managed according to an approved plan of operations under the Approved Woodlands Scheme rose by 3,405 acres to 153,574 acres, and the number of schemes increased by 31 to 608; plans of operations for a further 792 acres (5 schemes) were in hand. Grants paid amounted to £1,248,000; details are given in Tables 4 and 23-25 of Appendix I.

MINING TIMBER PRICE AGREEMENTS

17. The price agreements referred to in paragraph 10 are for two years, for peeled pitprops, tonnage wood and softwood sawn mining timber. For hardwood sawn mining timber, the agreement is for two years in Scotland and for one year in England and Wales. The delivered price of peeled pitprops under the new agreement is 5s. 5d. per hoppus foot, previously 5s. 6½d.; for tonnage wood it is 120s. per ton, previously 123s. 6d. Hardwood sawn mining timber prices showed some reduction which varied according to the category concerned. The price of hardwood chocks will range from 5s. 1¼d. to 5s. 10d. per cubic foot delivered, and coverboards from 5s. 9d. to 6s., depending on size and delivery point.

FORESTRY COMMISSION OPERATIONS

Finance

18. Receipts from the Grant-in-Aid voted by Parliament amounted to £11,670,000 and payments to £15,301,732. Receipts from the sale of timber, rents and sundry sources amounted to £3,445,169.

Staff

19. At 30th September, 1962, the non-industrial staff totalled 2,710 as compared with 2,647 a year before: of these one-half were in the Forester grades. The number of industrial employees—men, women and juveniles was 11,245. (This figure includes 273 part-time workers; the number of part-time workers on 1st October 1961, was 303.)

20. An increase of 8s. 6d. to 181s. in the basic weekly wage for adult workers was agreed. The increase was granted in two stages: the first stage was an interim increase of 2s. 6d. to the basic grade of adult workers (Grade III) in England and Wales only with effect from 26th February, 1962; the second was a general increase on 2nd April.

21. At the close of the year, a further pay claim had been lodged by the Trade Union Side of the Industrial and Trade Council.

Acquisition of Land

22. The gross area acquired, including land to which entry was allowed in advance of legal completion, was 51,077 acres, of which 36,926 acres were

plantable. Disposals and adjustments of area totalled 11,822 acres, of which 2,309 acres were plantable land and the remainder unplatable or grazing and other agricultural land. The net addition to the Commission's estate was 39,255 acres, of which 34,617 acres were plantable. Of this 80 per cent. was bare land, 18 per cent. was old woodland and 2 per cent. standing woods. By the end of the year the Commission's estate had reached a total of 2,584,554 acres, of which 1,715,595 acres was forest land, that is, acquired plantations, plantations established by the Forestry Commission and land remaining to be planted; the balance consisted of nurseries, rough grazing and other agricultural land, Forest Workers' holdings and unplatable and miscellaneous land. The average price paid for plantable land was £5 per acre against £5 15s. in 1961.

Disposals of Land and Other Assets

23. The year has seen an acceleration of the process of disposing of all assets surplus to the Commission's requirements. In all some 5,000 acres of surplus agricultural and grazing land were sold; in addition a number of buildings, mainly houses, were sold for a total of £52,000.

Planting

24. The area planted was 61,948 acres, 1,745 acres less than in 1961. Of this, 15,499 acres were in England, 34,768 acres were in Scotland and 11,681 acres were in Wales. The proportion between the planting of bare land (68 per cent.) and the planting of old woodlands (32 per cent.) remained much as in previous years.

Production and Disposal of Forest Produce

25. Thinnings and clear fellings in Commission forests produced 22·6 million hoppus feet, a decrease of 0·4 million hoppus feet compared with the previous year. Of this, the timber trade cut 13 million hoppus feet, an increase of 4 per cent. on trade fellings in Commission forests in 1961.

26. During the year agreements were in force for sales by tender of standing timber and thinnings totalling 17·0 million hoppus feet, slightly more than the previous year.

Engineering

27. 409 miles of road were completed to final standard bringing the total mileage of roads, both completed and in course of completion, to 7,248 miles. The maintenance of the system cost £453,000. Progress was made in bringing the Commission's vehicles and plant up to date. This should reduce maintenance costs and losses due to breakdowns.

Research

28. In silviculture, special attention has been paid to the problems of second-generation crops; for example, experimental data showing a greater depth of rooting and stability of trees on drained soils have become available. New research was started, in collaboration with the Royal Aircraft Establishment and the National Physics Laboratory, on the reaction of trees to varying wind forces: extension of this work using model trees shows promise as a means of analysing the wind-throw problem.

29. The Genetics Section completed the first country-wide survey of seed sources in 1961. Examination revealed shortages of seed sources of several exotic species. A re-survey of Britain begun during the year is planned to provide further seed sources of Norway and Sitka spruce, Lodgepole pine and Western hemlock, and to replace older sources of larches and Scots pine lost through felling.

30. "Plus" trees of Sitka spruce are being graded for their wood characteristics at the Forest Products Research Laboratory on the basis of large diameter increment cores taken at breast height.

31. In the Management Section working plan surveys were completed in 30 forests totalling 200,000 acres. Work was in progress in 21 forests totalling 157,000 acres.

32. In the Statistics Section the application of modern methods of analysis and electronic digital computing has assumed increasing importance. Progress has been made in the design of a system for the automatic processing of research data, and the necessary equipment for the collection, compilation, and storage of data are under development.

33. The Advisory Committee on the Utilisation of Home-Grown Timber met twice during the year. Work under its direction included the use of home-grown timber for cable drums, boat-building and box pallets for agricultural produce; the accelerated air-drying of timber; and the problem of wood wasp infestation in softwood timber used for the manufacture of packing cases for the export of goods to Australia.

34. Work on the properties of home-grown softwoods has continued in close collaboration with the Forest Products Research Laboratory. A report on the properties of home-grown Sitka spruce timber, referred to in last year's Annual Report, was published by the Department of Scientific and Industrial Research.*

35. The third Forest Machinery Exhibition was organised at the Bush Centre of Rural Economy near Edinburgh on the 5th and 6th of June, 1962. There were 65 exhibitors who demonstrated a wide range of machinery. As on previous occasions, attendance was very good, and much interest was displayed by growers, the trade, and by some foreign buyers.

36. Development has continued in the mechanisation of all aspects of timber haulage and loading, largely through the introduction of twin-drum winches and new loading equipment. Experiments in the use of hydro-static power and transmission give promise of future improvements in tractors and other forest machinery. Improvements have been made in machines for the preparation of ground for planting through both clearance of the surface and deep cultivation. Tests of the ever-increasing number of different makes of power saws have been carried out and the trend towards lower weight coupled with higher performance has been noted with satisfaction.

37. Grants were continued for research on soil problems at the Macaulay Institute, Aberdeen, and at Rothamsted Experimental Station, Harpenden; soil biology at the University College of North Wales, Bangor; the biochemistry

* Forest Products Research Bulletin—No. 48, *Properties of 30-37 Year Old Sitka Spruce Timber*. H.M.S.O. 1962. 3s. 0d.

of litter breakdown at the Commonwealth Forestry Institute, Oxford; the water relations of trees at the Commonwealth Forestry Institute; forest pathology at Cambridge University; physiology at the University College of Wales, Aberystwyth; and shelterbelts at Edinburgh University. Smaller grants assisted research on a variety of subjects.

Education

38. The year started with a total of 160 students in residence at the Commission's four Forester Training Schools. This was a higher figure than for some years and resulted from the decision to increase the intake of men from Great Britain; 98 new students were accepted, including 17 from Northern Ireland and overseas.

39. Of the 58 candidates who sat the final examinations, 56 were granted Forester Certificates; of these 47 became Assistant Foresters with the Forestry Commission, while five returned to the Northern Ireland and four to the African Forest Services. Two obtained employment on private estates in Great Britain.

Forest Worker Training Scheme

40. Considerable progress was made during the year. Instructors were selected for each Conservancy and Deputy Surveyorship and received training and guidance. By the end of the year 188 courses had been held on planting, brashing, drainage upkeep, weeding, tool maintenance, fencing, thinning and felling, power saws, and preparing ground.

41. Arrangements were nearing completion for the six-week courses which are to be run initially at Newton Rigg Farm School, Cumberland, for forester trainees and young forest workers.

Short Courses for Woodmen from Private Estates

42. Early in 1962 it was decided to reorganise the Committee concerned with the direction of courses designed for woodmen from private estates and to invite the participation of the Timber Growers' Organisation and the Scottish Woodland Owners' Association. The first meeting of the new Committee was held in September, 1962, with representatives from the two Royal Forestry Societies, the Timber Growers' Organisation, the Scottish Woodland Owners' Association and the Commission.

43. During the year three six-week courses were held on the same estates as in 1961; two on the Lowther Estates in Cumberland, in conjunction with the Newton Rigg Farm School where this time it was possible to provide accommodation for the students, and one on the Atholl Estates in Perthshire, by courtesy of the respective owners. A total of 37 men attended the courses; 36 took and passed the examination for either the Woodmen's Certificate of the Royal Forestry Society of England and Wales or the Junior Forester Certificate of the Royal Scottish Forestry Society and were also awarded the Commission's certificate of proficiency.

44. Two three-day courses, on chain-saws and soils, were organised in Scotland in conjunction with the Royal Scottish Forestry Society.

Northerwood House

45. Nineteen courses were held for Forestry Commission staff; places were offered on some of these courses to overseas foresters under an International

Labour Office scheme and six forest officers from the Irish Republic attended. A course on forest genetics, tree breeding and seed production was held as a contribution to the International Seed Year organised by the Food and Agriculture Organisation of the United Nations; it was attended by a number of foresters from overseas as well as by woodland owners and estate managers in this country. Other courses were conducted for landowners and agents, Local Government Officers, County Fire Officers and schoolteachers. Forestry students from the Universities of Oxford, Edinburgh, Aberdeen and from the University College of North Wales also stayed at the house while undertaking field training.

Publications

46. Nine new publications were issued through H.M. Stationery Office:

Forty-second Annual Report of the Forestry Commissioners, 1961. (H.C. 113. Session 1961-62). (5s. 6d.).

Report on Forest Research for the Year ended March, 1960. (12s. 0d.).

Report on Forest Research for the Year ended March, 1961. (14s. 0d.).

Bulletin 34. Chalk Downland Afforestation. (10s. 0d.).

Leaflet 46. Titmice in Woodlands. (1s. 9d.).

Guides:—

Short Guide to Bedgebury Pinetum and Forest Plots. (6d.).

Short Guide to Snowdonia National Forest Park. (6d.).

Booklets:—

No. 6. National Forest Parks. (2s. 6d.).

No. 7. The Plan of Operations. (3s. 0d.).

47. In addition, eighteen existing publications were revised and re-issued.

48. One new free pamphlet, "Visit the Snowdonia National Forest Park", was issued and eleven existing pamphlets were revised and reprinted.

49. Twenty-seven papers were issued for the Eighth British Commonwealth Forestry Conference.

RADNOR, *Chairman.*

WALDEGRAVE.

R. C. G. COTTERELL.

LLOYD O. OWEN.

D. C. BOWSER.

BRYAN LATHAM.

F. W. STRANG STEEL.

E. GWYN DAVIES.

J. MAXWELL MACDONALD.

TOM TAYLOR.

H. A. TURNER, *Secretary,*
25, Savile Row,
London, W.1.

COMMITTEES

National Committees

The National Committees met monthly except in August. The membership of these Committees at 30th September, 1962, was as follows:—

NATIONAL COMMITTEE FOR ENGLAND

Lt.-Col. Sir Richard C. G. Cotterell, Bt. (*Chairman*), Col. M. E. St. J. Barne, Mr. C. M. Floyd, Mr. E. Bryan Latham, Mr. W. H. Pearson, The Earl Waldegrave. *Secretary to the Committee*: Mr. A. D. Palmer.

NATIONAL COMMITTEE FOR SCOTLAND

Major D. C. Bowser (*Chairman*), Major D. J. Brodie, Captain J. Craig, Captain J. Maxwell Macdonald, Mr. J. McNaughton, Major Sir William Strang Steel, Bt., Mr. T. Taylor. *Secretary to the Committee*: Mr. T. H. McGeorge.

NATIONAL COMMITTEE FOR WALES

Mr. Lloyd O. Owen (*Chairman*), Alderman E. Gwynfryn Davies, Mr. J. E. Lewis, Dr. Richard Phillips, Mr. P. R. D. Spurgin. *Secretary to the Committee*: Mr. G. F. Taylor.

Regional Advisory Committees

The membership of the Committees at 30th September, 1962, was as follows:—

ENGLAND

North West Conservancy

The Earl of Bradford (*Chairman*), Mr. J. L. Benson, Mr. J. T. Edmondson, Major Charles Graham, The Earl of Lonsdale, Mr. H. W. D. Pollock, Mr. R. I. Price, Mr. R. W. S. Thompson, Mr. C. J. Venables, Mr. D. H. White. *Secretary to the Committee*: Mr. J. W. Elliott. The Committee met in October, 1961, and April, 1962.

North East Conservancy

Councillor J. T. Trevelyan (*Chairman*), Professor J. S. Allen, Mr. S. Earnshaw, Mr. T. R. F. Fenwick, Mr. R. H. B. Hamersley, Mr. W. P. Hedley, Col. C. H. Mitchell, Mr. R. Stanley, Mr. H. Wardale. *Secretary to the Committee*: Mr. L. A. Chaplin. The Committee met in December, 1961, and June, 1962.

East Conservancy

Major R. B. Verney (*Chairman*), Mr. A. Bayne, Mr. S. E. Gurney, Mr. J. C. P. Langton, Mr. G. Oates, Mr. F. C. Osmaston, Mr. M. G. Reade, Mr. C. G. Soames, The Earl of Yarborough. *Secretary to the Committee*: Mr. G. H. Clark. The Committee met in April, 1962.

South East Conservancy

Mr. G. E. H. Palmer (*Chairman*), Mr. A. E. Aitkins, Mr. G. E. H. Calvert, Col. Sir Ralph S. Clarke, The Viscount Cowdray, Mr. T. J. Daniel, Mr. A. L. F. Hills, Lt.-Col. Sir William Mount, Bt., Major R. E. Whitaker. *Secretary to the Committee*: Mr. H. W. Gulliver. The Committee met in November, 1961, and May, 1962.

South West Conservancy

Sir Dennis F. B. Stucley, Bt. (*Chairman*), Brig. A. F. L. Clive, Mr. J. E. Garfitt, Mr. H. P. R. Hoare, Lord Hylton, Mr. J. R. Maeer, Major J. L. Pilling, Lt.-Comdr. R. J. B. Mildway-White. *Secretary to the Committee*: Mr. R. Coote. The Committee met in October, 1961, and May, 1962.

SCOTLAND

North Conservancy

Mr. A. B. L. Munro-Ferguson (*Chairman*), Mr. J. Armstrong, Mr. G. E. Brown, Col. A. E. Cameron, Mr. C. J. Campbell, Mr. R. Dean, Mr. J. Grant, Major I. G. H. Houldsworth, Mr. A. S. Kinnear. *Secretary to the Committee*: Mr. M. Nicolson. The Committee met in January and June, 1962.

East Conservancy

Professor H. M. Steven (*Chairman*), The Hon. James Bruce, Mr. J. B. Hendry, Sir Ian Forbes Leith, Bt., Mr. A. Duncan Millar, Lt.-Col. J. W. Nicol, Major R. N. Jardine Paterson, Mr. R. A. Raffan, Mr. W. J. Riddoch. *Secretary to the Committee*: Mr. J. Steele. The Committee met in November, 1961, and May, 1962.

South Conservancy

Major Simon F. Macdonald Lockhart (*Chairman*), Sir Arthur B. Duncan, Mr. H. Foster, Mr. T. E. Hubbard, Mr. S. E. A. Landale, Mr. J. H. Mackay, Mr. D. M. McQueen, Major John Sprot, Mr. R. Finlay Wilson. *Secretary to the Committee*: Mr. T. Farmer. The Committee met in October, 1961, and March, 1962.

West Conservancy

Sir George I. Campbell of Succoth, Bt. (*Chairman*), Capt. P. Lorne Mackie-Campbell, Sir Ronald A. Orr-Ewing, Bt., Lt.-Col. W. D. H. C. Forbes, Mr. D. S. Hendrie, Mr. W. D. MacGregor, Major D. M. Mackinnon, Mr. P. S. Murray. *Secretary to the Committee*: Mr. J. B. Wharam. The Committee met in March and July, 1962.

WALES

North Conservancy

Col. P. R. Davies-Cooke (*Chairman*), Mr. R. W. Allan, Mr. B. J. Crichton, Mr. Gwilym Davies, Capt. G. L. Bennett-Evans, Professor E. C. Mobbs, Mr. Langshaw Rowland, Mr. David Tudor, Col. J. F. Williams-Wynne. *Secretary to the Committee*: Mr. K. Mayhew. The Committee met in November, 1961, and March, 1962.

South Conservancy

Colonel C. G. Traherne (*Chairman*), Mr. D. G. Badham, Mr. M. L. Bourdillon, Mr. Bryn Davies, Mr. H. A. Hyde, Mr. A. J. Birt Llewellyn, Mr. A. J. Llewellyn, Mr. M. H. Maxwell, Brigadier R. P. Waller. *Secretary to the Committee*: Mr. W. R. Doherty. The Committee met in October, 1961, and March, 1962.

Home Grown Timber Advisory Committee

The membership of the Committee at 30th September, 1962, was as follows:—

The Earl of Radnor ...		Chairman, Forestry Commission <i>(Chairman of the Committee)</i>
Sir Henry Beresford-Peirse ...	}	Forestry Commission
Mr. James Macdonald ...		
Mr. H. A. Turner ...		
Mr. G. B. Ryle ...		
Mr. A. Watt ...		
Mr. J. L. May...		Board of Trade
Dr. A. C. Copisarow ...		Department of Scientific and Industrial Research (Forest Products Research Laboratory)
Major Sir Richard G. Proby,	}	Timber Growers Organisation
Bt. ...		
The Earl of Bradford...		
Mr. Langshaw Rowland ...		
Lt.-Col. Sir William Mount, Bt. ...		
Mr. A. L. P. F. Wallace of Candacraig ...	}	Scottish Woodland Owners Association
The Duke of Buccleuch ...		
Major D. Gordon ...		
Mr. A. B. L. Munro-Ferguson		
Mr. S. G. Waters ...	}	Federated Home Timber Associations
Mr. N. M. R. Moody ...		
Mr. G. E. H. Calvert...		
Mr. F. Sellers ...		
Mr. D. Brown...	}	Home Timber Merchants Association of Scotland
Mr. R. Finlay Wilson ...		
Mr. T. Y. Gibson ...		
Mr. W. J. Riddoch		
Mr. J. B. Dawson		Timber Trades Federation

Secretary: Mr. R. G. Brown.

The Committee met in November, 1961, and January, May and July, 1962.

Advisory Committee on the Utilisation of Home Grown Timber

The membership of the Committee at 30th September, 1962, was as follows:—

The Earl of Radnor	Chairman, Forestry Commission <i>(Chairman of the Committee)</i>
Sir Henry Beresford-Peirse }	Forestry Commission
Mr. James Macdonald	
Mr. J. C. Mather	Board of Trade
Mr. F. G. O. Pearson	Department of Scientific and Industrial Research (Forest Products Research Laboratory)
Mr. Langshaw Rowland }	The Timber Growers Organisation
Col. J. F. Williams-Wynne	
Major S. F. Macdonald Lockhart	Scottish Woodland Owners Association
Mr. F. Sellers	Federated Home Timber Associations
Mr. J. C. McGregor	Home Timber Merchants Association of Scotland
Mr. H. Richardson	Timber Research and Development Association
Mr. G. R. Jacob	...	Home Grown Timber Marketing Corporation
Dr. G. O. Aspinall	... }	Independent Members
Mr. W. E. Bruce	... }	
Mr. C. H. Farrar	... }	
Mr. W. G. Trust	... }	

Secretary: Mr. E. G. Richards.

The Committee met in December, 1961, and June, 1962.

Mechanical Development Committee

The membership of the Committee at 30th September, 1962, was as follows:—

Mr. James Macdonald	Deputy Director General, Forestry Commission (<i>Chairman of the Committee</i>)
Mr. J. Q. Williamson... Mr. E. G. Richards ... Mr. E. H. Macmillen... Mr. J. W. L. Zehetmayr ... Mr. D. M. Beaton ... Mr. C. D. MacMahon ... Mr. E. F. Granfield ...	} Forestry Commission
Mr. J. E. Tilley	Federated Home Timber Associations
Mr. David Brown	Home Timber Merchants Association of Scotland
Mr. H. J. Hamblin	National Institute of Agricultural Engineering
Dr. D. Morrison	Department of Mechanical Engineering, Glasgow University
Mr. A. L. P. F. Wallace of Candacraig	Scottish Woodlands Owners Association
Mr. A. F. Drewe	Timber Growers Organisation

Secretary: Col. R. G. Shaw.

The Committee met in April, 1962.

Advisory Committee on Forest Research

At 30th September, 1962, the membership of the Committee, over which the Chairman of the Commission presides, was as follows:—

Mr. F. C. Bawden
Professor F. W. Rogers Brambell
Professor R. Brown
Dr. A. C. Copisarow
Dr. D. J. Finney
Dr. J. W. Gregor
Mr. G. V. Jacks
Professor E. C. Mobbs
Professor W. H. Pearsall
Professor R. D. Preston
Professor H. M. Steven
Dr. A. B. Stewart

APPENDIX I

FINANCIAL AND STATISTICAL TABLES

FORESTRY FUND: SUMMARY

Year ended 30th September

£

Table 1

	Balance from Preceding Year	Receipts			Payments
		Total	From Parliamentary Votes	From Sales of Produce, Rents, etc.	
GRAND TOTAL 1920-1962 ...	—	187,680,945	142,371,800	45,309,145	187,664,409
1920-1929 ...	—	4,421,484	3,570,000	851,484	4,502,018
1930-1939 ...	—	8,114,652	6,292,800	1,821,852	7,926,093
1940-1949 ...	—	26,370,778	18,945,000	7,425,778	26,238,789
1950 ...	240,014	7,030,748	5,495,000	1,535,748	7,025,414
1951 ...	245,348	8,161,846	6,350,000	1,811,846	8,012,098
1952 ...	395,096	9,258,033	6,893,000	2,365,033	9,277,642
1953 ...	375,487	9,258,319	7,041,000	2,217,319	9,421,426
1954 ...	212,380	10,357,941	7,850,000	2,507,941	10,373,211
1955 ...	197,110	11,131,827	8,473,000	2,658,827	11,053,705
1956 ...	275,232	11,087,690	8,351,000	2,736,690	11,235,170
1957 ...	127,752	12,500,922	9,360,000	3,140,922	12,209,471
1958 ...	419,203	12,112,533	8,993,000	3,119,533	12,459,450
1959 ...	72,286	13,415,164	10,217,000	3,198,164	13,076,547
1960 ...	410,903	13,832,639	10,702,000	3,130,639	13,930,162
1961 ...	313,380	15,511,200	12,169,000	3,342,200	15,621,481
1962 ...	203,099	15,115,169	11,670,000	3,445,169	15,301,732
1963 ...	16,536	—	—	—	—

Notes.—The above amounts are cash actually received or paid out. The balance carried forward to 1963 consists of £162,948 cash at bank (Table 5) less £146,412 for cash suspense items included in sundry debit balances and sundry creditors (Table 5).

Table 2

ACCOUNT OF FORESTRY OPERATIONS FOR THE

<i>1961</i> £000's		£000's	1962 £000's
	Preparation and formation of plantations:—		
611	Preparation of ground including ploughing	573	
1,572	Planting including cost of plants	880	
596	New drains and fences	560	
		—————	2,013
	Maintenance of plantations:—		
362	Beating up, including cost of plants	246	
1,148	Weeding and cleaning plantations	1,126	
404	Maintenance of drains and fences	420	
61	Enrichment, including cost of plants	36	
282	Maintenance of roads	282	
28	Miscellaneous	31	
		—————	2,141
	Forest protection:—		
262	Fire protection	256	
261	Other protection	280	
		—————	536
	Production:—		
761	Felling, extraction and processing	742	
234	Carriage and other expenditure	251	
		—————	993
801	Estate expenses		716
			—————
			6,399
	Overheads:—		
3,065	Forest (including wet time, holidays etc. of Forest Workers and salaries and expenses of Foresters)	2,971	
210	District (salaries and expenses of District Officers)	201	
	Conservancy (salaries and expenses of Conservancy Office staff)	647	
626	Directorate and Headquarters (salaries and expenses)	710	
		—————	4,529
7,976	Interest on capital advanced by the Exchequer		9,094
			—————
<u>19,927</u>			<u>20,022</u>

Table 3

NURSERIES ACCOUNT FOR THE

<i>1961</i> £000's		1962 £000's
133	Seedbeds	116
259	Transplant lines	208
100	Other expenditure	80
303	Overheads	259
770	Decrease in Stocks	61
		—————
<u>1,565</u>		<u>724</u>

Table 4

NET EXPENDITURE ON SERVICES OTHER THAN FORESTRY OPERATIONS
DURING THE YEAR ENDED 30TH SEPTEMBER, 1962

1961 £000's		1962 £000's
	<i>PRIVATE FORESTRY</i>	
	Grants under Dedication Schemes:—	
3	Basis I	5
578	Basis II: Planting Grants ...	572
378	Management Grants	438
3	Maintenance Grants ...	1
81	Approved Woodlands Planting Grants	90
80	Small Woods Planting Grants	79
3	Other Planting Grants ...	2
57	Scrub Clearance Grants	61
3	Miscellaneous	6
226	Administration including advisory services ...	229
1,412		1,483
	<i>RESEARCH</i>	
205	Silviculture, including Nursery Work	210
36	Genetics	34
65	Mensuration, Census, etc.	62
35	Pathology and Entomology	40
7	Machinery	10
4	Utilisation ...	4
17	Grants to Institutions ...	19
35	Miscellaneous	38
23	Administration ...	29
427		446
1,839	<i>Carry forward ...</i>	1,929

Table 4—continued

1961 £000's 1,839	<i>Brought forward</i>	1962 £000's 1,929
<i>EDUCATION</i>		
91	Forester Training Schools	112
9	Short Courses	7
2	Forestry Apprenticeship Scheme	1
5	Northerwood House	6
1	Forest Worker Training Scheme	20
17	Administration	17
125	—	163
<i>SPECIAL SERVICES</i>		
69	Licensing of Felling ...	58
12	Information and Shows	13
8	Miscellaneous ...	6
4	Administration ...	4
93	—	81
2,057	—	2,173

Note.—Total net expenditure from 29th November, 1919 to 30th September, 1962 under the main heads of this table was as follows:—

	£000's
Private Forestry	11,052
Research ...	4,160
Education ...	2,402
Special Services	2,847
	20,461

Table 5

BALANCE SHEET AS AT

1961 £000's		1962 £000's	£000's
	Capital Account:—		
103,024	To 30th September 1961	113,136	
12,169	Grants in aid of Forestry Fund during year ...	11,670	
2,057	Deduct cost of services other than Forestry Operations (Table 4)	2,173	
<u>113,136</u>		<u>9,497</u>	
		122,633	
57,153	Interest accrued ...	66,247	
<u>170,289</u>		<u>188,880</u>	
	Value of properties, including New and Dean Forests, acquired under Forestry (Transfer of Woods) Orders, 1924-61		985
987	Value at 21 September, 1939 of properties acquired under Forestry (Transfer of Woods from the Secretary of State for Air) Order, 1939		9
9	Value of properties acquired by transfer from the Minister of Agriculture, Fisheries and Food under Section 4 of Forestry Act, 1945		25
25	Value of timber acquired by transfer from H.M. Board of Admiralty under Section 4 of Forestry Act, 1945		8
8	Gifts of land and buildings		147
107			<u>190,054</u>
<u>171,425</u>			8,180
7,542	Provision for pensions and gratuities		1,040
1,202	Sundry Creditors ...		
	Insurance Account:—		
	Balance at 30th September 1961	275	
	Provision made during year	61	
		<u>336</u>	
	Less—Losses during year	48	
275		<u>288</u>	
<u>180,444</u>			<u>199,562</u>

30TH SEPTEMBER, 1962

		1962				
		At 30th Septem- ber 1961	Net addi- tions during year	Depre- ciation for year		
<i>1961</i> £000's		£000's	£000's	£000's	£000's	
Fixed Assets, at cost less Depreciation:						
	Land	5,560	283	—	5,843	
	Roads and bridges ...	14,958	1,802	—	16,760	
	Buildings	8,714	440	172	8,982	
	Powered vehicles and machines ...	1,142	551	293	1,400	
	Sundry plant, equipment and furni- ture	182	62	42	202	
<i>30,556</i>		<u>30,556</u>	<u>3,138</u>	<u>507</u>	<u>33,187</u>	
Current Assets:—						
<i>31</i>	Farm stocks		25			
<i>1,842</i>	Nursery stocks, supplies at forests, etc. ...		1,757			
<i>492</i>	Felled timber: stocks and work in progress		504			
<i>610</i>	Debtors and sundry debit balances ...		582			
<i>173</i>	Loans to Private Woodland Owners		197			
<i>430</i>	Cash at banks and in hand		163			
			<u> </u>			3,228
Debentures and shares:—						
<i>15</i>	Debentures in Cowal-Ari Sawmilling Co. Ltd., Argyll		15			
<i>1</i>	Shares in Parkend Saw Mills Ltd., Forest of Dean		1			
			<u> </u>			16
Forests—Net cost of growing timber:—						
	To 30th September, 1961		146,294			
During year:						
	Net cost transferred from Forestry Operations Account (Table 2)		16,817			
<i>146,294</i>	Growing timber purchased		20			
			<u> </u>			163,131
<u><i>180,444</i></u>						<u>199,562</u>

*Note:—*The Balance Sheet and preceding accounts have not yet been audited by the Comptroller and Auditor General.

LAND USE

Table 6 At 30th September, 1962 Thousand acres

	Great Britain	England	Scotland	Wales
Total area	2,584.5	738.7	1,484.8	361.0
Forest Land: Total	1,715.5	602.1	806.8	306.6
Standing woods acquired	83.5	52.5	25.0	6.0
Planted by Forestry Commission	1,315.2	462.1	602.2	250.9
To be planted	316.8	87.5	179.6	49.7
Other Land: Total	869.0	136.6	678.0	54.4
Nurseries	2.0	.8	.8	.4
Agricultural and grazing	490.2	52.2	400.7	37.3
Forest Workers' Holdings	16.0	5.3	6.0	4.7
Unplantable and miscellaneous	360.8	78.3	270.5	12.0

LAND MANAGED BY THE AGRICULTURAL DEPARTMENTS

Table 7 At 30th September, 1962 Acres

	Great Britain	England	Scotland	Wales
Total area	380,764	32,865	328,879	19,020
Forest land	28,632	453	27,401	778
Agricultural and other land	352,132	32,412	301,478	18,242

FOREST LAND ACQUIRED IN FOREST YEAR 1962

Table 8 Acres

	Great Britain	England	Scotland	Wales
Total area	34,617	4,858	24,822	4,937
Standing woods	769	669	—1	101
Bare land for afforestation	27,819	1,863	21,953	4,003
Former woodland for replanting	6,029	2,326	2,870	833

SUMMARY STATEMENT OF LAND ACQUIRED TO THE END OF
FOREST YEAR 1962

Table 9

Acres

	Great Britain	England	Scotland	Wales
Total acquired	2,476,363	641,493	1,479,199	355,671
By lease or feu: Total	667,791	271,197	291,993	104,601
Forest land	505,995	245,891	174,299	85,805
Other land	161,796	25,306	117,694	18,796
By Purchase: Total	1,808,572	370,296	1,187,206	251,070
Forest land	1,117,230	321,663	585,300	210,267
Other land	691,342	48,633	601,906	40,803

STOCKS OF NURSERY PLANTS

Table 10

At 30th September, 1962

Thousand plants

	Great Britain	England	Scotland	Wales
Total stocks	398,737	120,312	207,261	71,164
Transplants	177,436	52,122	93,482	31,832
Seedlings	221,301	68,190	113,779	39,332

NURSERY PLANTS SOLD TO THE TRADE IN THE FOREST YEAR 1962

Table 11

Thousand plants

	Total	Transplants	Seedlings
All species: Total	10,444	5,065	5,379
Coniferous: Total	9,958	4,781	5,177
Scots pine	1,214	640	574
Corsican pine	65	63	2
Lodgepole pine	637	91	546
European larch	123	123	—
Japanese larch	535	413	122
Douglas fir	1,448	389	1,059
Norway spruce	1,455	619	836
Sitka spruce	3,159	1,482	1,677
Other conifers	1,322	961	361
Broadleaved: Total	486	284	202
Ash	1	1	—
Oak	115	16	99
Beech	302	247	55
Other broadleaved species	68	20	48

SEED IMPORTS BY THE FORESTRY COMMISSION IN THE FOREST YEAR 1962

Table 12

Species	Quantity (lb.)	Origin
All species: Total	9,962	—
Coniferous: Total	7,643	—
Corsican pine	992	Corsica
Lodgepole pine	34	Long Beach, Washington, U.S.A.
Lodgepole pine	72	Olney, Oregon (N. Cascades), U.S.A.
Pinus radiata	55	New Zealand
European larch	264	Wroclaw, Poland
European larch	44	Radom, Poland
European larch	100	Kobersdorf, Lower Austria
European larch	200	Bruntal, Moravia, Czecho-Slovakia
Norway spruce	1,500	Austria
Norway spruce	1,250	Carinthia, Austria
Norway spruce	200	Styria, Austria
Sitka spruce	138	Vancouver Island, British Columbia
Sitka spruce	605	Washington, S. Coastal, U.S.A.
Sitka spruce	505	Washington, N. Coastal, U.S.A.
Sitka spruce	20	Sitka, Alaska
Douglas fir	100	Elma, Washington, U.S.A.
Abies nobilis	1,207	Oregon, N. Cascades, U.S.A.
Abies nobilis	293	Washington, S. Cascades, U.S.A.
Other conifers	64	—
Broadleaved: Total	2,319	—
Pedunculate oak	896	Holland
Red oak	1,400	Belgium
Other broadleaved	23	—

PLANTING IN THE FOREST YEAR 1962

Table 13

Acres

						Total	Afforested	Replanted
Great Britain	61,948	42,413	19,535
Conifer	60,034	42,161	17,873
Broadleaved	1,914	252	1,662
England	15,499	6,103	9,396
Conifer	13,812	5,888	7,924
Broadleaved	1,687	215	1,472
Scotland	34,768	28,135	6,633
Conifer	34,691	28,109	6,582
Broadleaved	77	26	51
Wales	11,681	8,175	3,506
Conifer	11,531	8,164	3,367
Broadleaved	150	11	139

PROGRESS OF PLANTING IN THE LAST TEN FOREST YEARS 1953-62

Table 14

Acres

Year	Great Britain	England	Scotland	Wales
1953	67,610	21,508	34,337	11,765
1954	70,437	22,994	34,344	13,099
1955	67,906	21,222	34,042	12,642
1956	62,400	20,822	29,751	11,827
1957	57,881	19,332	26,696	11,853
1958	52,398	17,175	24,863	10,360
1959	55,136	17,781	25,651	11,704
1960	61,686	18,742	29,777	13,167
1961	63,693	17,930	33,282	12,481
1962	61,948	15,499	34,768	11,681

SPECIES PLANTED IN THE FOREST YEAR 1962

Table 15

	Thousand plants													
	Total	Scots Pine	Corsican Pine	Lodgepole Pine	European Larch	Japanese Larch	Douglas Fir	Norway Spruce	Sitka Spruce	Oak	Beech	Other species		
												Conifer	Broad-leaved	
Great Britain ...	121,580	18,778	6,010	18,046	1,632	2,948	5,465	10,749	37,283	578	3,461	15,563	1,067	
England, Total	37,030	6,491	4,584	3,222	737	976	2,642	4,748	3,855	491	3,049	5,398	837	
<i>Conservancy:</i>														
North West...	6,244	904	1,063	1,057	62	7	206	511	983	82	195	964	210	
North East ...	9,291	2,503	235	1,848	207	123	246	464	2,059	9	311	979	307	
East ...	7,014	1,076	1,855	—	192	—	249	1,780	—	119	653	1,063	27	
South East ...	3,782	661	806	77	15	2	255	412	—	26	333	1,124	71	
South West...	4,251	443	314	156	38	55	932	954	406	144	332	405	72	
New Forest...	1,434	347	226	77	—	1	84	77	5	84	58	354	121	
Dean Forest	2,096	273	84	—	129	143	322	549	—	23	337	223	13	
Research ...	2,918	284	1	7	94	645	348	1	402	4	830	286	16	
Scotland, Total	60,993	11,624	578	12,117	887	1,245	1,216	3,280	24,684	56	184	4,968	154	
<i>Conservancy:</i>														
North ...	17,806	7,658	284	3,223	382	745	317	301	4,296	1	19	508	72	
East ...	14,496	3,375	88	3,754	378	176	408	1,008	4,030	34	109	1,095	41	
South ...	16,559	326	157	3,240	70	222	362	1,122	9,368	12	42	1,612	26	
West ...	12,073	256	49	1,893	56	101	128	843	6,982	8	12	1,739	6	
Research ...	59	9	—	7	1	1	1	6	8	1	2	14	9	
Wales, Total ...	23,557	663	848	2,707	8	727	1,607	2,721	8,744	31	228	5,197	76	
<i>Conservancy:</i>														
North ...	10,122	70	670	592	5	208	738	823	4,944	26	70	1,934	42	
South ...	13,435	593	178	2,115	3	519	869	1,898	3,800	5	158	3,263	34	

FIRES IN FORESTS IN THE FOREST YEAR 1962

Table 16

	Great Britain	England	Scotland	Wales
Number of fires	1,822	908	313	601
Area burned (acres) ...	988	269	124	595
Value of damage (£'s) ...	65,199	16,653	9,403	39,143

CAUSES OF FIRES IN THE FOREST YEAR 1962

Table 17

Number

	Great Britain	England	Scotland	Wales
Total	1,822	908	313	601
Railways	1,182	611	208	363
Adjoining land	216	65	39	112
Public	174	77	29	68
Commission employees ...	11	7	3	1
Incendiarism	18	14	2	2
Miscellaneous	30	23	5	2
Unknown	191	111	27	53

AREAS OF PLANTATIONS AND VOLUMES OF TIMBER THINNED
AND FELLED IN THE FOREST YEAR 1962

Table 18

	Felled		Thinned		Total Volume Felled and Thinned (Million hoppus feet)
	Area (acres)	Volume (Million hoppus feet)	Area (acres)	Volume (Million hoppus feet)	
Great Britain ...	4,288	6.358	39,808	16.220	22.578
England, Total ...	2,352	3.658	17,971	7.195	10.853
<i>Conservancy.</i>					
North West ...	382	.392	4,610	1.650	2.042
North East ...	215	.303	2,152	.676	.979
East ...	513	.691	4,497	2.086	2.777
South East ...	452	.666	1,223	.426	1.092
South West ...	330	.511	2,428	1.087	1.598
New Forest ...	74	.207	1,678	.677	.884
Dean Forest ...	386	.888	1,383	.593	1.481
Scotland, Total ...	669	1.431	13,179	5.396	6.827
<i>Conservancy:</i>					
North ...	173	.504	1,829	1.107	1.611
East ...	243	.415	5,776	1.700	2.115
South ...	127	.275	2,664	1.244	1.519
West ...	126	.237	2,910	1.345	1.582
Wales, Total ...	1,267	1.269	8,658	3.629	4.898
<i>Conservancy:</i>					
North ...	632	.803	4,931	2.174	2.977
South ...	635	.466	3,727	1.455	1.921

SALES OF TIMBER IN THE FOREST YEAR 1962

Table 19

Million hoppus feet

Description	Great Britain	England	Scotland	Wales
Trees sold standing ...	12.159	3.939	5.158	3.062
Converted* ...	7.801	5.372	1.297	1.132
Round timber and saw logs ...	1.505	1.063	.326	.116
Telegraph and other selected poles045	.040	.001	.004
Mining timber ...	1.651	1.212	.049	.390
Posts and stakes ...	1.143	.377	.715	.051
Pulpwood and boardmill material ...	2.339	1.778	.122	.439
Sawn timber (roundwood equivalent)042	.010	.025	.007
Firewood739	.559	.059	.121
Miscellaneous337	.333	—	.004
Poles sold in length (other than selected)994	.436	.232	.326

* *Note.*—In addition 0.5 million hoppus feet were converted and used internally for forest and estate purposes. (England 0.2, Scotland 0.2, Wales 0.1.)

CONSTRUCTION AND MAINTENANCE OF FOREST ROADS
IN THE FOREST YEAR 1962

Table 20

Miles

	Great Britain	England	Scotland	Wales
Completed during year	409	134	159	116
Under construction at end of year	222	191	13	18
Maintained during year	7,248	3,399	2,310	1,539

PROPERTIES MANAGED BY THE COMMISSION

Table 21

At 30th September, 1962

Number

	Great Britain	England	Scotland	Wales
Forest Properties	5,257	1,953	2,393	911
Foresters' Houses	982	440	354	188
Forest Workers' Houses	2,442	862	1,280	300
Forest Workers' Holdings	1,109	428	486	195
Miscellaneous	724	223	273	228
Other Properties	5,151	2,098	2,027	1,026
Farms and other agricultural subjects	2,178	782	803	593
Residential and miscellaneous	973	474	319	180
Sporting lettings	2,000	842	905	253
Easements, permissions, etc.	5,849	2,855	1,738	1,256

NEW HOUSES COMPLETED IN THE FOREST YEAR AND UNDER CONSTRUCTION

Table 22

At 30th September, 1962

Number

	Great Britain	England	Scotland	Wales
Completed	40	15	11	14
Under construction	23	7	8	8

PROGRESS OF THE DEDICATION SCHEME FOR PRIVATE ESTATES
IN THE FOREST YEAR 1962

Table 23

	Great Britain		England		Scotland		Wales	
	Number	Area (acres)	Number	Area (acres)	Number	Area (acres)	Number	Area (acres)
<i>Schemes completed:</i>								
Total	2,216	733,567	1,473	392,601	535	304,886	208	36,080
At end of previous year (1961) ...	1,963	681,911	1,299	366,597	489	285,448	175	29,866
During year (net)...	253	51,656	174	26,004	46	19,438	33	6,214
<i>Approved or in preparation at end of year</i>	226	43,010	158	26,279	18	5,720	50	11,011

PROGRESS OF THE APPROVED WOODLANDS SCHEME FOR PRIVATE ESTATES
IN THE FOREST YEAR 1962

Table 24

	Great Britain		England		Scotland		Wales	
	Number	Area (acres)	Number	Area (acres)	Number	Area (acres)	Number	Area (acres)
<i>Schemes completed:</i>								
Total	608	153,574	503	110,741	84	38,825	21	4,008
At end of previous year (1961) ...	577	150,169	473	106,935	84	39,203	20	4,031
During year (net)...	31	3,405	30	3,806	—	—378	1	—23
<i>Approved or in preparation at end of year</i>	5	792	5	792	—	—	—	—

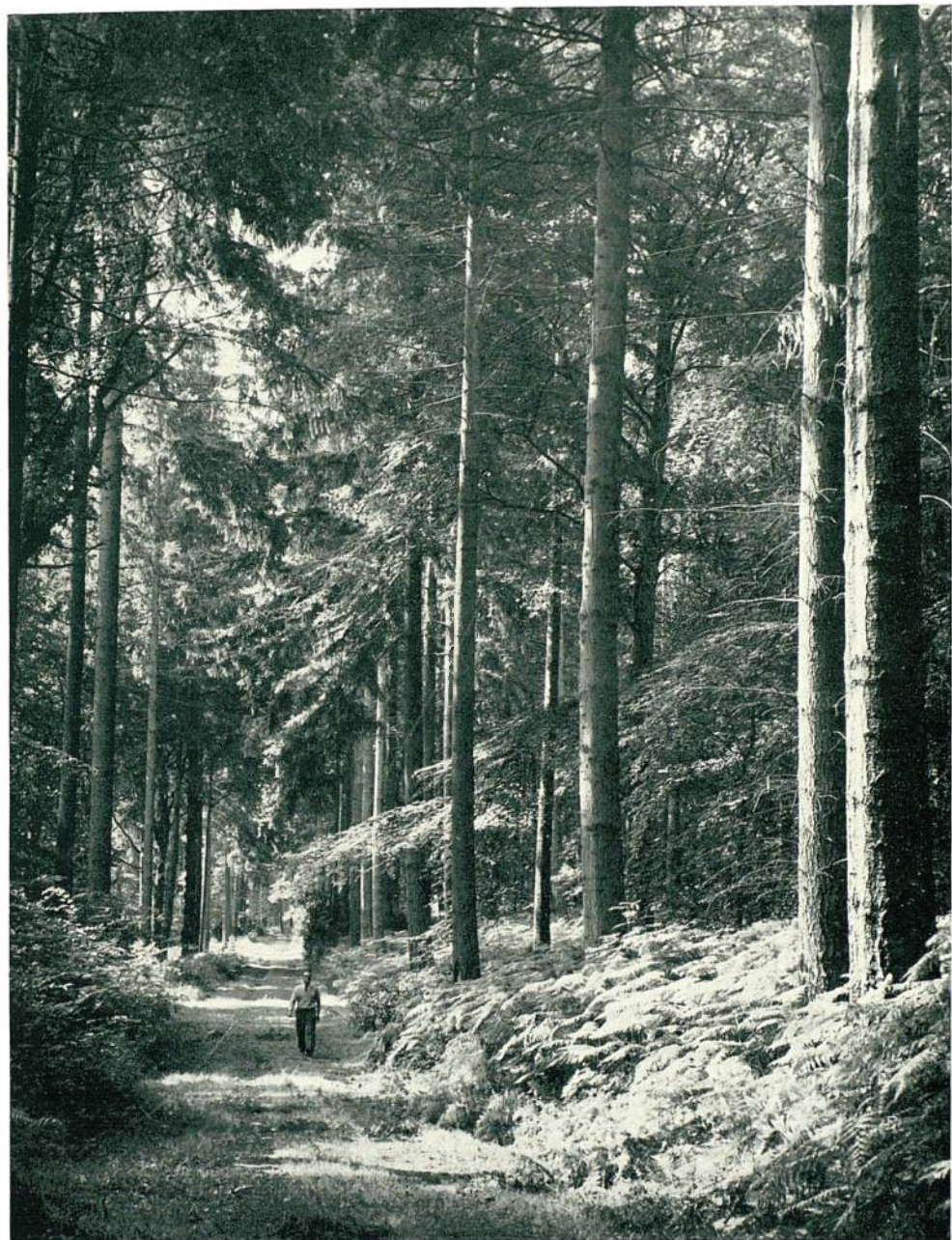


PLATE 1. A ride through a sixty-year-old Douglas fir plantation in the Parkhill Enclosure, Dean Forest Park.

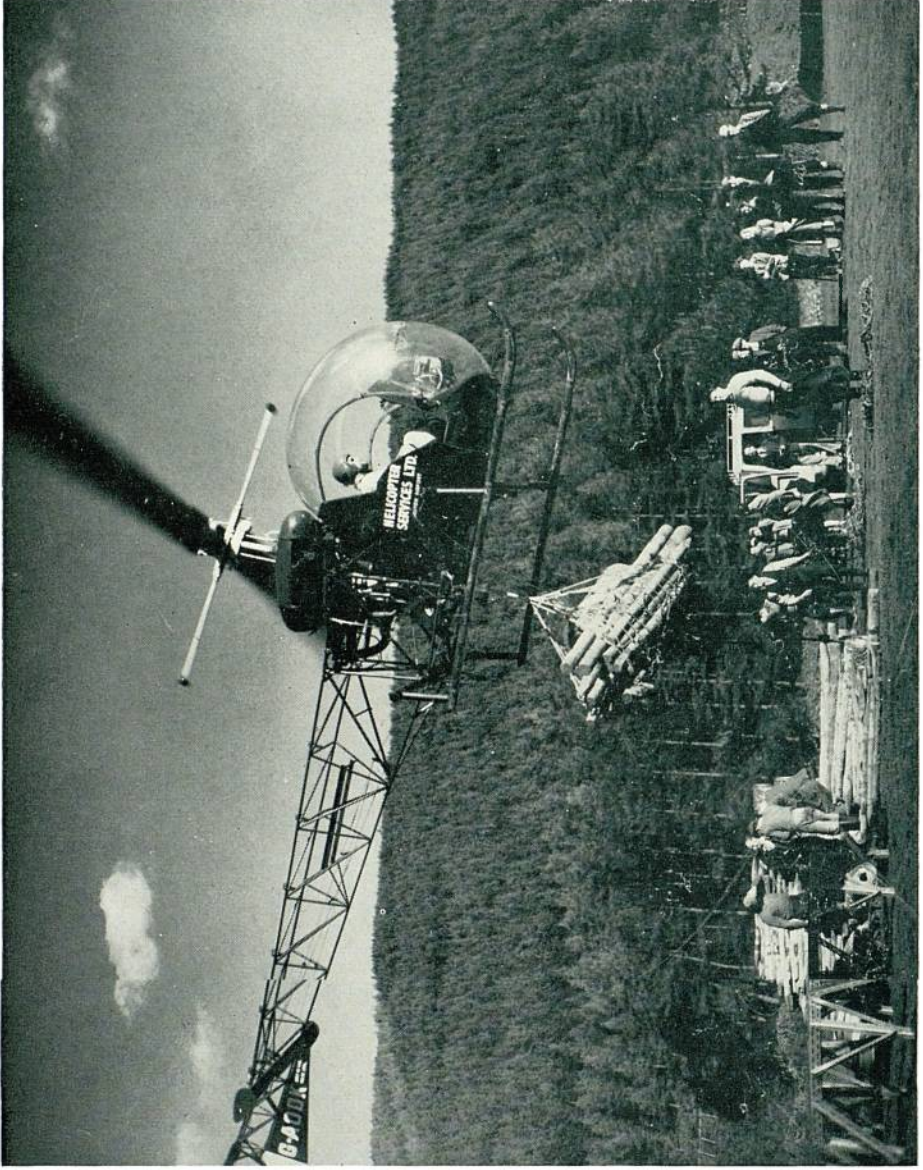


PLATE 2. Helicopter lifting fencing stakes to a mountainside in Ennerdale Forest, Cumberland.

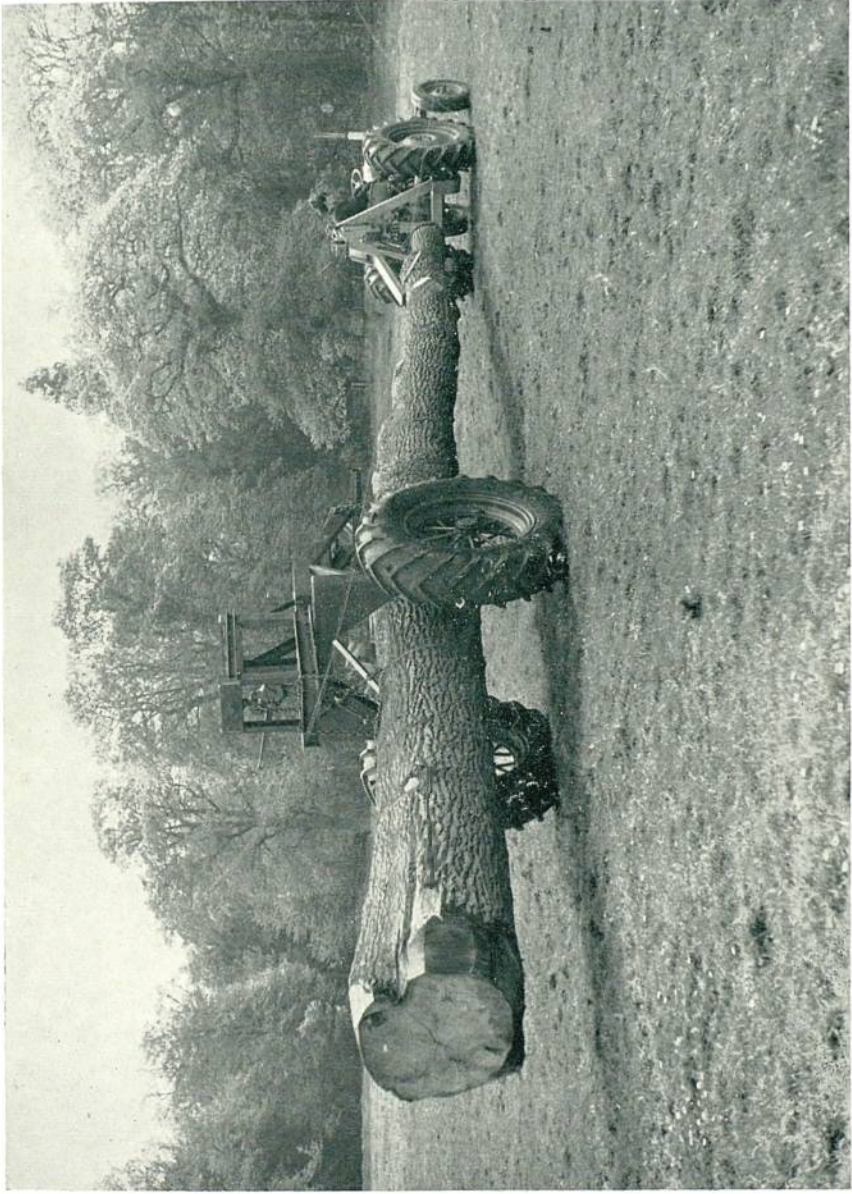


PLATE 3. Self-loading arch for timber transport, developed by Forestry Commission engineers.



PLATE 4. Tree bicycle used to climb tall trees for seed collection; the climber carries a safety line and harness.

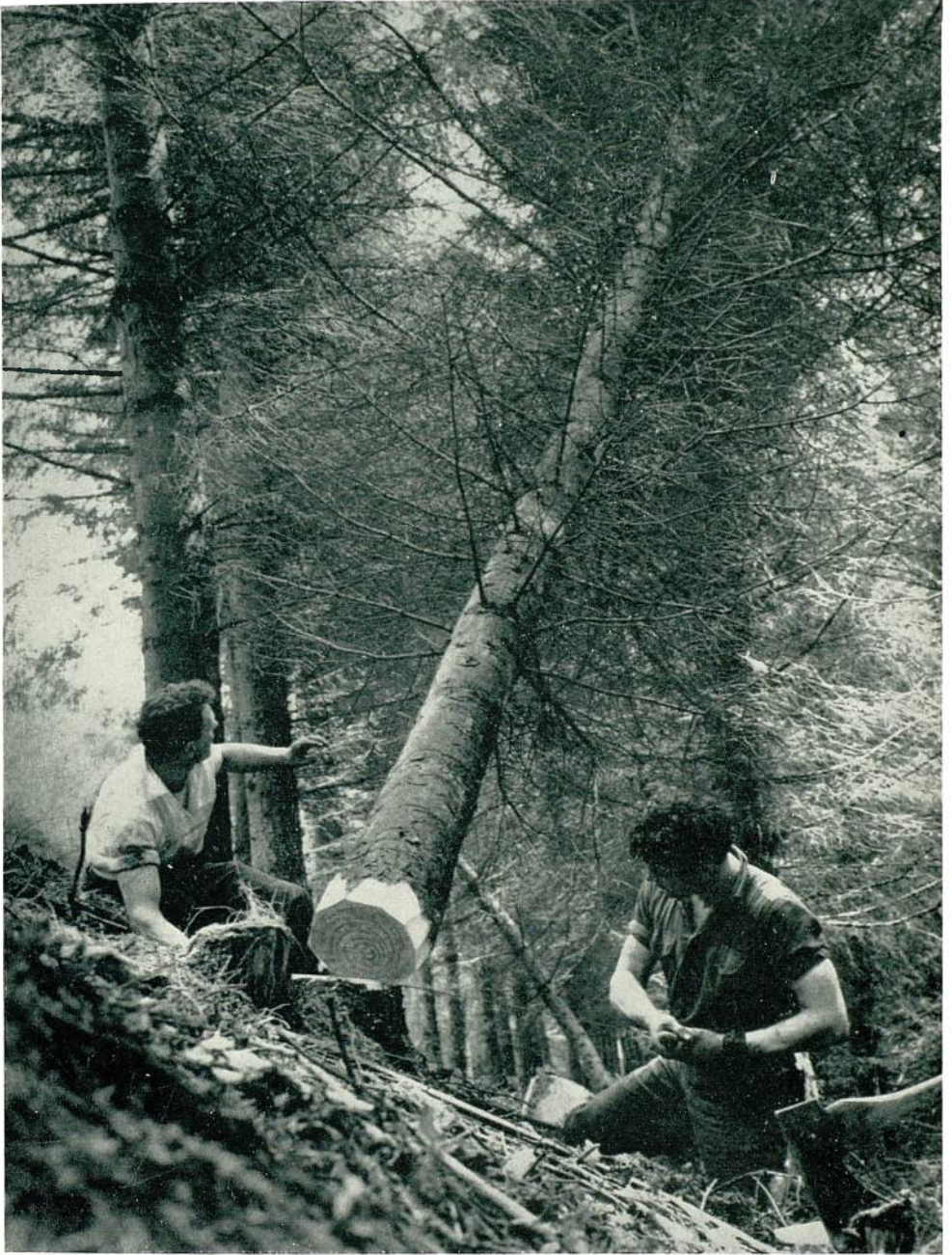


PLATE 5. Felling a spruce tree for pulpwood, in North Wales.

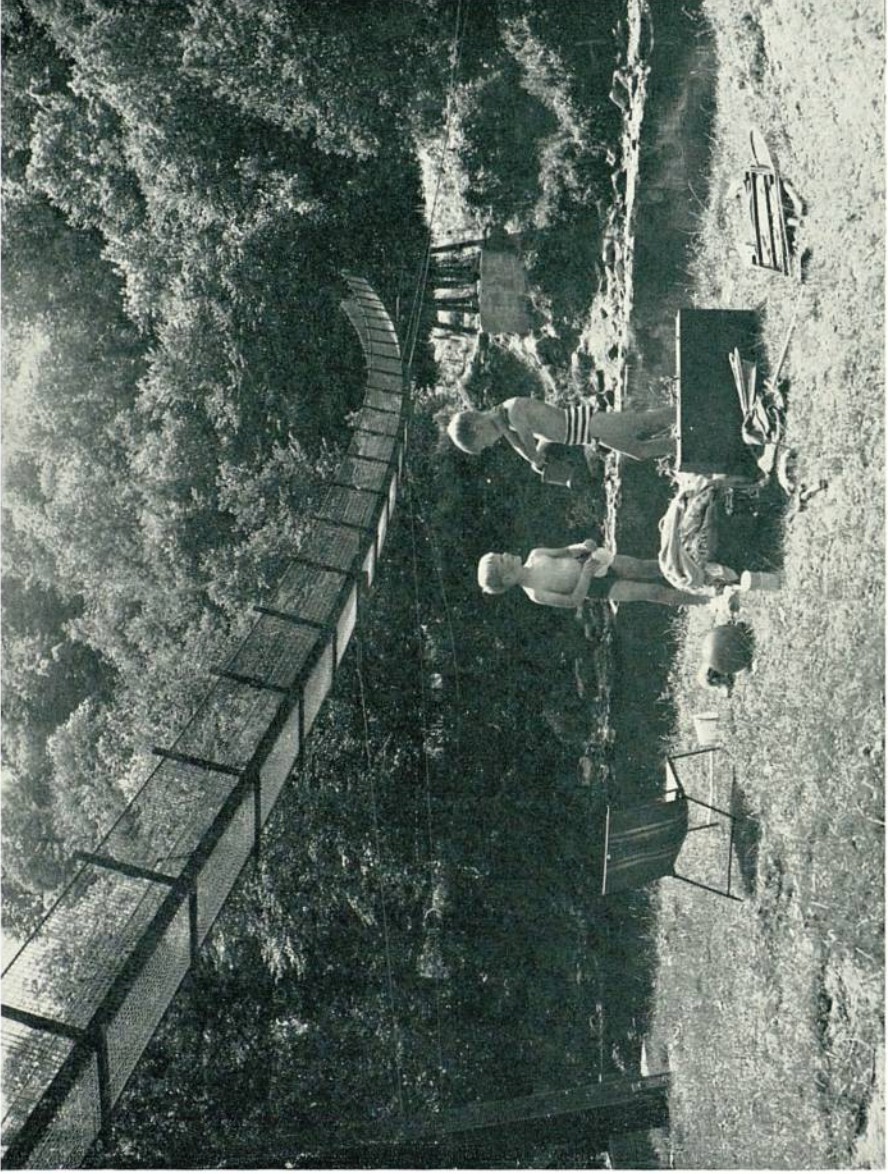


PLATE 6. Suspension footbridge built by Forestry Commission engineers across the River Wye in the Dean Forest Park, near Symonds Yat.

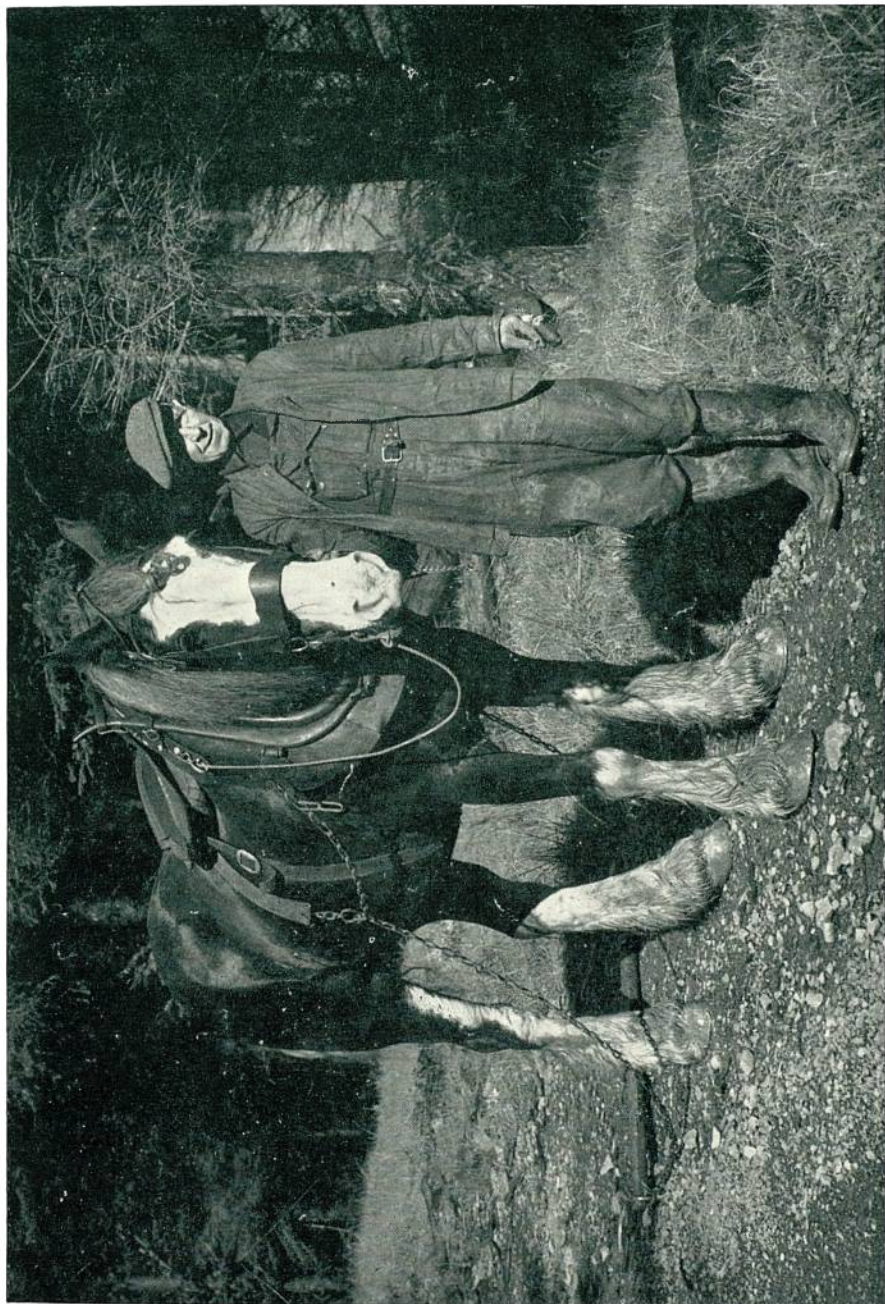


PLATE 7. A horseman in the Forest of Ae near Dumfries, South Scotland; horses continue in general use for hauling out thinnings.



PLATE 8. A magnificent ash stem in the Highmeadow Woods, Monmouthshire.

ESTIMATED AREA PLANTED BY PRIVATE OWNERS
IN THE FOREST YEAR 1962

Table 25

Acres

	Great Britain	England	Scotland	Wales
Total	35,119	17,498	14,157	3,464
In Dedicated Woodlands	24,175	10,923	10,330	2,922
In Approved Woodlands	4,444	2,877	1,399	168
With Small Woods Planting Grants	4,171	2,461	1,377	333
Without Grants (estimated)	2,329	1,237	1,051	41

VOLUME OF TIMBER LICENSED FOR FELLING AND THINNING
ON PRIVATE ESTATES IN THE FOREST YEAR 1962

Table 26

	Great Britain	England	Scotland	Wales
Total Volume (million hoppus feet)... ..	18.1	11.7	5.3	1.1
Conifer	7.3	2.7	4.2	.4
Broadleaved... ..	10.8	9.0	1.1	.7
Number of licences issued	2,894	2,215	456	223

AREA LICENSED FOR CLEAR FELLING ON PRIVATE ESTATES
IN THE FOREST YEAR 1962

Table 27

Acres

	Great Britain	England	Scotland	Wales
Total	1,205	856	256	93
Conditional licences	661	426	169	66
Unconditional licences	544	430	87	27

LAND USE AND PLANTING BY FORESTS—ENGLAND, 1962

Note:

In Tables 28-30, former Crown Woods are indicated by asterisks, *, and new forests begun in 1962, by a dagger sign, †.

Table 28

Acres

	Land use at 30th September, 1962				Planted in forest year 1962		
	Total	Under plantations	To be planted	Agricultural and other land	Total	Afforested	Replanted
NORTH WEST ENGLAND CONSERVANCY:							
TOTAL	122,040	88,394	16,899	16,747	2,684	1,244	1,440
Arden, Warwick & Worcs	1,287	709	578	—	81	—	81
Bagot, Staffs	1,395	1,078	317	—	77	—	77
Bawtry, Notts	586	497	29	60	8	—	8
Blengdale, Cumberland ...	1,283	1,203	11	69	—	—	—
Bowland, Lancs & Yorks...	943	890	12	41	90	75	15
Cannock, Staffs	6,902	6,349	505	48	111	—	111
Charnwood, Leicester ...	275	275	—	—	—	—	—
Corvedale, Salop	707	420	274	13	—	—	—
Cotgrave, Notts & Leicester	529	483	45	1	7	6	1
Dalton, Westmorland & Lancs	1,208	1,124	35	49	57	—	57
Delamere, Cheshire*	2,393	2,249	100	44	41	—	41
Dunnerdale, Cumberland and Lancashire ⁽¹⁾ ...	2,355	1,954	113	288	66	—	66
Dunsmore, Warwick ...	496	121	375	—	41	—	41
Ennerdale, Cumberland ...	8,782	3,044	999	4,739	95	95	—
Foremark Woods, Derby...	571	334	234	3	46	—	46
Gisburn, Yorks	3,477	3,041	335	101	112	112	—
Goyt, Derbyshire and Cheshire†	2,341	192	1,399	750	—	—	—
Greystoke, Cumberland ...	2,919	2,127	561	231	121	89	32
Grizedale, Lancs	7,361	6,268	287	806	114	—	114
Haberley, Salop	1,007	895	92	20	44	7	37
Haslingden, Lancs	935	101	647	187	38	38	—
Haughmond, Salop ⁽²⁾ ...	1,538	587	925	26	59	28	31
Hope, Derby	2,988	855	160	1,973	25	25	—
Inglewood, Cumberland ...	1,782	1,272	456	54	112	65	47
Kershope, Cumberland ...	11,461	10,000	585	876	210	200	10
Kinver, Staffs	740	714	—	26	2	1	1
Launde, Leicester & Rutland	894	290	604	—	52	—	52
Lindale, Lancs & Westmorland	2,854	1,171	1,162	521	138	83	55
Long Mynd, Salop	931	809	74	48	3	—	3
Longtown, Cumberland ⁽³⁾ ...	672	412	260	—	9	—	9
Matlock, Derby	1,629	1,138	473	18	126	53	73
Miterdale, Cumberland ...	1,785	930	398	457	67	67	—
Mortimer, Hereford & Salop	8,638	8,302	49	287	56	—	56
Oakamoor, Staffs	1,168	819	349	—	72	—	72
Packington, Warwick & Leicester... ..	794	442	352	—	80	—	80
Sherwood, Derby, Yorks & Notts	15,617	13,436	1,572	609	142	12	130
Spadeadam, Cumberland...	10,287	4,920	2,009	3,358	273	273	—
Swynnerton, Staffs	2,533	2,327	193	13	51	10	41
Thornthwaite, Cumberland	6,320	4,988	310	1,022	58	5	53
Walcot, Salop	1,657	1,628	20	9	—	—	—

Notes ⁽¹⁾ Formerly known as Hardknott.

⁽²⁾ Haughmond includes Causeway Wood.

⁽³⁾ Longtown includes Walton Woods.

Table 28—continued

Acres

	Land use at 30th September, 1962				Planted in forest year 1962		
	Total	Under plantations	To be planted	Agricultural and other land	Total	Afforested	Replanted
NORTH EAST ENGLAND CONSERVANCY:							
TOTAL	241,089	155,673	25,537	59,879	4,413	3,077	1,336
Allendale, Northumberland	591	235	352	4	47	—	47
Allerston, Yorks	36,717	25,059	992	10,666	664	603	61
Chillingham, Northumberland	2,875	883	1,259	733	50	—	50
Chopwell, Durham*	2,255	1,567	576	112	28	—	28
Fountains, Yorks	1,389	1,000	382	7	166	51	115
Hambleton, Yorks	18,613	11,215	6,497	901	910	553	357
Hamsterley, Durham	6,515	5,513	674	328	9	—	9
Harwood, Northumberland	8,427	7,681	101	645	—	—	—
Jervaulx, Yorks	2,065	1,398	663	4	63	—	63
Kidland, Northumberland	5,547	2,912	2,004	631	329	329	—
Kielder, Northumberland	72,459	45,941	2,769	23,749	714	711	3
Knaresborough, Yorks	2,103	1,323	749	31	178	62	116
Redesdale, Northumberland	17,252	12,256	60	4,936	192	192	—
Rothbury, Northumberland	4,395	3,354	656	385	126	87	39
Selby, Yorks	1,685	1,170	502	13	33	—	33
Slaley, Northumberland & Durham	2,330	1,815	443	72	75	65	10
South Pennines, Yorks	3,100	269	2,668	163	43	43	—
South Yorkshire, Yorks	3,732	2,051	1,616	65	134	—	134
The Stang, Yorks	1,599	1,108	355	136	—	—	—
Wark, Northumberland	36,351	23,398	236	12,717	286	286	—
Weardale, Durham	4,393	832	131	3,430	47	47	—
Widehaugh, Northumberland	70	—	—	70	—	—	—
Wolds, Yorks	2,266	1,725	519	22	162	48	114
Wynyard, Durham	1,726	964	755	7	53	—	53
York East, Yorks	1,764	1,421	294	49	49	—	49
York West, Yorks	870	583	284	3	55	—	55
EAST ENGLAND CONSERVANCY:							
TOTAL	116,990	96,822	11,629	8,539	2,541	347	2,194
Aldwood, Suffolk ⁽¹⁾	9,748	8,419	128	1,201	96	—	96
Amphill, Beds	1,584	987	417	180	41	—	41
Bardney, Lincs	4,953	3,979	844	130	144	—	144
Beechwood, Beds & Herts	831	573	258	—	30	—	30
Bernwood, Oxon & Bucks	2,326	1,363	963	—	99	—	99
Bramfield, Herts	1,190	772	396	22	62	—	62
Burwell, Lincs	761	708	52	1	7	—	7
Chilterns, Bucks, Oxon and Herts	4,954	3,616	1,279	59	300	—	300
Ditton, Cambs and Suffolk	580	386	193	1	36	—	36
Hazelborough, Bucks & Northants*	2,078	1,936	65	77	6	—	6
Honeywood, Essex	1,134	594	525	15	80	—	80
Huntingdon, Hunts, Cambs and Beds	1,095	397	697	1	47	—	47
Kesteven, Lincs & Rutland	5,275	4,091	941	243	225	22	203
The King's Forest, Suffolk	5,952	5,492	362	98	135	75	60
Laughton, Lincs	2,237	2,168	7	62	—	—	—
Lavenham, Suffolk	893	589	303	1	60	4	56
Lynn, Norfolk	2,701	2,178	261	262	118	79	39
Navestock, Essex	409	173	236	—	30	—	30

Notes

⁽¹⁾ Aldwood includes the former Waveney Forest.

Table 28—continued

Acres

	Land use at 30th September, 1962				Planted in forest year 1962		
	Total	Under plantations	To be planted	Agricultural and other land	Total	Afforested	Replanted
Pytchley, Northants ...	495	472	21	2	52	—	52
Rockingham, Northants and Rutland ...	6,343	5,259	722	362	151	—	151
Salcey, Bucks & Northants*	1,468	1,279	177	12	30	—	30
Swaffham, Norfolk ...	3,810	3,286	12	512	—	—	—
Thetford Chase, Norfolk & Suffolk ...	42,098	36,369	1,009	4,720	370	121	249
Walden, Essex and Herts ...	1,303	785	492	26	100	6	94
Wensum, Norfolk ...	5,213	4,383	528	302	124	33	91
Whaddon Chase, Bucks ...	910	564	342	4	—	—	—
Wigsley, Lincs & Notts ...	1,774	1,607	117	50	46	—	46
Willingham, Lincs ...	2,932	2,713	129	90	85	7	78
Yardley Chase, Beds & Northants ...	1,943	1,684	153	106	67	—	67
SOUTH EAST ENGLAND CONSERVANCY:							
TOTAL ...	65,041	49,824	12,693	2,524	1,907	139	1,768
Abinger, Surrey ...	1,387	752	474	161	43	—	43
Alice Holt, Hants & Surrey*	2,411	2,001	113	297	56	—	56
Alton, Hants ...	1,353	1,189	59	105	49	49	—
Andover, Hants ...	1,778	1,350	281	147	82	—	82
Arundel, Sussex ...	2,553	2,480	41	32	57	—	57
Ashley Hill, Berks ...	401	388	4	9	13	13	—
Badbury, Berks ...	578	382	196	—	45	—	45
Basing, Hants ...	318	230	88	—	—	—	—
Bedgebury, Kent & Sussex*	2,424	2,193	16	215	66	—	66
Bere, Hants* ...	1,971	1,525	420	26	38	—	38
Bramshill, Berks & Hants	4,611	3,930	234	447	85	62	23
Brightling, Sussex... ..	2,116	1,286	809	21	96	—	96
Bucklebury, Berks & Hants ...	1,734	683	1,048	3	103	—	103
Challock, Kent ...	2,339	2,057	271	11	107	—	107
Chiddingfold, Surrey & Sussex ...	2,249	2,226	16	7	31	—	31
Corhampton, Hants ...	276	203	73	—	—	—	—
Effingham, Surrey ...	639	427	211	1	29	—	29
Friston, Sussex ...	1,986	1,723	238	25	—	—	—
Gravetye, Sussex, Kent & Surrey ...	1,119	451	193	475	18	—	18
Havant, Hants & Sussex...	1,343	643	698	2	14	—	14
Hemsted, Kent ...	1,024	991	—	33	23	—	23
Hursley, Hants ...	4,484	2,779	1,698	7	155	—	155
Lyminge, Kent ...	2,652	2,333	293	26	115	7	108
Maresfield, Kent & Sussex	1,801	883	917	1	54	—	54
Micheldever, Hants ...	3,044	2,843	149	52	40	8	32
Mildmay, Kent & Surrey	1,559	737	812	10	125	—	125
Orlestone, Kent ...	1,404	1,102	300	2	51	—	51
Queen Elizabeth Forest, Hants & Sussex ...	3,078	2,363	581	134	—	—	—
Rochester, Kent ...	617	219	375	23	24	—	24
Rogate, Sussex ...	891	581	225	85	42	—	42
St. Leonards, Sussex ...	1,511	798	666	47	83	—	83
Shipbourne, Kent... ..	470	388	80	2	6	—	6
Slindon, Sussex ...	4,996	4,229	705	62	61	—	61

Table 28—continued

Acres

	Land use at 30th September, 1962				Planted in forest year 1962		
	Total	Under plantations	To be planted	Agricultural and other land	Total	Afforested	Replanted
Southwater, Sussex ...	623	542	77	4	34	—	34
Vinehall, Sussex ...	1,421	1,268	142	11	70	—	70
Wilmington, Sussex ...	881	843	—	38	35	—	35
Winterfold, Surrey ...	381	350	31	—	26	—	26
Witley, Surrey ...	616	456	159	1	31	—	31
Woking Office Grounds ...	2	—	—	2	—	—	—
SOUTH WEST ENGLAND CONSERVANCY:							
TOTAL	88,023	65,921	17,022	5,080	2,597	758	1,839
Bampton, Devon ...	876	481	394	1	53	—	53
Blandford, Dorset ...	2,813	2,181	419	213	127	65	62
Bodmin, Cornwall ⁽¹⁾ ...	6,225	4,663	1,224	338	219	112	107
Bovey, Devon ...	1,276	425	822	29	97	11	86
Bradon, Wilts ...	1,723	1,363	358	2	84	—	84
Brendon, Somerset ...	3,477	2,761	422	294	40	30	10
Bristol, Somerset ...	661	618	29	14	30	—	30
Charmouth, Dorset & Devon ...	1,206	920	243	43	55	10	45
Cotswold, Gloucester ...	1,643	893	125	625	46	19	27
Cranborne Chase, Dorset & Wilts ...	1,751	1,508	226	17	35	—	35
Dartmoor, Devon ...	3,792	3,168	16	608	—	—	—
Dymock, Gloucester & Hereford ...	1,291	1,219	57	15	46	—	46
Eggesford, Devon ...	1,207	1,138	51	18	21	—	21
Exeter, Devon ...	4,715	4,102	574	39	102	61	41
Halwill, Devon ...	6,233	5,243	321	669	94	66	28
Hartland, Devon & Corn- wall ...	2,337	1,977	244	116	65	52	13
Hereford, Hereford & Gloucester ...	3,336	1,946	1,367	23	104	—	104
Honiton, Devon and Som- erset ...	2,462	1,482	960	20	101	52	49
Land's End, Cornwall ...	996	532	459	5	48	42	6
Mendip, Somerset ⁽²⁾ ...	2,809	2,426	302	81	70	—	70
Molton Woods, Devon ...	1,125	566	547	12	85	9	76
Neroche, Somerset ...	3,051	1,576	818	657	33	—	33
Pershore, Worcs ...	459	270	188	1	30	1	29
Plym, Devon ...	2,424	1,955	462	7	62	—	62
Poorstock, Dorset & Somerset ...	2,514	1,213	1,301	—	180	—	180
Quantock, Somerset ...	2,767	2,259	160	348	45	—	45
Salisbury, Hants & Wilts...	2,947	1,934	1,012	1	116	—	116
Savernake, Wilts & Berks	6,755	5,228	1,171	356	154	—	154
Stratton, Cornwall ...	646	272	374	—	55	5	50
Wareham, Dorset... ..	8,714	6,885	1,565	264	275	208	67
Westonbirt, Gloucester ⁽³⁾	423	318	—	105	—	—	—
Wilsey Down, Cornwall ...	1,547	1,245	239	63	28	15	13
Wyre, Worcs & Salop ...	3,822	3,154	572	96	97	—	97

Notes:

⁽¹⁾ Bodmin includes St. Austell.⁽²⁾ Mendip includes Selwood.⁽³⁾ Westonbirt was formerly part of Bradon.

Table 28—continued

Acres

	Land use at 30th September, 1962				Planted in forest year 1962		
	Total	Under plantations	To be planted	Agricultural and other land	Total	Afforested	Replanted
NEW FOREST:							
TOTAL	78,230	35,801	2,277	40,152	758	428	330
Brighstone, Isle of Wight...	1,717	1,414	113	190	36	36	—
Combley, Isle of Wight ...	1,032	586	436	10	20	—	20
New Forest, Hants* ...	65,710	25,778	1,167	38,765	538	361	177
Osborne, Isle of Wight ...	241	230	6	5	—	—	—
Parkhurst, Isle of Wight*	1,488	1,079	131	278	36	—	36
Ringwood, Dorset & Hants	7,399	6,213	385	801	114	31	83
Shalfleet, Isle of Wight ...	643	501	39	103	14	—	14
DEAN FOREST:							
TOTAL	27,281	22,167	1,496	3,618	599	110	489
Dean Forest, Gloucester, Hereford & Monmouth*	25,373	20,626	1,186	3,561	510	35	475
Tidenham Chase, Gloucester	1,908	1,541	310	57	89	75	14

LAND USE AND PLANTING BY FORESTS—SCOTLAND, 1962

Table 29

Acres

	Land use at 30th September, 1962				Planted in forest year 1962		
	Total	Under plantations	To be planted	Agricultural and other land	Total	Afforested	Replanted
NORTH SCOTLAND CONSERVANCY:							
TOTAL ...	540,423	166,976	47,111	326,336	10,054	6,801	3,253
Achnashellach, Ross ...	20,427	1,852	747	17,828	206	186	20
Affric, Inverness & Ross	63,820	9,037	3,806	50,977	600	—	600
Aigas, Inverness ...	1,715	1,098	514	103	150	80	70
Ardross, Ross ...	6,598	5,615	46	937	133	28	105
Assich, Nairn ...	1,326	1,076	65	185	50	10	40
Balblair, Sutherland & Ross ...	13,959	4,825	1,410	7,724	325	275	50
Boblainy, Inverness ...	4,857	4,068	90	699	20	—	20
Borgie, Sutherland ...	2,705	1,468	—	1,237	33	33	—
Ceannacroc, Inverness ...	13,606	2,599	1,586	9,421	150	65	85
Clach Liath, Ross ...	1,875	1,676	158	41	21	7	14
Clunes, Inverness ...	7,261	2,616	63	4,582	116	80	36
Craig Phadrig, Inverness ...	211	200	1	10	—	—	—
Creag nan Eun, Inverness	2,139	1,454	121	564	40	—	40
Culloden, Inverness ...	2,447	2,324	100	23	10	—	10
Dornoch, Sutherland ...	3,972	2,221	531	1,220	274	—	274
Dunnet, Caithness ...	862	315	480	67	9	9	—
Eilanreach, Inverness ...	922	805	32	85	—	—	—
Farigaig, Inverness ...	7,920	3,079	1,780	3,061	210	52	158
Ferness, Nairn ...	2,261	1,858	10	393	—	—	—
Findon, Ross ...	2,378	2,228	29	121	7	3	4
Fiunary, Argyll ...	18,390	5,760	607	12,023	250	200	50
Glen Garry, Inverness ...	23,526	5,964	377	17,185	197	107	90
Glen Hurich, Argyll ...	15,180	3,475	326	11,379	80	35	45
Glen Loy, Inverness ...	2,608	1,940	106	562	—	—	—
Glen Righ, Inverness ...	5,843	2,687	114	3,042	57	57	—
Glen Shiel, Ross ...	3,651	763	86	2,802	—	—	—
Glen Urquhart, Inverness	19,420	5,303	1,360	12,757	400	278	122
Helmsdale, Sutherland† ...	515	58	421	36	53	53	—
Inchnacardoch, Inverness	9,545	3,070	900	5,575	200	200	—
Inshriach, Inverness ...	11,557	5,447	1,781	4,329	531	434	97
Inverinate, Ross ...	1,234	992	30	212	—	—	—
Kessock, Ross ...	1,666	1,343	10	313	8	—	8
Kilcoy, Ross ...	3,794	3,132	165	497	12	—	12
Lael, Ross ...	3,760	2,533	55	1,172	101	101	—
Leanachan, Inverness ...	30,498	5,375	3,918	21,205	524	524	—
Millbuie, Ross ...	7,336	6,745	23	568	18	18	—
Morangie, Ross ...	8,273	6,159	514	1,600	260	85	175
Mull, Argyll ...	26,694	6,899	5,347	14,448	600	494	106
Naver, Sutherland ...	16,944	1,719	2,715	12,510	450	450	—
Nevis, Inverness ...	7,659	1,201	314	6,144	124	124	—
North Ströme, Ross ...	1,969	834	16	1,119	—	—	—
Oykell, Ross & Sutherland	4,462	2,834	883	745	325	260	65
Portclair, Inverness ...	5,500	2,394	—	3,106	41	—	41
The Queen's Forest, Inverness ...	12,475	3,026	341	9,108	102	23	79
Raasay, Isle of Raasay, Inverness ...	749	570	19	160	10	7	3
Ratagan, Inverness & Ross	5,831	2,081	380	3,370	127	127	—
Rumster, Caithness ...	3,491	1,116	383	1,992	64	42	22
Shin, Sutherland ...	45,463	5,817	3,282	36,364	663	616	47
Skye, Inverness ...	21,436	3,689	2,623	15,124	413	413	—
Slattadale, Ross ...	2,149	1,250	389	510	76	76	—

Table 29—continued

Acres

	Land use at 30th September, 1962				Planted in forest year 1962		
	Total	Under plantations	To be planted	Agricultural and other land	Total	Afforested	Replanted
South Laggan, Inverness...	4,189	1,238	122	2,829	78	78	—
South Strome, Ross ...	3,926	1,810	945	1,171	252	252	—
Strath Conon, Ross ...	3,199	2,468	48	683	80	—	80
Strath Dearn, Inverness ...	8,981	3,673	680	4,628	400	400	—
Strath Mashie, Inverness...	4,814	2,878	814	1,122	390	86	304
Strath Nairn, Inverness ...	2,599	1,464	90	1,045	104	99	5
Strathy, Sutherland ...	937	332	364	241	—	—	—
Sunart, Argyll & Inverness ...	9,857	2,570	2,061	5,226	210	130	80
Torrachilty, Ross ...	18,994	5,907	2,933	10,154	500	204	296
Hoy Experiments, Orkney	32	32	—	—	—	—	—
Lewis Experiments, Isle of Lewis, Ross ...	16	14	—	2	—	—	—
EAST SCOTLAND CONSERVANCY:							
TOTAL ...	294,915	166,122	39,232	89,561	7,720	5,793	1,927
Allan, Perth ...	11,926	3,150	2,450	6,326	286	286	—
Alltcaileach, Aberdeen ...	3,804	3,641	—	163	6	—	6
Aultmore, Banff ...	6,721	1,688	3,882	1,151	602	574	28
Bennachie, Aberdeen ...	6,263	3,612	263	2,388	230	75	155
The Bin, Aberdeen & Banff	8,685	6,977	935	773	152	83	69
Blackcraig, Perth ...	3,437	2,289	776	372	286	286	—
Blackhall, Kincardine & Aberdeen ...	4,865	3,876	839	150	326	74	252
Blairadam, Fife & Kinross	2,791	2,234	449	108	110	52	58
Carden, Fife ...	547	538	—	9	—	—	—
Clashindarroch, Aberdeen	18,466	12,175	846	5,445	352	352	—
Craigvinean, Perth ...	4,285	3,520	256	509	—	—	—
Culbin, Moray & Nairn ...	7,738	7,337	89	312	27	21	6
Cushnie, Aberdeen ...	3,287	723	1,511	1,053	167	95	72
Delgaty, Aberdeen & Banff	2,636	2,170	448	18	220	84	136
Drummond Hill, Perth ...	8,288	5,024	364	2,900	302	158	144
Drumtochty, Kincardine...	9,190	5,692	883	2,615	352	296	56
Durris, Aberdeen & Kincardine ...	6,733	4,947	1,204	582	312	199	113
Edensmuir, Fife ...	1,951	1,727	71	153	30	—	30
Elchies, Moray ...	4,407	2,342	1,459	606	364	364	—
Faskally, Perth ...	1,061	472	464	125	75	—	75
Fetteresso, Kincardine ...	8,458	6,472	146	1,840	241	239	2
Fonab, Perth ...	2,248	1,514	192	542	134	70	64
Forest of Deer, Aberdeen	4,278	2,928	943	407	250	208	42
Glendevon, Perth & Kinross ...	1,032	916	74	42	4	4	—
Glendoll, Angus ...	3,713	1,247	40	2,426	62	62	—
Glenarrochy, Perth ...	5,167	1,282	2,992	893	166	166	—
Glenisla, Angus & Perth	11,327	4,130	1,038	6,159	312	268	44
Glenlivet, Banff ...	8,692	7,386	568	738	424	414	10
Glenprosen, Angus ...	8,326	766	1,483	6,077	180	180	—
Hallyburton, Angus & Perth ...	2,122	2,057	16	49	22	—	22
Inglismaldie, Angus & Kincardine ...	1,710	1,670	14	26	139	105	34
Keillour, Perth ...	2,037	1,815	130	92	56	38	18
Kemnay, Aberdeen ...	1,398	1,374	3	21	—	—	—
Kindrogan, Perth† ...	2,825	230	2,321	274	62	49	13
Kinfauns, Perth ...	1,119	1,115	—	4	6	—	6

Table 29—continued

Acres

	Land use at 30th September, 1962				Planted in forest year 1962		
	Total	Under plantations	To be planted	Agricultural and other land	Total	Afforested	Replanted
Kirkhill, Aberdeen ...	2,984	2,808	26	150	111	55	56
Ledmore, Perth ...	117	—	—	117	—	—	—
Lossie, Moray ...	1,904	1,673	—	231	—	—	—
Midmar, Aberdeen ...	1,442	1,267	102	73	56	56	—
Monaughty, Moray ...	4,253	3,895	152	206	35	—	35
Montreathmont, Angus ...	2,782	2,734	5	43	4	—	4
Newton Nursery, Moray... Newtyle, Moray ...	175 4,009	— 2,751	17 344	158 914	— —	— —	— —
Pitfichie, Aberdeen ...	6,658	5,263	69	1,326	28	—	28
Pitmedden, Fife & Perth...	2,046	1,763	177	106	49	37	12
Rannoch, Perth ...	47,455	5,117	8,562	33,776	706	506	200
Rosarie, Banff ...	6,475	5,522	162	791	8	—	8
Roseisle, Moray ...	2,083	2,026	—	57	63	63	—
Scootmore, Moray ...	821	817	—	4	—	—	—
Speymouth, Moray & Banff	11,451	10,203	651	597	101	15	86
Strathord, Perth ...	1,622	1,566	49	7	33	—	33
Teindland, Moray ...	2,992	2,474	88	430	23	15	8
Tentsmuir, Fife ...	4,033	3,607	22	404	44	44	—
Tornashean, Aberdeen ...	8,637	2,391	1,657	4,589	202	200	2
Whitehaugh, Aberdeen ...	1,443	1,209	—	234	—	—	—
SOUTH SCOTLAND CONSERVANCY:							
TOTAL	292,434	155,866	49,298	87,270	10,083	9,425	658
Forest of Ae, Dumfries ...	13,674	12,836	80	758	145	122	23
Arcleoch, Ayr ...	4,235	1,613	2,190	432	403	403	—
Auchenroddan, Dumfries	730	683	29	18	—	—	—
Bareach, Wigtown ...	2,715	1,536	974	205	250	243	7
Brownmoor, Dumfries ...	906	851	42	13	102	74	28
Cairn Edward, Kirkcudbright ...	28,605	17,458	5,140	6,007	928	928	—
Cardrona, Peebles ...	1,771	1,513	—	258	48	48	—
Carrick, Ayr ...	35,619	8,883	1,251	25,485	425	425	—
Castle O'er, Dumfries & Selkirk ...	9,394	7,882	676	836	101	101	—
Changue, Ayr ...	3,127	1,858	456	813	30	30	—
Clydesdale, Lanark ...	1,969	698	1,072	199	200	163	37
Corriedoo, Kirkcudbright	1,045	995	1	49	1	1	—
Craik, Roxburgh & Selkirk	4,926	4,222	181	523	200	200	—
Dalbeattie, Kirkcudbright	6,274	5,781	69	424	209	207	2
Dalmacallan, Dumfries ...	3,436	2,811	485	140	145	105	40
Dreva, Peebles ...	1,354	1,194	133	27	129	67	62
Dundeugh, Kirkcudbright	5,966	4,741	260	965	250	250	—
Duns, Berwick ...	1,390	990	386	14	88	67	21
Eddleston Water, Peebles	1,054	806	168	80	248	169	79
Edgarhope, Berwick & Midlothian ...	2,018	1,337	177	504	26	26	—
Elibank & Traquair, Selkirk & Peebles ...	6,434	4,241	897	1,296	200	138	62
Fleet, Kirkcudbright ...	1,383	1,249	11	123	17	—	17
Garcrogo, Kirkcudbright	1,914	1,618	—	296	—	—	—
The Garraries, Kirkcudbright ...	7,712	2,498	1,487	3,727	468	468	—
Glenbreck, Peebles† ...	6,517	7	1,779	4,731	—	—	—
Glengap, Kirkcudbright ...	2,265	2,155	26	84	35	21	14
Glentress, Peebles...	2,355	1,968	4	383	6	1	5

Table 29—continued

Acres

	Land use at 30th September, 1962				Planted in forest year 1962		
	Total	Under plantations	To be planted	Agricultural and other land	Total	Afforested	Replanted
Glen Trool, Kirkcudbright & Ayr	51,357	17,657	10,230	23,470	1,508	1,508	—
Greskine, Dumfries	5,109	2,758	2,061	290	432	414	18
Kilgrammie, Ayr	570	563	1	6	—	—	—
Kilsture, Wigtown	3,005	923	1,697	385	155	155	—
Kirroughtree, Kirkcudbright	12,637	7,048	2,594	2,995	498	473	25
Kyle, Ayr	2,228	443	1,586	199	313	313	—
Laurieston, Kirkcudbright	4,575	4,379	46	150	220	220	—
Mabie, Kirkcudbright & Dumfries	4,870	3,228	1,361	281	50	17	33
Moffat Water, Dumfries†	5,095	668	2,644	1,783	94	94	—
Newcastleton, Roxburgh & Dumfries	7,754	6,842	522	390	513	512	1
Penninghame, Wigtown ...	6,313	3,573	1,291	1,449	305	236	69
Saltoun, East Lothian & Midlothian	1,198	596	545	57	50	—	50
Selm Muir, Midlothian & West Lothian	1,682	874	758	50	205	205	—
Stenton, East Lothian & Berwick	1,318	850	403	65	53	44	9
Upper Nithsdale, Ayr & Dumfries	3,217	782	2,117	318	253	253	—
Watermeetings, Lanark ...	3,532	1,385	661	1,486	253	253	—
Wauchope, Roxburgh ...	13,498	8,913	486	4,099	416	416	—
Whitrope, Roxburgh ...	3,307	—	2,025	1,282	—	—	—
Yair Hill, Selkirk & Roxburgh	2,342	1,960	296	86	111	55	56
Bush Nursery, Midlothian	9	—	—	9	—	—	—
Whittinghame Seed Orchard, East Lothian...	30	—	—	30	—	—	—
WEST SCOTLAND CONSERVANCY:							
TOTAL	357,073	138,248	43,991	174,834	6,911	6,117	794
Achaglachgach, Argyll ...	6,123	2,566	2,282	1,275	—	—	—
Ardfin, Jura, Argyll ...	1,507	562	668	277	82	82	—
Ardgartan, Argyll... ..	20,962	6,652	140	14,170	333	333	—
Asknish, Argyll	5,899	3,643	—	2,256	22	22	—
Barcaldine, Argyll	9,754	4,496	1,646	3,612	105	105	—
Benmore, Argyll	9,300	3,216	331	5,753	50	50	—
Black Corries, Argyll & Perth ⁽¹⁾	3,232	68	2,811	353	—	—	—
Carradale, Argyll	10,933	5,143	134	5,656	98	89	9
Carron Valley, Stirling ...	7,500	4,876	398	2,226	162	162	—
Corlarach, Argyll	3,996	2,570	104	1,322	66	13	53
Creran, Argyll	4,256	698	1,541	2,017	157	63	94
Cumbernauld, Dunbarton & West Lothian	1,343	676	531	136	123	94	29
Dalmally, Argyll	2,854	1,421	1,240	193	166	121	45
Devilla, Fife & Clackmannan	3,454	3,050	216	188	77	—	77
Fearnoch, Argyll	2,445	1,396	1,001	48	72	15	57
Garadhbhan, Stirling & Dunbarton	1,392	1,290	51	51	30	—	30
Garelochhead, Dunbarton	1,162	1,044	76	42	94	94	—
Garshelloch, Stirling ...	774	623	151	—	100	—	100

(1) Includes the former Blackmount Forest.

Table 29—continued

Acres

	Land use at 30th September, 1962				Planted in forest year 1962		
	Total	Under plantations	To be planted	Agricultural and other land	Total	Afforested	Replanted
Glenbranter, Argyll ...	9,073	4,019	233	4,821	135	135	—
Glencoe, Argyll ...	3,083	323	1,075	1,685	—	—	—
Glendaruel, Argyll ...	8,706	2,636	653	5,417	171	171	—
Glendochart, Perth ...	5,793	427	666	4,700	206	154	52
Glenduror, Argyll ...	7,914	2,897	203	4,814	140	140	—
Glenfinart, Argyll... ..	8,712	3,228	19	5,465	17	17	—
Glenorchy, Argyll ...	2,247	703	1,217	327	97	97	—
Glenrickard, Arran, Bute-shire	13,998	2,507	6,030	5,461	590	583	7
Inverinan, Argyll ...	17,846	6,357	1,615	9,874	385	385	—
Inverliever, Argyll*	29,060	6,816	527	21,717	53	—	53
Kilennan, Islay, Argyll ...	1,415	190	970	255	88	88	—
Kilmartin, Argyll ...	2,116	1,694	350	72	276	276	—
Kilmichael, Argyll ...	10,078	5,354	1	4,723	106	106	—
Kilmory, Argyll ...	4,205	3,093	130	982	123	82	41
Knapdale, Argyll ...	20,997	7,382	653	12,962	290	285	5
Leapmoor, Renfrew ...	1,465	334	1,057	74	45	—	45
Lennox, Stirling & Dunbarton	829	766	16	47	5	—	5
Loch Ard, Perth & Stirling	35,230	20,169	2,524	12,537	680	680	—
Loch Eck, Argyll ...	5,501	2,393	25	3,083	1	1	—
Loch Etive, Argyll ...	12,916	720	4,169	8,027	284	284	—
Minard, Argyll ...	5,327	3,786	7	1,534	125	117	8
Rowardennan, Stirling ...	9,468	2,537	824	6,107	175	147	28
Saddell, Argyll ...	4,917	1,518	20	3,379	—	—	—
St. Fillans, Perth ...	3,852	1,678	1,086	1,088	200	146	54
South Kintyre, Argyll ...	5,567	747	3,093	1,727	351	351	—
Strathlachlan, Argyll ...	7,615	2,743	266	4,606	41	41	—
Strathyre, Perth ...	10,679	6,430	41	4,208	106	106	—
Tighnabraich, Argyll ...	8,853	1,551	1,975	5,327	329	329	—
Torrie, Perth ...	1,157	1,125	6	26	20	18	2
Tulliallan Nursery, Fife ...	112	—	—	112	—	—	—
Whitelee, Ayr ...	1,456	135	1,219	102	135	135	—

LAND USE AND PLANTING BY FORESTS—WALES, 1962

Table 30

Acres

	Land use at 30th September, 1962				Planted in forest year 1962		
	Total	Under plantations	To be planted	Agricultural and other land	Total	Afforested	Replanted
NORTH WALES							
CONSERVANCY:							
TOTAL	186,771	134,537	15,306	36,928	4,905	3,372	1,533
Aberhiraunt, Merioneth ...	6,843	3,528	82	3,233	17	17	—
Aeron, Cardigan	3,751	3,026	593	132	282	181	101
Arfon, Caernarvon	878	367	330	181	58	39	19
Bechan, Montgomery	745	718	17	10	37	2	35
Beddgelert, Caernarvon ...	3,707	2,159	528	1,020	62	36	26
Breidden, Montgomery & Salop	745	621	53	71	39	11	28
Carno, Montgomery	1,098	1,047	9	42	16	—	16
Ceiriog, Denbigh	1,644	1,435	164	45	—	—	—
Clocaenog, Denbigh & Merioneth	17,473	13,652	1,423	2,398	387	349	38
Clwyd, Denbigh & Flint ...	2,317	1,572	386	359	33	4	29
Coed Sarnau, Radnor	7,633	5,293	1,268	1,072	181	131	50
Coed y Brenin, Merioneth ...	18,584	12,952	616	5,016	452	406	46
Cynwyd, Merioneth	1,937	1,636	126	175	109	10	99
Deudraeth, Merioneth	3,172	1,686	671	815	134	134	—
Dovey, Merioneth & Montgomery	20,971	16,736	1,127	3,108	684	634	50
Dyfnant, Montgomery	7,722	4,854	25	2,843	16	—	16
Edw, Radnor	622	579	40	3	172	165	7
Elwy, Denbigh & Flint	1,636	1,434	178	24	66	16	50
Glanllyn, Merioneth	1,323	1,125	24	174	44	41	3
Goror, Denbigh & Salop ...	1,044	879	121	44	73	46	27
Gwydyr, Caernarvon & Denbigh	19,779	12,702	1,471	5,606	542	214	328
Hafren, Montgomery	10,718	8,587	368	1,763	14	14	—
Halcyn, Denbigh & Flint ...	1,047	865	96	86	62	—	62
Kerry, Montgomery, Salop & Radnor	2,799	2,710	54	35	89	—	89
Llambod, Cardigan & Carmarthen	1,804	1,708	62	34	58	50	8
Llangollen, Denbigh	1,169	1,074	84	11	28	12	16
Llyn, Caernarvon	2,523	1,406	728	389	94	33	61
Maelor, Denbigh, Flint & Salop	561	380	119	62	55	—	55
Mathrafal, Montgomery & Salop	2,826	2,195	555	76	124	33	91
Môn, Anglesey	3,915	2,956	215	744	235	228	7
Myherin, Cardigan	6,151	3,703	63	2,385	69	69	—
Penllyn, Merioneth	1,263	989	68	206	159	159	—
Radnor, Radnor & Hereford	6,515	5,409	79	1,027	192	165	27
Rheidol, Cardigan	4,330	2,972	987	371	81	19	62
Taliesin, Cardigan & Montgomery	6,682	2,794	1,947	1,941	36	4	32
Tanat, Montgomery & Denbigh	849	740	98	11	2	—	2
Tarenig, Cardigan & Montgomery	5,044	3,614	488	942	167	150	17
Ystwyth, Cardigan	4,947	4,434	43	470	36	—	36
Chirk Depot, Denbigh	4	—	—	4	—	—	—

Table 30—continued

Acres

	Land use at 30th September, 1962				Planted in forest year 1962		
	Total	Under plantations	To be planted	Agricultural and other land	Total	Afforested	Replanted
SOUTH WALES							
CONSERVANCY:							
TOTAL	174,244	122,296	34,457	17,491	6,776	4,802	1,974
Bannau, Brecon	5,690	3,974	1,008	708	249	245	4
Brechfa, Carmarthen	16,451	13,554	1,124	1,773	236	235	1
Brecon, Brecon	2,267	1,842	164	261	51	—	51
Caeo, Carmarthen	4,740	4,140	107	493	131	50	81
Chepstow, Monmouth	2,508	1,948	551	9	101	—	101
Cilgwyn, Carmarthen	1,287	1,261	13	13	3	—	3
Coed Caerdydd, Glamorgan	1,349	797	532	20	98	—	98
Coed Morgannwg, Glamorgan	41,930	30,183	7,199	4,548	1,567	1,284	283
Coed y Rhaiadr, Brecon	3,257	2,249	855	153	270	270	—
Conwil Elvet, Carmarthen	1,015	747	265	3	170	59	111
Crychan, Brecon & Carmarthen	9,384	8,622	271	491	60	39	21
Draethen, Glamorgan & Monmouth	1,569	729	837	3	56	—	56
Ebbw, Monmouth	8,800	6,320	1,801	679	500	314	186
Gamrhiw, Brecon	1,218	931	247	40	58	34	24
Giedd, Brecon	841	737	36	68	55	55	—
Glasfynydd, Brecon & Carmarthen	3,583	3,343	125	115	21	—	21
Gower, Glamorgan	1,122	568	545	9	55	6	49
Goytre, Monmouth	752	656	91	5	55	—	55
Gwendraeth, Carmarthen	621	555	40	26	188	132	56
Hay, Brecon, Hereford & Radnor	1,913	1,509	306	98	77	77	—
Irfon, Brecon	4,162	2,371	1,218	573	186	130	56
Llanddowror, Carmarthen	2,028	1,328	691	9	152	52	100
Llandeilo, Carmarthen	1,134	1,035	—	99	22	22	—
Llantrisant, Glamorgan	1,356	763	437	156	7	—	7
Monmouth, Monmouth	1,697	1,026	669	2	49	—	49
Mynydd Ddu, Brecon & Monmouth	3,547	2,782	314	451	106	101	5
Pembrey, Carmarthen	4,690	2,101	502	2,087	—	—	—
Penllegaer, Glamorgan	694	638	16	40	1	—	1
Preseli, Pembroke & Carmarthen	1,410	998	323	89	161	140	21
Rhondda, Glamorgan	1,961	412	1,381	168	347	347	—
St. Gwynno, Glamorgan	7,350	4,907	1,681	762	406	178	228
Slebech, Pembroke	2,083	1,748	252	83	86	14	72
Tair Onen, Glamorgan	1,205	801	232	172	30	—	30
Talybont, Brecon	3,865	3,135	589	141	157	140	17
Teifi, Carmarthen, Cardigan and Pembroke	1,142	1,073	62	7	64	—	64
Tintern, Monmouth	5,207	4,849	194	164	47	—	47
Towy, Cardigan, Brecon & Carmarthen	16,518	4,815	8,806	2,897	843	843	—
Tŷ Ddewi, Pembroke	1,251	644	573	34	35	35	—
Wentwood, Monmouth	2,647	2,205	400	42	76	—	76

Table 31
ENGLAND

Main statistics for the year ended 30th September, 1962

FORESTRY COMMISSION

LAND USE AT THE END OF THE YEAR

	<i>Acres</i>
Total area ...	738,694
Forest land: Total	602,155
Acquired plantations	52,496
Planted by Forestry Commission	462,106
To be planted	87,553
Other land: Total	136,539
Nurseries	787
Agricultural and grazing	52,223
Forest Workers' Holdings	5,271
Unplatable and miscellaneous ...	78,258

FOREST LAND ACQUIRED IN THE YEAR

	<i>Acres</i>
Total area ...	4,858
Standing woods	669
Bare land for afforestation	1,863
Former woodland for replanting	2,326

PLANTING IN THE YEAR

	<i>Acres</i>
Total area ...	15,499
Afforested ...	6,103
Replanted ...	9,396

AREAS OF PLANTATIONS AND VOLUMES OF TIMBER THINNED
AND FELLED IN THE YEAR

	<i>Area (acres)</i>	<i>Volume (million hoppus feet)</i>
Total	—	10·85
Felled ...	2,352	3·66
Thinned	17,971	7·19

CONSTRUCTION AND MAINTENANCE OF ROADS

	<i>Miles</i>
Total completed during year	134
Under construction at end of year ...	191
Maintained during year	3,399

EMPLOYMENT

Number of forest workers employed at end of year: 4,631 (including 178 part-time workers).

Table 31—continued

ENGLAND

Main statistics for the year ended 30th September, 1962

PRIVATE FORESTRY

PROGRESS OF THE DEDICATION SCHEME

	<i>Number</i>	<i>Area (acres)</i>
Total schemes completed to date	1,473	392,601
Schemes completed during year (net)	174	26,004
Schemes approved or in preparation at end of year	158	26,279

PROGRESS OF THE APPROVED WOODLANDS SCHEME

	<i>Number</i>	<i>Area (acres)</i>
Total schemes completed to date	503	110,741
Schemes completed during year (net)	30	3,806
Schemes approved or in preparation at end of year	5	792

ESTIMATED AREA PLANTED BY PRIVATE OWNERS IN THE YEAR

	<i>Acres</i>
Total area	17,498
In Dedicated Woodlands	10,923
In Approved Woodlands	2,877
With Small Woods Planting Grants	2,461
Without Grants (estimated)	1,237

Table 32
SCOTLAND

Main statistics for the year ended 30th September, 1962

FORESTRY COMMISSION

LAND USE AT THE END OF THE YEAR

	<i>Acres</i>
Total area ...	1,484,845
Forest land: Total ...	806,844
Acquired plantations	24,994
Planted by Forestry Commission	602,218
To be planted	179,632
Other land: Total	678,001
Nurseries	826
Agricultural and grazing	400,661
Forest Workers' Holdings ...	6,046
Unplantable and miscellaneous ...	270,468

FOREST LAND ACQUIRED IN THE YEAR

	<i>Acres</i>
Total area ...	24,822
Standing woods	— 1
Bare land for afforestation ...	21,953
Former woodland for replanting	2,870

PLANTING IN THE YEAR

	<i>Acres</i>
Total area	34,768
Afforested ...	28,135
Replanted ...	6,633

AREAS OF PLANTATIONS AND VOLUMES OF TIMBER THINNED
AND FELLED IN THE YEAR

	<i>Area (acres)</i>	<i>Volume (million hoppus feet)</i>
Total	—	6.83
Felled ...	669	1.43
Thinned	13,179	5.40

CONSTRUCTION AND MAINTENANCE OF ROADS

	<i>Miles</i>
Total completed during year	190
Under construction at end of year ...	48
Maintained during year	2,349

EMPLOYMENT

Number of forest workers employed at end of year: 3,823 (including 55 part-time workers).

Table 32—*continued*

SCOTLAND

Main statistics for the year ended 30th September, 1962

PRIVATE FORESTRY

PROGRESS OF THE DEDICATION SCHEME

	<i>Number</i>	<i>Area (acres)</i>
Total schemes completed to date... ..	535	304,886
Schemes completed during year (net)	46	19,438
Schemes approved or in preparation at end of year	18	5,720

PROGRESS OF THE APPROVED WOODLANDS SCHEME

	<i>Number</i>	<i>Area (acres)</i>
Total schemes completed to date... ..	84	38,825
Schemes completed during year (net)	—	—378
Schemes approved or in preparation at end of year	—	—

ESTIMATED AREA PLANTED BY PRIVATE OWNERS IN THE YEAR

	<i>Acres</i>
Total area	14,157
In Dedicated Woodlands	10,330
In Approved Woodlands	1,399
With Small Woods Planting Grants	1,377
Without Grants (estimated)	1,051

Table 33

WALES

Main statistics for the year ended 30th September, 1962

FORESTRY COMMISSION		
LAND USE AT THE END OF THE YEAR		
		<i>Acres</i>
Total area	...	361,015
Forest land: Total		306,596
Acquired plantations	5,961
Planted by Forestry Commission		250,872
To be planted	49,763
Other land: Total		54,419
Nurseries	386
Agricultural and grazing	37,327
Forest Workers' Holdings	4,664
Unplantable and miscellaneous	12,042
FOREST LAND ACQUIRED IN THE YEAR		
		<i>Acres</i>
Total area	...	4,937
Standing woods	101
Bare land for afforestation	4,003
Former woodland for replanting	833
PLANTING IN THE YEAR		
		<i>Acres</i>
Total area	...	11,681
Afforested	...	8,175
Replanted	...	3,506
AREAS OF PLANTATIONS AND VOLUMES OF TIMBER THINNED AND FELLED IN THE YEAR		
	<i>Area (acres)</i>	<i>Volume (million hoppus feet)</i>
Total...	—	4.90
Felled	1,267	1.27
Thinned	8,658	3.63
CONSTRUCTION AND MAINTENANCE OF ROADS		
		<i>Miles</i>
Total completed during year	...	116
Under construction at end of year	...	18
Maintained during year	1,539

EMPLOYMENT

Number of forest workers employed at end of year: 2,791 (including 40 part-time workers).

Table 33—continued

WALES

Main statistics for the year ended 30th September, 1962

PRIVATE FORESTRY

PROGRESS OF THE DEDICATION SCHEME

	<i>Number</i>	<i>Area (acres)</i>
Total schemes completed to date... ..	208	36,080
Schemes completed during year (net)	33	6,214
Schemes approved or in preparation at end of year	50	11,011

PROGRESS OF THE APPROVED WOODLANDS SCHEME

	<i>Number</i>	<i>Area (acres)</i>
Total schemes completed to date... ..	21	4,008
Schemes completed during year (net)	1	—23
Schemes approved or in preparation at end of year	—	—

ESTIMATED AREA PLANTED BY PRIVATE OWNERS IN THE YEAR

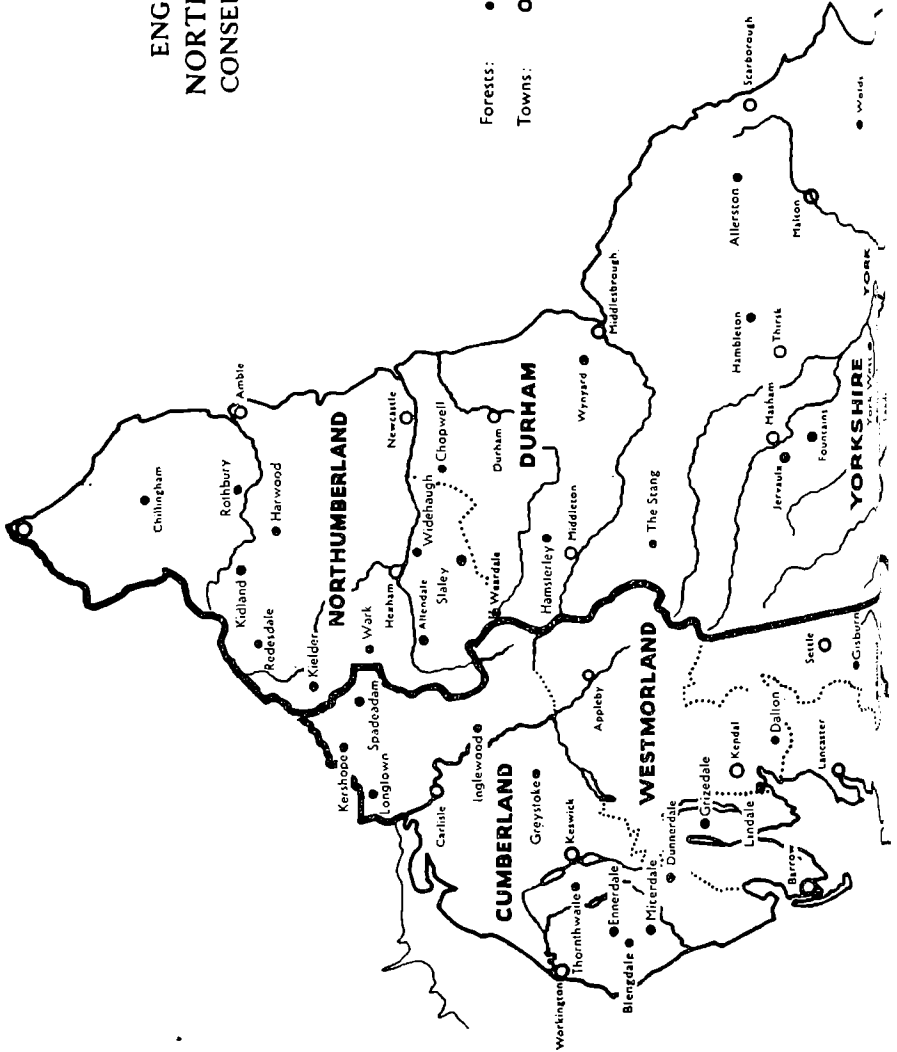
	<i>Acres</i>
Total Area	3,464
In Dedicated Woodlands	2,922
In Approved Woodlands	168
With Small Woods Planting Grants	333
Without Grants (estimated)	41

APPENDIX II

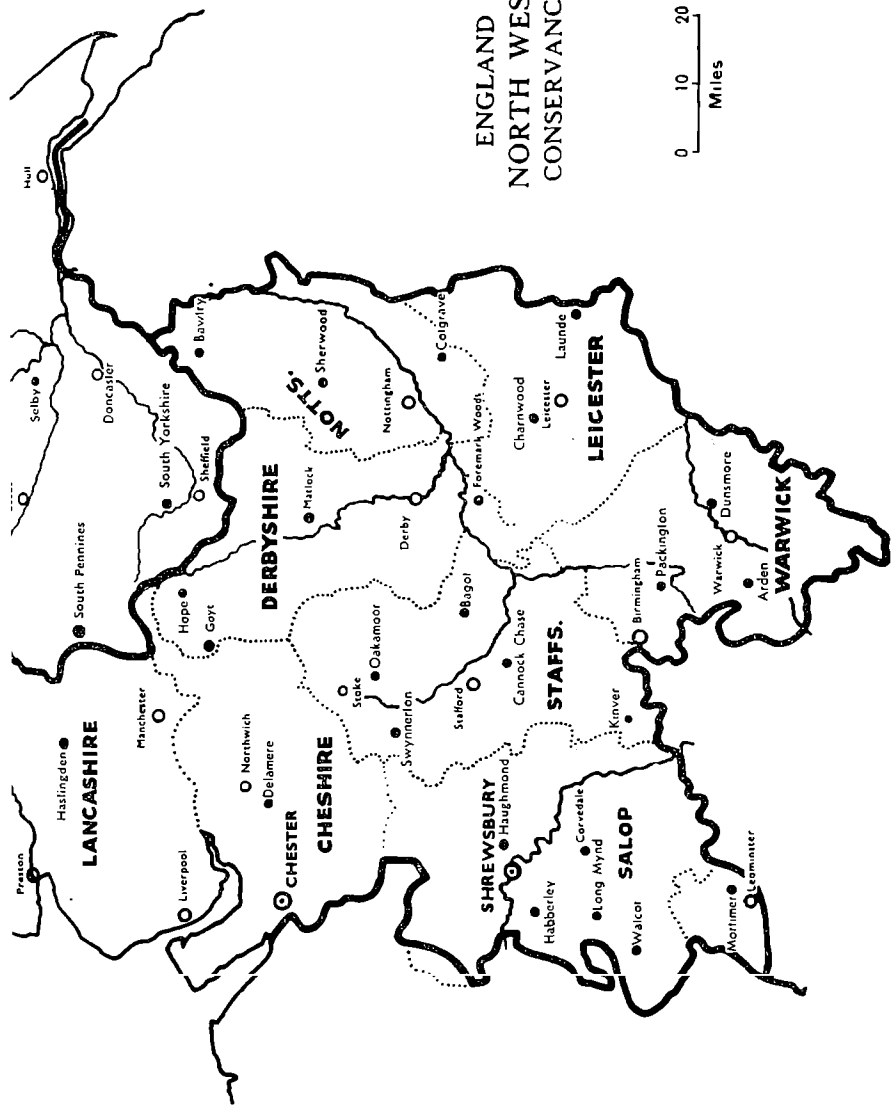
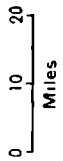
MAPS

Maps showing the distribution of Commission forests and the boundaries of the Conservancies, as at 30th September, 1962, follow overleaf.

ENGLAND
NORTH EAST
CONSERVANCY

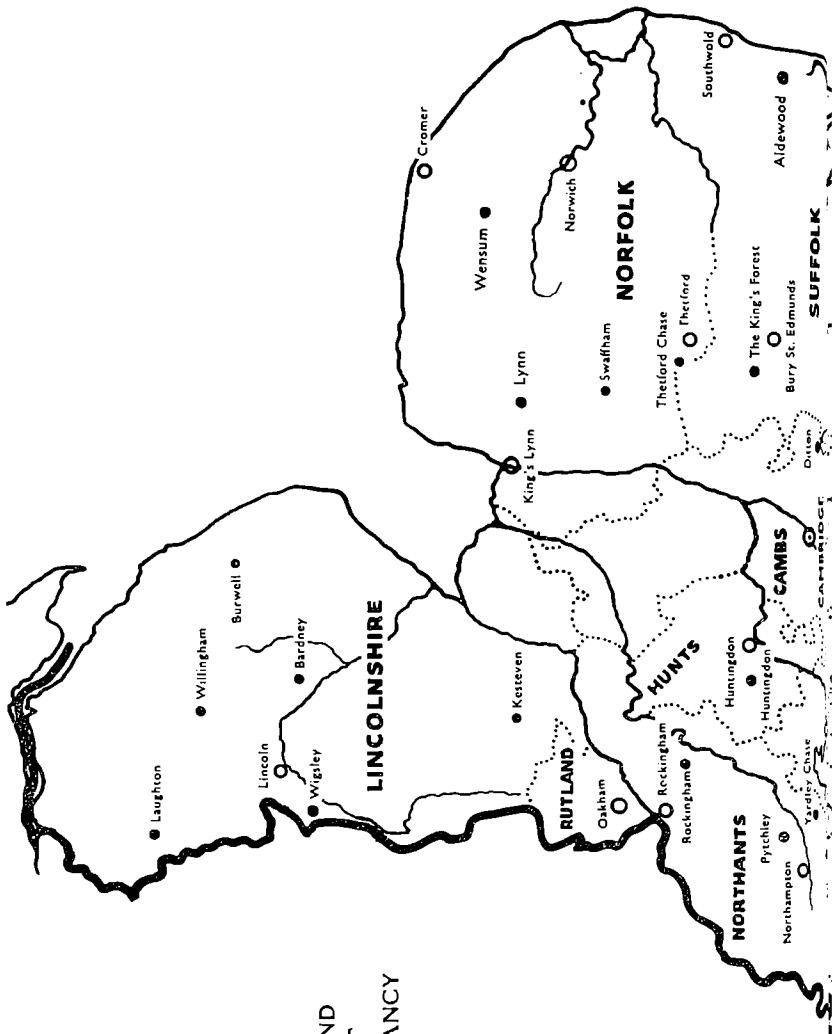


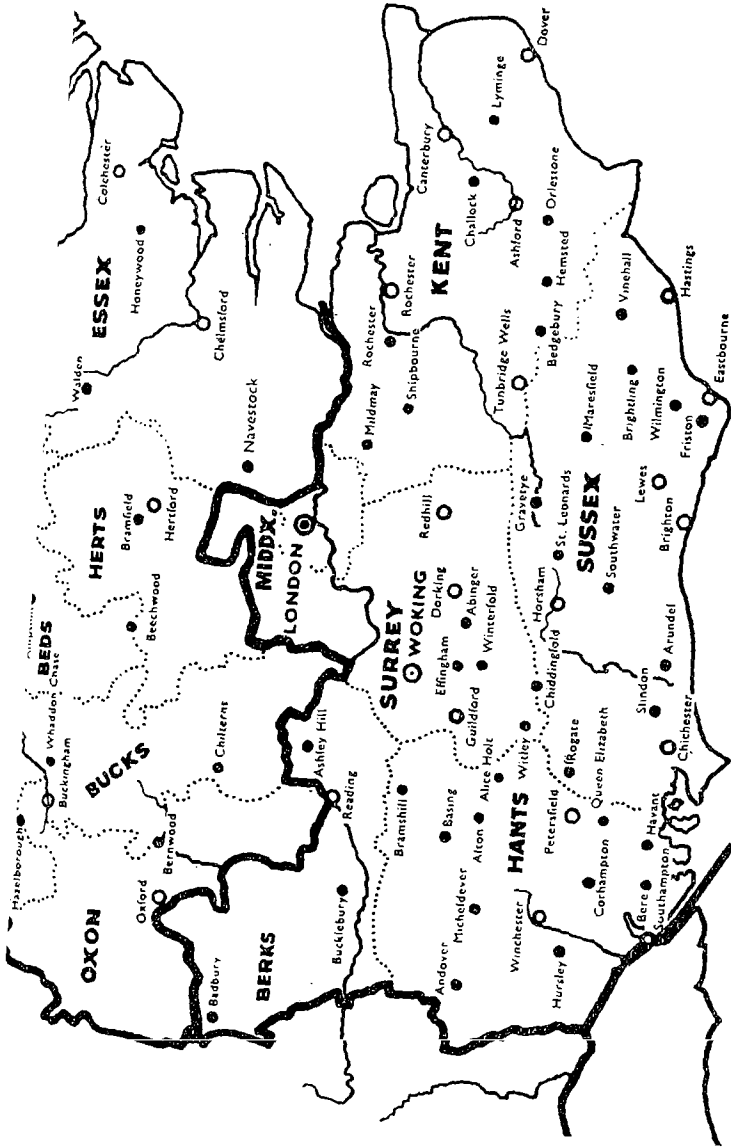
ENGLAND
NORTH WEST
CONSERVANCY



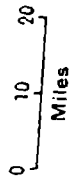
ENGLAND
EAST
CONSERVANCY

- Forests: ●
Towns: ○

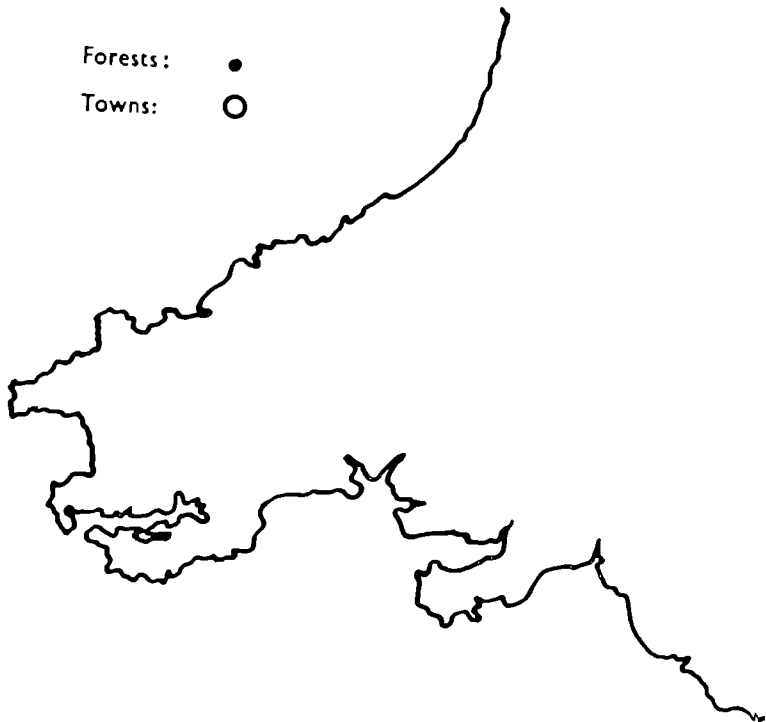




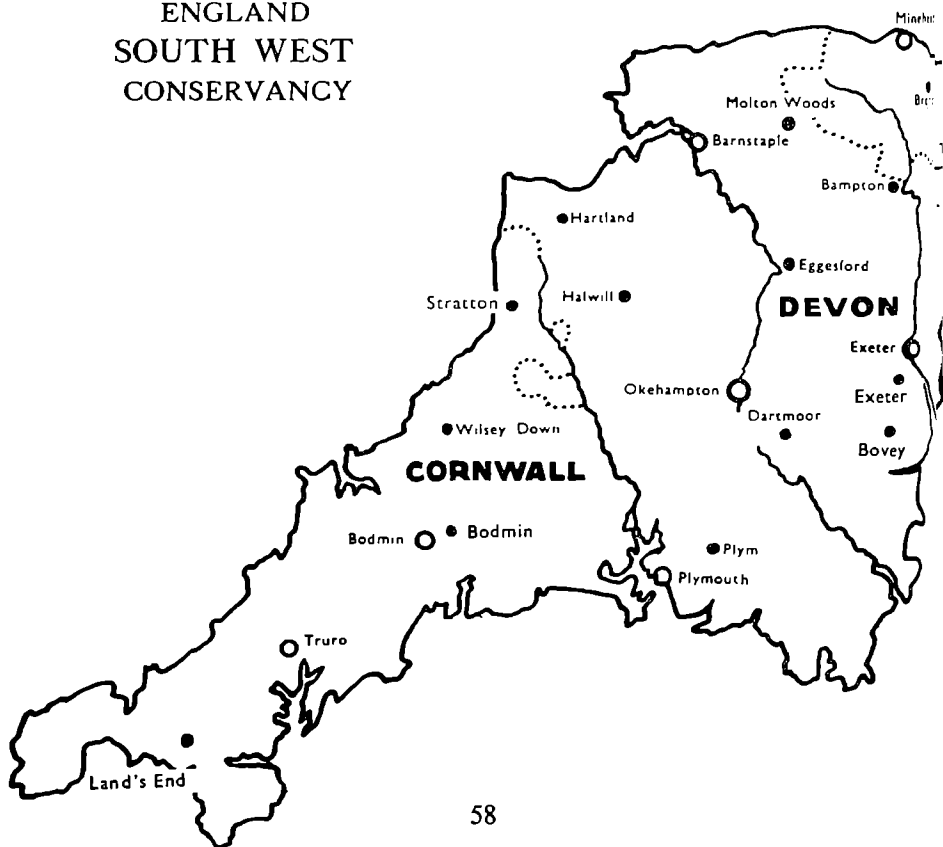
ENGLAND
SOUTH EAST
CONSERVANCY

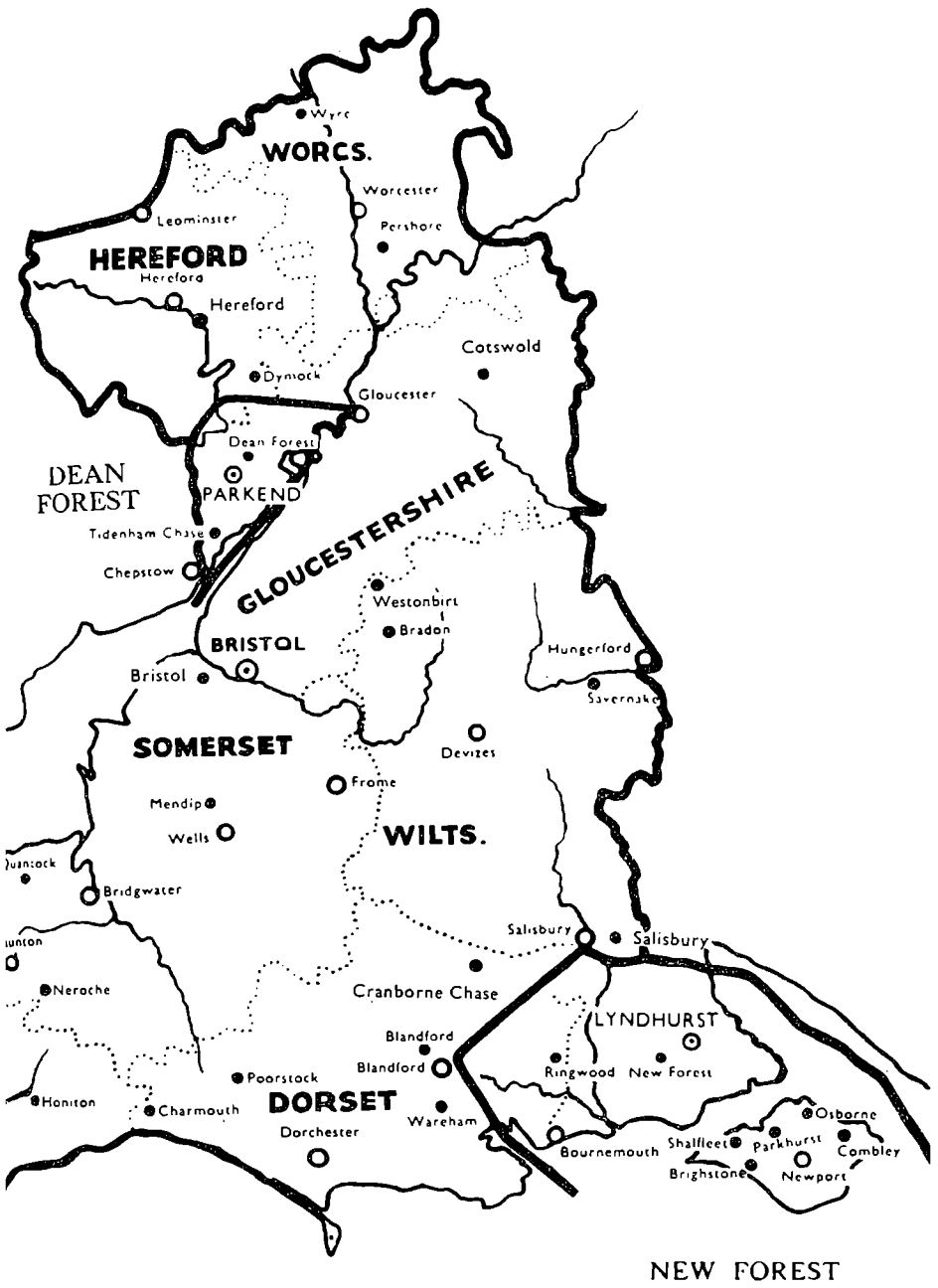


Forests: ●
Towns: ○

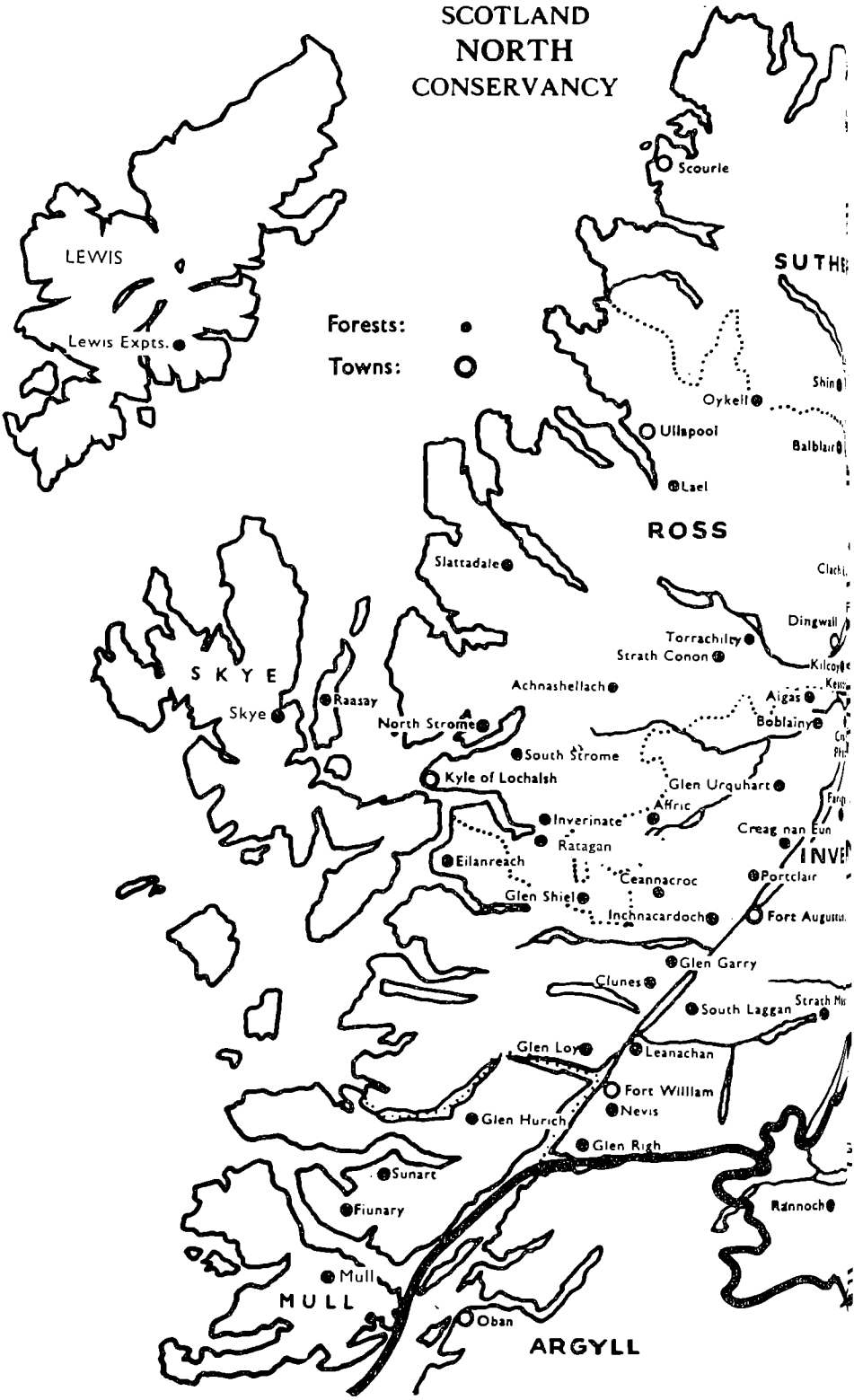


ENGLAND
SOUTH WEST
CONSERVANCY

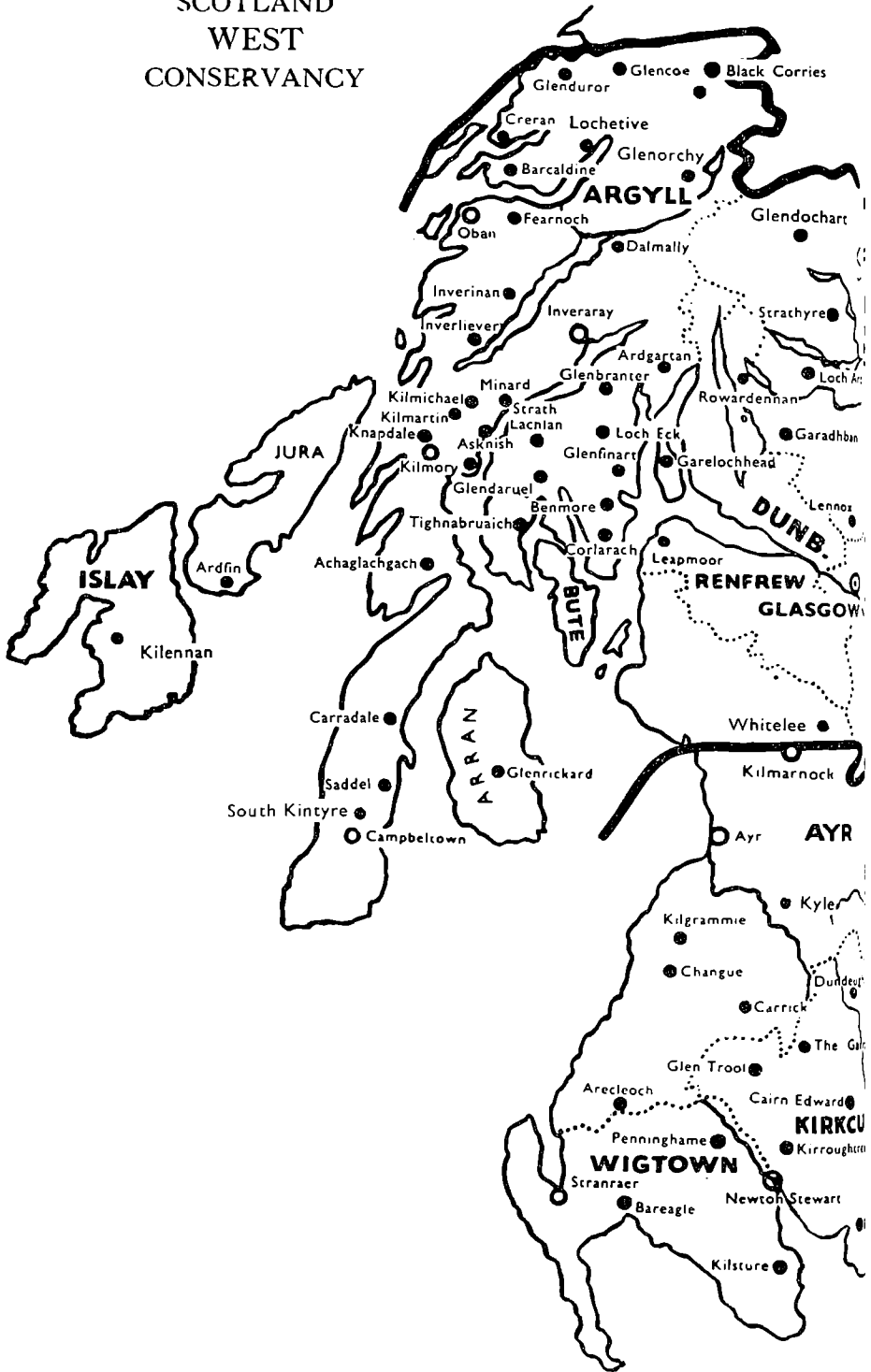




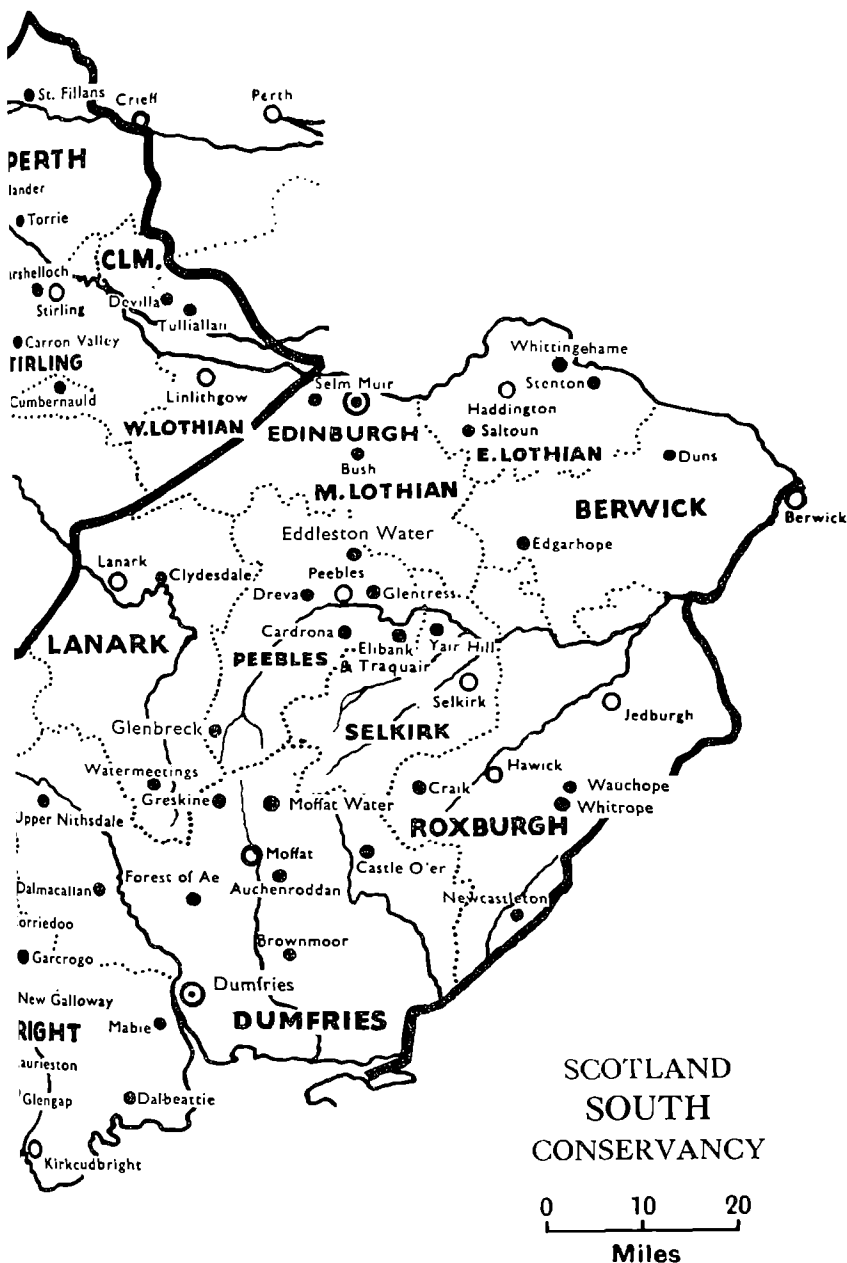
SCOTLAND NORTH CONSERVANCY

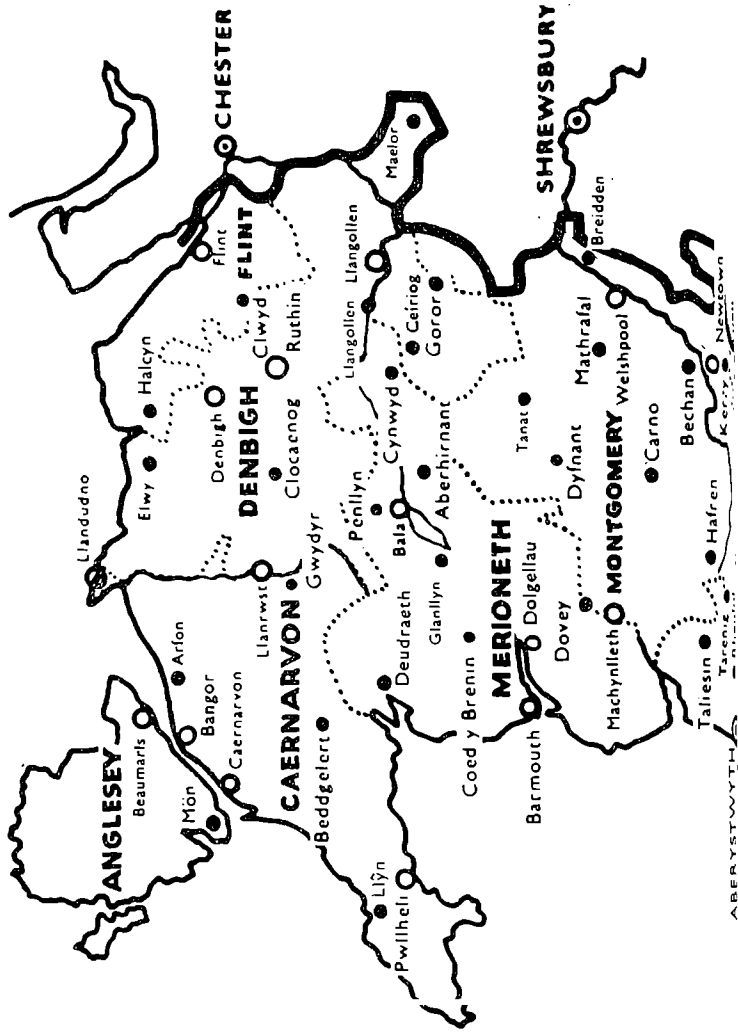


SCOTLAND
WEST
CONSERVANCY



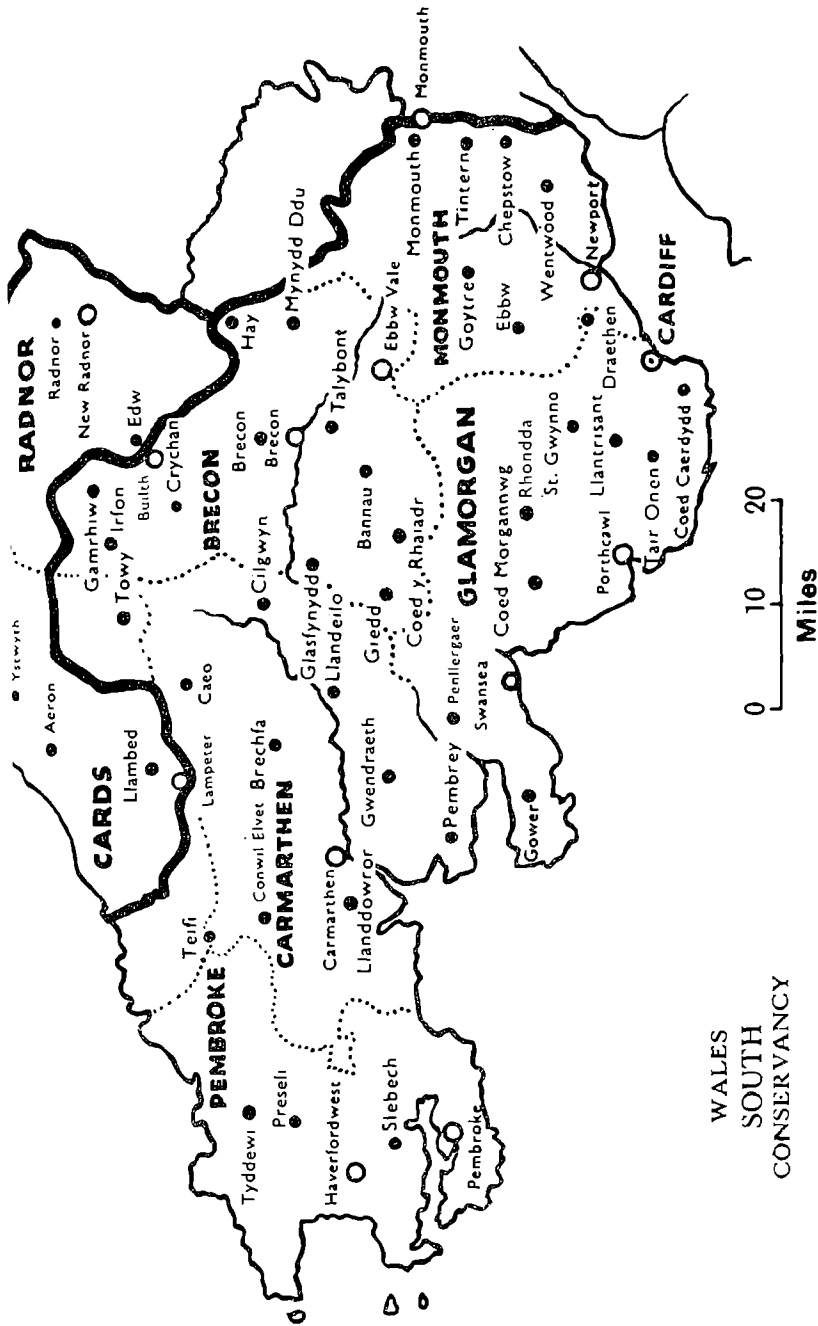
Forests: ●
 Towns: ○





WALES
NORTH
CONSERVANCY

- Forests: ●
- Towns: ○



WALES
SOUTH
CONSERVANCY

ADDRESSES OF THE MAIN OFFICES OF THE FORESTRY COMMISSION

Headquarters of the Forestry Commission:

25, Savile Row, London, W.1. (*Regent* 0221.)

Director of Forestry for England:

25, Savile Row, London, W.1. (*Regent* 0221.)

Director of Forestry for Scotland:

25, Drumsheugh Gardens, Edinburgh, 3. (*Edinburgh Caledonian* 4782.)

Director of Forestry for Wales:

Victoria House, Victoria Terrace, Aberystwyth. (*Aberystwyth* 2,367.)

Conservancy Offices

England:

North West: Upton Grange, Upton Heath, Chester. (*Chester* 24006.)

North East: Briar House, Fulford Road, York. (*York* 24684.)

East: Brooklands Avenue, Cambridge. (*Cambridge* 54495.)

South East: Danesfield, Grange Road, Woking. (*Woking* 2270.)

South West: Flowers Hill, Brislington, Bristol, 4. (*Bristol* 78041.)

New Forest: The Queen's House, Lyndhurst, Hants. (*Lyndhurst* 300.)

Dean Forest: Whitemead Park, Parkend, Lydney, Glos. (*Whitecroft* 305.)

Scotland:

North: 60, Church Street, Inverness. (*Inverness* 32811.)

East: 6, Queen's Gate, Aberdeen. (*Aberdeen* 33361.)

South: Greystone Park, Moffat Road, Dumfries. (*Dumfries* 2425.)

West: 20, Renfrew Street, Glasgow, C.2. (*Glasgow Douglas* 7261.)

Wales:

North: 15, Belmont, Shrewsbury. (*Shrewsbury* 4071.)

South: St. Agnes Road, Gabalfa, Cardiff. (*Cardiff* 62131.)

Research Station

Alice Holt Lodge, Wrecclesham, Farnham, Surrey. (*Bentley* 2255.)

Education Branch

Chief Education Officer:

25, Savile Row, London, W.1. (*Regent* 0221.)

