

FORESTRY COMMISSION

Forty-Sixth
Annual Report of the
Forestry Commissioners
for the year ended
30th September 1965

*Presented pursuant to Section 7(3) of the Forestry
Act, 1945 (8 & 9 Geo. VI Ch. 35) and S.I. 1965, No. 319*

Ordered by The House of Commons to be printed

12th July 1966

LONDON

HER MAJESTY'S STATIONERY OFFICE

PRICE 9s. 6d. NET



THE FORESTRY COMMISSIONERS

at 30th September, 1965

Mr. Leslie A. W. Jenkins, *Chairman*.

Sir Henry Beresford-Peirse, Bt., C.B., F.R.S.E., *Deputy Chairman
and Director General*.

The Earl of Carlisle, M.C.

Mr. M. Compton.

Mr. E. Gwynfryn Davies, J.P.

Mr. J. A. Dickson.

Mr. F. Sellers.

Major Sir William Strang Steel, Bt.

Mr. T. Taylor.

Mr. A. Watt, C.B.E.

Senior Officer for Scotland: Mr. G. Forrest.

Senior Officer for Wales: Mr. J. Q. Williamson, M.B.E.

Director (Research): Mr. J. R. Thom.

CONSERVATORS

England

North West: Mr. J. S. R. Chard
North East: Mr. G. E. Godwin
East: Mr. G. W. Backhouse
South East: Mr. C. A. J. Barrington
South West: Mr. C. A. Connell, O.B.E.
New Forest: Mr. W. A. Cadman (*Deputy Surveyor*)
Dean Forest: Mr. R. G. Sanzen-Baker (*Deputy Surveyor*)

Scotland

North: Mr. H. A. Maxwell
East: Mr. G. I. MacKenzie
South: Mr. J. E. James
West: Mr. J. W. L. Zehetmayr

Wales

North: Mr. J. H. James
South: Mr. J. Q. Williamson, M.B.E.

CONTENTS

	<i>Page</i>
NAMES OF COMMISSIONERS AND SENIOR STAFF	2
GENERAL REVIEW	5
Changes in Organisation	5
National Committees	7
The Commission's Programme	7
Planting	8
Acquisition of Land ...	8
Harvesting and Marketing	8
Finance	9
Forestry and the Countryside...	9
Private Forestry	10
Home Grown Timber Advisory Committee	10
THE YEAR'S WORK	12
Private Forestry	12
Markets and Prices	12
Forestry Commission Operations	13
Finance	13
Staff	14
Acquisition of Land ...	14
Planting	15
Production and Disposal of Forest Produce	15
Forest Management ...	15
Research	15
Work Study	15
Engineering	15
Education and Training	16
Forest Fires ...	16
Publications	16
COMMITTEES	
National Committees	18
Regional Advisory Committees	18
Home Grown Timber Advisory Committee	20
Utilisation Committee	20
Pitwood Committee	21
Mechanical Development Committee	21
Advisory Committee on Forest Research ...	22
APPENDIX I. HOME GROWN TIMBER ADVISORY COMMITTEE'S ANNUAL REPORT, 1965	23

	<i>Page</i>
APPENDIX II. FINANCIAL AND STATISTICAL TABLES	26
<i>Table</i>	
1. Forestry Fund: Summary	26
2. Account of Forestry Operations ...	28
3. Nurseries Account... ..	28
4. Services other than Forestry Operations	30
5. Balance Sheet	32
6. Land Use	34
7. Land Managed by the Agricultural and Other Departments	34
8. Forest Land Acquired, in Year	34
9. Summary Statement of Land Acquired, to end of Year	35
10. Stocks of Nursery Plants	35
11. Nursery Plants Sold to Trade	35
12. Seed Imports	36
13. Planting in the Year	37
14. Progress of Planting in Last Ten Years ...	37
15. Species Planted in the Year ...	38
16. Fires in Forests	39
17. Causes of Fires	39
18. Areas of Plantations and Volumes of Timber Thinned and Felled ...	40
19. Sales of Timber	40
20. Forest Roads	41
21. Properties Managed ...	41
22. New Houses	41
23. Dedication Scheme for Private Estates ...	42
24. Approved Woodlands Scheme for Private Estates ...	42
25. Area Planted by Private Owners... ..	43
26. Volume of Timber Licensed for Felling and Thinning on Private Estates ...	43
27. Area Licensed for Clear Felling on Private Estates ...	43
28. Land Use and Planting by Forests—England ...	44
29. Land Use and Planting by Forests—Scotland ...	48
30. Land Use and Planting by Forests—Wales ...	53
31. England: Main Statistics	55
32. Scotland: Main Statistics ...	57
33. Wales: Main Statistics ...	59
APPENDIX III. MAPS	61
England	61
Scotland	64
Wales	66
ADDRESSES OF THE MAIN OFFICES OF THE FORESTRY COMMISSION ...	67
PLATES	<i>Central Inset</i>

ACKNOWLEDGMENTS

Thanks are due to the following photographers: Plate 1, Aberdeen Journals, Ltd.; Plates 2 and 4, Ronald Thompson, Denbigh; Plate 3, Howard Bell, Pickering; Plate 5, Mrs. Thelma Evans, Farnham; Plate 6, G. W. Hales, of Fox Photos, London; Plate 7, Eric Ashby, Ringwood; Plate 8, Dr. C. E. Hart, Coleford.

FORTY-SIXTH ANNUAL REPORT
OF THE
FORESTRY COMMISSIONERS
FOR THE YEAR ENDED
30th SEPTEMBER, 1965

FORESTRY COMMISSION
25, SAVILE ROW,
LONDON, W.1.

5th May, 1966

To:

THE MINISTER OF LAND AND NATURAL RESOURCES
THE SECRETARY OF STATE FOR SCOTLAND
THE SECRETARY OF STATE FOR WALES

Gentlemen,

In pursuance of Section 7(3) of the Forestry Act, 1945, and S.I. 1965, No. 319, I have the honour to transmit the 46th Annual Report of the Forestry Commissioners which covers the Forest Year ended 30th September, 1965.

I am, Gentlemen,

Your obedient Servant,

(Sgd.) LESLIE A. W. JENKINS
Chairman.

GENERAL REVIEW

CHANGES IN ORGANISATION

1. During the year under report major changes were made in the structure of the Commission, following a review undertaken by the Government in the light of the recommendations of the Estimates Committee* and the developments which have taken place since the Commission was reconstituted by the Forestry Act, 1945. Broadly, the object of these changes has been first to take account of the evolution of the Commission from a primarily creative towards a productive role; and, secondly, to equip it with a type and structure of management more closely in accordance with current practice for bodies with similar commercial functions.

2. Until now the Commissioners have served only in a part-time capacity. While recognising the services which the part-time Commissioners had given to forestry, the Government felt that the time had come for at least a proportion of full-time executive members to be included among their number. They therefore

* *Seventh Report from the Estimates Committee, Session 1963-64—The Forestry Commission: H.M.S.O. 14s.*

decided that the Director General should be appointed a Commissioner; and that in addition three full-time Commissioners should be responsible for Administration and Finance, Forest and Estate Management, and Harvesting and Marketing, respectively. These fundamental changes in the composition of the Commission inevitably entailed changes of membership; and a tribute is due to the public spirit of the Commissioners who, in placing their offices at the disposal of the forestry Ministers, made possible the reconstitution of the body to which they had given such loyal and able service.

3. As Chairman of the Forestry Commission Lord Waldegrave took a full part in the discussions which led to the re-organisation, which was announced on 10th May, 1965, in a written answer by the Minister of Land and Natural Resources to a Parliamentary Question in the House of Commons. The Commissioners would like to associate themselves most warmly with the tribute which the Minister paid to Lord Waldegrave on that occasion for his work in the development of the Commission.

4. In Lord Waldegrave's view it was in the Commission's best interests that it should go forward in its new form under a new Chairman, and Mr. Leslie Jenkins was appointed to succeed him on the same part-time basis on 1st July, 1965, the date of the formal reconstitution. Major D. C. Bowser, Mr. G. E. H. Palmer, Colonel J. F. Williams-Wynne and Captain J. Maxwell Macdonald left the Commission and were succeeded by the Earl of Carlisle, as a part-time Commissioner, and by four full-time Commissioners—Sir Henry Beresford-Peirse (Director General and Deputy Chairman), Mr. Maurice Compton (Commissioner for Administration and Finance and Secretary to the Commission), Mr. Andrew Watt (Commissioner for Forest and Estate Management) and Mr. J. A. Dickson (Commissioner for Harvesting and Marketing). During their terms of office Major Bowser and Mr. Palmer had made an outstanding contribution to forestry as Chairmen of the National Committees for Scotland and England respectively; while Colonel Williams-Wynne, especially in the sphere of amenity and recreation, and Captain Maxwell Macdonald, on the technical side, had both given invaluable guidance to their colleagues in the formulation of the Commission's policy.

5. There have also been important changes in the senior staff of the Commission. Mr. G. B. Ryle, Deputy Director General since January, 1963, retired in October, 1965, having reached the age of retirement after 41 years in the Commission's service. Mr. Ryle's original contributions to the practice of forestry have received professional recognition by foresters throughout the world, and the national forest estate as it exists today, particularly in England and Wales, owes a great deal to his energy and imagination. In July, 1965, Mr. H. A. Turner, who had been Secretary since May 1950, left the Commission for the Ministry of Land and Natural Resources. Mr. Turner came to the Commission during the early stages of the post-war expansion and he will long be remembered for his insight and wisdom in guiding the Commission and for his devotion to its interests.

6. The abolition of the Directorates for England, Scotland and Wales is the major change in the executive structure of the Commission. This has had the effect of bringing the Conservancies under the direct control of Headquarters, which has itself been reconstructed on a functional basis under the three full-time

Commissioners for Administration and Finance, for Forest and Estate Management, and for Harvesting and Marketing. The broad functional control which will be exercised by Headquarters over the shortened lines of communication will make co-ordination of policy easier throughout the Commission and will simplify the whole process of administration.

7. It has been recognised that the Commissioners must keep closely in touch with the special implications of their policy and operations in Scotland and in Wales. The posts of Forestry Commission Senior Officer (Scotland) and Forestry Commission Senior Officer (Wales) have therefore been created to act as intermediaries between the Commissioners and the forestry and ancillary interests in these countries. Mr. Geoffrey Forrest, formerly the Chief Land Agent in Scotland, has been appointed the Senior Officer in Scotland and Mr. J. Q. Williamson, formerly Director of Forestry for Wales, the Senior Officer in Wales. Mr. J. R. Thom, formerly Director of Forestry for England, is now the Director of Research.

8. The effect of these administrative changes is that business arising in Scotland and Wales will normally be dealt with in those countries, either by the Conservancies or by Headquarters staff out-stationed in Edinburgh and Cardiff. Shortly after the end of the year under report the Commission's representation in Wales was also strengthened by the transfer of the North Wales Conservancy Office from Shrewsbury to Aberystwyth.

9. The Commissioners wish to acknowledge the loyalty of their staff at all levels in accepting the inconveniences of the transition period, and in adapting themselves to the new arrangements.

NATIONAL COMMITTEES

10. The abolition of the national directorates clearly entailed a reconsideration of the functions of the National Committees. The Commissioners therefore decided towards the end of the year that the National Committees should be invited to accept new terms of reference, which emphasise the importance of their role in maintaining liaison between the Commissioners and the specific interests of the countries they represent. Hitherto the National Committees have exercised a measure of executive authority; their relations with the Commissioners are now entirely advisory. The Commissioners are confident that the Committees will continue to play a useful and constructive part in the counsels of the Commission in the new direction which they have been given in the light of the reorganisation. The Senior Officers in Scotland and Wales serve on the appropriate Committees; and Mr. Andrew Watt (Commissioner for Forest and Estate Management) has been appointed to the National Committee for England.

THE COMMISSION'S PROGRAMME

11. The Commission's planting programmes were reviewed by the forestry Ministers during the year. Early in the year the programme for Scotland had been increased as an interim measure by the Secretary of State, with the agreement of his colleagues, by 3,000 acres to 30,000 acres. On the completion of the review the Scottish programme was recast. Details were given in the White Paper on the Scottish Economy; and on 3rd February, 1966, the Minister of

Land and Natural Resources made the following statement in the House of Commons on the Commission's programmes in general:—

“The Government have completed their review of planting to be carried out by the Forestry Commission. The current programme for Great Britain which was announced in July 1963 provided for the Commission to plant 450,000 acres during the ten years from 1964–73. After careful examination of the competing demands on the national economy it has been decided that in England and Wales planting should continue within the existing 450,000 acres programme. The White Paper on the Scottish Economy 1965 to 1970 (Cmnd. 2864), presented to Parliament on 25th January by my right hon. Friend the Secretary of State for Scotland, sets out the circumstances in which it has been decided to increase the programme in Scotland from the present level of 30,000 acres a year to 36,000 acres a year from 1969 onwards.”

PLANTING

12. New planting by the Commission totalled just over 48,000 acres. In addition over 5,500 acres were re-stocked to replace plantations felled in the normal course of management or lost due to fire and other causes. The total area planted was thus maintained at about the same level as in 1964. On the whole, open and mild weather provided favourable conditions for the new planting and for the establishment of plantations made in previous years.

ACQUISITION OF LAND

13. Scotland provided by far the major part of the addition to the Commission's estate. Land acquisitions in England were negligible and they continued to be most disappointing in Wales. The increased Scottish planting programme will require a steady flow of acquisitions in the uplands generally, but especially in the Highlands. A marked increase in acquisitions will be needed in Wales to maintain planting at an acceptable level.

HARVESTING AND MARKETING

14. Production increases year by year as the forests created by the Commission since 1919 grow towards maturity. In 1965 output from thinnings and clear fellings rose by over 8 per cent to a total of 28·4 million hoppus feet, which is the equivalent of about one million tons.

15. The high demand for wood and wood products continued during the year and there was a noticeable hardening of prices. The average price which the Commission received for standing softwood timber increased by over 3 per cent compared with the previous year.

16. In June, 1965, the ceremony of felling the first pulpwood tree for the Scottish Pulp and Paper Mills Ltd. undertaking at Fort William took place in the Commission's Inchnacardoch Forest and was performed by Major Sir John Stirling of Fairburn, formerly a Forestry Commissioner. Supplies for the mill will be drawn from many Commission and privately-owned forests over a wide area. The Commission's contribution alone, by the end of 1966, was expected to reach a monthly rate of 11,000 tons of pulpwood, or about 550 tons a day.

FINANCE

17. Receipts increased by £712,000 to £4,615,000 and payments by £417,000 to £17,956,000. Drawings from funds voted by Parliament increased by £55,000 to £13,565,000. The customary annual statements are included in Appendix II (Tables 1–5) of this report, with a commentary on the year's financial results in paragraphs 35 to 46 of the section dealing with the year's work.

18. The form of the Commission's public accounts has been revised in consultation with the Treasury and the Comptroller and Auditor General with two main objects:—

- (a) To distinguish between the operation of the forest enterprise (namely, the formation and maintenance of state-owned forests and the harvesting of the crop) and the Commission's other activities, such as the administration of aid to private woodland owners, and research.
- (b) To present the accounts for the forest enterprise so as to identify the cost of the formation of forests, the returns from the harvesting of the crop and the results of the management of the Commission's estates.

The resulting changes will be reflected in the accounts published in next year's report.

19. A comprehensive review of the system of internal budgetary control is being carried out within the Commission in the light of the re-organisation and the needs of management. A Costing Branch has also been established in the Finance Division; a Steering Committee co-ordinates the programme of the Branch with the activities of the Work Study and Planning and Economics Branches.

FORESTRY AND THE COUNTRYSIDE

20. While the Commission's primary function is to produce timber to help to meet the steadily increasing demands of industry, there is growing recognition both inside and outside the Commission of the part which the forests can and should play in improving the landscape and in providing the opportunities for open-air recreation which are now so eagerly sought by the public throughout Great Britain. Amenity and recreation are closely linked, and in the light of the Government's White Paper on Leisure in the Countryside attention will in future be focussed on them more strongly than ever.

21. The Commission are pioneers in one aspect of amenity. Thirty years ago the first Forest Park was created—in Argyll—and this has been followed by the opening of six others. In these Parks, and in other areas under the Commission's control, opportunities are provided for hill-climbing, sailing, shooting, pony-trekking and nature study. Large tracts of the Commission's land are admirably suited for adventure-training for the youth of the country, while the nature trails which have been specially laid out provide exercise and education for the less energetic. During the year under report, which was by no means favourable from the point of view of weather, nearly 600,000 people stayed overnight at the major camping and caravan sites which the Commission has provided in many parts of the country; while it is estimated that nearly four million people picnicked in the Commission's forests, mostly on the special picnic sites which have been warmly welcomed by the public.

22. One of the major problems is the provision of car parks which are adequate for the demand and at the same time do not spoil the natural amenities

of the forests. Natural forest car parks* are being introduced on the principle that much can be done by way of using the forests themselves to screen and camouflage the ranks of cars which would otherwise detract from the unspoilt beauty of the scenery.

23. There is still scope for the extension and improvement of these and other facilities for the public, and every effort will be made to meet the demand within the limit of the resources at the Commission's disposal. As the largest land managers in the country the Commission have much to offer in the magnificent scenery and great variety of wild life of which they are the custodians, and they hope that what they are doing to combine forestry, recreation, visual amenity and nature conservation will be recognised as a practical demonstration of multiple land use.

24. Close liaison continues to be maintained with the Nature Conservancy and the National Parks Commission—at the highest level as well as in the field—on all matters of mutual interest affecting the countryside.

PRIVATE FORESTRY

25. The area planted by private owners under the Commission's various grant schemes totalled 31,200 acres; with the estimated area of about 1,700 acres planted without the aid of grants, the total contribution of the private sector to the increase in the effective forest area in the country amounted to nearly 33,000 acres. This was only about 700 acres short of the area planted in the previous year, and was continuing evidence of the private landowners' confidence in the future prospects of forestry as an asset in the economy of estate management. The area dedicated rose to over 826,000 acres; with over 163,000 acres in the approved woodlands scheme and a total of over 38,000 acres in the dedication pipeline, the total acreage of private woodlands under management, both with and without grant aid, approached the one million mark.

26. A new census of private woodlands is being undertaken by the Commission. This will cover private woodlands only, and the main purpose will be to make an appraisal of their extent and productive capacity. The census will be on a sample basis of about one acre in every seven of the woodlands and will also include an assessment of the timber volume in hedgerow and park trees in central and southern England. Work started during the summer of 1965, and it is hoped to complete the census towards the end of 1966.

HOME GROWN TIMBER ADVISORY COMMITTEE

27. In May, 1965, the Committee was formally recognised by the forestry Ministers as competent to advise on all aspects of forestry in this country. The Commissioners welcome this important development in the evolution of the Committee, whose advice to them will be transmitted to the forestry Ministers whenever the Committee so desires.†

28. The Committee's own Annual Report for 1965 is presented in this report as Appendix I on pages 23 to 25. In January, 1966, Professor H. M. Steven

* Plate 8, centre pages.

† *Eighth Special Report from the Estimates Committee, Session 1964-65: The Forestry Commission* (Departmental Observations on the Seventh Report from the Estimates Committee in Session 1963-64). H.M.S.O., 9d.

resigned his Chairmanship of the Committee owing to ill-health, and was succeeded by Mr. F. A. Bishop, formerly Permanent Secretary at the Ministry of Land and Natural Resources. The Commissioners would like to pay tribute to Professor Steven's distinguished services to forestry, which culminated in his Chairmanship of the Home Grown Timber Advisory Committee when the Committee became an independent advisory body in 1963. His sound guidance and his wide understanding of the problems of the industry ensured the Committee the best possible start in its reconstituted form.

THE YEAR'S WORK

PRIVATE FORESTRY

29. Private owners planted 31,201 acres under the Commission's various grant schemes. It is estimated that in addition about 1,743 acres were planted without the aid of grants. The total area planted on private estates was thus about 32,944 acres.

30. The area dedicated rose by 35,427 acres to 826,811 acres, and the number of dedication schemes by 128 to 2,719. Preparations for dedicating a further 38,201 acres, representing 157 schemes, were well advanced. The total area covered by approved plans of operations under the Approved Woodlands Scheme rose by 2,091 acres to 163,508 acres and the number of schemes increased by 27 to 692; plans of operations for a further 680 acres (7 schemes) were in hand.

MARKETS AND PRICES

31. The high demand for wood and wood products continued in Europe during the year, and there was a noticeable hardening of prices. The prices of imported sawn softwood, pulpwood and pitwood increased by 8·6 per cent, 2 per cent and 12 per cent respectively.

32. The production of home-grown pulpwood and sawn softwoods increased by 15 per cent and by 2 per cent respectively, but the production of home-grown hardwoods (other than mining timber) decreased by 6 per cent, a reduction of 900,000 cubic feet. Sales from the Commission's forests, at 27 million hoppus feet, were 8·6 per cent higher than in 1964.

33. The average price which the Commission received for standing softwood timber increased by over 3 per cent compared with 1964, as shown in the following table:—

	<i>Great Britain</i>	<i>England</i>	<i>Scotland</i>	<i>Wales</i>
1964	1s. 3·5d.	1s. 5·3d.	1s. 1·7d.	1s. 5·0d.
1965 ...	1s. 4·0d.	1s. 5·9d.	1s. 2·2d.	1s. 6·0d.
Increase %	3·2	3·5	3·7	5·9

34. New price agreements for mining timber were negotiated between the National Coal Board and the home timber merchants' Associations, to operate from 1st October, 1965, for one year. Under the new agreement, the price of peeled pitprops delivered to collieries in England and Wales is 5s. 10½d. (previously 5s. 8d.) and in Scotland 5s. 9d. (previously 5s. 6½d.). The price for unpeeled pitprops sold by length will be increased proportionately and, as before, will be 12½ per cent below the new prices for peeled pitprops. Agreement was also reached on certain other categories of hardwood and softwood sawn mining timber with price increases ranging between 2·3 per cent and 5·5 per cent.

FORESTRY COMMISSION OPERATIONS

Finance

35. The customary annual statements are included in Appendix II (Tables 1-5).

Forestry Operations (Table 2)

36. The net cost of managing the Commission's forestry enterprise was £21,017,000, an increase of £1,713,000 on the previous year's figure. Interest charges showed an increase of £1,972,000, but this was offset by a reduction of £259,000 in operating costs. Income from forest produce showed a gross surplus of £2,154,000 compared with £1,787,000 in the previous year, while sundry forestry income increased by £150,000. Overheads were £320,000 higher than in 1964, owing mainly to increases in salary scales.

Nurseries (Table 3)

37. The net cost of nurseries charged to forestry operations was £152,000 lower than in 1964. Operating costs were reduced by £35,000 and the value of stocks increased by £37,000 compared with a decrease of £82,000 in the previous year.

Private Forestry and Other Services (Table 4)

38. Expenditure on private forestry showed a net decrease of £39,000, a reduction of £76,000 in payments of grants being offset by an increase of £37,000 in administration costs. The decrease of £30,000 in payments of Management Grants, as compared with the previous year, was due to the overtaking of arrears; payments in respect of the current year were in fact £5,000 higher than those actually arising in the previous year.

39. The increase of £68,000 in the total cost of Research included increases of £16,000 on Work Study, of £22,000 on administration (owing to increases in salary scales), and of £5,000 in grants to institutions.

40. The increase of £44,000 in the total cost of Education arose from an increase of £14,000 in administration costs (mainly in salaries) and from an increase of £29,000 on the Forest Worker Training Scheme, which was expanded during the year.

Balance Sheet (Table 5)

41. Grants appropriated for the forestry enterprises amounted to £11,151,000, £21,000 less than in 1964; interest liability increased by £12,855,000 and there was a total increase in the capital invested of £24,029,000 accounted for as follows:—

	£
Increase in fixed assets	3,297,000
Increase in the cost value of the forests ...	21,060,000
Increase in current assets	574,000
	<hr/>
	24,931,000
<i>Less: Increase in liabilities ...</i>	902,000
	<hr/>
	24,029,000
	<hr/>

42. The increase of £3,297,000 in fixed assets was distributed over all categories but was slightly lower than in the previous year. Over half of the expenditure during the year on roads and bridges was in Scotland.

43. Of the amount of £518,000 accounted for by net additions to the value of buildings during the year, £240,000 was for new houses (mainly for Foresters). The modernisation and improvement of houses (mainly for forest workers) cost £113,000, and £193,000 was spent on other works (including £6,000 for new camp sites). The net value of buildings sold amounted to £28,000 and, with depreciation of £215,000, the net book value of buildings at the end of the year was £9,759,000.

44. The gross cost of powered vehicles and machines purchased in the year was £558,000, comprising £404,000 on the replacement of items which had no further useful life, and £154,000 on additional items. The book value of items disposed of amounted to £70,000, leaving a net cost of £488,000.

45. Current assets showed an increase of £574,000, accounted for mainly by an increase in cash and bank balances of £231,000 and £293,000 in debtors and debit balances.

46. Provisions for pensions and gratuities is based on an actuarial calculation of the annual charge needed to provide for the eventual liability (from which payments made during the year are deducted). The provision made to date is due for review by the Government Actuary. The Insurance Account is an accounting arrangement designed to equalise the fluctuating annual losses from damage by fire, which have ranged during the last ten years from £10,000 to £130,000.

Staff

47. At 30th September, 1965, the Commission's non-industrial staff totalled 2,759 as compared with 2,777 a year earlier: of these one-half were in the Forester grades. The number of industrial employees was 10,853 against 10,973 a year earlier: the reduction was again due to mechanisation and improved efficiency, leading to increased productivity. Dismissals were not entailed, the reduction being achieved by the normal wastage due to retirements.

48. On 21st December, 1964, an increase of 10s. 6d. in the basic weekly wage for adult industrial workers was agreed, bringing the basic weekly wage to £10. 6s. 6d.

49. At the end of the year, a claim, submitted by the Trade Union side of the Industrial and Trade Council for an increase in the basic weekly wage and a reduction in working hours was under consideration.

Acquisition of Land

50. The gross area acquired (including land to which entry was taken, by vendor's permission, in advance of legal completion) was 66,265 acres of which 33,295 acres were plantable. Disposals of land and adjustments on re-survey totalled 17,093 acres, of which 2,468 acres were plantable, the remainder being unplantable or grazing and other agricultural land. The net addition to the Commission's estate was 49,172 acres (Table 9) of which 31,332 acres were forest land (Table 8). At the end of the year the Commission's whole estate

totalled 2,655,260 acres (Table 6) of which 1,859,498 acres were forest land. The average price paid for plantable land was £8. 12s. per acre, just over £1 per acre more than in 1964.

Planting

51. The total area planted was 53,684 acres, 580 acres less than in 1964: of this 13,516 acres were in England, 30,545 acres were in Scotland and 9,623 acres were in Wales.

Production and Disposal of Forest Produce

52. Thinnings and clear fellings in Commission forests produced 28.4 million hoppus feet, an increase of 2.1 million hoppus feet compared with the previous year. The timber trade felled 15.1 million hoppus feet of the total production, the same volume as in the previous year.

53. During the year, contracts were in force for sales of standing timber and thinnings totalling 20.7 million hoppus feet, 1.1 million hoppus feet more than in the previous year.

Forest Management

54. Working plan surveys were completed for 232,000 acres, bringing the total area surveyed since 1957 to 1,397,000 acres. Further soil surveys with the object of assessing wind stability were carried out in the Border Forests.

55. Management tables, which will provide data for forecasting and controlling yield and for assessing the long-term economic evaluation of tree growth, were completed and prepared for publication.* Work was begun on a mensuration booklet to give guidance on tree and timber measuring.

56. Operational research techniques were introduced, and computer programmes were prepared for two planning projects.

Research†

57. Special attention was paid during the year to factors affecting site amelioration in the forest. Nutritional problems in forest nurseries were followed-up in the light of the emergence of new techniques to improve the yield and the growth of seedlings. Further studies were carried out on the protection of stumps by chemical and biological control to prevent fungal attack, and work continued on potential insect attacks and on the biology of deer and grey squirrels.

Work Study

58. The main effort continued to be concentrated on production methods and timber handling. The secondary effort was devoted to the mechanisation of forest operations, with special attention to extraction. An intensive study of weeding, including comparisons of hand, machine and chemical methods, was started.

Engineering

59. During the year 514 miles of road were completed to the final standard and 136 miles to the initial standard, giving a total mileage of 8,634. In Scotland, the accelerated road programme kept in step with the requirements for the

* Forestry Commission Booklet 16. *Forest Management Tables*. H.M.S.O. 1966. 30s. 0d. (31s. 1d. including postage).

† A separate report on research is published annually (see paragraph 66).

delivery of pulpwood to the mill at Fort William. In Wales, progress was made in overtaking arrears in bridge construction, and in the reduction of quarry costs. The continuing emphasis on improved methods of road construction led to an increase in the number of mobile stone crushers in use in England and Wales, the wider use of vibrating rollers and powered graders and the introduction of hydraulic excavators.

Education and Training

60. At the start of the year there were 119 students in residence at the four Forester Training Schools; new students numbered 53. A second special six months' course for foresters from former British territories in Africa was organised. It was attended by 18 students from six countries, all of whom completed the course satisfactorily and were awarded certificates. A third course will be held in 1966.

61. The Benmore Forester Training School in Argyll was closed in July 1965. The three remaining Schools at Pitlochry, Gwydyr and Parkend have adequate accommodation and training facilities to meet both the Commission's future needs as well as those for overseas foresters.

62. During the year, 2,941 forest workers attended 671 courses organised under the scheme for the basic training of forest workers. The courses covered a variety of subjects including tool maintenance, brashing, fencing, the use of power saws, thinning, planting and the upkeep of drains.

63. The Commission nominated 37 workers to attend the two six-week courses for young forest workers which were held at the Newton Rigg Farm School, administered by the Cumberland and Westmorland Education Authority. Later in the year two more courses were held at the School for 39 entrants to the Forester Training Schools.

64. For woodmen and foresters from private estates in Scotland, the Commission provided lecturers for two six-week courses administered by local Education Authorities, and organised three three-day courses on management, surveying and mechanical equipment.

Forest Fires

65. Although there were no major outbreaks, the area of plantations burnt in the year rose to 784 acres from 465 acres in 1964. The value of the damage to plantations caused by fires and the cost of extinguishing them totalled £77,400 (against £45,600 in 1964). The number of fires fell from 1,155 to 863, but the proportion believed to be caused by members of the public rose from 13% in 1964 to 23%; this increase emphasised yet again the need for constant care on the part of all those who enjoy the Commission's forests for recreation.

Publications

66. Eleven new publications were issued through Her Majesty's Stationery Office:—

Forty-fifth Annual Report of the Forestry Commissioners, 1964 (H.C. 218, Session 1964-65) (8s. 6d.)

Bulletin 37. Experiments on Nutrition Problems in Forest Nurseries. Miss Blanche Benzian. (Vol. 1 50s., Vol. 2 20s.)

Forest Records:

- No. 52 Home Grown Roundwood. B. W. Holtam (3s.)
No. 53 Studies on the Mineral Nutrient Status of Heather, *Calluna vulgaris*. J. R. Aaron (2s. 0d.)
No. 54 Decay in Standing Conifers Developing from Extraction Damage. R. G. Pawsey and R. J. Gladman (3s. 6d.)
No. 55 Death of Pedunculate Oak and Variations in Annual Increments in Relation to Climate. C. W. T. Young (3s. 0d.)
No. 56 Report of the International Advisory Group of Forest Statisticians, 1963. J. N. R. Jeffers (1s. 0d.).

Booklets:

- No. 10 The New Forests of Dartmoor. G. D. Rouse (2s. 6d.).
No. 13 Principal Butt Rots of Conifers. R. J. Gladman and B. J. W. Greig (2s. 3d.).
No. 14 Rabbit Control in Woodlands. E. V. Rogers (3s. 0d.).

Leaflet:

- No. 51 Chemical Control of Weeds in the Forest. J. R. Aldhous (1s. 6d.).

A major revision was made of Bulletin 14, Forestry Practice, edited by H. L. Edlin (5s. 6d.). This is a standard guide for landowners, estate agents and foresters, on methods of establishing forest nurseries and plantations.

In addition, twenty-nine other publications were revised and re-issued.

LESLIE A. W. JENKINS, *Chairman*.
HENRY BERESFORD-PEIRSE,
Deputy Chairman and Director General.
CARLISLE.
M. COMPTON.
E. GWYN DAVIES.
J. A. DICKSON.
F. SELLERS.
F. W. STRANG STEEL.
TOM TAYLOR.
A. WATT.

FORESTRY COMMISSION,
25, Savile Row,
London, W.1.

COMMITTEES

NATIONAL COMMITTEES

The membership of these Committees at 30th September, 1965, was as follows:—

ENGLAND

The Earl of Carlisle (*Chairman*), Col. M. E. St. J. Barne, Mr. C. M. Floyd, Mr. F. Sellers. *Secretary to the Committee*: Mr. A. B. Westcott.

(Mr. G. E. H. Palmer was Chairman until 28th September, 1965. Mr. V. Feather and Mr. A. Watt were appointed to fill vacancies on 3rd January, 1966. Miss M. J. Eden has succeeded Mr. Westcott as Secretary).

SCOTLAND

Major Sir William Strang Steel, Bt. (*Chairman*), Mr. A. Gordon Chalmers, Captain J. Craig, Mr. J. McNaughton, Mr. T. Taylor. *Secretary to the Committee*. Mr. T. H. McGeorge.

(At the beginning of the year Major D. C. Bowser was Chairman and he held this post until his retirement. Mr. Forrest was appointed on 3rd January, 1966. Mr. M. Nicolson has succeeded Mr. McGeorge as Secretary).

WALES

Alderman E. Gwynfryn Davies (*Chairman*), Mr. M. L. Bourdillon, Mr. J. E. Lewis, Mr. F. Sellers, Mr. P. R. D. Spurgin. *Secretary to the Committee*: Mr. G. F. Taylor.

(Col. J. F. Williams Wynne was a member until his retirement as a Forestry Commissioner. Mr. J. Q. Williamson was appointed to the Committee on 3rd January, 1966. Mr. J. R. Hampson has succeeded Mr. Taylor as Secretary).

REGIONAL ADVISORY COMMITTEES

The membership of the Committees at 30th September, 1965, was as follows:—

ENGLAND

North-West Conservancy

The Earl of Bradford (*Chairman*), Mr. J. L. Benson, The Earl of Lonsdale, Mr. H. W. D. Pollock, Mr. R. I. Price, Mr. H. C. M. Tapper, Mr. C. J. Venables, Mr. D. H. White. *Secretary to the Committee*: Mr. J. W. Elliot. The Committee met in October, 1964, and July, 1965.

North-East Conservancy

Mr. J. T. Trevelyan (*Chairman*), Professor J. S. Allen, Lord Bolton, Mr. S. Earnshaw, Mr. T. R. F. Fenwick, Mr. R. H. B. Hamersley, Mr. W. P. Hedley, Mr. R. Stanley, Mr. H. Wardale. *Secretary to the Committee*: Mr. L. A. Chaplin. The Committee met in June, 1965.

East Conservancy

Major R. B. Verney (*Chairman*), Mr. A. Bayne, Mr. S. E. Gurney, Mr. J. C. P. Langton, Mr. F. C. Osmaston, Mr. M. G. Reade, Mr. C. G. Soames, Mr. C. H. Walker, The Earl of Yarborough. *Secretary to the Committee*: Mr. A. J. Searle. The Committee met in December, 1964, and May, 1965.

South-East Conservancy

Col. Sir Ralph S. Clarke (*Chairman*), Mr. A. E. Aitkins, Mr. G. E. H. Calvert, Mr. T. J. Daniel, Mr. M. A. C. Drummond, Mr. J. P. Goring, Mr. E. J. B. Hardcastle, Mr. P. H. L. Hills, Lt.-Col. Sir William Mount, Bt. *Secretary to the Committee*: Mr. H. W. Gulliver. The Committee met in October, 1964, and February, 1965.

South-West Conservancy

Sir Dennis F. B. Stucley, Bt. (*Chairman*), Brig. A. F. L. Clive, Mr. J. E. Garfitt, Mr. H. P. R. Hoare, Lord Hylton, Mr. N. D. G. James, Major J. L. Pilling, Mr. W. G. Sheppard, Mr. J. C. Wolridge. *Secretary to the Committee*: Mr. R. Coote. The Committee met in October, 1964.

SCOTLAND

North Conservancy

Mr. A. B. L. Munro-Ferguson (*Chairman*), Mr. J. Armstrong, Col. A. E. Cameron, Mr. R. G. D. Clarke, Mr. J. Evans, Mr. A. N. S. Kinnear, Mr. W. Ross, Mr. H. D. Skinner, Mr. R. Stirling. *Secretary to the Committee*: Mr. T. S. B. Macbeath. The Committee met in December, 1964, and May, 1965.

East Conservancy

Lt.-Col. J. W. Nicol (*Chairman*), Mrs. J. C. Balfour, Mr. J. R. Cordiner, Mr. J. B. Hendry, Mr. J. Hinselwood, Sir Ian Forbes Leith, Bt., Mr. A. Duncan Millar, Major R. N. Jardine Paterson, Mr. W. J. Riddoch. *Secretary to the Committee*: Mr. J. Steele. The Committee met in November, 1964, and May, 1965.

South Conservancy

Major Simon F. Macdonald Lockhart (*Chairman*), Mr. H. Crawford, Sir Arthur B. Duncan, Mr. T. Y. Gibson, Mr. S. E. A. Landale, Mr. J. H. Mackay, Mr. D. M. McQueen, Mr. R. Finlay Wilson, Capt. J. M. A. Yerburgh. *Secretary to the Committee*: Mr. T. Farmer. The Committee met in November, 1964, March and September, 1965.

West Conservancy

Sir Ronald A. Orr-Ewing, Bt. (*Chairman*), Capt. D. S. Bowser, Capt. P. Lorne Mackie-Campbell, Mr. J. Grant, Mr. P. McAinsh, Major Neil Mackinnon, Mr. J. MacVicar, Mr. P. Tennant. *Secretary to the Committee*: Mr. J. B. Wharam. The Committee met in March and May, 1965.

WALES

North Conservancy

Professor E. C. Mobbs (*Chairman*), Mr. R. W. Allan, Mr. B. J. Crichton, Mr. Gwilym Davies, Capt. G. L. Bennett-Evans, Mr. P. Harwood, Mr. C. L. J. Humphreys, Major-General L. O. Pugh, Mr. Langshaw Rowland. *Secretary to the Committee*: Mr. K. Mayhew. The Committee met in November, 1964, and June, 1965.

South Conservancy

Col. Sir Cennydd G. Traherne (*Chairman*), Mr. D. G. Badham, Mr. Bryn Davies, Viscount Emlyn, Mr. B. Feaver, Mr. A. J. Birt Llewellyn, Mr. A. J. D. Llewellyn, Brigadier R. P. Waller. *Secretary to the Committee*: Mr. W. R. Doherty. The Committee met in September, 1964, and March, 1965.

HOME GROWN TIMBER ADVISORY COMMITTEE

The membership of the Committee at 30th September, 1965, was as follows:—

- | | | |
|-----------------------------------|--------|--|
| Professor H. M. Steven | | Chairman |
| The Earl of Bradford | | } Timber Growers Organisation,
Ltd. |
| Lt.-Col. Sir William Mount, Bt... | | |
| Sir Dennis Stucley, Bt. | | |
| The Viscount Emlyn | | |
| Mr. A. L. P. F. Wallace | | } Scottish Woodland Owners
Association, Ltd. |
| The Duke of Buccleuch | | |
| Major R. N. Jardine Paterson | | |
| Mr. J. E. Tilley | | } Home Timber Merchants
Association of England and
Wales |
| Mr. J. R. Maer, Jnr. | | |
| Mr. T. W. White | | |
| Mr. R. Finlay Wilson | | } Home Timber Merchants
Association of Scotland |
| Mr. T. Y. Gibson | | |
| Mr. T. Bruce Jones | | |
| Mr. J. B. Dawson | | Timber Trades Federation |
| Mr. H. Richardson | | Timber Research and Development
Association, Ltd. |
| Mr. E. S. Taylor | | Independent member |

Joint Secretaries: Mr. J. J. V. Summers
Mr. B. W. Holtam

The Chairman of the Commission and senior officials (later full-time Commissioners) were present during meetings of the Committee. The Director of the Forest Products Research Laboratory and a senior official of the Board of Trade also attended.

The Committee met in October, 1964, and January, March, April and July, 1965. For its Annual Report, see Appendix I (pages 23 to 25).

Sub-Committees of the Home Grown Timber Advisory Committee

Utilisation Committee

The membership of the Committee at 30th September, 1965, was as follows:—

- | | | |
|--------------------|--------|---|
| Mr. W. T. Rochelle | | Home Timber Merchants Association
of England and Wales |
| Mr. A. E. Aitkins | | } Timber Growers Organisation, Ltd. |
| Mr. N. H. Gore... | | |

Mr. H. Richardson	Timber Research and Development Association, Ltd.
Major S. F. Macdonald Lockhart	Scottish Woodland Owners Association, Ltd.
Mr. T. H. Woolridge	Society of Foresters of Great Britain
Mr. W. D. Butler	Home Grown Timber Marketing Corporation, Ltd.
Mr. T. Smith Jnr.	... Home Timber Merchants Association of Scotland
Mr. A. G. Waterman	... British Wood Preserving Association
Mr. W. G. Trust Rural Industries Bureau

Secretary: Mr. B. W. Holtam

The Committee met in November, 1964, and July, 1965.

Pitwood Committee

The membership of the Committee at 30th September, 1965, was as follows:—

Mr. A. L. P. F. Wallace...	... Scottish Woodland Owners Association, Ltd. (<i>Chairman of the Committee</i>)
The Viscount Emlyn	Timber Growers Organisation, Ltd.
Mr. J. R. Maer Home Timber Merchants Association of England and Wales
Mr. T. Bruce Jones	... Home Timber Merchants Association of Scotland

Secretary: Mrs. M. E. Alison

The Committee met in January, July and October, 1965.

MECHANICAL DEVELOPMENT COMMITTEE

The membership of the Committee at 30th September, 1965, was as follows:—

Mr. G. B. Ryle Deputy Director General, Forestry Commission	
		<i>(Chairman of the Committee)</i>
Mr. A. Watt	}
Mr. E. G. Richards	
Mr. E. H. Macmillen	
Mr. L. C. Troup	
Mr. D. M. Beaton	
Mr. C. D. MacMahon	
Mr. E. F. Granfield	Forestry Commission
Mr. J. E. Tilley Home Timber Merchants Association of England and Wales	
Mr. David Brown	... Home Timber Merchants Association of Scotland	
Mr. H. J. Hamblin	... National Institute of Agricultural Engineering	

Mr. E. R. Huggard ... Society of Foresters of Great Britain
The Hon. James Bruce ... Scottish Woodland Owners Association,
Ltd.
Mr. D. H. West ... Timber Growers Organisation, Ltd.

Secretary: Col. R. G. Shaw.

The Committee met in October, 1964, and April, 1965.

ADVISORY COMMITTEE ON FOREST RESEARCH

At 30th September, 1965, the membership of the Committee was as follows:—

Mr. F. C. Bawden
Mr. J. Bryan
Professor M. V. Laurie
Professor E. C. Mobbs
Dr. A. B. Stewart
Mr. A. R. Wannop
Professor P. F. Wareing

Secretary: Mr. T. D. H. Morris.

The Committee did not meet during the year.

APPENDIX I

HOME GROWN TIMBER ADVISORY COMMITTEE

ANNUAL REPORT FOR THE YEAR ENDED 30th SEPTEMBER, 1965

Following the changes enumerated in the Committee's last Annual Report, membership at the beginning of the year under report was as follows:

Professor H. M. Steven	...	(Chairman)	
The Earl of Bradford	...	}	Timber Growers Organisation, Ltd.
Lt.-Col. Sir William Mount, Bt.	...		
Sir Dennis Stucley, Bt.	...		
The Viscount Emlyn	...		
Mr. A. F. Wallace of Canda-	...	}	Scottish Woodland Owners Association, Ltd.
craig	...		
The Duke of Buccleuch	...		
Mr. T. E. Hubbard	...	}	Home Timber Merchants Association of England and Wales
Mr. N. M. R. Moody	...		
Mr. J. E. Tilley	...		
Mr. J. R. Maer	...	}	Home Timber Merchants Association of Scotland
Mr. T. Y. Gibson	...		
Mr. T. Bruce Jones	...		
Mr. R. Finlay Wilson	...	}	Timber Trades Federation Timber Research and Development Associa- tion, Ltd.
Mr. J. B. Dawson	...		
Mr. H. Richardson	...		
Mr. E. S. Taylor	...		Independent
Mr. H. T. Weeks	...		Independent

In January, 1965, Mr. N. M. R. Moody resigned from the Committee and Mr. T. W. White was appointed in his place.

In April, 1965, Mr. T. E. Hubbard resigned, and was replaced by Major R. N. Jardine Paterson.

Mr. H. T. Weeks resigned in September, 1965.

In their observations, published in May, 1965, on the recommendations contained in the Seventh Report from the Estimates Committee in Session 1963-64, the Minister of Land and Natural Resources, the Secretary of State for Scotland and the Secretary of State for Wales proposed that the Committee should be formally recognised as competent to advise on all aspects of forestry in this country. Its advice would be tendered to the Commission, but the Commission would transmit to the forestry Ministers the advice of the Committee whenever the Committee so desired.

The Committee met five times during the year. There were regular quarterly meetings on 22nd October, 1964, and 21st January, 22nd April and 15th July, 1965, and a special meeting on 4th March, 1965, for business connected with the preparation of the submission referred to below.

Matters dealt with included statistical information from the Forestry Commission and F.A.O. relating to production and sales of timber; the use of home-grown timber by the railways and for fencing on motorways and of home-grown poles by the Electricity Boards; and a communication from the Advisory Panel on the Highlands and Islands, which referred to the Committee criticisms of the quality of home-grown timber supplied in some cases to local authorities. Reports were received and studied on the E.C.E. Timber Committee and the ECE/FAO Sawmilling Symposium. Consideration was given to the possibility of organising a survey of sawmilling capacity throughout Great Britain, but this project was not pursued, partly because of the extreme difficulty of defining this capacity with any precision (the elasticity of the Scottish trade's capacity was strikingly demonstrated by its ability to cope with the sudden and manifold increase in raw material produced by the windblow of 1953) and partly because it was known that the Rural Industries Bureau was proposing to conduct, for its own purposes, an inventory of rural sawmills.

The Committee recommended that the Forestry Commission should undertake a feasibility study into the possibility of establishing an integrated industry to use low-grade hardwoods—whose marketing presents a major problem in the private sector—but this proposal was overtaken by the decision of an interested company to investigate, for its own purposes, the possibility of establishing an integrated industry to consume this type of timber.

As foreshadowed in the Committee's report for 1964, a case was prepared on the need for a more vigorous policy of afforestation in Great Britain. The collection and scrutiny of material in support of this case, and the preparation of the submission, was the major project undertaken by the committee during the year under report. The Committee made its submission to the Forestry Commission in April, 1965, and it was transmitted thence to Ministers in May, 1965; Ministers have indicated in Parliament that the submission will be taken into account in the course of the Government's review of the forestry programme.

The Committee considered a report by a Working Party which had been set up, following a plenary meeting of representatives of all Marketing Liaison Committees, to explore a proposal which had been made by the Timber Growers Organisation that the Marketing Liaison Committees should be made sub-committees of the Home Grown Timber Advisory Committee. The Marketing Liaison Committees had been set up in England and Wales to bring producers and the trade together to discuss questions of supply and demand, to consider ways of establishing soundly-based markets, and to exchange information on the practical problems of production and marketing, all on a local basis. The Working Party's report indicated that there were constitutional and other reasons why it was not appropriate for the Liaison Committees to be sub-committees of the Home Grown Timber Advisory Committee, but recommended that a co-ordinating committee consisting of one representative each of the Timber Growers Organisation, the Home Timber Merchants Association of England and Wales and the Forestry Commission should prepare, for each meeting of the Home Grown Timber Advisory Committee, a résumé of the business dealt with by the Liaison Committees; Forestry Commission Conservators should be kept in touch with the activities of the Home Grown Timber Advisory Committees and members of the Commission's staff with first-hand knowledge of the Advisory Committee's proceedings should attend M.L.C. meetings as frequently as possible as advisers. The Home Grown Timber Advisory Committee agreed to put the proposals of the Working Party into effect and has received its first résumé from the co-ordinating committee.

Under the auspices of the Committee some members visited Denmark to study methods of the utilisation of hardwoods in that country.

Towards the end of the year under report the two Timber Merchants Associations submitted papers criticising the Forestry Commission's alleged encroachment upon the interests of merchants in making direct sales of its produce to new industries and others, and in working what they suggested was too high a proportion of the produce from its woods with its own labour, particularly in England. As a result the Forestry Commission agreed to submit to the Committee a paper on the Commission's sales policy for discussion by the Committee later.

Sub-Committees

The Utilisation Committee. During the year the Committee was reconstituted so as to follow the pattern of the parent committee and the Pitwood Sub-Committee. As a result officials of the Forestry Commission and other Government Departments are no longer members, though they continue to attend as technical advisers. The Chairman of the Home Grown Timber Advisory Committee agreed to act as Chairman of the Utilisation Committee, nominating a deputy for those occasions when he was unable to take the Chair himself.

The Home Grown Timber Advisory Committee received, at its July, 1965, meeting, the report of the Utilisation Committee covering the year to 31st March, 1965, which showed continued attention to all aspects of research into the utilisation of home-grown timber. The Utilisation Committee considered a report prepared on its behalf by the Forestry Commission which had examined nearly 100 specifications, issued by Government Departments and public authorities, to see if they discriminated unfairly against the use of home-grown timber. No cases of such unfair discrimination were found.

The Pitwood Committee. This sub-committee met twice during the year—in January and July, 1965. Oral reports of its deliberations were made to meetings of the main Committee held in those months. Detailed statistics relating to world-wide pitwood prices, transport costs and potential home production of timber of mining sizes were studied. The possibility was discussed of arranging during the next round of negotiations with the National Coal Board, terms for additional services, on a national basis. In addition, the National Coal Board's Assistant Director-General (Timber and Stores) attended the July meeting and answered questions about the Board's likely future requirements and a number of allied subjects.

APPENDIX II
FINANCIAL AND STATISTICAL TABLES

FORESTRY FUND: SUMMARY

Year ended 30th September

Table 1

£

	Balance from Preceding Year	Receipts			Payments
		Total	From Parlia- mentary Votes	From Sales of Produce, Rents, etc.	
GRAND TOTAL					
1920-1965		239,096,093	181,691,800	57,404,293	238,923,373
1920-1929	—	4,421,484	3,570,000	851,484	4,502,018
1930-1939	—	8,114,652	6,292,800	1,821,852	7,926,093
1940-1949	—	26,370,778	18,945,000	7,425,778	26,238,789
1950-1959	—	104,315,023	79,023,000	25,292,023	104,144,134
1960	410,903	13,832,639	10,702,000	3,130,639	13,930,162
1961	313,380	15,511,200	12,169,000	3,342,200	15,621,481
1962	203,099	15,115,169	11,670,000	3,445,169	15,301,732
1963	16,536	15,820,533	12,245,000	3,575,533	15,763,547
1964	73,522	17,413,995	13,510,000	3,903,995	17,539,122
1965	<i>Dr.</i> 51,605	18,180,620	13,565,000	4,615,620	17,956,295
1966	172,720				

Notes.—The above amounts are cash actually received or paid out.

Table 2

ACCOUNT OF FORESTRY OPERATIONS FOR THE

1964 £000's		1965 £000's	
	Preparation and formation of plantations:—		
532	Preparation of ground including ploughing	560	
776	Planting including cost of plants	713	
514	New drains and fences	507	
			1,780
	Maintenance of plantations:—		
292	Beating up, including cost of plants	226	
1,293	Weeding and cleaning plantations	1,325	
565	Maintenance of drains and fences	521	
39	Enrichment, including cost of plants	35	
309	Maintenance of roads	371	
31	Miscellaneous	32	
			2,510
	Forest protection:—		
267	Fire protection	254	
291	Other protection	298	
			552
	Production:—		
877	Felling, extraction and processing	1,016	
268	Carriage and other expenditure ...	341	
			1,357
840	Estate expenses		878
			7,077
6,894			
	Overheads:—		
3,296	Forest (including wet time, holidays etc. of Forest Workers and salaries and expenses of Foresters) ...	3,470	
216	District (salaries and expenses of District Officers) ...	225	
744	Conservancy (salaries and expenses of Conservancy Office staff)	799	
851	Directorate and Headquarters (salaries and expenses) ...	933	
			5,427
10,883	Interest on capital advanced by the Exchequer		12,855
22,884			25,359

Table 3

NURSERIES ACCOUNT FOR THE

1964 £000's		1965 £000's
137	Seedbeds	103
189	Transplant lines	185
76	Other expenditure	83
222	Overheads	218
82	Decrease in stocks	—
		589
706		

YEAR ENDED 30TH SEPTEMBER, 1965

<i>1964</i> £000's		1965 £000's	£000's
2,773	Sales of Forest Produce	3,368	
127	Forest Produce used on the Commission's Estate...	128	
164	Sundry forestry income	314	
32	Felled timber: increase in stocks and work in progress	15	
480	Estate income ...	506	
4	Lake Vyrnwy Joint Forestry Scheme (with Liverpool Corporation)	11	
		<hr style="width: 50px; margin-left: auto; margin-right: 0;"/>	4,342
19,304	Balance, being net cost of growing timber during the year		21,017

22,884

25,359

YEAR ENDED 30TH SEPTEMBER, 1965

<i>1964</i> £000's		1965 £000's
84	Sales of plants	82
1	Sundry income	1
—	Increase in stocks	37
621	Plants used in the Commission's forests (charged in Table 2)	469
		<hr style="width: 50px; margin-left: auto; margin-right: 0;"/>
706		589
		<hr style="width: 50px; margin-left: auto; margin-right: 0;"/>

Table 4

NET EXPENDITURE ON SERVICES OTHER THAN FORESTRY OPERATIONS
DURING THE YEAR ENDED 30TH SEPTEMBER, 1965

1964 £000's		1965 £000's
	<i>PRIVATE FORESTRY</i>	
	Grants under Dedication Schemes:—	
14	Basis I	17
575	Basis II: Planting Grants ...	559
507	Management Grants	477
95	Approved Woodlands Planting Grants	82
94	Small Woods Planting Grants ...	100
1	Other Planting Grants ...	1
51	Scrub Clearance Grants	26
8	Miscellaneous	7
215	Administration including advisory services ...	252
1,560		1,521
	 <i>RESEARCH</i>	
242	Silviculture, including Nursery Work ...	249
36	Genetics	40
45	Pathology and Entomology	52
42	Work Study ...	58
19	Grants to Institutions	24
18	Statistics	21
17	Publications and Library	17
8	Photography	11
13	Westonbirt and Bedgebury Arboreta ...	14
46	Administration	68
486		554
2,046	<i>Carry forward</i>	2,075

Table 4—continued

1964 £000's		1965 £000's
2,046	<i>Brought forward ...</i>	2,075
	<i>EDUCATION</i>	
92	Forester Training Schools	96
12	Short Courses	6
7	Northerwood House	10
54	Forest Worker Training Scheme	83
47	Administration	61
212	—	256
	<i>SPECIAL SERVICES</i>	
53	Licensing of Felling ...	54
15	Information and Shows	... 17
6	Miscellaneous 3
6	Administration 9
80	—	83
2,338		2,414

Table 5

BALANCE SHEET AS AT

<i>1964</i> £000's		1965 £000's	£000's
	Capital Account:—		
<i>132,774</i>	To 30th September 1964	143,946	
<i>13,510</i>	Grants-in-aid of Forestry Fund during year	13,565	
	Deduct cost of services other than Forestry Operations (Table 4)	2,414	
<u><i>2,338</i></u>		<u>11,151</u>	
<i>143,946</i>		155,097	
<i>86,700</i>	Interest accrued...	99,555	
<u><i>230,646</i></u>			254,652
<i>975</i>	Value of properties, including New and Dean Forests, acquired under Forestry (Transfer of Woods) Orders, 1924–62 ...		980
<i>9</i>	Value at 21st September, 1939, of properties acquired under Forestry (Transfer of Woods from the Secretary of State for Air) Order 1939		9
<i>29</i>	Value of properties acquired by transfer from the Minister of Agriculture, Fisheries and Food under Section 4 of Forestry Act, 1945		29
<i>8</i>	Value of timber acquired by transfer from H.M. Board of Admiralty under Section 4 of Forestry Act, 1945		8
<i>147</i>	Gifts of land and buildings		165
<u><i>231,814</i></u>			<u>255,843</u>
<i>9,438</i>	Provision for pensions and gratuities ...		10,098
<i>848</i>	Sundry Creditors		1,099
	Insurance Account:—		
	Balance at 30th September, 1964	287	
	Provision made during year ...	59	
		<u>346</u>	
<i>287</i>	Less—Losses during year	68	278
<u><i>242,387</i></u>			<u>267,318</u>

30TH SEPTEMBER, 1965

		1965			
		At 30th Septem- ber 1964	Net Addi- tions during year	Depre- ciation for year	
<i>1964</i>	<i>£000's</i>	<i>£000's</i>	<i>£000's</i>	<i>£000's</i>	<i>£000's</i>
	Fixed Assets, at cost less Depreciation:				
	Land	6,210	365	—	6,575
	Roads and bridges	21,047	2,576	—	23,623
	Buildings	9,456	518	215	9,759
	Powered vehicles and machines ...	2,032	488	452	2,068
	Sundry plant, equipment and furni- ture	260	88	71	277
<i>39,005</i>		<u>39,005</u>	<u>4,035</u>	<u>738</u>	<u>42,302</u>
	Current Assets:—				
<i>30</i>	Farm stocks		19		
<i>1,554</i>	Nursery stocks, supplies at forests, etc. ...		1,606		
<i>520</i>	Felled timber: stocks and work in progress ...		535		
<i>670</i>	Debtors and sundry debit balances		963		
<i>279</i>	Loans to Private Woodland Owners		273		
<i>88</i>	Cash at banks and in hand		319		
			<u> </u>		3,715
	Debentures and shares:—				
<i>15</i>	Debentures in Cowal-Ari Sawmilling Co. Ltd., Argyll		15		
<i>1</i>	Shares in Parkend Saw Mills Ltd, Forest of Dean		1		
			<u> </u>		16
	Forests—Net cost of growing timber:—				
	To 30th September, 1964		200,225		
	During year:				
	Net cost transferred from Forestry Operations Account (Table 2)		21,017		
	Growing timber purchased		43		
<u><i>200,225</i></u>			<u> </u>		<u>221,285</u>
<u><i>242,387</i></u>					<u>267,318</u>

Note:—The Balance Sheet and preceding accounts have not yet been audited by the Comptroller and Auditor General.

LAND USE

Table 6

At 30th September, 1965

Acres

	Great Britain	England	Scotland	Wales
Total area	2,655,260	749,307	1,530,256	375,697
Forest Land: Total	1,859,498	623,099	912,274	324,125
Under plantations	1,550,441	547,528	721,345	281,568
To be planted	309,057	75,571	190,929	42,557
Other Land: Total	795,762	126,208	617,982	51,572
Nurseries	1,712	689	726	297
Agricultural and grazing	475,927	49,626	394,309	31,992
Forest Workers Holdings	17,638	4,840	8,261	4,537
Unplantable and miscellaneous... ..	300,485	71,053	214,686	14,746

LAND MANAGED BY THE AGRICULTURAL AND OTHER DEPARTMENTS*

Table 7

At 30th September, 1965

Acres

	Great Britain	England	Scotland	Wales
Total area	364,550	34,650	314,465	15,435
Forest land	54,326	4,137	43,700	6,489
Agricultural and other land	310,224	30,513	270,765	8,946

* Included in Table 6 above.

FOREST LAND ACQUIRED IN FOREST YEAR 1965†

Table 8

Acres

	Great Britain	England	Scotland	Wales
Total area	31,332	(- 11)	27,782	3,561
Standing woods	505	(-257)	685	77
Bare land for afforestation	11,915	246	8,451	3,218
Former woodland for replanting	18,912	—	18,646	266

† Net area acquired.



PLATE 1. Sir John Stirling of Fairburn, K.T., a former Forestry Commissioner, marks the first tree to be felled for the new Fort William paper pulp mill, in Inchnacardoch Forest, Inverness-shire, on 3rd June, 1965.

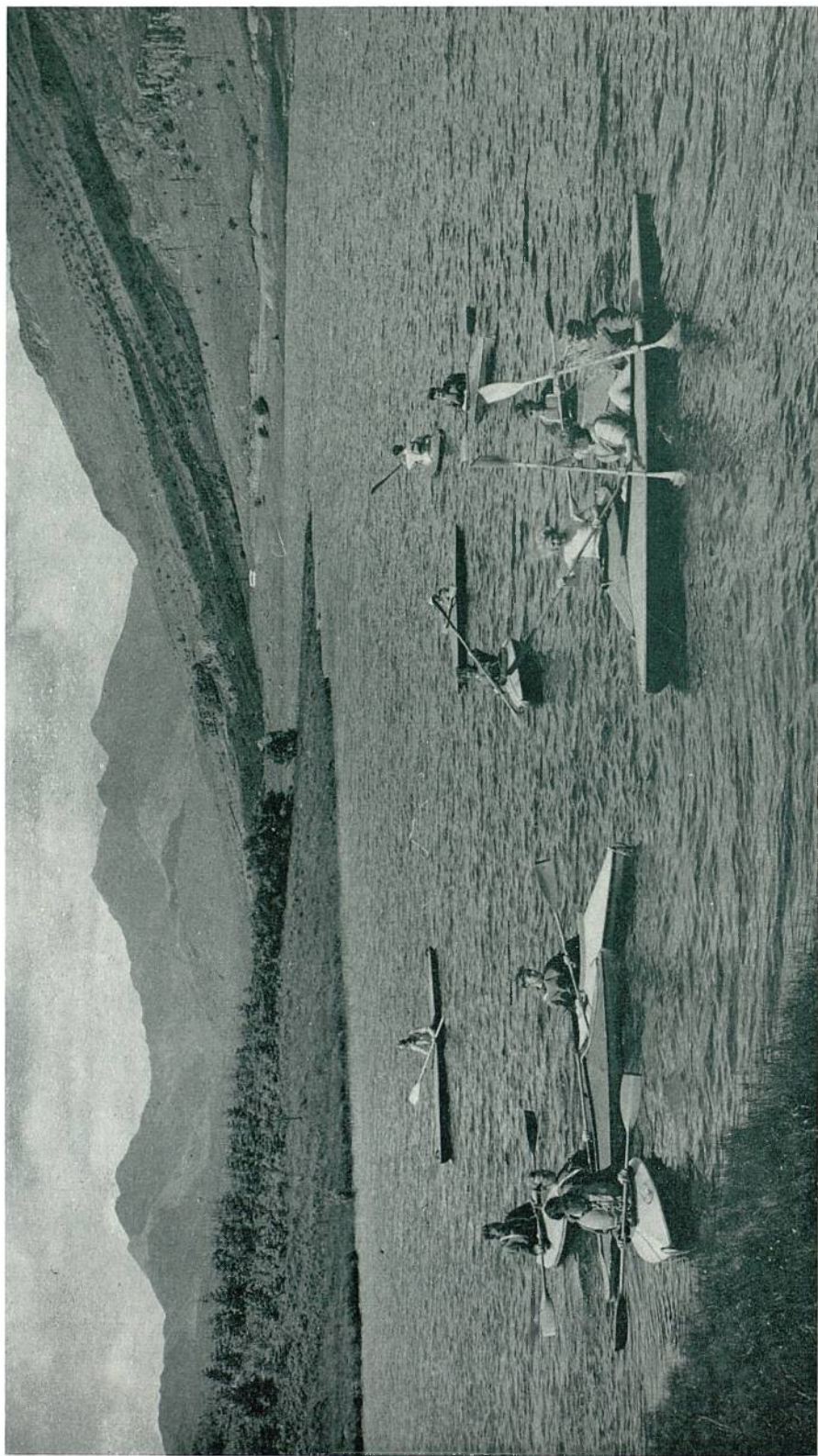


PLATE 2. Canoeists on Llyn Mymbyr, Snowdonia Forest Park, North Wales, with Snowdon rising beyond

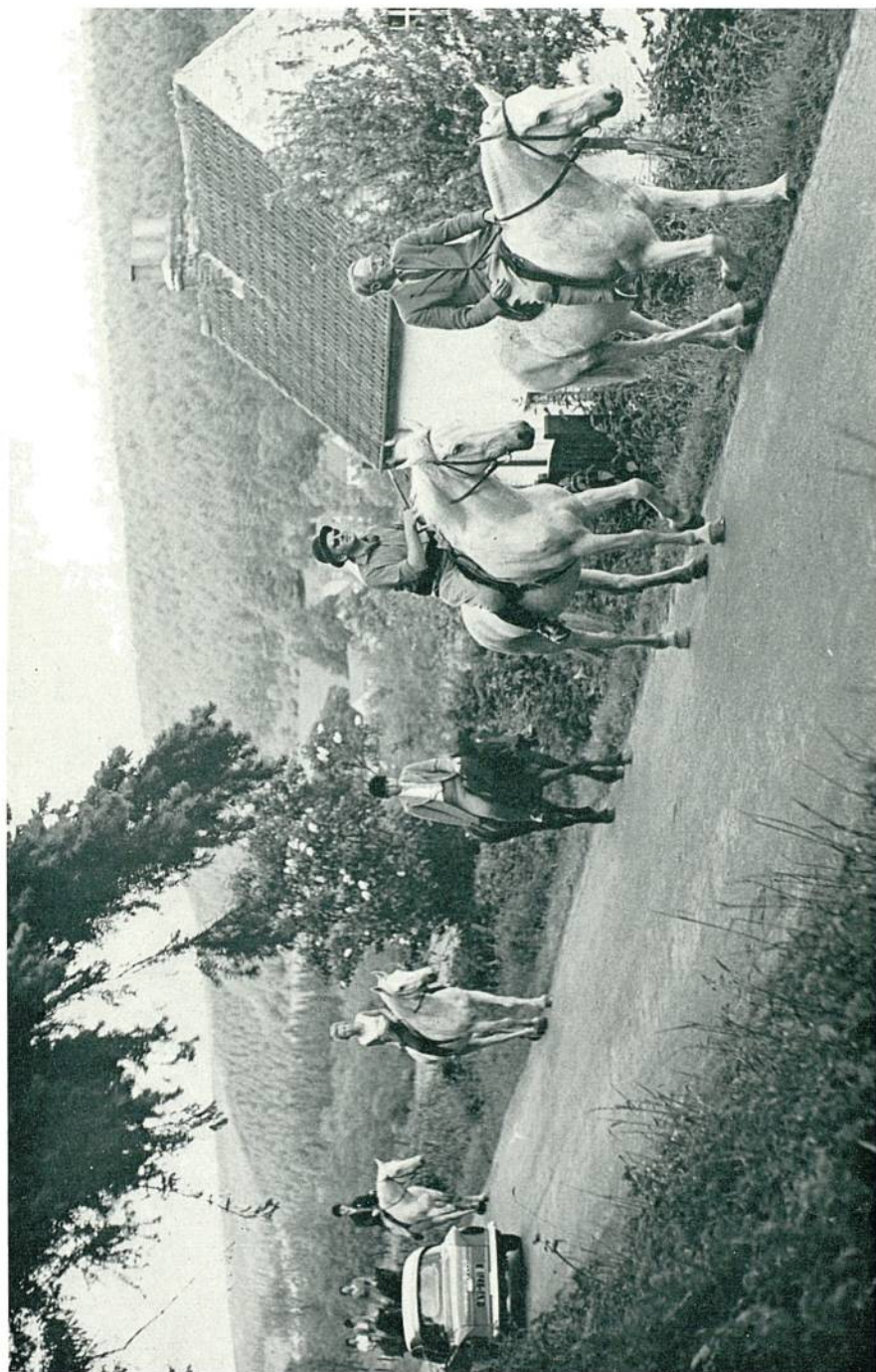


PLATE 3. Riders in Allerston Forest in the North York Moors National Park.



PLATE 4. Fishing in the River Conway, Snowdonia Forest Park, North Wales.

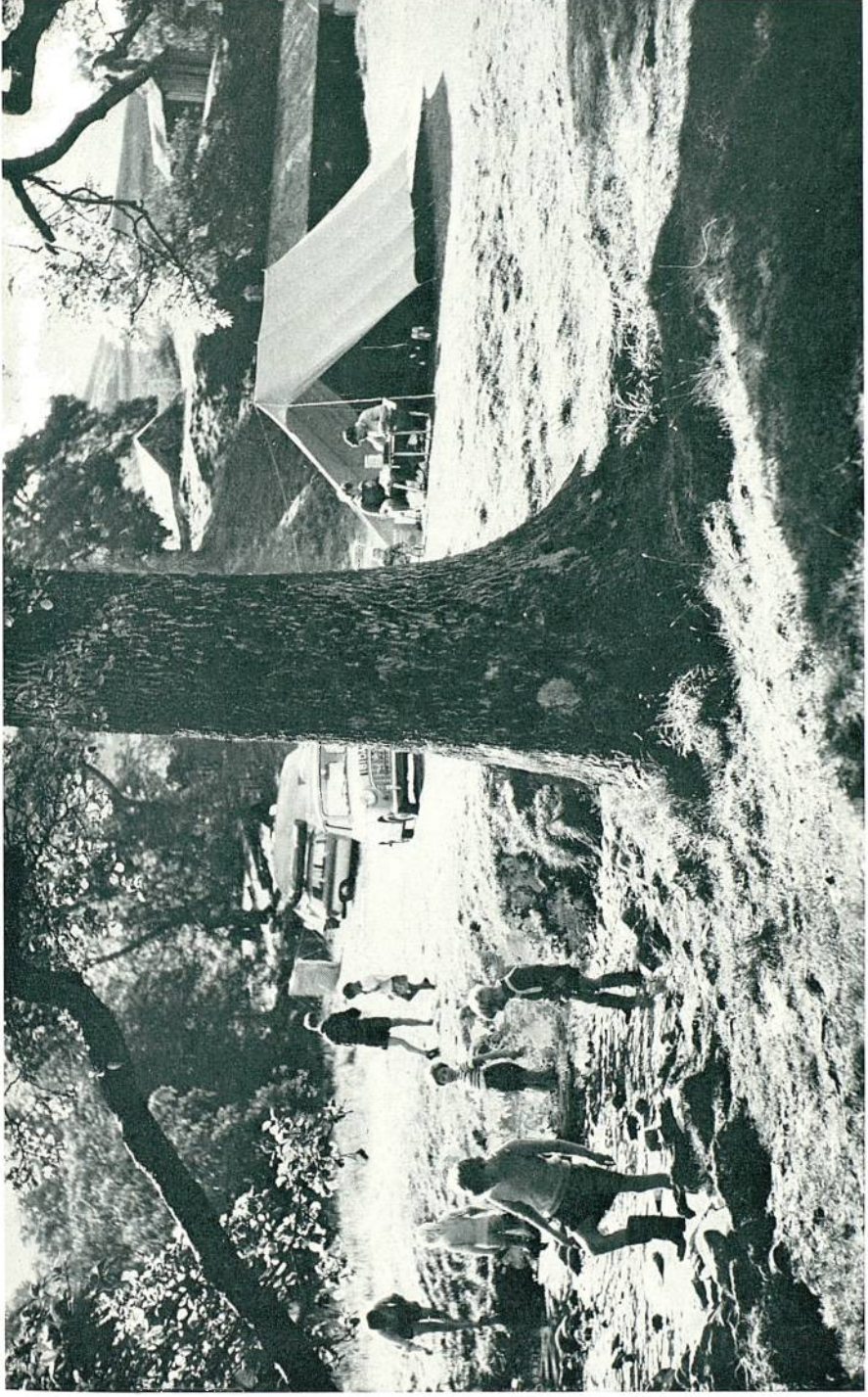


PLATE 5. At the camping ground in the Glen Trool Forest Park, Galloway, South-west Scotland.



PLATE 6. Young ramblers from a Border Forest Park camp go wayfinding over the Kielder moorlands.



PLATE 7. A badger negotiating a gate in a rabbit-proof plantation fence; this simple device saves serious damage to the wire netting.



PLATE 8. The car park at Symonds Yat, Dean Forest Park, Gloucestershire.

SUMMARY STATEMENT OF LAND ACQUIRED TO THE END OF
FOREST YEAR 1965*

Table 9

Acres

	Great Britain	England	Scotland	Wales
Total acquired	2,546,128	651,134	1,524,606	370,388
By lease or feu: Total	690,671	275,809	309,221	105,641
Forest land	524,195	251,102	186,393	86,700
Other land	166,476	24,707	122,828	18,941
By purchase: Total	1,855,457	375,325	1,215,385	264,747
Forest land	1,188,070	332,054	630,591	225,425
Other land	667,387	43,271	584,794	39,322

* Excluding Crown Woods amounting to about 110,000 acres (of which some 60,000 acres are plantable) transferred to the Commissioners under the Forestry (Transfer of Woods) Act, 1923.

STOCKS OF NURSERY PLANTS

Table 10

At 30th September, 1965

Thousand plants

	Great Britain	England	Scotland	Wales
Total stocks	390,615	102,493	231,749	56,373
Transplants	154,924	40,882	85,529	28,513
Seedlings	235,691	61,611	146,220	27,860

NURSERY PLANTS SOLD TO THE TRADE IN THE FOREST YEAR 1964

Table 11

Thousand plants

	Total	Transplants	Seedlings
All species: Total	12,335	6,434	5,901
Coniferous: Total	12,205	6,352	5,853
Scots pine	2,437	1,577	860
Corsican pine	504	200	304
Lodgepole pine	216	166	50
European larch	566	272	294
Japanese larch	1,377	400	977
Douglas fir	1,274	578	696
Norway spruce	4,014	2,191	1,823
Sitka spruce	1,001	561	440
Other conifers	816	407	409
Broadleaved: Total	130	82	48
Ash	11	4	7
Oak	39	12	27
Beech	43	39	4
Other broadleaved species	37	27	10

SEED IMPORTS BY THE FORESTRY COMMISSION IN THE FOREST YEAR 1965

Table 12

Species	Quantity (lb.)	Origin
All species: Total ...	24,768	—
Coniferous: Total ...	8,763	—
Lodgepole pine ...	91	Fort St. James, British Columbia
Lodgepole pine ...	10	Alberni, Vancouver Island, British Columbia
Lodgepole pine ...	34	Lincoln County, Oregon, U.S.A.
Lodgepole pine ...	276	Olney, Oregon, U.S.A.
Lodgepole pine ...	68	Tillamook County, Oregon, U.S.A.
Lodgepole pine ...	302	Long Beach, Washington, U.S.A.
Lodgepole pine ...	226	Hoodsport, Washington, U.S.A.
Lodgepole pine ...	4	Keyport, Washington, U.S.A.
Norway spruce ...	99	Augustow, Poland
Norway spruce ...	101	Bialowieza, Poland.
Sitka spruce ...	222	Joyce, Washington, U.S.A.
Sitka spruce ...	86	Neah Bay, Washington, U.S.A.
Sitka spruce ...	188	Clearwater, Washington, U.S.A.
Sitka spruce ...	5	Sitka, Alaska, U.S.A.
Sitka spruce ...	5	Cordova, Alaska, U.S.A.
Japanese larch ...	2,000	Hokkaido, Japan
Japanese larch ...	1,000	Nagano, Japan
European larch ...	15	Skarzysko, Poland
Western hemlock ...	14	Ketchikan, Alaska, U.S.A.
Western hemlock ...	13	Courtenay, British Columbia
Western hemlock ...	146	Nanaimo, British Columbia
Western hemlock ...	50	Alberni, British Columbia
Grand fir ...	500	Nanaimo, British Columbia
Grand fir ...	90	Columbia County, Oregon, U.S.A.
Grand fir ...	250	Skamania County, Washington, U.S.A.
Grand fir ...	750	Pe Ell, Washington, U.S.A.
Grand fir ...	775	Wind River, Washington, U.S.A.
Noble fir ...	550	Frijsenborg Estate (Hagsholm), Denmark
Noble fir ...	550	Frijsenborg Estate (Norringure), Denmark
Other conifers ...	343	—
Broadleaved: Total ...	16,005	—
Beech ...	1,000	Gdansk, Poland
Beech ...	1,000	Carpathian Mountains, Poland
Sessile oak ...	3,000	South Germany
Pedunculate oak ...	5,000	Gdansk, Poland
Pedunculate oak ...	5,000	Holland
Red oak ...	1,000	Holland
Other broadleaved ...	5	—

PLANTING IN THE FOREST YEAR 1965

Table 13

Acres

					Total	New planting	Restocking
Great Britain	53,684	48,124	5,560
Conifer	52,621	47,401	5,220
Broadleaved	1,063	723	340
England	13,516	10,319	3,197
Conifer	12,572	9,686	2,886
Broadleaved	944	633	311
Scotland	30,545	29,869	676
Conifer	30,527	29,853	674
Broadleaved	18	16	2
Wales	9,623	7,936	1,687
Conifer	9,522	7,862	1,660
Broadleaved	101	74	27

PROGRESS OF PLANTING IN THE LAST TEN FOREST YEARS 1956-1965

Table 14

Acres

Year		Great Britain	England	Scotland	Wales
1956	...	62,400	20,822	29,751	11,827
1957	...	57,881	19,332	26,696	11,853
1958	...	52,398	17,175	24,863	10,360
1959	...	55,136	17,781	25,651	11,704
1960	...	61,686	18,742	29,777	13,167
1961	...	63,693	17,930	33,282	12,481
1962	...	61,948	15,499	34,768	11,681
1963	...	55,596	12,528	33,107	9,961
1964	...	54,264	13,205	30,828	10,231
1965	...	53,684	13,516	30,545	9,623

SPECIES PLANTED IN THE FOREST YEAR 1965

Table 15 Thousand plants

	Total	Scots Pine	Corsican Pine	Lodgepole Pine	European Larch	Japanese Larch	Douglas Fir	Norway Spruce	Sitka Spruce	Oak	Beech	Other species	
												Conifer	Broad-leaved
Great Britain ...	99,373	9,302	6,106	20,886	927	4,224	3,914	8,038	38,560	287	1,273	5,233	623
England, Total...	26,088	3,913	5,492	3,667	598	606	1,997	3,448	2,993	252	995	2,560	567
<i>Conservancy:</i>													
North-West ...	5,071	406	1,129	968	135	127	360	395	986	15	92	352	106
North-East ...	7,876	1,139	417	2,448	218	243	137	1,071	1,592	6	95	248	262
East ...	5,592	1,694	2,449	33	90	—	44	457	—	76	305	422	22
South-East ...	2,951	423	897	7	12	57	175	284	—	39	182	826	49
South-West ...	3,168	184	148	97	75	105	899	715	395	58	198	250	44
New Forest ...	1,434	17	312	16	23	22	115	475	—	38	37	316	63
Dean Forest ...	669	37	75	—	40	47	250	17	—	19	82	93	9
Research ...	327	13	65	98	5	5	17	34	20	1	4	53	12
Scotland, Total...	54,490	5,009	227	14,716	328	2,541	1,345	2,283	26,475	18	65	1,443	40
<i>Conservancy:</i>													
North ...	15,076	2,789	47	5,677	97	551	502	346	4,929	1	2	127	8
East ...	12,249	1,724	77	4,459	91	556	544	679	3,838	9	55	212	5
South ...	13,173	364	88	1,938	58	761	196	509	8,728	5	3	516	7
West ...	13,798	129	14	2,554	82	662	96	747	8,927	3	5	571	8
Research ...	194	3	1	88	—	11	7	2	53	—	—	17	12
Wales, Total ...	17,995	380	387	2,503	1	1,077	572	2,307	9,092	17	213	1,430	16
<i>Conservancy:</i>													
North ...	6,124	—	61	168	1	73	57	882	3,928	9	52	881	12
South ...	11,371	380	326	2,335	—	1,004	515	1,425	5,164	8	161	549	4

FIRES IN FORESTS IN THE FOREST YEAR 1965

Table 16

	Great Britain	England	Scotland	Wales
Number of fires	863	426	101	336
Area burned (acres)	784	310	117	357
Value of damage (£)	77,435	31,650	13,417	32,368

CAUSES OF FIRES IN THE FOREST YEAR 1965

Table 17

Number

	Great Britain	England	Scotland	Wales
Total	863	426	101	336
Railways	259	157	32	70
Adjoining land	222	61	34	127
Public	196	112	15	69
Commission employees	11	9	2	—
Incendiarism	45	28	4	13
Miscellaneous	19	12	1	6
Unknown	111	47	13	51

AREAS OF PLANTATIONS AND VOLUMES OF TIMBER THINNED
AND FELLED IN THE FOREST YEAR 1965

Table 18

	Felled		Thinned		Total Volume Felled and Thinned (Million hoppus feet)
	Area (acres)	Volume (Million hoppus feet)	Area (acres)	Volume (Million hoppus feet)	
Great Britain ...	4,904	7·929	47,143	20·444	28·373
England, Total ...	3,572	5·288	18,212	7·921	13·209
<i>Conservancy:</i>					
North-West ...	648	0·773	3,888	1·498	2·271
North-East ...	222	0·369	2,876	1·364	1·733
East ...	638	0·926	4,630	2·373	3·299
South-East ...	373	0·502	1,211	0·385	0·887
South-West ...	628	0·869	2,249	1·072	1·941
New Forest ...	357	0·822	1,688	0·469	1·291
Dean Forest ...	706	1·027	1,670	0·760	1·787
Scotland, Total ...	656	1·434	19,604	8·456	9·890
<i>Conservancy:</i>					
North ...	336	0·565	2,141	1·316	1·881
East ...	112	0·451	9,345	3·080	3·531
South ...	114	0·224	4,243	2·049	2·273
West ...	94	0·194	3,875	2·011	2·205
Wales, Total ...	676	1·207	9,332	4·067	5·274
<i>Conservancy:</i>					
North ...	311	0·530	5,587	2·431	2·961
South ...	365	0·667	3,745	1·636	2·313

SALES OF TIMBER IN THE FOREST YEAR 1965

Table 19

Million hoppus feet

Description	Great Britain	England	Scotland	Wales
Trees sold standing ...	15·138	5·130	6·879	3·129
Converted* ...	10·661	7·011	2·064	1·586
Round timber and saw logs ...	2·473	1·706	0·526	0·241
Telegraph and other selected poles ...	0·063	0·052	0·004	0·007
Mining timber ...	2·267	1·484	0·170	0·613
Posts and stakes ...	0·726	0·373	0·283	0·070
Pulpwood and boardmill material ...	4·157	2·538	1·030	0·589
Sawn timber (roundwood equivalent) ...	0·076	0·062	0·014	—
Firewood ...	0·455	0·357	0·037	0·061
Miscellaneous ...	0·444	0·439	—	0·005
Poles sold in length (other than selected) ...	1·407	0·446	0·592	0·369

* *Note.*—In addition 0·4 million hoppus feet were converted and used internally for forest and estate purposes. (England 0·2, Scotland 0·1, Wales 0·1.)

CONSTRUCTION OF FOREST ROADS IN THE FOREST YEAR 1965
AND TOTAL MILEAGE

Table 20

Miles

	Great Britain	England	Scotland	Wales
Completed to final standard	514	166	220	128
Completed to initial standard	136	92	17	27
Total mileage in use	8,634	3,943	2,928	1,763

PROPERTIES MANAGED BY THE COMMISSION

Table 21

At 30th September, 1965

Number

	Great Britain	England	Scotland	Wales
Forest Properties	5,402	1,945	2,481	976
Foresters Houses	1,076	462	409	205
Forest Workers Houses	2,445	826	1,327	292
Forest Workers Holdings	854	336	343	175
Miscellaneous	1,027	321	402	304
Other properties	5,839	2,216	2,432	1,191
Farms and other agricultural subjects	2,166	749	830	587
Residential and miscellaneous	1,455	596	585	274
Sporting lettings	2,218	871	1,017	330
Easements, permissions, etc.	6,680	3,206	1,990	1,484

NEW HOUSES COMPLETED IN THE FOREST YEAR AND UNDER CONSTRUCTION

Table 22

At 30th September, 1965

Number

	Great Britain	England	Scotland	Wales
Completed	44	20	17	7
Under construction	49	9	34	6

PROGRESS OF THE DEDICATION SCHEME FOR PRIVATE ESTATES
IN THE FOREST YEAR 1965

Table 23

	Great Britain		England		Scotland		Wales	
	Number	Area (acres)	Number	Area (acres)	Number	Area (acres)	Number	Area (acres)
<i>Schemes completed:</i>								
Total	2,719	826,811	1,818	440,477	603	335,836	298	50,498
At end of previous year	2,591	791,384	1,734	425,997	571	317,384	286	48,003
During year (net)...	128	35,427	84	14,480	32	18,452	12	2,495
<i>Approved or in preparation at end of year</i>								
	157	38,201	77	14,090	48	20,159	32	3,952

PROGRESS OF THE APPROVED WOODLANDS SCHEME FOR PRIVATE ESTATES
IN THE FOREST YEAR 1965

Table 24

	Great Britain		England		Scotland		Wales	
	Number	Area (acres)	Number	Area (acres)	Number	Area (acres)	Number	Area (acres)
<i>Schemes completed:</i>								
Total	692	163,508	571	121,151	95	37,098	26	5,259
At end of previous year	665	161,417	550	120,099	89	35,991	26	5,327
During year (net)...	27	2,091	21	1,052	6	1,107	—	(—) 68
<i>Approved or in preparation at end of year</i>								
	7	680	6	592	1	88	—	—

ESTIMATED AREA PLANTED BY PRIVATE OWNERS
IN THE FOREST YEAR 1965

Table 25

Acres

	Great Britain	England	Scotland	Wales
Total	32,944	15,115	15,172	2,657
In Dedicated Woodlands	23,440	9,503	11,941	1,996
In Approved Woodlands	3,166	2,112	910	144
With Small Woods Planting Grants ...	4,595	2,526	1,666	403
Without Grants (estimated)	1,743	974	655	114

VOLUME OF TIMBER LICENSED FOR FELLING AND THINNING
ON PRIVATE ESTATES IN THE FOREST YEAR 1965

Table 26

	Great Britain	England	Scotland	Wales
Total volume (million hoppus feet)	16·790	10·634	5·233	0·923
Conifer	7·537	2·940	4·137	0·460
Broadleaved	9·253	7·694	1·096	0·463
Number of licences issued	2,623	2,046	394	183

AREA LICENSED FOR CLEAR FELLING ON PRIVATE ESTATES
IN THE FOREST YEAR 1965

Table 27

Acres

	Great Britain	England	Scotland	Wales
Total	9,198	6,931	1,728	539
Conditional licences	4,987	3,286	1,355	346
Unconditional licences	4,211	3,645	373	193

LAND USE AND PLANTING BY FORESTS—ENGLAND, 1965

Note:

In Tables 28–30, former Crown Woods are indicated by asterisks*.

Table 28

Acres

	Land use at 30th September, 1965				Planted in forest year 1965		
	Total	Under plantations	To be planted	Agricultural and other land	Total	New planting	Re-stocking
NORTH-WEST ENGLAND CONSERVANCY:							
TOTAL	132,745	93,665	17,276	21,804	2,413	1,849	564
Arden, Warwick and Worcs...	1,303	899	404	—	47	47	—
Bagot, Staffs	1,395	1,257	138	—	73	73	—
Bawtry, Notts	586	505	16	65	7	—	7
Blengdale, Cumberland ...	1,289	1,209	11	69	5	—	5
Bowland, Lancs and Yorks ...	942	886	12	44	11	7	4
Cannock, Staffs	6,673	6,419	124	130	64	26	38
Charnwood, Leicester	258	258	—	—	2	—	2
Cotgrave, Notts and Leicester	529	482	40	7	5	5	—
Dalton, Westmorland and Lancs	1,873	1,155	559	159	48	48	—
Delamere, Cheshire*	2,383	2,323	—	60	20	15	5
Dunnerdale, Cumberland and Lancashire	2,355	1,987	80	288	—	—	—
Dunsmore, Warwick	678	282	396	—	45	45	—
Ennerdale, Cumberland	8,782	3,302	438	5,042	101	101	—
Foremark Woods, Derby	571	407	161	3	28	28	—
Gisburn, Yorks	3,477	3,203	144	130	34	28	6
Goyt, Derbyshire and Cheshire	2,341	438	1,153	750	82	82	—
Greystoke, Cumberland	2,919	2,545	351	23	131	125	6
Grizedale, Lancs	7,589	6,469	314	806	4	4	—
Haberley, Salop	1,007	970	17	23	—	—	—
Haslingden, Lancs	935	126	622	187	8	7	1
Haughmond, Salop	1,547	821	696	30	66	66	—
Hope, Derby	2,988	746	60	2,182	6	—	6
Inglewood, Cumberland	1,778	1,543	170	65	31	29	2
Kershope, Cumberland	11,449	10,424	38	987	50	—	50
Kinver, Staffs	740	714	—	26	8	2	6
Launde, Leicester and Rutland	894	442	452	—	51	51	—
Lindale, Lancs and Westmorland	3,285	1,599	1,475	211	126	126	—
Long, Salop	1,712	1,418	231	63	44	44	—
Longtown, Cumberland	667	463	204	—	12	12	—
Matlock, Derby	2,439	1,488	920	31	113	105	8
Miterdale, Cumberland	1,799	1,187	316	296	71	71	—
Mortimer, Hereford and Salop	8,645	8,340	44	261	211	—	211
Oakamoor, Staffs	1,232	949	283	—	52	50	2
Packington, Warwick and Leicester	687	548	139	—	16	16	—
Sherwood, Derby, Yorks and Notts	15,953	13,168	2,213	572	289	237	52
Spadeadam, Cumberland and Northumberland	18,402	5,594	4,651	8,157	332	332	—
Swynnerton, Staffs	2,533	2,415	105	13	48	21	27
Thornthwaite, Cumberland ...	6,526	5,123	284	1,119	131	46	85
Walcot, Salop	1,584	1,561	15	8	41	—	41

Table 28—continued

Acres

	Land use at 30th September, 1965				Planted in forest year 1965		
	Total	Under plantations	To be planted	Agricultural and other land	Total	New planting	Re-stocking
NORTH-EAST ENGLAND CONSERVANCY:							
TOTAL	240,349	167,139	24,078	49,132	4,232	3,984	248
Allendale, Northumberland ...	674	494	176	4	68	68	—
Allerston, Yorks	36,724	26,775	4,177	5,772	771	727	44
Chillingham, Northumberland	2,438	1,299	1,088	51	194	194	—
Chopwell, Durham and Northumberland*	2,254	1,761	381	112	58	53	5
Fountains, Yorks	1,530	1,211	311	8	70	70	—
Hambleton, Yorks	19,221	13,154	5,198	869	562	562	—
Hamsterley, Durham	6,515	5,972	215	328	249	171	78
Harwood, Northumberland ...	8,968	7,733	599	636	10	2	8
Jervaulx, Yorks	2,065	1,570	491	4	80	80	—
Kidland, Northumberland ...	6,405	3,727	1,965	713	259	259	—
Kielder, Northumberland ...	72,458	47,553	1,724	23,181	514	511	3
Knaresborough, Yorks	2,057	1,467	552	38	53	44	9
Redesdale, Northumberland ...	14,328	12,318	2	2,008	4	4	—
Rothbury, Northumberland ...	4,611	3,947	306	358	196	167	29
Selby, Yorks	1,940	1,381	523	36	46	32	14
Slaley, Northumberland and Durham	2,330	1,998	260	72	87	87	—
South Yorkshire, Yorks ⁽¹⁾ ...	6,745	2,596	3,613	536	128	101	27
The Stang, Yorks	1,599	1,106	357	136	18	—	18
Wark, Northumberland	36,351	24,928	733	10,690	604	604	—
Weardale, Durham	4,393	832	131	3,430	—	—	—
Widehaugh, Northumberland	70	—	—	70	—	—	—
Wolds, Yorks	2,269	2,001	246	22	60	54	6
Wynyard, Durham	1,696	1,016	673	7	116	116	—
York East, Yorks	1,838	1,567	222	49	39	32	7
York West, Yorks	870	733	135	2	46	46	—
EAST ENGLAND CONSERVANCY:							
TOTAL	117,217	101,308	9,335	6,574	2,006	1,364	642
Aldewood, Suffolk	9,378	8,468	97	813	33	1	32
Amphill, Beds	1,673	1,056	536	81	42	42	—
Bardney, Lincs	4,991	4,245	617	129	143	143	—
Beechwood, Beds and Herts ...	876	660	216	—	40	28	12
Bernwood, Oxon and Bucks ...	2,218	1,533	677	8	87	87	—
Bramfield, Herts	1,599	1,068	509	22	45	45	—
Burwell, Lincs	761	708	52	1	—	—	—
Chilterns, Bucks, Oxon and Herts	5,418	4,211	1,154	53	244	217	27
Ditton, Cambs and Suffolk ...	580	440	140	—	16	16	—
Hazelborough, Bucks and Northants*	2,046	1,966	61	19	16	16	—
Honeywood, Essex	1,136	707	414	15	39	—	39
Huntingdon, Hunts.	906	325	580	1	27	27	—
Kesteven, Lincs and Rutland...	5,270	4,435	607	228	120	93	27
Laughton, Lincs	2,237	2,180	6	51	22	—	22
Lavenham, Suffolk	906	716	188	2	37	37	—
Lynn, Norfolk	2,698	2,258	173	267	44	5	39
Rockingham, Northants	6,400	5,532	586	282	57	36	21

Note: (1) South Yorkshire includes South Pennines.

Table 28—continued

Acres

	Land use at 30th September, 1965				Planted in forest year 1965		
	Total	Under plantations	To be planted	Agricultural and other land	Total	New planting	Re-stocking
Salcey, Bucks and Northants*	1,466	1,373	84	9	61	61	—
Thetford Chase, Norfolk and Suffolk ⁽¹⁾	51,622	47,014	664	3,944	652	281	371
Walden, Essex and Herts	1,303	896	386	21	21	20	1
Wensum, Norfolk	5,518	4,597	611	310	113	106	7
Whaddon Chase, Bucks, Beds and Northants	1,154	769	377	8	38	30	8
Wigsley, Lincs and Notts	1,801	1,377	347	77	64	64	—
Willingham, Lincs	2,932	2,738	69	125	36	—	36
Yardley Chase, Beds, Northants and Bucks	2,328	2,036	184	108	9	9	—
SOUTH-EAST ENGLAND CONSERVANCY:							
TOTAL	64,921	53,274	8,955	2,692	1,549	1,061	488
Abinger, Surrey	2,575	1,863	527	185	70	70	—
Alice Holt, Hants and Surrey*	2,544	2,262	44	238	32	—	32
Alton, Hants	1,352	1,307	24	21	—	—	—
Andover, Hants	1,776	1,481	146	149	40	40	—
Arundel, Sussex	2,633	2,409	134	90	38	—	38
Badbury, Berks	569	448	121	—	28	28	—
Bedgebury, Kent and Sussex*	3,400	3,048	38	314	69	33	36
Bere, Hants*	2,233	1,775	421	37	52	16	36
Bramshill, Berks and Hants ...	4,718	4,427	99	192	9	5	4
Brightling, Sussex	2,110	1,583	491	36	97	83	14
Bucklebury, Berks and Hants	1,733	1,095	633	5	103	102	1
Challock, Kent	4,981	4,614	330	37	200	6	194
Chiddingfold, Surrey and Sussex	2,867	2,573	275	19	71	26	45
Friston, Sussex	2,867	2,501	—	366	18	—	18
Gravetye, Sussex, Kent and Surrey	1,031	469	160	402	—	—	—
Havant, Hants and Sussex	1,341	709	622	10	15	10	5
Hursley, Hants	4,426	3,201	1,208	17	173	173	—
Maresfield, Kent and Sussex...	1,788	991	792	5	45	45	—
Micheldever, Hants	3,378	3,113	195	70	54	51	3
Mildmay, Kent and Surrey ...	1,559	963	588	8	80	80	—
Orlestone, Kent	1,405	1,389	—	16	51	—	51
Queen Elizabeth Forest, Hants and Sussex	3,065	2,418	497	150	81	81	—
Rogate, Sussex	891	710	105	76	45	40	5
St. Leonards, Sussex	1,997	1,443	496	58	63	57	6
Shipbourne, Kent	1,267	708	534	25	27	27	—
Slindon, Sussex	4,991	4,471	391	129	52	52	—
Vinehall, Sussex	1,422	1,303	84	35	36	36	—
Woking Office Grounds	2	—	—	2	—	—	—
SOUTH-WEST ENGLAND CONSERVANCY:							
TOTAL	87,221	71,072	11,971	4,178	2,065	1,733	332
Blandford, Dorset	2,813	2,320	280	213	36	34	2
Bodmin, Cornwall	6,228	5,124	773	331	108	103	5

Note: (1) Thetford Chase includes The King's Forest and also Swaffham Forest.

Table 28—continued

Acres

	Land use at 30th September, 1965				Planted in forest year 1965		
	Total	Under plantations	To be planted	Agricultural and other land	Total	New planting	Re-stocking
Bovey, Devon	1,275	630	616	29	82	82	—
Bradon, Wilts	1,723	1,468	253	2	—	—	—
Brendon, Somerset	3,033	2,671	272	90	92	89	3
Bristol, Somerset	708	608	81	19	21	20	1
Charmouth, Dorset and Devon	1,206	1,014	149	43	41	36	5
Cotswold, Gloucester	1,035	920	98	17	8	—	8
Cranborne Chase, Dorset and Wilts	1,751	1,592	142	17	36	36	—
Dartmoor, Devon	3,794	3,159	23	612	—	—	—
Dymock, Gloucester and Hereford	1,281	1,256	21	4	59	—	59
Eggesford, Devon	1,207	1,152	37	18	46	5	41
Exeter, Devon	4,737	4,336	362	39	60	41	19
Halwill, Devon and Cornwall ⁽¹⁾	6,589	5,493	470	626	137	89	48
Hartland, Devon and Cornwall	2,628	2,285	305	38	34	29	5
Hereford, Hereford and Gloucester	3,312	2,161	1,146	5	119	110	9
Honiton, Devon and Somerset	2,462	1,699	742	21	74	74	—
Land's End, Cornwall	994	630	357	7	62	38	24
Mendip, Somerset	2,809	2,513	221	75	83	38	45
Molton Woods, Devon and Somerset	2,298	1,501	781	16	71	71	—
Neroche, Somerset	3,051	1,736	676	639	74	74	—
Pershore, Worcs	463	288	174	1	30	30	—
Plym, Devon	2,218	1,987	228	3	32	32	—
Poorstock, Dorset and Somerset	2,513	1,709	803	1	233	233	—
Quantock, Somerset	2,766	2,299	114	353	19	14	5
Salisbury, Hants and Wilts ...	2,947	2,254	692	1	100	100	—
Savernake, Wilts and Berks ...	6,876	6,184	263	429	112	105	7
Wareham, Dorset	8,714	7,271	1,174	269	186	171	15
Westonbirt, Gloucester and Glos	423	318	—	105	—	—	—
Wilsey Down, Cornwall	1,548	1,352	137	59	33	33	—
Wyre, Worcs and Salop	3,819	3,142	581	96	77	46	31
NEW FOREST:							
TOTAL	79,620	38,955	2,488	38,177	570	281	289
Brighstone, Isle of Wight	1,717	1,476	129	112	—	—	—
Combley, Isle of Wight	1,045	761	270	14	57	57	—
New Forest, Hants*	67,020	28,509	1,704	36,807	439	162	277
Osborne, Isle of Wight	238	234	3	1	—	—	—
Parkhurst, Isle of Wight*	1,487	1,083	82	322	2	2	—
Ringwood, Dorset and Hants	7,467	6,363	298	806	66	54	12
Shalfleet, Isle of Wight	646	529	2	115	6	6	—
DEAN FOREST:							
TOTAL	27,234	22,115	1,468	3,651	681	47	634
Dean Forest, Gloucester, Hereford and Monmouth*	25,326	20,583	1,143	3,600	597	41	556
Tidenham Chase, Gloucester...	1,908	1,532	325	51	84	6	78

Note: (1) Halwill Forest includes Stratton Forest.

LAND USE AND PLANTING BY FORESTS—SCOTLAND, 1965

Table 29

Acres

	Land use at 30th September, 1965				Planted in forest year 1965		
	Total	Under plantations	To be planted	Agricultural and other land	Total	New planting	Re-stocking
NORTH SCOTLAND CONSERVANCY:							
TOTAL	537,515	193,143	72,438	271,934	8,295	7,978	317
Achnashellach, Ross	4,780	2,284	311	2,185	176	174	2
Affric, Inverness and Ross	67,603	11,012	8,368	48,223	375	365	10
Aigas, Inverness	1,715	1,331	281	103	75	75	—
Ardross, Ross ⁽¹⁾	8,518	7,521	106	891	65	45	20
Balblair, Sutherland and Ross	15,771	5,674	2,562	7,535	370	368	2
Black Isle	15,039	13,704	53	1,282	69	49	20
Boblainy, Inverness	5,041	4,292	19	730	80	80	—
Borgie, Sutherland	7,870	1,601	1,918	4,351	58	58	—
Ceannacroc, Inverness	11,436	3,102	2,184	6,150	185	185	—
Clunes, Inverness	7,261	2,818	130	4,313	3	—	3
Crag nan Eun, Inverness	2,139	1,554	60	525	—	—	—
Culloden, Inverness and Nairn	3,884	3,710	45	129	49	20	29
Dornoch, Sutherland	3,361	2,627	113	621	54	50	4
Dunnet, Caithness	862	315	—	547	—	—	—
Eilanreach, Inverness	922	805	32	85	—	—	—
Farigaig, Inverness	7,937	3,874	1,547	2,516	375	354	21
Ferness, Nairn	1,952	1,874	—	78	18	—	18
Fiunary, Argyll	17,503	6,267	5,040	6,196	214	214	—
Glen Garry, Inverness	25,038	6,406	4,162	14,470	415	402	13
Glen Hurich, Argyll	15,180	3,826	1,275	10,079	150	150	—
Glen Loy, Inverness	2,608	1,901	120	587	8	8	—
Glen Righ, Inverness	5,843	2,792	200	2,851	6	—	6
Glen Shiel, Ross	3,651	714	371	2,566	129	7	122
Glen Urquhart, Inverness	19,412	6,318	2,138	10,956	300	300	—
Helmsdale, Sutherland	674	347	311	16	96	96	—
Inchnacardoch, Inverness	9,545	4,034	1,770	3,741	385	385	—
Inshriach, Inverness	11,500	6,615	903	3,982	285	285	—
Inverinate, Ross	1,234	992	—	242	—	—	—
Lael, Ross	3,581	2,595	—	986	—	—	—
Leanachan, Inverness and Argyll	27,053	6,717	3,911	16,425	416	399	17
Morangie, Ross	8,310	6,741	120	1,449	138	138	—
Mull, Argyll	31,401	8,443	10,321	12,637	440	440	—
Naver, Sutherland	17,164	2,677	3,070	11,417	315	315	—
Nevis, Inverness	1,864	1,424	130	310	140	117	23
North Strone, Ross	1,969	885	60	1,024	20	20	—
Oykell, Ross and Sutherland... ..	4,609	3,585	483	541	205	205	—
Portclair, Inverness	5,545	2,428	240	2,877	—	—	—
The Queen's Forest, Inverness	12,475	3,957	329	8,189	98	98	—
Raasay, Isle of Raasay, Inverness	749	589	—	160	—	—	—
Ratagan, Inverness and Ross... ..	5,831	2,383	1,410	2,038	—	—	—
Rumster, Caithness	3,529	1,557	1,319	653	134	134	—
Shin, Sutherland	41,733	7,494	2,796	31,443	505	498	7
Skye, Inverness	23,191	4,901	2,385	15,905	424	424	—
Slattadale, Ross	2,146	1,462	174	510	70	70	—

Note: (1) Ardross includes Clach Liath.

Table 29—continued

Acres

	Land use at 30th September, 1965				Planted in forest year 1965		
	Total	Under plantations	To be planted	Agricultural and other land	Total	New planting	Re-stocking
South Laggan, Inverness ...	4,189	1,370	770	2,049	—	—	—
South Strome, Ross ...	4,072	2,491	410	1,171	176	176	—
Strath Conon, Ross ...	3,150	2,436	—	714	—	—	—
Strath Dearn, Inverness ...	8,014	4,642	795	2,577	400	400	—
Strath Mashie, Inverness ...	4,814	3,518	713	583	156	156	—
Strath Nairn, Inverness ...	2,598	1,622	30	946	60	60	—
Strathy, Sutherland ...	937	434	262	241	59	59	—
Sunart, Argyll and Inverness...	10,464	3,151	1,822	5,491	162	162	—
Torrachilty, Ross ...	29,800	7,285	6,869	15,646	437	437	—
Hoy Experiments, Orkney ...	32	32	—	—	—	—	—
Lewis Experiments, Isle of Lewis, Ross ...	16	14	—	2	—	—	—
EAST SCOTLAND CONSERVANCY:							
TOTAL ...	291,756	186,895	24,395	80,466	6,557	6,350	207
Allean, Perth ...	5,113	3,421	723	969	425	425	—
Altcaillach, Aberdeen ...	3,804	3,640	—	164	—	—	—
Aultmore, Banff ...	6,787	3,180	3,039	568	520	445	75
Bennachie, Aberdeen ...	6,093	3,864	9	2,220	—	—	—
The Bin, Aberdeen and Banff	8,679	7,440	525	714	209	202	7
Blackcraig, Perth ...	3,345	2,962	107	276	118	118	—
Blackhall, Kincardine and Aberdeen ...	4,864	4,730	14	120	153	153	—
Blairadam, Fife and Kinross ⁽¹⁾	3,375	3,092	158	125	118	115	3
Clashindarroch, Aberdeen ...	16,897	12,838	192	3,867	189	189	—
Craigvinean, Perth ...	4,088	3,767	12	309	—	—	—
Culbin, Moray and Nairn ...	7,738	7,379	21	338	3	3	—
Cushnie, Aberdeen ...	3,174	1,288	730	1,156	252	252	—
Delgaty, Aberdeen and Banff	2,636	2,388	213	35	77	77	—
Drummond Hill, Perth ...	6,897	5,443	42	1,412	30	30	—
Drumtochty, Kincardine ...	9,190	6,576	180	2,434	234	234	—
Durris, Aberdeen and Kincardine ...	6,731	6,010	137	584	389	359	30
Edensmuir, Fife ...	1,952	1,799	—	153	17	14	3
Elchies, Moray ...	4,161	3,485	360	316	321	321	—
Faskally, Perth ...	1,061	652	284	125	60	60	—
Fetteresso, Kincardine ...	8,115	6,604	23	1,488	—	—	—
Fonab, Perth ...	2,248	1,739	—	509	64	64	—
Forest of Deer, Aberdeen ...	4,026	3,639	101	286	246	210	36
Glendevon, Perth and Kinross	2,244	1,013	828	403	31	31	—
Glendoll, Angus ...	3,713	1,287	—	2,426	—	—	—
Glenarrochy, Perth ...	11,979	3,157	2,827	5,995	280	280	—
Glenisla, Angus and Perth ...	11,322	5,021	416	5,885	211	211	—
Glenlivet, Banff ...	11,204	8,633	1,783	788	444	444	—
Glenprosen, Angus ...	8,326	1,352	1,310	5,664	195	195	—
Hallyburton, Angus and Perth	2,122	2,065	8	49	1	1	—
Inglismaldie, Angus and Kincardine ...	1,710	1,684	—	26	—	—	—
Keillour, Perth ...	2,021	1,935	35	51	5	5	—
Kemnay, Aberdeen ...	1,398	1,374	3	21	—	—	—
Kindrogan, Perth ...	2,814	1,074	1,477	263	413	413	—

Note: (1) Blairadam includes Carden.

Table 29—continued

Acres

	Land use at 30th September, 1965				Planted in forest year 1965		
	Total	Under plantations	To be planted	Agricultural and other land	Total	New planting	Re-stocking
Kinfauns, Perth	1,119	1,115	—	4	—	—	—
Kirkhill, Aberdeen	2,978	2,897	—	81	65	54	11
Ledmore, Perth	117	—	—	117	—	—	—
Lossie, Moray	1,904	1,672	1	231	—	—	—
Midmar, Aberdeen	1,442	1,368	1	73	51	51	—
Monaughty, Moray	4,362	4,034	210	118	24	—	24
Montreathmont, Angus	2,782	2,739	—	43	—	—	—
Newton Nursery, Moray	175	—	17	158	—	—	—
Newtyle, Moray	3,681	2,774	345	562	30	30	—
Pitfichie, Aberdeen	6,267	5,341	146	780	12	8	4
Pitmedden, Fife and Perth	2,006	1,881	59	66	35	35	—
Rannoch, Perth	47,452	7,470	6,138	33,844	814	814	—
Rosarie, Banff and Moray	6,236	5,581	123	532	—	—	—
Roseisle, Moray	2,083	2,024	—	59	5	—	5
Scotmore, Moray	821	820	—	1	—	—	—
Speymouth, Moray and Banff	11,374	10,447	501	426	160	160	—
Strathord, Perth	1,623	1,603	15	5	5	—	5
Teindland, Moray	3,177	2,760	297	120	80	79	1
Tentsmuir, Fife	3,936	3,564	3	369	11	8	3
Tornashean, Aberdeen	6,986	3,065	982	2,939	260	260	—
Whitehaugh, Aberdeen	1,408	1,209	—	199	—	—	—
SOUTH SCOTLAND CONSERVANCY:							
TOTAL	318,653	180,874	48,473	89,306	7,743	7,689	54
Forest of Ae, Dumfries	13,494	12,873	43	578	11	1	10
Arcleloch, Ayr	4,235	2,584	1,159	492	255	255	—
Auchenroddan, Dumfries	730	712	—	18	7	—	7
Bareagle, Wigton	4,826	2,368	2,122	336	306	306	—
Brownmoor, Dumfries	906	885	8	13	—	—	—
Cairn Edward, Kirkcudbright	28,604	19,528	1,832	7,244	568	568	—
Cardrona, Peebles	1,771	1,643	94	34	48	46	2
Carrick, Ayr	33,595	10,669	4,646	18,280	464	464	—
Castle O'er, Dumfries and Selkirk	9,395	8,403	138	854	176	176	—
Changeue, Ayr	3,045	2,134	172	739	206	206	—
Clydesdale, Lanark	1,985	1,085	762	138	100	100	—
Corriedoo, Kirkcudbright	1,045	995	—	50	—	—	—
Craik, Roxburgh, Selkirk and Dumfries	7,794	4,661	2,565	568	108	108	—
Dalbeattie, Kirkcudbright	6,278	5,874	35	369	21	21	—
Dalmacallan, Dumfries	3,486	3,194	152	140	71	71	—
Dreva, Peebles	1,354	1,257	70	27	13	13	—
Dundeugh, Kirkcudbright	5,966	5,049	—	917	55	55	—
Duns, Berwick	1,607	1,252	339	16	81	81	—
Eddleston Water, Peebles	1,380	1,137	149	94	75	75	—
Edgarhope, Berwick and Midlothian	2,018	1,493	17	508	60	60	—
Elibank and Traquair, Selkirk and Peebles	6,434	4,691	490	1,253	150	150	—
Fleet, Kirkcudbright	2,810	1,257	1,430	123	4	4	—
Garcrogo, Kirkcudbright	1,862	1,618	7	237	—	—	—
The Garraries, Kirkcudbright	10,321	3,560	1,828	4,933	351	351	—
Glenbreck, Peebles	12,685	692	3,006	8,987	202	202	—

Table 29—continued

Acres

	Land use at 30th September, 1965				Planted in forest year 1965		
	Total	Under plantations	To be planted	Agricultural and other land	Total	New planting	Re-stocking
Glengap, Kirkcudbright ...	2,223	2,190	4	29	2	2	—
Glentress, Peebles ...	2,358	2,070	39	249	35	30	5
Glen Trool, Kirkcudbright and Ayr ...	51,376	21,683	4,206	25,487	1,257	1,257	—
Greskine, Dumfries ...	13,902	3,329	7,625	2,948	184	174	10
Kilgrammie, Ayr ...	611	604	1	6	37	37	—
Kilsture, Wigtown ...	2,677	1,612	1,040	25	266	266	—
Kirroughtree, Kirkcudbright...	11,929	8,277	1,152	2,500	374	368	6
Kyle, Ayr ...	2,288	1,224	863	201	208	208	—
Laurieston, Kirkcudbright ...	5,533	4,568	813	152	141	141	—
Mabie, Kirkcudbright and Dumfries ...	6,252	4,048	1,720	484	265	264	1
Moffat Water, Dumfries ...	5,319	1,537	2,429	1,353	374	374	—
Newcastleton, Roxburgh and Dumfries ...	7,754	7,496	16	242	11	—	11
Penninghame, Wigtown ...	8,943	4,408	3,050	1,485	309	309	—
Saltoun, East Lothian and Midlothian ...	987	589	351	47	30	30	—
Selm Muir, Midlothian and West Lothian ...	1,696	1,306	315	75	121	121	—
Stenton, East Lothian and Berwick ...	1,318	1,023	230	65	50	50	—
Upper Nithsdale, Ayr and Dumfries ...	3,217	1,513	1,391	313	201	201	—
Watermeetings, Lanark ...	3,468	1,727	223	1,518	148	148	—
Wauchope, Roxburgh ...	13,494	9,519	207	3,768	125	123	2
Whitrope, Roxburgh ...	3,307	431	1,592	1,284	231	231	—
Yair Hill, Selkirk and Roxburgh ...	2,336	2,106	142	88	42	42	—
Bush Nursery, Midlothian ...	9	—	—	9	—	—	—
Whittingehame Seed Orchard, East Lothian ...	30	—	—	30	—	—	—
WEST SCOTLAND CONSERVANCY:							
TOTAL ...	382,332	160,433	45,623	176,276	7,949	7,852	97
Achaglachgach, Argyll ...	6,123	3,593	1,173	1,357	409	409	—
Ardfin, Jura, Argyll ...	2,052	855	807	390	115	115	—
Ardgartan, Argyll ...	20,929	7,143	35	13,751	—	—	—
Asknish, Argyll ...	5,899	4,069	846	984	308	308	—
Barcaldine, Argyll ...	9,648	5,465	820	3,363	280	280	—
Benmore, Argyll ...	9,300	3,387	160	5,753	61	59	2
Black Corries, Argyll and Perth ...	3,232	68	2,811	353	—	—	—
Carradale, Argyll ...	10,933	4,899	—	6,034	59	59	—
Carron Valley, Stirling ...	7,611	5,620	402	1,589	290	290	—
Corlarach, Argyll ...	3,424	2,721	47	656	51	51	—
Creran, Argyll ...	4,248	1,590	621	2,037	234	234	—
Cumbernauld, Dunbarton and West Lothian ...	1,628	1,133	325	170	207	207	—
Dalmally, Argyll ...	3,148	1,901	1,035	212	223	223	—
Devilla, Fife and Clackmannan ...	3,612	3,255	160	197	99	99	—
Fearnoch, Argyll ...	4,370	1,562	2,002	806	178	178	—
Garadhbhan, Stirling and Dunbarton ...	8,632	1,339	2,255	5,038	—	—	—

Table 29—continued

Acres

	Land use at 30th September, 1965				Planted in forest year 1965		
	Total	Under plantations	To be planted	Agricultural and other land	Total	New planting	Re-stocking
Garelochhead, Dunbarton ...	3,938	1,512	1,638	788	185	185	—
Garshelloch, Stirling ...	823	775	46	2	50	35	15
Glenbranter, Argyll ...	9,176	4,570	215	4,391	170	170	—
Glencoe, Argyll ...	3,083	954	444	1,685	258	258	—
Glendaruel, Argyll ...	7,972	3,255	235	4,482	200	200	—
Glendochart, Perth ...	14,182	1,259	1,698	11,225	294	294	—
Glenduror, Argyll ...	7,914	2,933	172	4,809	7	7	—
Glenfinart, Argyll ...	8,711	3,252	—	5,459	—	—	—
Glenorchy, Argyll ...	9,636	1,132	5,292	3,212	125	125	—
Glenrickard, Arran, Buteshire	13,984	4,250	4,299	5,435	673	673	—
Inverinan, Argyll ...	17,846	7,787	516	9,543	493	493	—
Inverliever, Argyll*	25,531	7,331	489	17,711	251	184	67
Kilennan, Islay, Argyll ...	1,415	474	686	255	100	100	—
Kilmartin, Argyll ...	2,190	2,048	70	72	49	49	—
Kilmichael, Argyll ...	10,077	5,390	3	4,684	—	—	—
Kilmory, Argyll ...	3,816	3,238	9	569	23	23	—
Knapdale, Argyll ...	18,521	7,931	—	10,590	40	40	—
Leapmoor, Renfrew ...	1,465	612	790	63	124	124	—
Lennox, Stirling and Dunbarton ...	829	782	—	47	—	—	—
Loch Ard, Perth and Stirling...	35,229	22,440	327	12,462	638	633	5
Loch Eck, Argyll ...	5,501	2,394	24	3,083	—	—	—
Loch Etive, Argyll ...	7,768	1,442	3,147	3,179	200	200	—
Minard, Argyll ...	5,326	3,806	23	1,497	26	26	—
Raera, Argyll ...	2,893	—	2,487	406	—	—	—
Rowardennan, Stirling ...	9,466	2,910	449	6,107	100	92	8
Saddell, Argyll...	4,355	1,528	10	2,817	—	—	—
St. Fillans, Perth ...	4,049	2,296	624	1,129	248	248	—
South Kintyre, Argyll ...	11,778	2,261	5,163	4,354	667	667	—
Strathlachlan, Argyll ...	7,615	2,743	—	4,872	—	—	—
Strathyre, Perth ...	11,110	6,446	302	4,362	—	—	—
Tighnabraich, Argyll ...	7,007	2,280	1,246	3,481	206	206	—
Torrie, Perth ...	2,112	1,269	304	539	138	138	—
Tulliallan Nursery, Fife ...	112	—	—	112	—	—	—
Whitelee, Ayr ...	2,113	533	1,416	164	170	170	—

LAND USE AND PLANTING BY FORESTS—WALES, 1965

Table 30

Acres

	Land use at 30th September, 1965				Planted in forest year 1965		
	Total	Under plantations	To be planted	Agricultural and other land	Total	New planting	Re-stocking
NORTH WALES CONSERVANCY:							
TOTAL	191,748	144,660	10,859	36,229	4,142	3,464	678
Aberhrrnant, Merioneth ...	6,885	3,579	8	3,298	38	34	4
Aeron, Cardigan	4,035	3,581	288	166	152	152	—
Arfon, Caernarvon	890	460	238	192	49	49	—
Bechan, Montgomery	755	745	—	10	4	—	4
Beddgelert, Caernarvon ...	3,775	2,474	233	1,068	127	127	—
Breidden, Montgomery and Salop	803	683	48	72	34	9	25
Carno, Montgomery	1,098	1,055	—	43	10	8	2
Ceiriog, Denbigh	1,686	1,518	126	42	55	55	—
Clocaenog, Denbigh and Merioneth	17,790	14,937	666	2,187	704	641	63
Clwyd, Denbigh and Flint ...	2,417	1,941	238	238	60	60	—
Coed Sarnau, Radnor	7,054	5,950	503	601	262	242	20
Coed y Brenin, Merioneth ...	21,683	13,579	1,622	6,482	339	255	84
Cynwyd, Merioneth	1,926	1,670	90	166	107	9	98
Deudraeth, Merioneth	3,452	2,068	269	1,115	185	185	—
Dovey, Merioneth and Montgomery	22,506	18,168	1,014	3,324	676	506	170
Dyfnant, Montgomery	7,156	4,965	23	2,168	97	95	2
Edw, Radnor	624	618	2	4	—	—	—
Elwy, Denbigh and Flint ...	2,682	2,465	108	109	40	40	—
Goror, Denbigh and Salop ...	1,056	963	52	41	25	9	16
Gwydyr, Caernarvon and Denbigh	19,712	13,238	1,494	4,980	251	214	37
Hafren, Montgomery	10,718	8,969	—	1,749	5	—	5
Kerry, Montgomery, Salop and Radnor	2,793	2,754	—	39	4	—	4
Llambod, Cardigan and Carmarthen	1,780	1,737	4	39	28	—	28
Llangollen, Denbigh	1,185	1,135	39	11	20	20	—
Lleyn, Caernarvon	2,754	1,757	676	321	104	86	18
Maelor, Denbigh, Flint and Salop	561	455	44	62	13	9	4
Mathrafal, Montgomery and Salop	2,952	2,595	281	76	112	109	3
Môn, Anglesey	3,915	3,074	95	746	27	27	—
Myherin, Cardigan	6,150	3,715	56	2,379	3	—	3
Penllyn, Merioneth	2,379	2,235	39	105	26	3	23
Radnor, Radnor and Hereford	5,890	5,490	44	356	12	8	4
Rheidol, Cardigan	4,962	3,129	1,307	526	14	14	—
Taliesin, Cardigan and Montgomery	6,682	3,408	1,072	2,202	409	406	3
Tanat, Montgomery and Denbigh	849	836	2	11	—	—	—
Tarenig, Cardigan and Montgomery	5,210	4,177	118	915	79	79	—
Ystwyth, Cardigan	4,979	4,537	60	382	71	13	58
Chirk Depot, Denbigh	4	—	—	4	—	—	—

Table 30—continued

Acres

	Land use at 30th September, 1965				Planted in forest year 1965		
	Total	Under plantations	To be planted	Agricultural and other land	Total	New planting	Re-stocking
SOUTH WALES CONSERVANCY:							
TOTAL	183,949	136,908	31,698	15,343	5,481	4,472	1,009
Bannau, Brecon	5,689	4,619	430	640	138	138	—
Brechfa, Carmarthen	16,577	13,854	1,204	1,519	276	261	15
Brecon, Brecon	2,115	1,903	102	110	10	—	10
Caeo, Carmarthen	5,066	4,295	388	383	142	142	—
Chepstow, Monmouth	2,622	2,271	347	4	71	—	71
Cilgwyn, Brecon and Carmarthen	1,344	1,315	24	5	8	3	5
Coed Caerdydd, Glamorgan	1,348	1,016	321	11	61	61	—
Coed Morgannwg, Glamorgan	42,228	33,287	5,742	3,199	938	782	156
Coed y Rhaiadr, Brecon	3,715	2,715	398	602	18	18	—
Conwil Elvet, Cardigan and Carmarthen	1,192	1,098	89	5	63	63	—
Crychan, Brecon and Carmarthen	9,430	8,665	321	444	16	—	16
Draethen, Glamorgan and Monmouth	1,570	863	654	53	72	—	72
Ebbw, Monmouth	9,326	6,982	1,544	800	370	175	195
Gamrhiw, Brecon	1,218	1,071	76	71	37	37	—
Giedd, Brecon	841	782	3	56	56	56	—
Glasfynydd, Brecon and Carmarthen	3,583	3,461	7	115	—	—	—
Gower, Glamorgan	1,121	624	427	70	56	56	—
Goytre, Monmouth	967	837	97	33	52	5	47
Gwendraeth, Carmarthen	712	594	68	50	25	—	25
Hay, Brecon, Hereford and Radnor	1,925	1,566	197	162	54	20	34
Irfon, Brecon	4,685	3,046	1,141	498	221	221	—
Llanddowror, Carmarthen and Pembroke	2,099	1,537	532	30	126	126	—
Llandeilo, Carmarthen	1,134	1,032	27	75	—	—	—
Llantrisant, Glamorgan	1,321	1,054	205	62	124	93	31
Monmouth, Monmouth	1,697	1,202	494	1	42	—	42
Mynydd Ddu, Brecon and Monmouth	3,650	2,968	260	422	45	29	16
Pembrey, Carmarthen	4,187	2,143	178	1,866	84	84	—
Penllergaer, Glamorgan	693	642	23	28	—	—	—
Preseli, Pembroke and Carmarthen(†)	2,809	2,006	420	383	179	162	17
Rhondda, Glamorgan	7,130	1,622	4,833	675	567	567	—
St. Gwynno, Glamorgan	8,140	5,983	1,370	787	520	384	136
Slebech, Pembroke	2,082	1,857	101	124	25	25	—
Tair Onen, Glamorgan	1,246	866	240	140	37	30	7
Talybont, Brecon	3,863	3,458	259	146	84	80	4
Teifi, Carmarthen, Cardigan and Pembroke	1,220	1,012	131	77	11	11	—
Tintern, Monmouth	5,220	4,889	115	216	60	—	60
Towy, Cardigan, Brecon and Carmarthen	17,529	7,442	8,631	1,456	854	841	13
Wentwood, Monmouth	2,655	2,331	299	25	39	2	37

Note: (†) Preseli includes Tŷ Ddewi.

Table 31
ENGLAND
Main statistics for the year ended 30th September, 1965

FORESTRY COMMISSION		
LAND USE AT THE END OF THE YEAR		
		<i>Acres</i>
Total area	...	749,307
Forest land: Total		623,099
Under plantations	...	547,528
To be planted		75,571
Other land: Total		126,208
Nurseries	689
Agricultural and grazing	...	49,626
Forest Workers' Holdings	...	4,840
Unplantable and miscellaneous	...	71,053
FOREST LAND ACQUIRED IN THE YEAR		
		<i>Acres</i>
Total area	...	(- 11)
Standing woods	(- 257)
Bare land for afforestation	...	246
Former woodland for replanting	...	—
PLANTING IN THE YEAR		
		<i>Acres</i>
Total area	...	13,516
New Planting		10,319
Restocking	...	3,197
AREAS OF PLANTATIONS AND VOLUMES OF TIMBER THINNED AND FELLED IN THE YEAR		
	<i>Area (acres)</i>	<i>Volume (million hoppus feet)</i>
Total	21,784	13·209
Felled	3,572	5·288
Thinned	18,212	7·921
CONSTRUCTION AND MAINTENANCE OF ROADS		
Completed to final standard	...	166
Completed to initial standard	...	92
Total mileage in use	3,943

EMPLOYMENT

Number of forest workers employed at end of year: 4,462 (including 157 part-time workers).

Table 31—*continued*

ENGLAND

Main statistics for the year ended 30th September, 1965

PRIVATE FORESTRY

PROGRESS OF THE DEDICATION SCHEME

	<i>Number</i>	<i>Area (acres)</i>
Total schemes completed to date ...	1,818	440,477
Schemes completed during year (net)	84	14,480
Schemes approved or in preparation at end of year	77	14,090

PROGRESS OF THE APPROVED WOODLANDS SCHEME

	<i>Number</i>	<i>Area (acres)</i>
Total schemes completed to date ...	571	121,151
Schemes completed during year (net)	21	1,052
Schemes approved or in preparation at end of year	6	592

ESTIMATED AREA PLANTED BY PRIVATE OWNERS IN THE YEAR

	<i>Acres</i>
Total area... ..	15,115
In Dedicated Woodlands ...	9,503
In Approved Woodlands	2,112
With Small Woods Planting Grants	2,526
Without Grants (estimated) ...	974

Table 32
SCOTLAND
Main statistics for the year ended 30th September, 1965

FORESTRY COMMISSION		
LAND USE AT THE END OF THE YEAR		
		<i>Acres</i>
Total area... ..		1,530,256
Forest land: Total ...		912,274
Under Plantations ...		721,345
To be planted		190,929
Other land: Total		617,982
Nurseries		726
Agricultural and grazing ...		394,309
Forest Workers' Holdings		8,261
Unplantable and miscellaneous ...		214,686
FOREST LAND ACQUIRED IN THE YEAR		
		<i>Acres</i>
Total area... ..		27,782
Standing woods		685
Bare land for afforestation ...		8,451
Former woodland for replanting ...		18,646
PLANTING IN THE YEAR		
		<i>Acres</i>
Total area ...		30,545
New Planting		29,869
Restocking ...		676
AREAS OF PLANTATIONS AND VOLUMES OF TIMBER THINNED AND FELLED IN THE YEAR		
	<i>Area (acres)</i>	<i>Volume (million hoppus feet)</i>
Total ...	20,260	9·890
Felled	656	1·434
Thinned	19,604	8·456
CONSTRUCTION AND MAINTENANCE OF ROADS		
		<i>Miles</i>
Completed to final standard ...		220
Completed to initial standard ...		17
Total mileage in use		2,928

EMPLOYMENT

Number of forest workers employed at end of year: 3,890 (including 35 part-time workers).

Table 32—continued

SCOTLAND

Main statistics for the year ended 30th September, 1965

PRIVATE FORESTRY

PROGRESS OF THE DEDICATION SCHEME

	<i>Number</i>	<i>Area (acres)</i>
Total schemes completed to date ...	603	335,836
Schemes completed during year (net)	32	18,452
Schemes approved or in preparation at end of year	48	20,159

PROGRESS OF THE APPROVED WOODLANDS SCHEME

	<i>Number</i>	<i>Area (acres)</i>
Total schemes completed to date ...	95	37,098
Schemes completed during year (net)	6	1,107
Schemes approved or in preparation at end of year	1	88

ESTIMATED AREA PLANTED BY PRIVATE OWNERS IN THE YEAR

	<i>Acres</i>
Total area	15,172
In Dedicated Woodlands ...	11,941
In Approved Woodlands	910
With Small Woods Planting Grants	1,666
Without Grants (estimated) ...	655

Table 33

WALES

Main statistics for the year ended 30th September, 1965

FORESTRY COMMISSION		
LAND USE AT THE END OF THE YEAR		
		<i>Acres</i>
Total area... ..		375,697
Forest land: Total		324,125
Under Plantations ...		281,568
To be planted		42,557
Other lands: Total		51,572
Nurseries		297
Agricultural and grazing ...		31,992
Forest Workers' Holdings ...		4,537
Unplantable and miscellaneous ...		14,746
FOREST LAND ACQUIRED IN THE YEAR		
		<i>Acres</i>
Total area... ..		3,561
Standing woods		77
Bare land for afforestation ...		3,218
Former woodland for replanting ...		266
PLANTING IN THE YEAR		
		<i>Acres</i>
Total area... ..		9,623
New Planting		7,936
Restocking ...		1,687
AREAS OF PLANTATIONS AND VOLUMES OF TIMBER THINNED AND FELLED IN THE YEAR		
	<i>Area (acres)</i>	<i>Volume (million hoppus feet)</i>
Total ...	10,008	5·274
Felled	676	1·207
Thinned	9,332	4·067
CONSTRUCTION AND MAINTENANCE OF ROADS		
		<i>Miles</i>
Completed to final standard ...		128
Completed to initial standard ...		27
Total mileage in use ...		1,763

EMPLOYMENT

Number of forest workers employed at end of year: 2,501 (including 59 part-time workers).

Table 33—continued

WALES

Main statistics for the year ended 30th September, 1965

PRIVATE FORESTRY

PROGRESS OF THE DEDICATION SCHEME

	<i>Number</i>	<i>Area (acres)</i>
Total schemes completed to date ...	298	50,498
Schemes completed during year (net)	12	2,495
Schemes approved or in preparation at end of year	32	3,952

PROGRESS OF THE APPROVED WOODLANDS SCHEME

	<i>Number</i>	<i>Area (acres)</i>
Total schemes completed to date ...	26	5,259
Schemes completed during year (net)	—	(—)68
Schemes approved or in preparation at end of year	—	—

ESTIMATED AREA PLANTED BY PRIVATE OWNERS IN THE YEAR

	<i>Acres</i>
Total Area	2,657
In Dedicated Woodlands ...	1,996
In Approved Woodlands	144
With Small Woods Planting Grants	403
Without Grants (estimated) ...	114

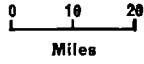
APPENDIX III

MAPS

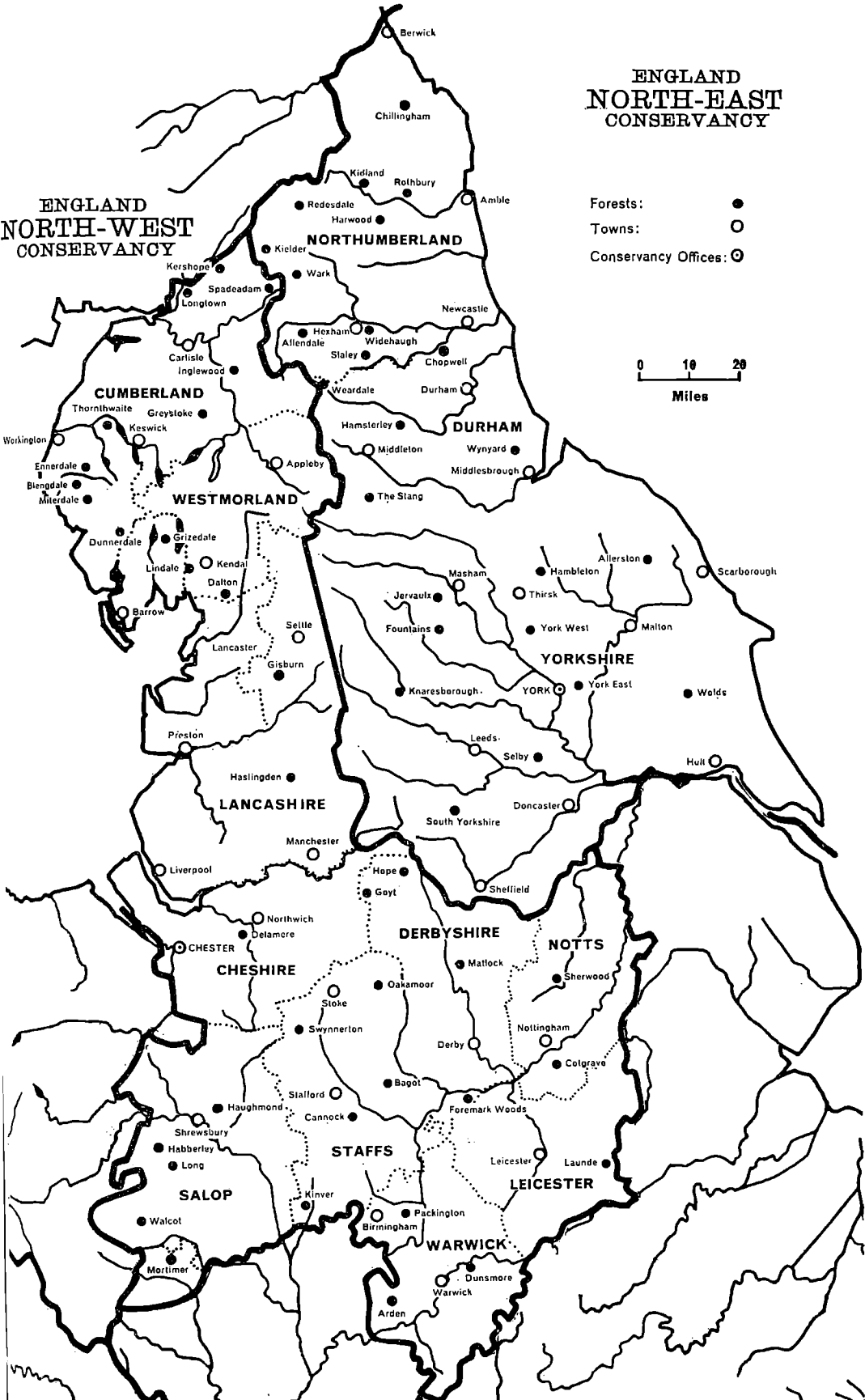
Maps showing the situation of the Commission Forests and the boundaries of the Conservancies, as at 30th September, 1965, follow overleaf.

**ENGLAND
NORTH-EAST
CONSERVANCY**

- Forests: ●
Towns: ○
Conservancy Offices: ⊙

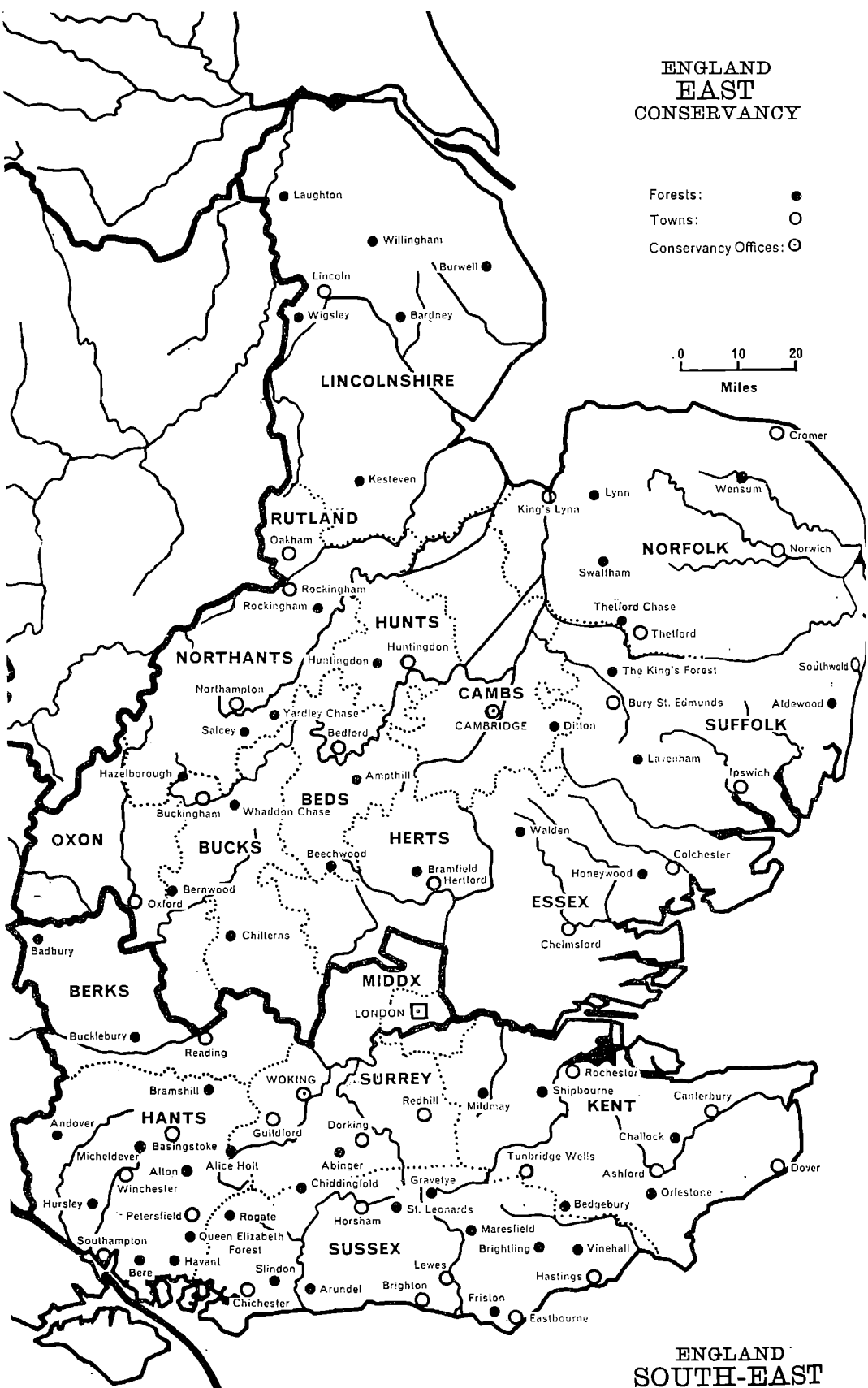
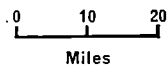


**ENGLAND
NORTH-WEST
CONSERVANCY**

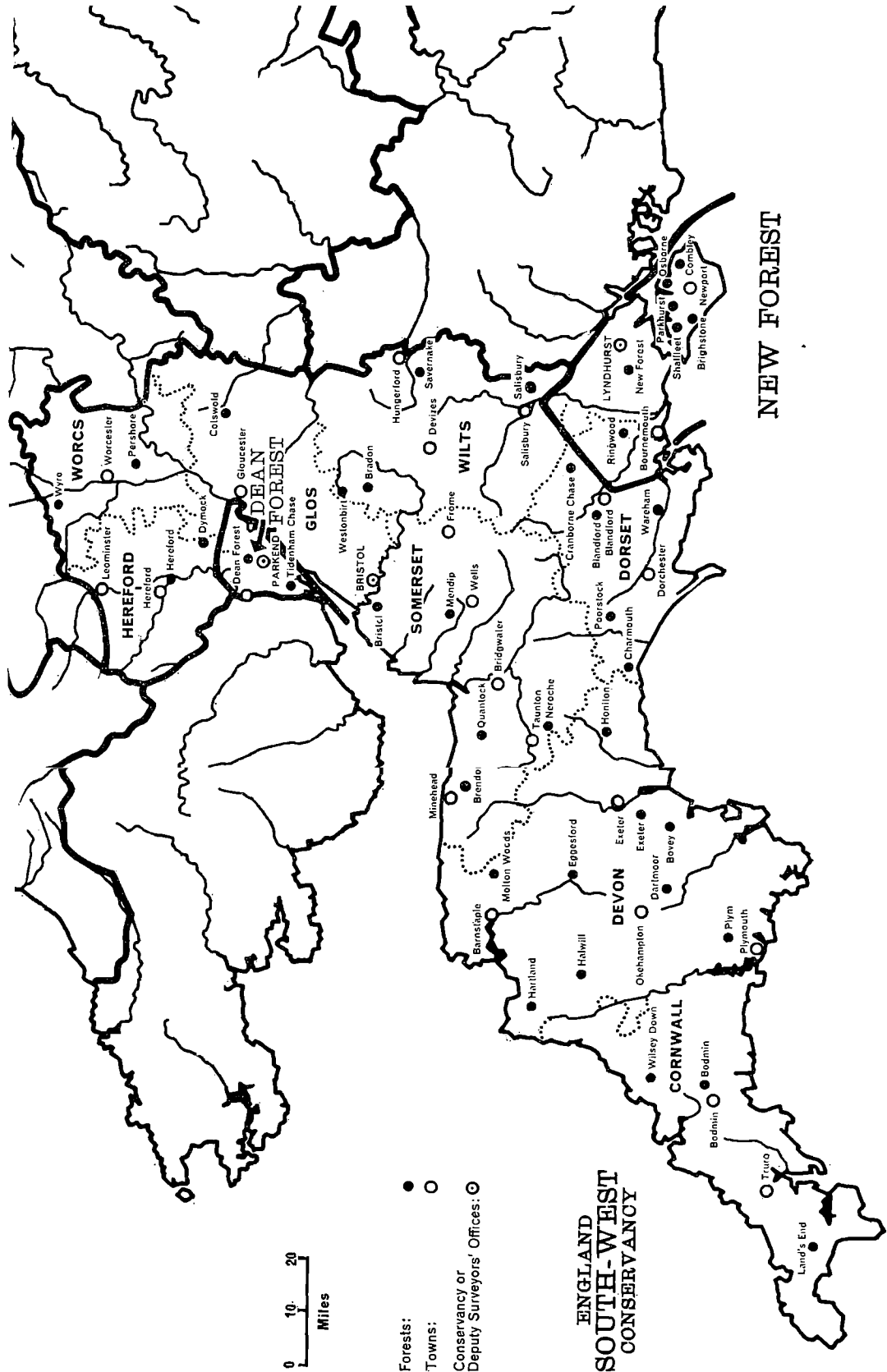


ENGLAND
EAST
CONSERVANCY

- Forests: ●
Towns: ○
Conservancy Offices: ⊙



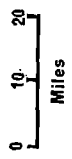
ENGLAND
SOUTH-EAST
CONSERVANCY



NEW FOREST

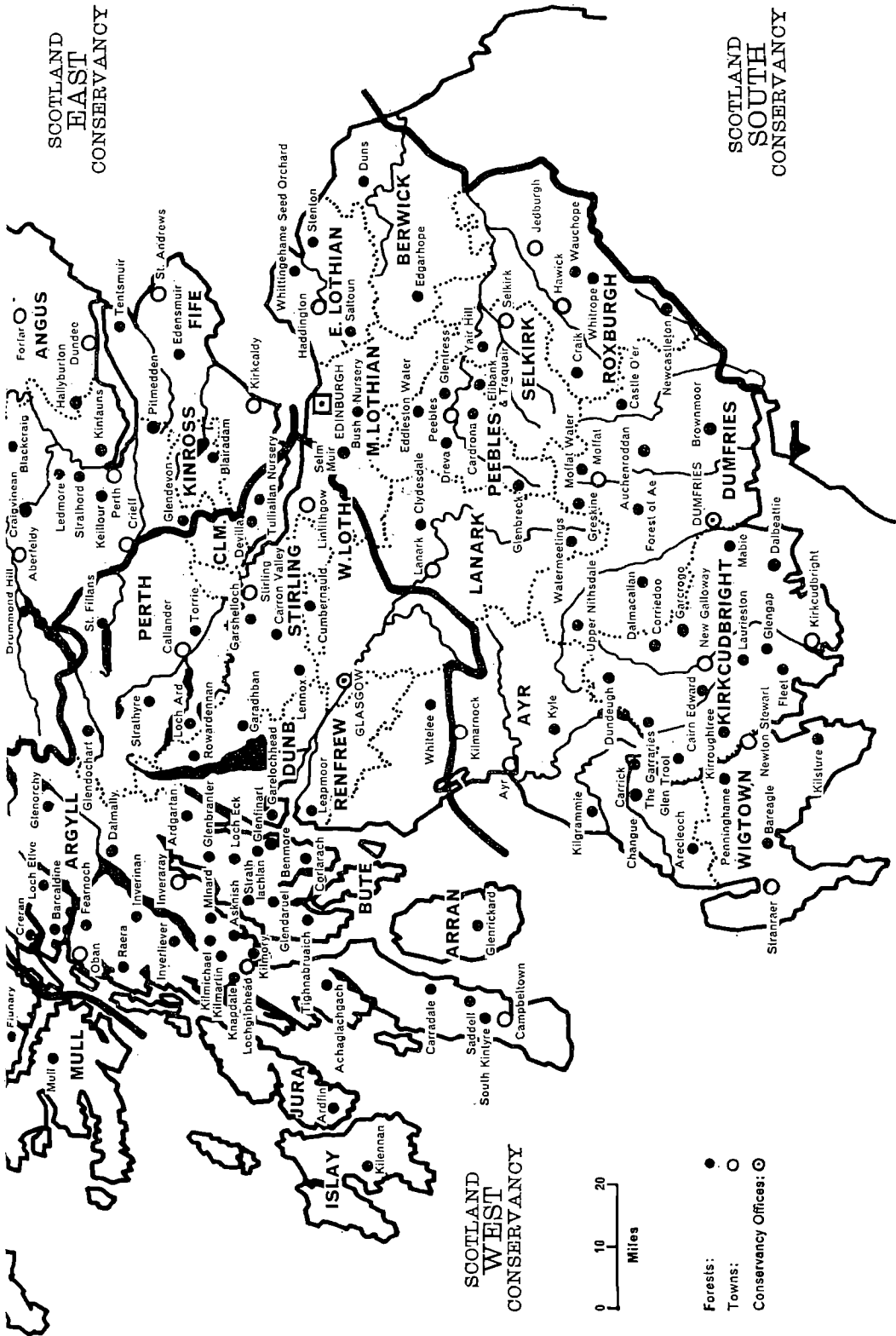
**ENGLAND
SOUTH-WEST
CONSERVANCY**

- Forests: ●
- Towns: ○
- Conservancy or Deputy Surveyors' Offices: ○

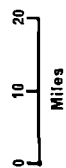


SCOTLAND
EAST
CONSERVANCY

SCOTLAND
SOUTH
CONSERVANCY



SCOTLAND
WEST
CONSERVANCY



- Forests: ●
- Towns: ○
- Conservancy Offices: ⊙

ADDRESSES OF THE MAIN OFFICES OF THE FORESTRY COMMISSION

Headquarters of the Forestry Commission:

25, Savile Row, London, W.1. (*Regent* 0221)

Senior Officer for Scotland:

25, Drumsheugh Gardens, Edinburgh, 3. (*Edinburgh Caledonian* 4782)

Senior Officer for Wales:

Churchill House, Churchill Way, Cardiff. (*Cardiff* 40661)

Director of Research:

Alice Holt Lodge, Wrecclesham, Farnham, Surrey. (*Bentley, Hampshire,*
2255)

Conservancy Offices

England:

North-West: Upton Grange, Upton Heath, Chester. (*Chester* 24006)

North-East: Briar House, Fulford Road, York. (*York* 24684)

East: Brooklands Avenue, Cambridge. (*Cambridge* 54495)

South-East: Danesfield, Grange Road, Woking. (*Woking* 61071)

South-West: Flowers Hill, Brislington, Bristol, 4. (*Bristol* 78041)

New Forest: The Queen's House, Lyndhurst, Hants. (*Lyndhurst* 2801)

Dean Forest: Whitemead Park, Parkend, Lydney, Glos. (*Whitecroft* 305)

Scotland:

North: 60, Church Street, Inverness. (*Inverness* 32811)

East: 6, Queen's Gate, Aberdeen. (*Aberdeen* 33361)

South: Greystone Park, Moffat Road, Dumfries. (*Dumfries* 2425)

West: 20, Renfrew Street, Glasgow, C.2. (*Glasgow Douglas* 7261)

Wales:

North: Victoria House, Victoria Terrace, Aberystwyth. (*Aberystwyth* 2367)

South: Churchill House, Churchill Way, Cardiff (*Cardiff* 40661)

Education and Training Branch

Chief Education and Training Officer:

25, Savile Row, London, W.1. (*Regent* 0221)

