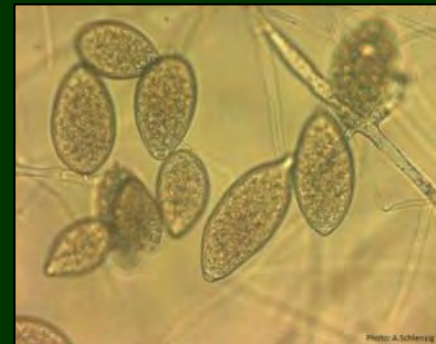
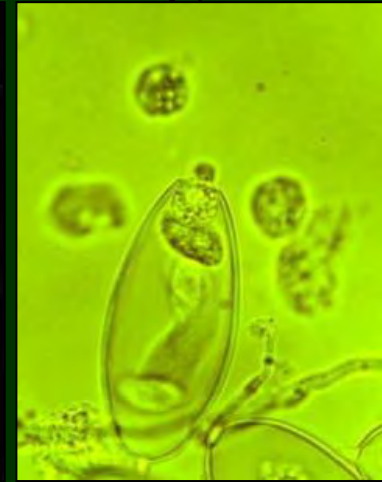


SAVING OUR TREES !



A few *Phytophthora* facts

- *Phytophthora* means 'plant destroyer'
- Oomycetes - 'water molds' spread via free swimming zoospores
- Carried in water and soil - can persist in soil
- Mainly infect plants through roots but some species also infect stems and foliage
- ~ 160 species described worldwide on broad range of hosts
- ~ 50 species currently known to occur in UK
- 5 new species pathogenic to trees 'emerged' in UK over last ten years



Phytophthoras changing our landscapes



P. ramorum



P. austrocedri



P. lateralis



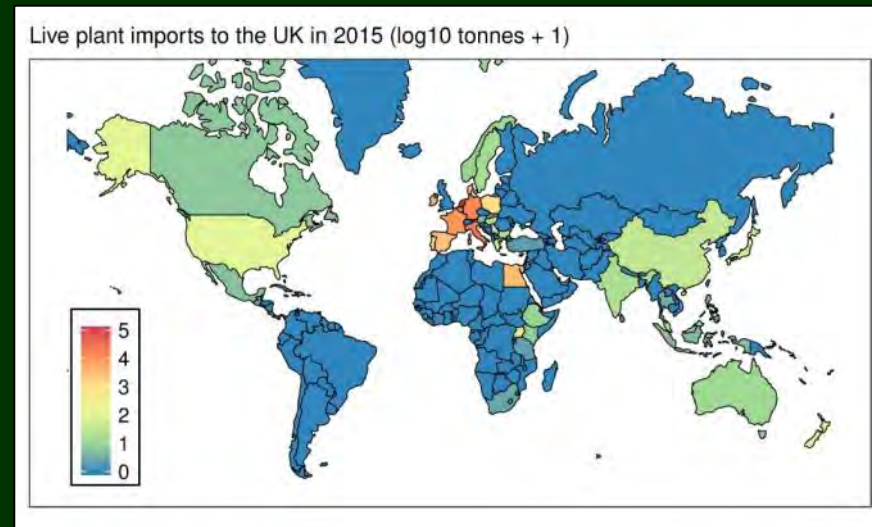
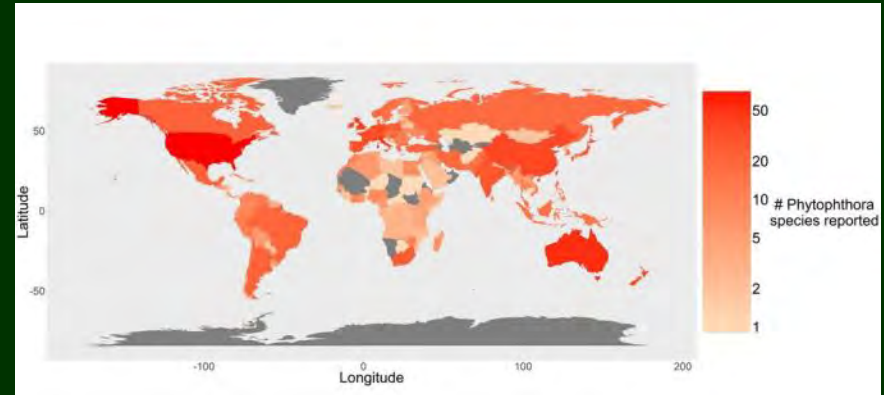
P. kernoviae



P. pseudosyringae

How are Phytophthoras getting here ?

- Over 120 known species not recorded as present in the UK
- Trade pathways enable Phytophthoras to be moved globally.....
- Finding new hosts
- Causing disease epidemics
- Let's keep the next one out !



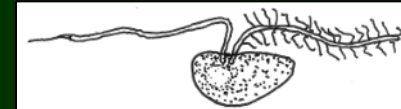
How do Phytophthoras affect you as a grower ?

- Disease outbreak at your nursery - loss of stock and income
- Pass on *Phytophthora* disease to your customer - lose your reputation as a quality supplier
- Pass on *Phytophthora* disease to the wider environment



How do Phytophthoras prosper in nurseries ?

- Unknowingly bringing in infected plants from supplier
- Zoospores transported in contaminated water supply
- Zoospores in puddles and run-off
- Infected leafy debris - release sporangia for aerial transmission
- Plant roots in direct contact with soil/mud



How do Phytophthoras prosper in nurseries ?

- Spores sticking to dirty pots, trays and trolleys
- Spores surviving in infected potting mix
- Spores sticking to dirty wheels, boots and tools
- Plant dump - great source of Phytophthoras !



How can YOU as a grower make a difference ?

- KNOW where your plants are coming from
- Use a CLEAN water supply
- PREVENT standing water
- RAISE containers off ground or place on free-draining gravel
- Use CLEAN containers and trays



How can YOU as a grower make a difference ?

- PREVENT leafy debris from accumulating on ground
- Ensure potting mix ingredients are *PHYTOPHTHORA*-FREE and do not re-use
- CLEAN equipment, tools and boots
- SANITARY disposal of sick plants
- Regularly INSPECT plants for disease symptoms



The PHYTO-THREATS project

Working with industry to reduce *Phytophthora* risk

- Sampling partner nurseries to identify *Phytophthora* risks
- Identifying global *Phytophthora* threats
- Assessing the feasibility of a UK-wide accreditation scheme
- <http://www.forestry.gov.uk/fr/phytothreats>



Come and visit us and find out more !

STAND 155

