



Shoot wilting and leaf necrosis.



Shoot wilting and leaf necrosis.



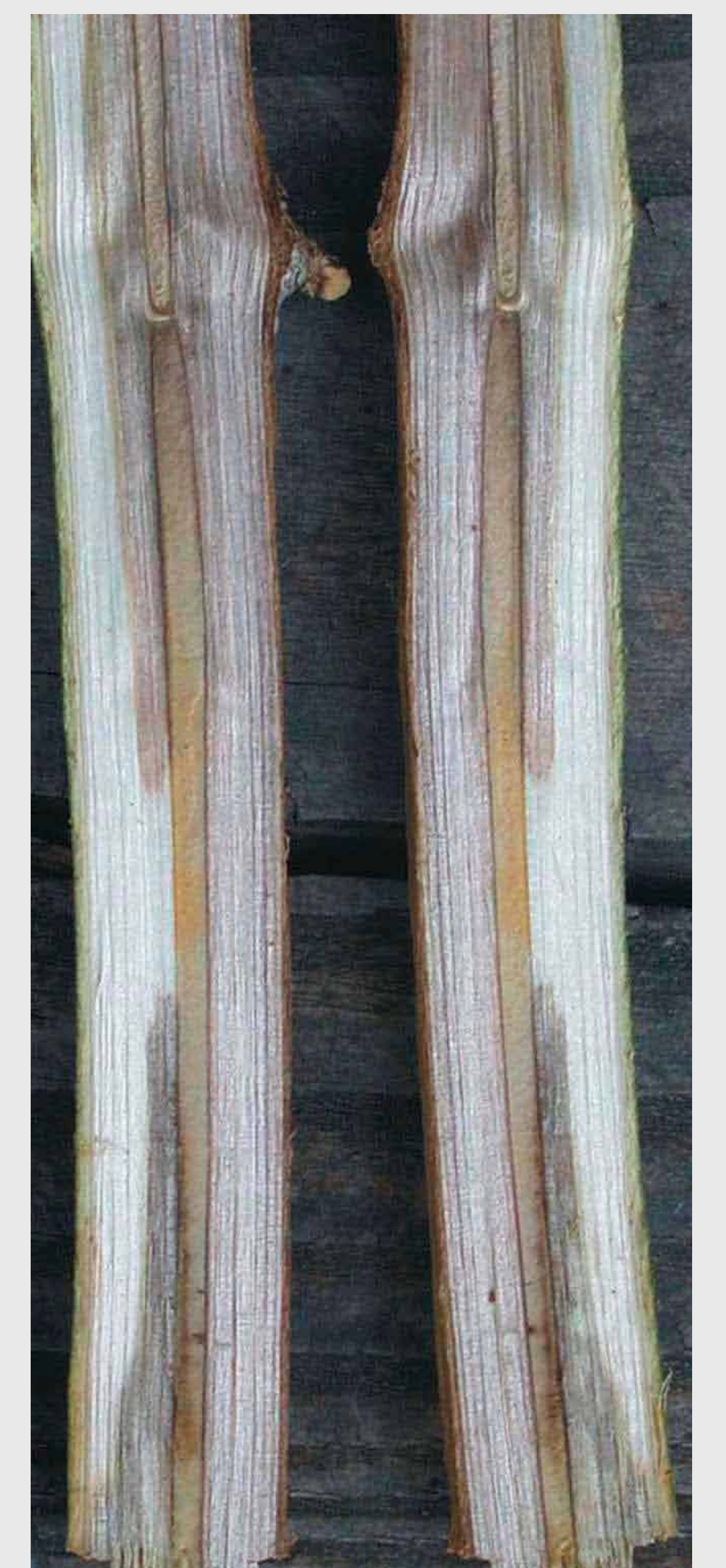
Stem lesions on affected stems and branches.



Stem lesions on affected stems and branches.



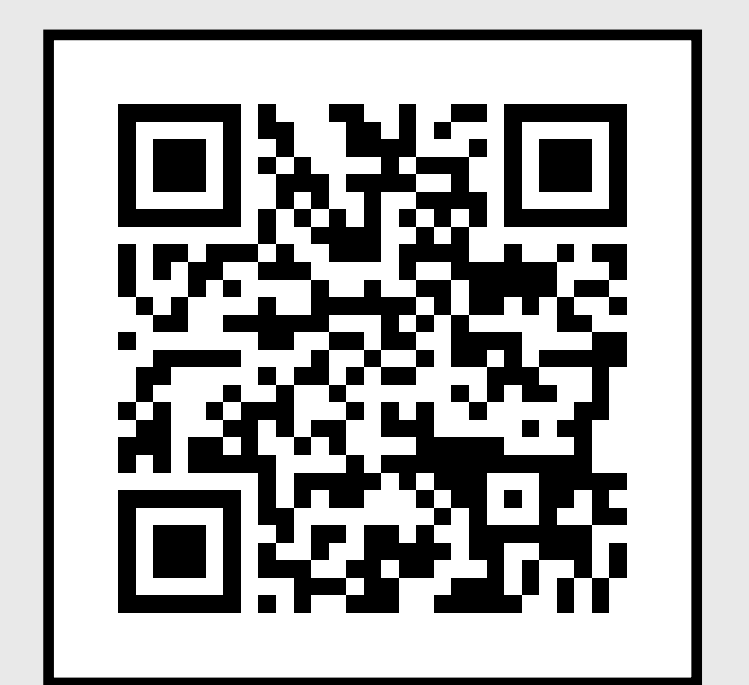
Extensive dieback and withered foliage on affected ash trees.



Wood discolouration associated with infection.

Tree Health Diagnostic and Advisory Service  
[www.forestry.gov.uk/fr/ddas](http://www.forestry.gov.uk/fr/ddas)

[www.forestry.gov.uk/fr/protectingtrees](http://www.forestry.gov.uk/fr/protectingtrees)



Web link to *Chalara fraxinea* information