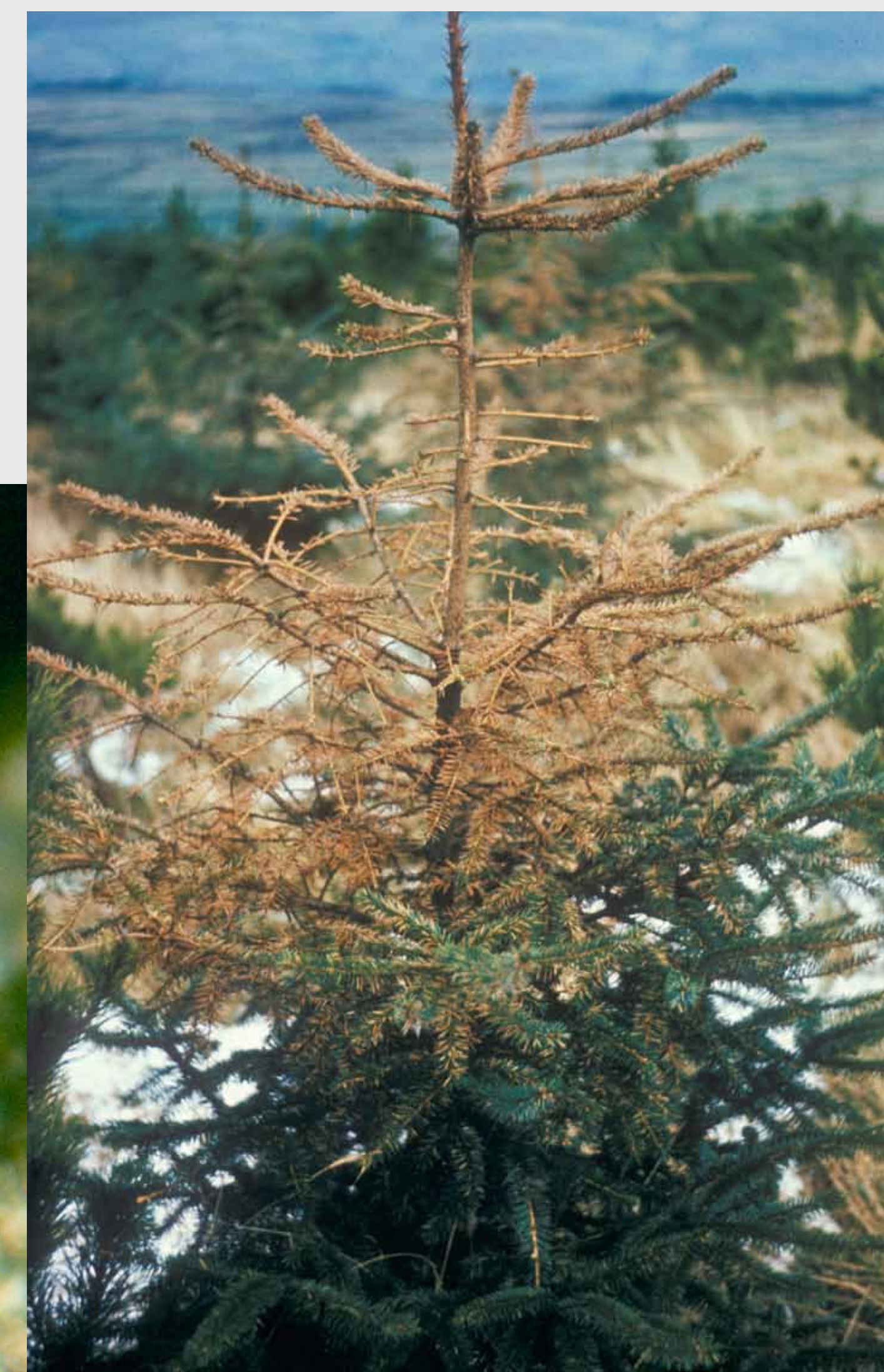




Individual needles of this Sitka spruce are yellow or show a yellow spot or band where the aphid has been feeding.



Sitka spruce defoliated by green spruce aphid.

The green spruce aphid (*Elatobium abietinum*) on a Sitka spruce needle.



Loss of old needles from Sitka spruce.



Damage caused by the green spruce aphid to Norway spruce needles.

Tree Health Diagnostic and Advisory Service
www.forestry.gov.uk/fr/ddas

www.forestry.gov.uk/fr/protectingtrees