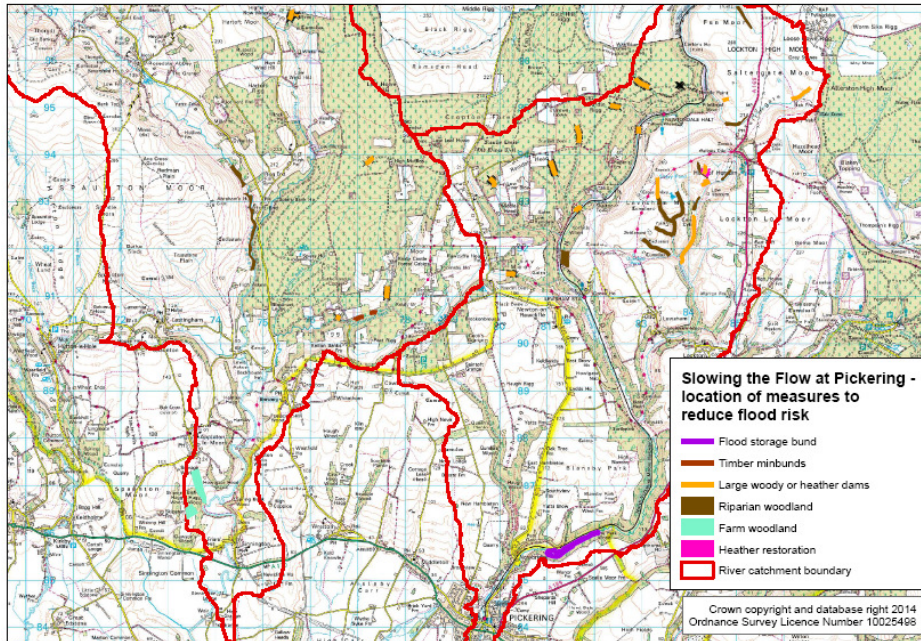


Appendix 14.2

Catchment Map and Photo Selection of Implemented Measures



Map of Pickering Beck and River Seven catchments showing the location of land management interventions



Main flood storage bund under construction in September 2014



New planting of farm woodland in 2011 on sensitive soils in River Seven catchment



New planting of riparian woodland by volunteers in the Hole of Horcum in the Pickering Beck catchment



Use of heather bale check dams within moorland drains



Large Woody Debris (LWD) dam secured by angled posts and wire on Pickering Beck



LWD dam using a cross log design on Sutherland Beck



LWD dam using stacked logs secured by posts, wire and bracing on Pickering Beck



Smaller LWD dam on forest drain



LWD dam during flood



Backing-up of water upstream of LWD dam during flood



Upstream timber bund on Sutherland Beck



Downstream timber bund on Sutherland Beck



Face of upstream timber bund



Use of wire to secure timber bund to long tree stumps



Timber bund during high flows



Downstream timber bund during November 2012 flood event (out-of-bank flow but water level only at first log in bund)