

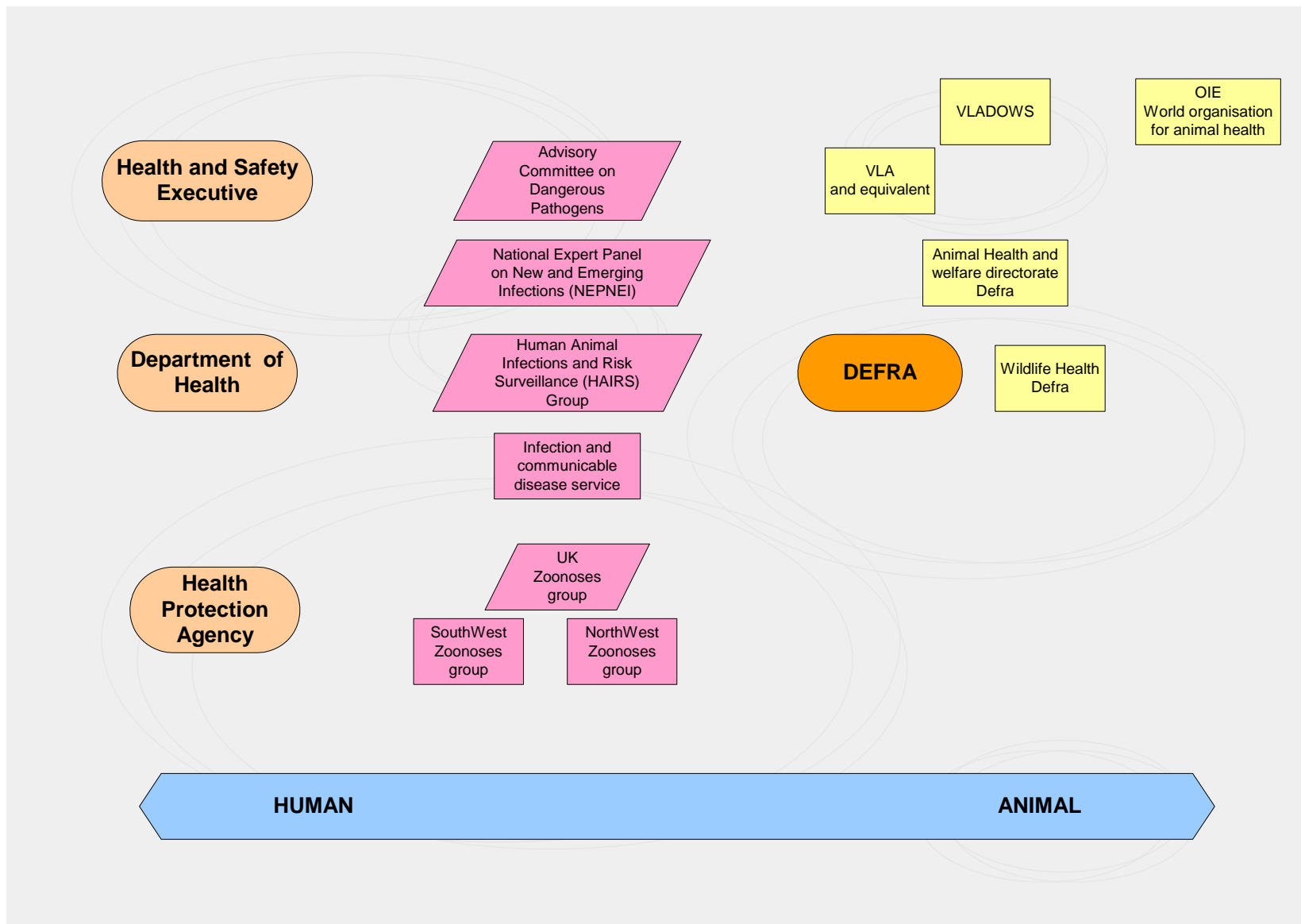
## Assessing and communicating animal disease risks for countryside users

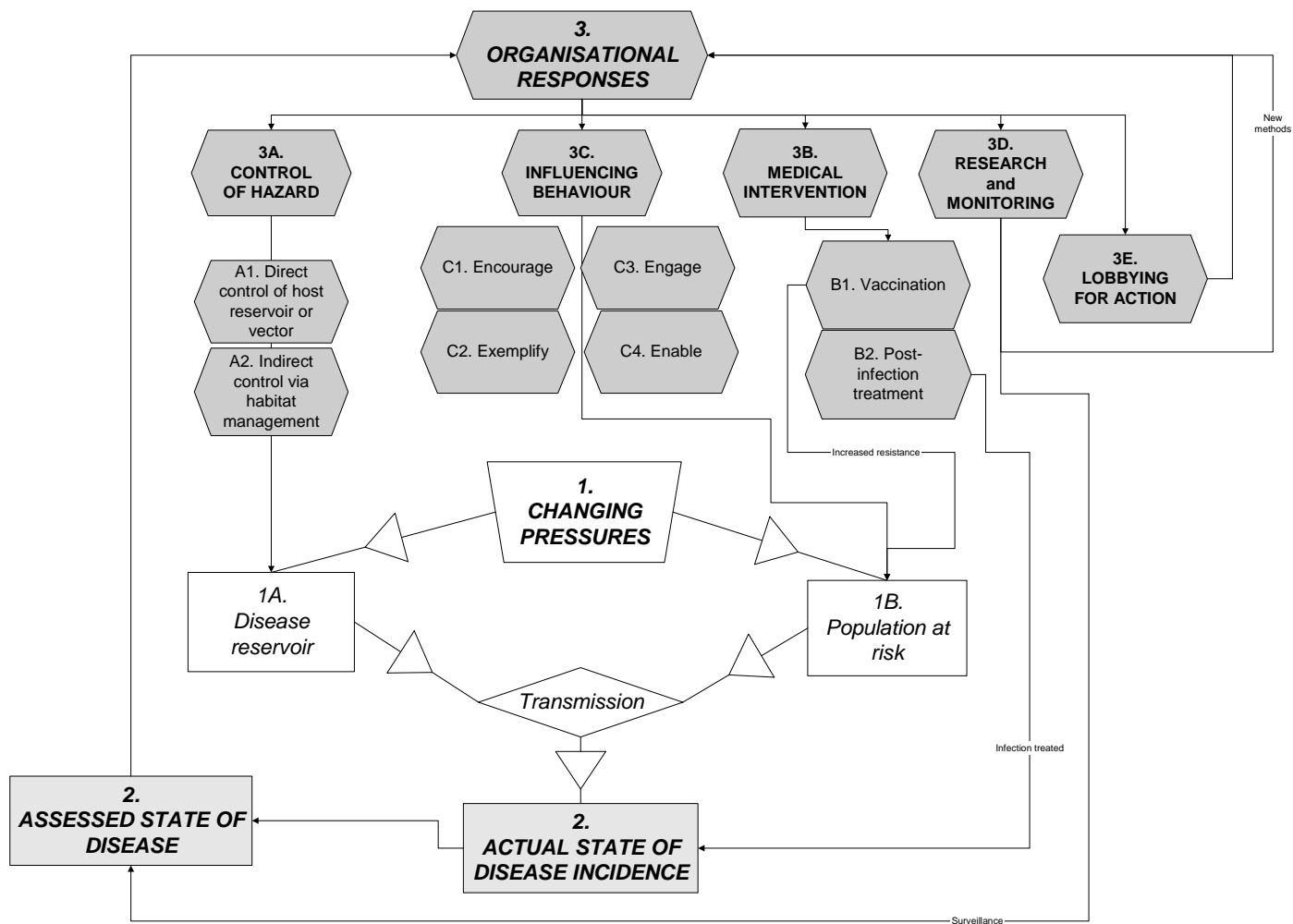


A RELU supported project being undertaken  
by  
Forest Research  
University of Surrey  
Brunel University  
University of Oxford

Chris Quine



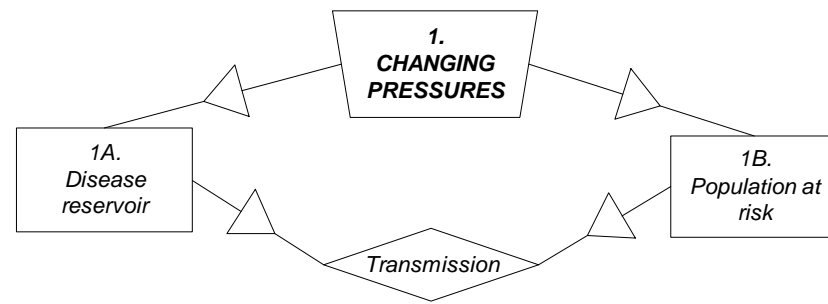


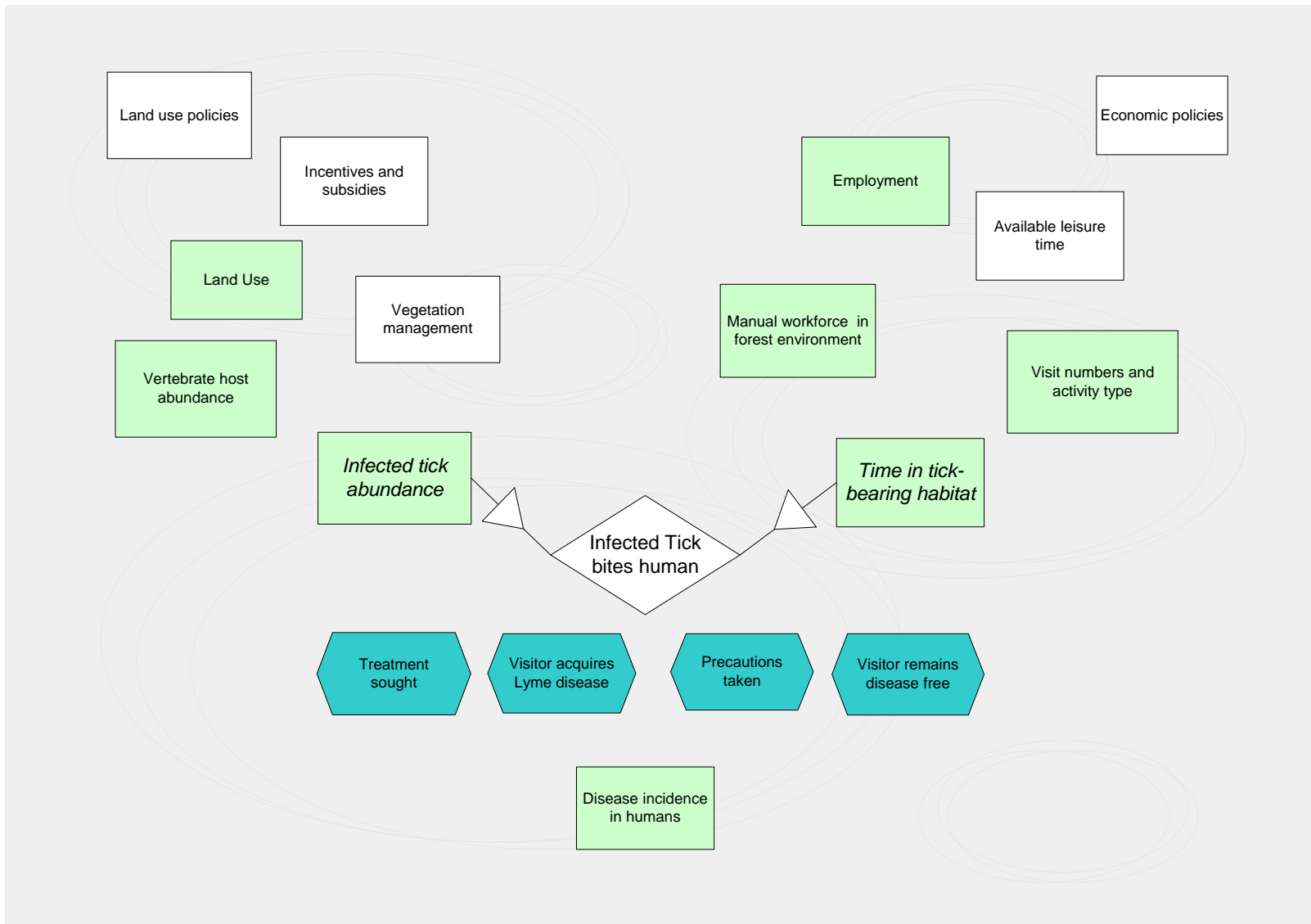


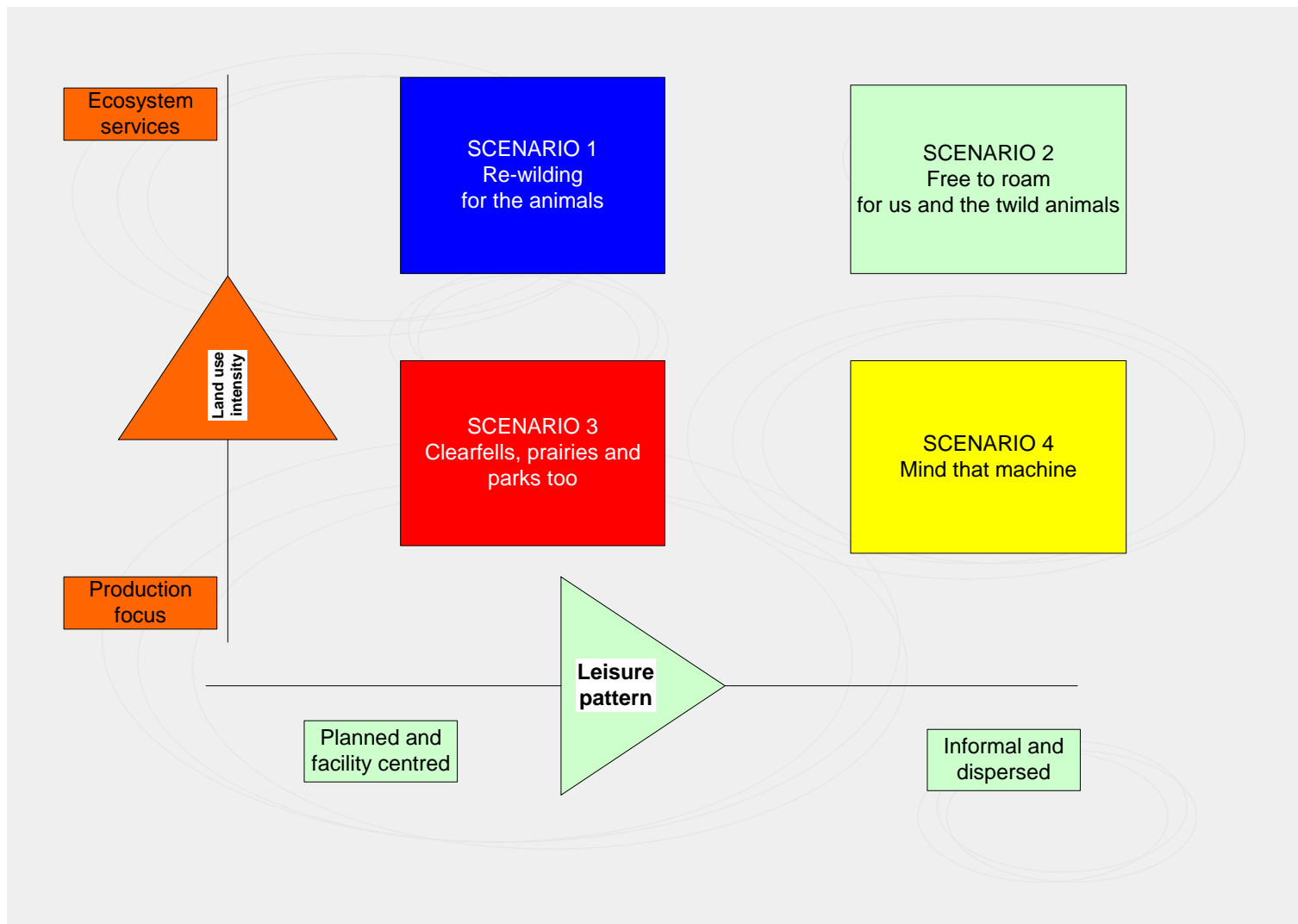
## Icebergs

**Alien they seemed to be:  
No mortal eye could see  
The intimate wedding of their later history  
Or sign that they were bent  
By paths coincident  
On being anon twin halves of one august event  
Till the Spinner of the Years said “Now”**

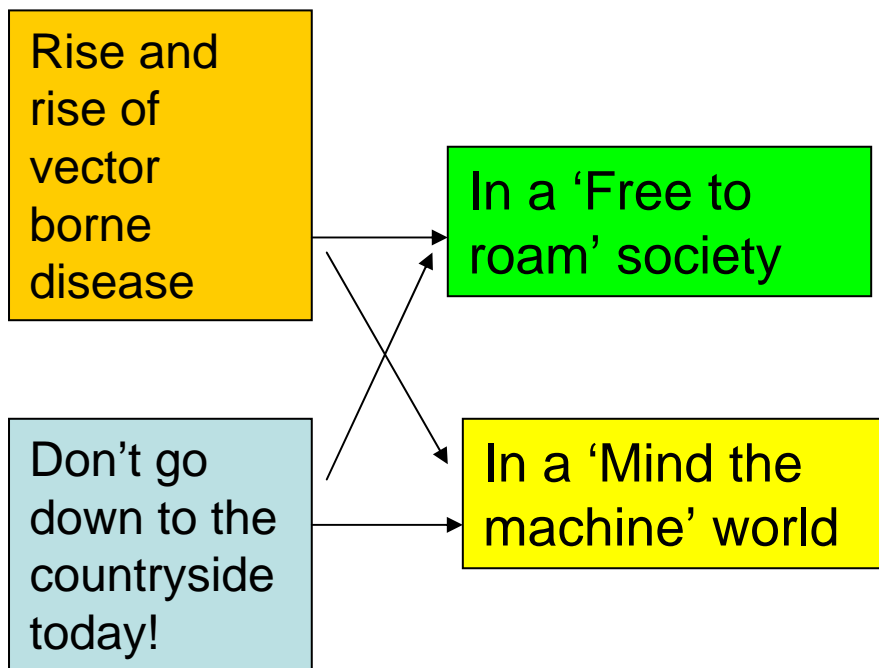
*Thomas Hardy, ‘The convergence of the Twain’?*







## Two additional aspects to scenarios



- What communication might be appropriate/is needed?
- How will communication differ for different countryside users?
- What methods of communication will be most appropriate and how should they be deployed?



## Scenario summary

Consistent threads across scenarios

Increasing visitor numbers, breadth of activities, range of knowledge

Variety of management options, information and communication important

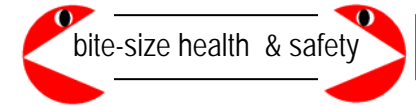
Local versus national responses

Role of land managers vs e.g. health authorities

Need for a framework for risk communication



## Contacts



National Trust, NTS, RSPB, Forestry Commission, the Royal Parks, private estates, National Parks, Wildlife Trusts, Centre Parcs, Visitor Safety in the Countryside Group

Natural England, CCW, SNH, Defra

Deer Initiative, British Association for Shooting and Conservation, Country Land and Business Association, Small Woods Association

Ramblers Association, International Mountain Biking Association, Mountaineering Council of Scotland, British Trust for Ornithology

Health Protection Agency, Health Protection Scotland

## Questions?

