

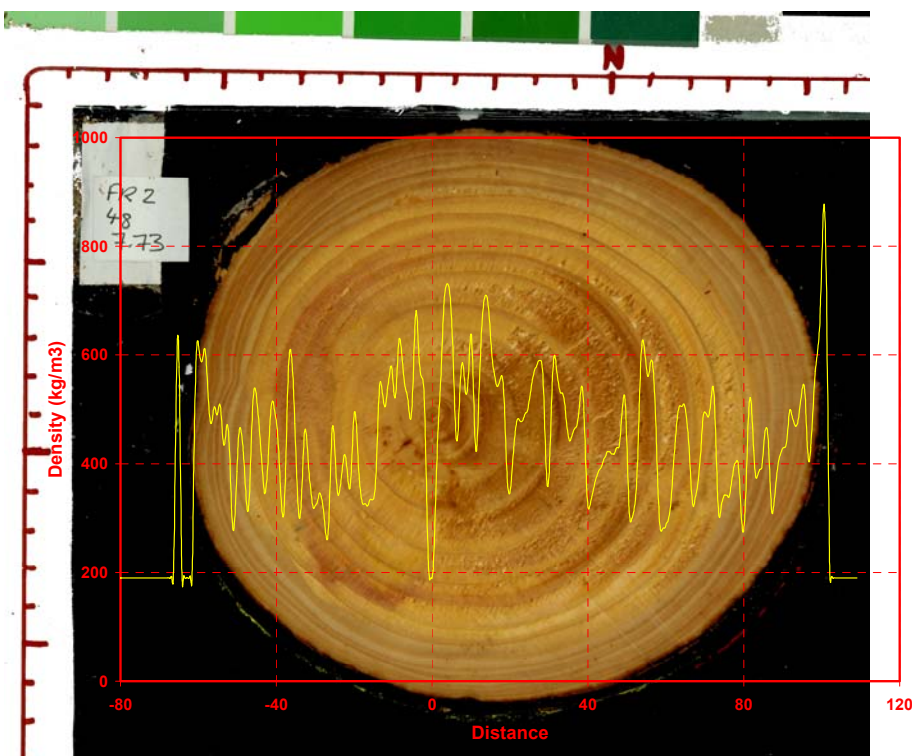
CT Scanning

CT scanning of Sitka spruce discs to assess wood density – Forest Research (Participant 1)



10–15 discs are scanned at the one pass using a CT scanner owned by the Scottish Agricultural College

The figure below illustrates the typical higher density values obtained for compression wood, compared to the density values for normal wood in the same growth ring.



Example of density measurements obtained using CT scanning