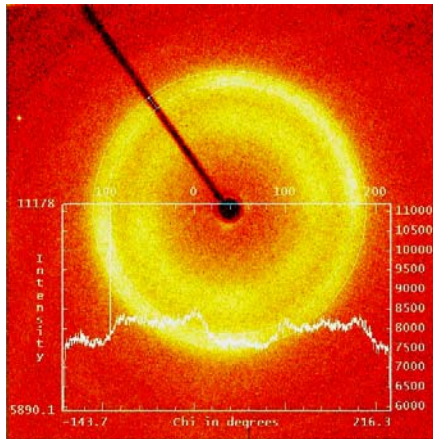
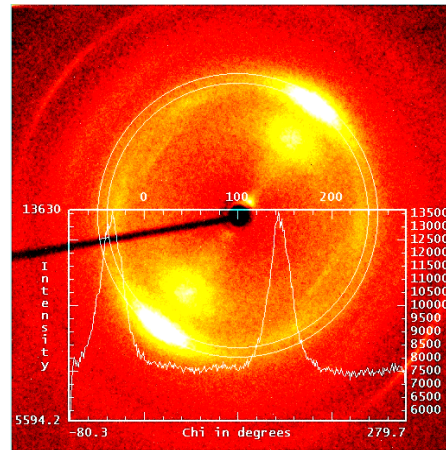


X-ray scattering – University of Florence

The possibility of identifying the different severity classes of Compression Wood by means of the X-ray scattering technique has been evaluated. According to references the cell shape may affect both the shape and intensity of peaks in the scattered signal. As illustrated below, initial results have shown that a clear separation between normal wood and severe compression wood is possible.



Compression wood



Normal wood

A paper on this work was presented to the II International Conference of European Society for Wood Mechanics held in Stockholm on May 2003.