

Benefits of

trees in Portsmouth

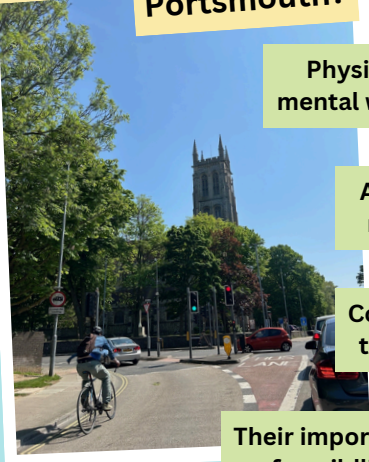
There is an estimated 8.9% of tree canopy cover in Portsmouth.

The city has a target of doubling this figure over the next 25 years.

Our trees improve local air quality, reduce the effects of flooding, provide habitat for wildlife, and create pleasant spaces for us to enjoy!

There are more than 100,000 trees in Portsmouth, providing over £1.7 million per year in benefits.

Why do local people value trees in Portsmouth?



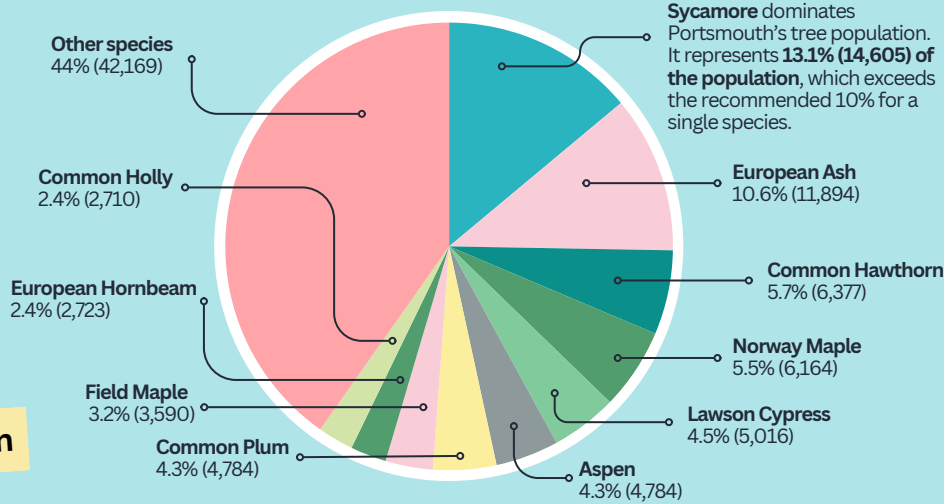
Physical and mental wellbeing

Aesthetic reasons

Connection to nature

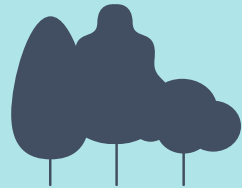
Their importance for wildlife

There are at least 65 different species in Portsmouth



Sycamore dominates Portsmouth's tree population. It represents 13.1% (14,605) of the population, which exceeds the recommended 10% for a single species.

Challenges & Recommendations



Portsmouth's tree population needs to diversify in species to increase its resilience to climate change and pests and diseases.

Residential is the largest land use in Portsmouth. Local people say they would be willing to consider planting a tree. Working with residents can help encourage new tree planting.

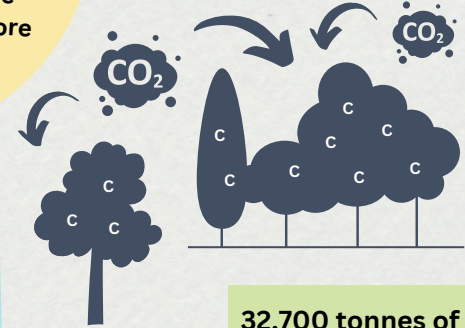


The proportion of large sized trees in Portsmouth is small. Aiming to retain large, mature trees will allow them to deliver greater levels of benefit.

Did you know?

Goat Willow is one of the best species for wildlife, supporting a total of 450 species of insect! This species only represents 1.1% of Portsmouth's tree population, so planting more could help increase the abundance of insects.

1,440 tonnes per year carbon sequestration (£1.4 million per year)



32,700 tonnes of carbon storage (£30.7 million)

20 tonnes per year of pollution removal (£166,000 per year)



35,000 m³ per year of avoided rain water run off (£86,000 per year)



£4.5 billion: The replacement cost for all of Portsmouth's trees